

4

3

2

1


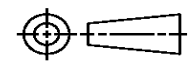
THIS DRAWING IS UNPUBLISHED. RELEASED FOR PUBLICATION
© COPYRIGHT ALL RIGHTS RESERVED.

LOC		DIST		REVISIONS			
P	LTR	DESCRIPTION		DATE	DWN	APVD	
	B1	ECR-16-009820		18JUL2016	GK	SD	

REPLACED BY OCEAN STYLE APPLICATOR PART NUMBER 2151180-1

FOR REPLACEMENT PARTS FOR APPLICATOR 1528922
REFER TO ADDITIONAL PAGE(S). SPARE PARTS KIT (IF LISTED)
WILL REMAIN AVAILABLE.

THE REPLACEMENT OCEAN STYLE APPLICATOR HAS THE
SAME TERMINATOR/PRESS INTERFACE AS APPLICATOR
1528922

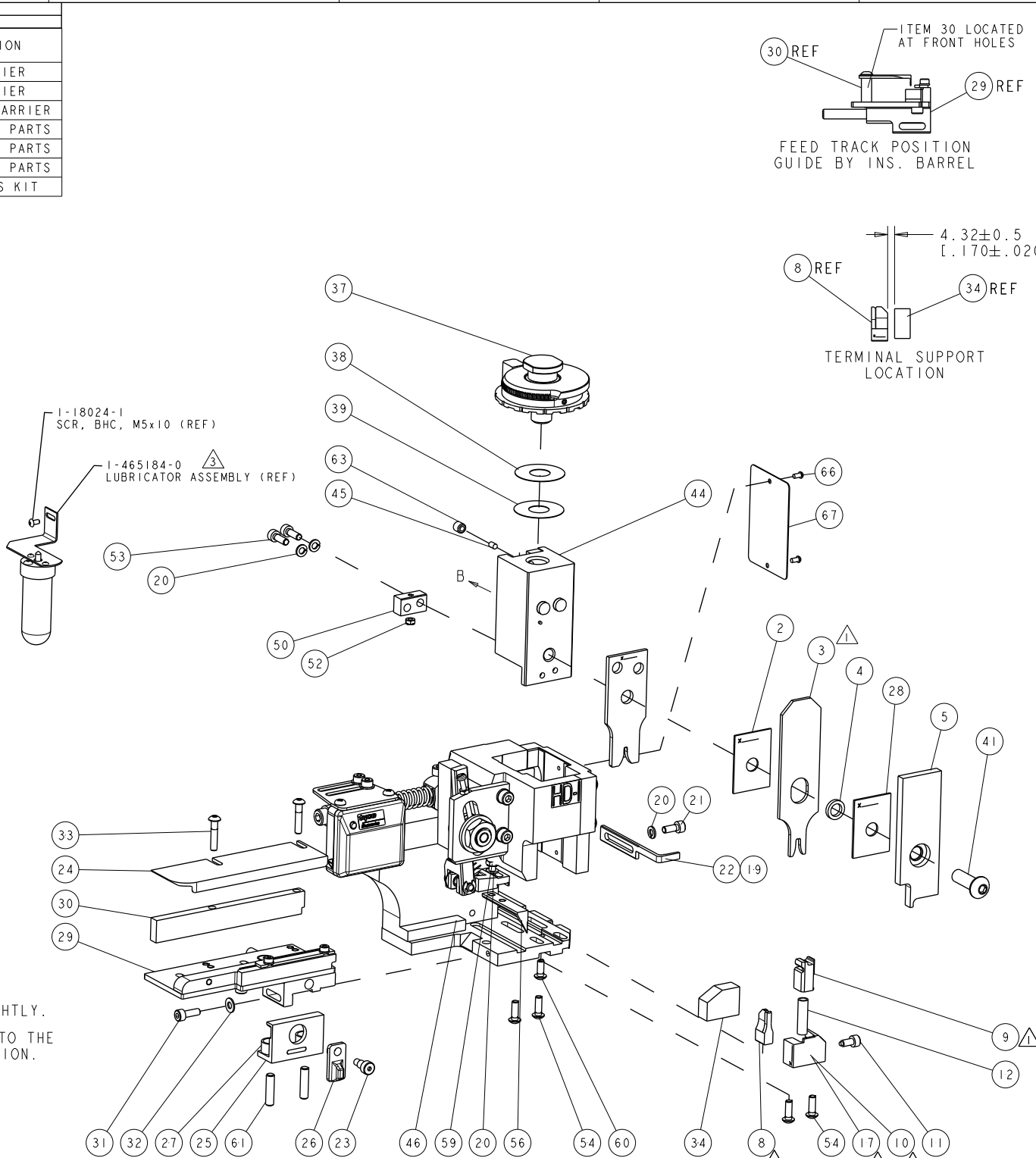
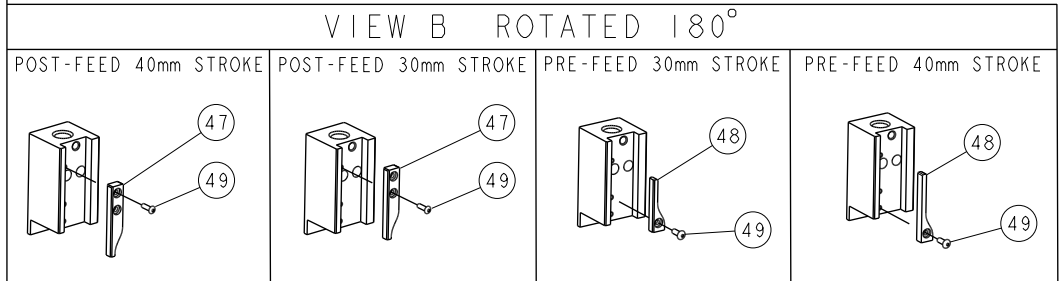
THIS DRAWING IS A CONTROLLED DOCUMENT.		DWN	GOPALAKRISHNA HV			TE Connectivity			
DIMENSIONS:		CHK	GOPALAKRISHNA HV			NAME			
		TOLERANCES UNLESS OTHERWISE SPECIFIED:		FINE ADJUST SIDE FEED HDI APPLICATOR					
		0 PLC	±	APVD	STOUGH DALE		PRODUCT SPEC		
MATERIAL		1 PLC	±	APPLICATION SPEC		SIZE	CAGE CODE	DRAWING NO	RESTRICTED TO
FINISH		2 PLC	±	WEIGHT		A3		©- 1528922	
		3 PLC	±	CUSTOMER DRAWING		SCALE	SHEET 1 OF 2	REV B1	
		4 PLC	±						
		ANGLES	±						

PART NUMBER	REV	TERMINATOR	FEED TYPE	DESCRIPTION
1528922-1	B	LEADMAKER	MECH POST FEED	CUTS CARRIER
1528922-2	B	BENCH	MECH PRE FEED	CUTS CARRIER
1528922-6	B	LEADMAKER	MECH POST FEED	CONTINUOUS CARRIER
7-1528922-1	B	LEADMAKER	MECH POST FEED	-1 AND SPARE PARTS
7-1528922-2	B	BENCH	MECH PRE FEED	-2 AND SPARE PARTS
7-1528922-6	B	LEADMAKER	MECH POST FEED	-6 AND SPARE PARTS
7-1528922-7	B	-	-	SPARE PARTS KIT

CRIMP DATA		TE TERMINAL		TE CRIMP SPECS	
TERMINAL NAME: STANDARD POWER TIMER CONTACT					
CRIMP	SIZE	TYPE	RANGE		
WIRE	2.03 [.080 IN]	F	0.50 - 1.00mm ²		
INSUL	3.30 [.130 IN]	F	2.00 - 2.70 [.079 - .106 IN]		
WIRE STRIP LENGTH 3.40 - 4.00 [.134 - .157 IN]		APPL INSTRUCTIONS 408-8322 & 408-8490			
TERMINAL 114-18037		FEED 16.00 [.630 IN]			
TERMINALS APPLIED					
927827	-	-	-	-	-
1241834	-	-	-	-	-
-	-	-	-	-	-
-	-	-	-	-	-
-	-	-	-	-	-
WIRE SIZE	CRIMP HEIGHT	REF SETTING			
1.00mm ²	1.56 ± 0.05 [.061 ± .002 IN]	B 5			
0.85mm ²	1.51 ± 0.05 [.059 ± .002 IN]	C 0			
0.75mm ²	1.47 ± 0.05 [.058 ± .002 IN]	C 3			
20 AWG	1.39 ± 0.05 [.055 ± .002 IN]	C 7			
0.50mm ²	1.38 ± 0.05 [.054 ± .002 IN]	C 8			

- 1. RECOMMENDED SPARE PARTS.
- 2. GREASE RAM, CAM, CAM FOLLOWER AND FEED ROD LIGHTLY.
- 3. CERTAIN TERMINALS REQUIRE LUBRICATION. REFER TO THE APPLICATOR INSTRUCTION SHEET FOR MORE INFORMATION.
- 4. LUBRICATE DAILY PER THE APPLICATOR INSTRUCTION SHEET SUPPLIED WITH THE APPLICATOR.

*** WARNING**
ON INSTALLATION, SET WIRE DISC TO LARGEST WIRE SIZE SETTING. USE OF SETTINGS BELOW MIN. REQUIRED CRIMP HEIGHT SETTING WILL CAUSE DAMAGE TO CRIMP TOOLING.



77	76	72	71	6	2	1	PART NO	DESCRIPTION	ITEM NO
-	-	-	-	-	-	-	-	-	84
-	-	-	-	-	-	-	-	-	83
-	-	-	-	-	-	-	-	-	82
-	-	-	-	-	-	-	-	-	81
-	-	-	-	-	-	-	-	-	80
-	-	-	-	-	-	-	-	-	79
-	-	-	-	-	-	-	-	-	78
-	-	-	-	-	-	-	-	-	77
-	-	-	-	-	-	-	-	-	76
-	-	-	-	-	-	-	-	-	75
-	-	-	-	-	-	-	-	-	74

SET UP GAGE 458637-3

REV	DESCRIPTION	DATE	OWN	APVD
A	SEE ECO-08-024403	01OCT2008	LJL	MC
B	ECR-16-000722	27JAN2016	RS	UG

REV	DESCRIPTION	DATE	OWN	APVD	
-	-	-	-	-	73
-	-	-	-	-	72
-	-	-	-	-	71
-	-	-	-	-	70
-	-	-	-	-	69
-	-	-	-	-	68
-	-	-	-	-	67
-	-	-	-	-	66
-	-	-	-	-	65
-	-	-	-	-	64
-	-	-	-	-	63
-	-	-	-	-	62
-	-	-	-	-	61
-	-	-	-	-	60
-	-	-	-	-	59
-	-	-	-	-	58
-	-	-	-	-	57
-	-	-	-	-	56
-	-	-	-	-	55
-	-	-	-	-	54
-	-	-	-	-	53
-	-	-	-	-	52
-	-	-	-	-	51
-	-	-	-	-	50
-	-	-	-	-	49
-	-	-	-	-	48
-	-	-	-	-	47
-	-	-	-	-	46
-	-	-	-	-	45
-	-	-	-	-	44
-	-	-	-	-	43
-	-	-	-	-	42
-	-	-	-	-	41
-	-	-	-	-	40
-	-	-	-	-	39
-	-	-	-	-	38
-	-	-	-	-	37
-	-	-	-	-	36
-	-	-	-	-	35
-	-	-	-	-	34
-	-	-	-	-	33
-	-	-	-	-	32
-	-	-	-	-	31
-	-	-	-	-	30
-	-	-	-	-	29
-	-	-	-	-	28
-	-	-	-	-	27
-	-	-	-	-	26
-	-	-	-	-	25
-	-	-	-	-	24
-	-	-	-	-	23
-	-	-	-	-	22
-	-	-	-	-	21
-	-	-	-	-	20
-	-	-	-	-	19
-	-	-	-	-	18
-	-	-	-	-	17
-	-	-	-	-	16
-	-	-	-	-	15
-	-	-	-	-	14
-	-	-	-	-	13
-	-	-	-	-	12
-	-	-	-	-	11
-	-	-	-	-	10
-	-	-	-	-	9
-	-	-	-	-	8
-	-	-	-	-	7
-	-	-	-	-	6
-	-	-	-	-	5
-	-	-	-	-	4
-	-	-	-	-	3
-	-	-	-	-	2
-	-	-	-	-	1

APPROVED FOR RELEASE BY THE NATIONAL ARCHIVES

DATE: 31 JUL 2008

NAME: M. CLIFFORD

TE Connectivity

FINE ADJUST SIDE FEED HD1 APPLICATOR

SIZE: A1 | CAGE CODE: 00779 | DRAWING NO: C-1528922 | RESTRICTED TO: -

SCALE: 3:5 | SHEET: 1 OF 1 | REV: B