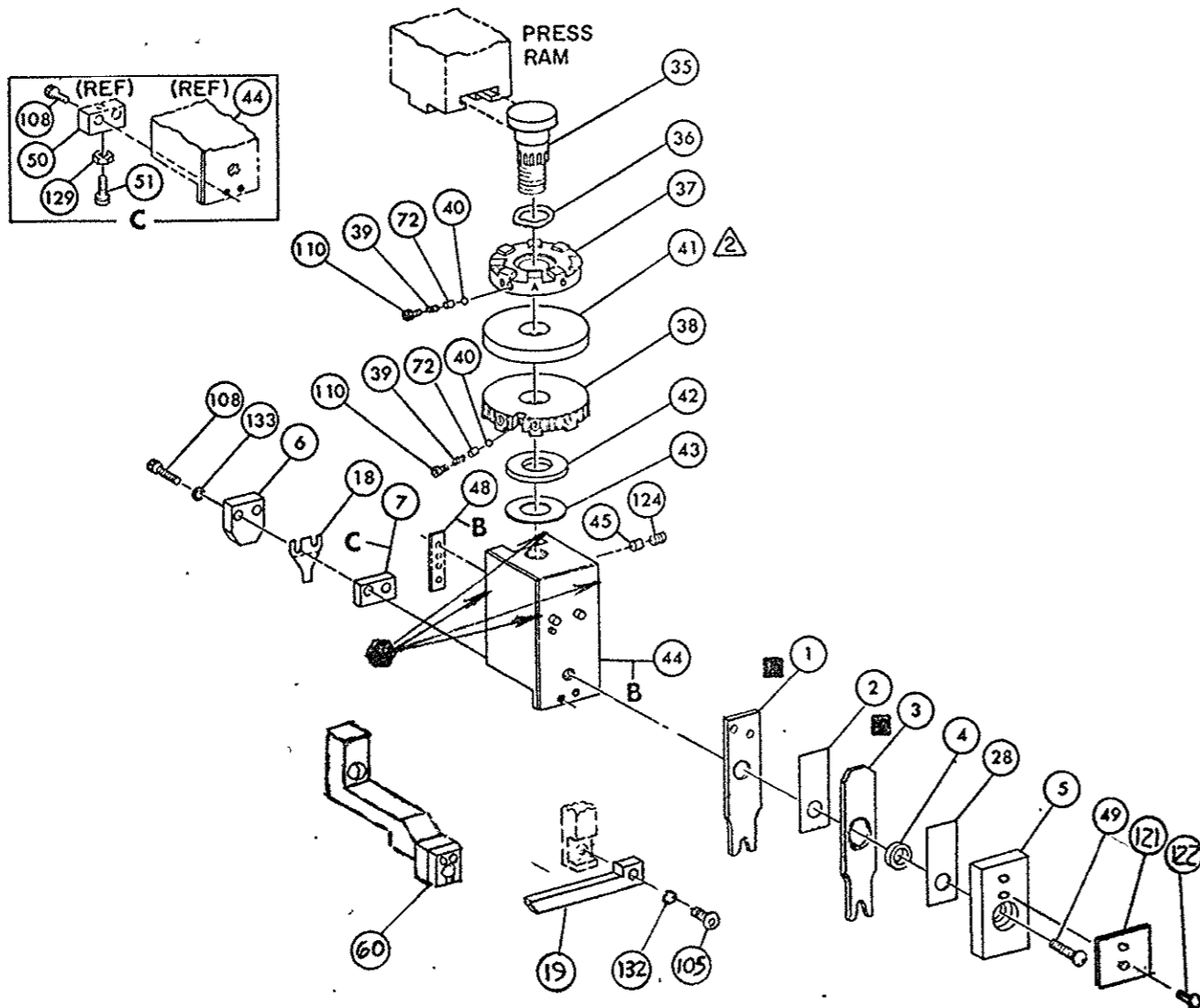
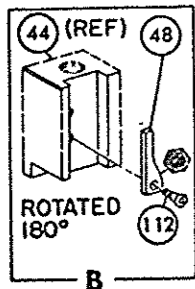


THIS DRAWING IS A CONTROLLED DOCUMENT.

466906-1

SPECIAL PRE-FEED
5/8" STROKE



NOTES:

1- ONLY THE ITEMS WITH QUANTITIES SPECIFIED ON PARTS LIST ARE USED ON THIS APPLICATOR.

△ USED IN PLACE OF ITEM 38 WHEN INSULATION CRIMP IS NOT USED.

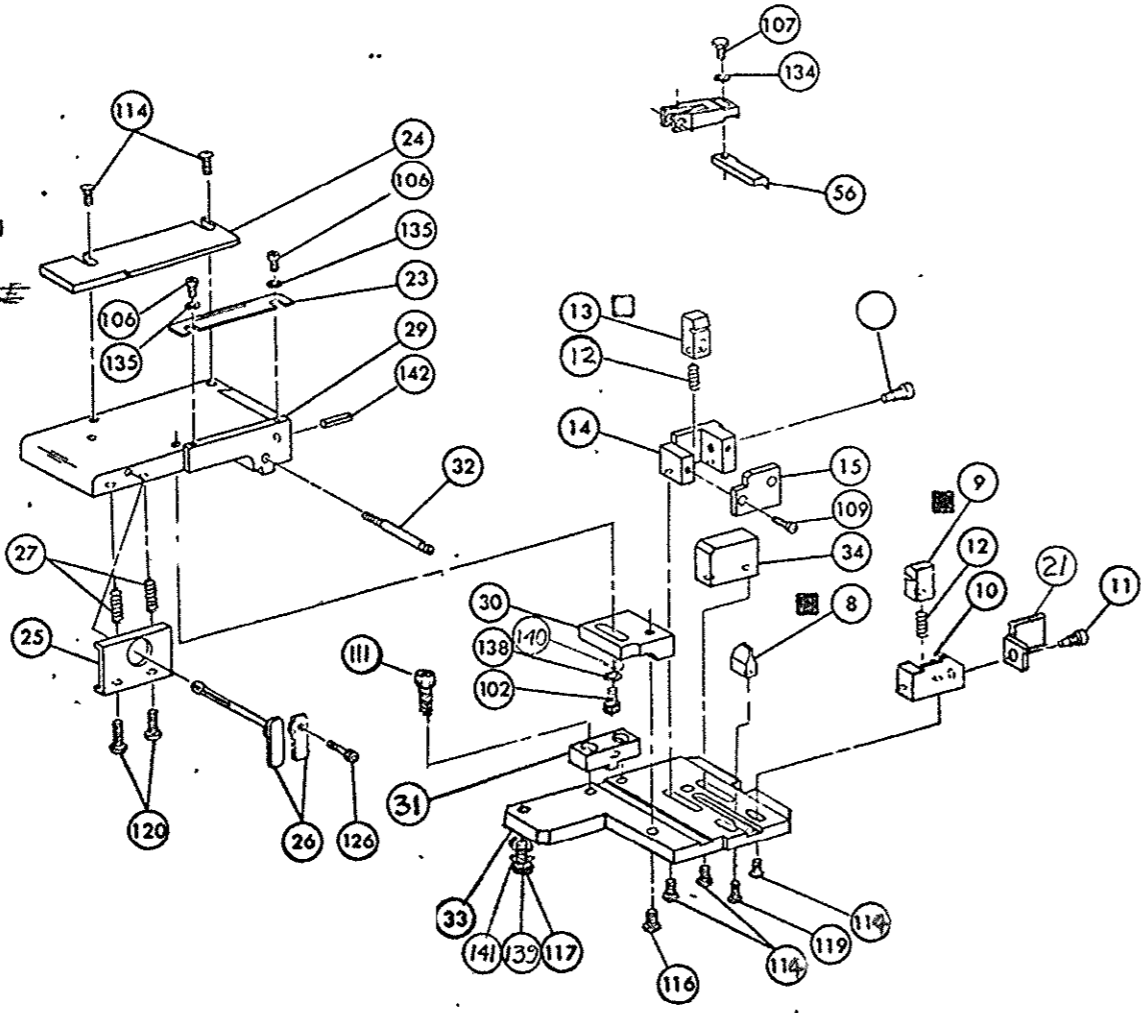
3- FEED PIVOT CENTER HOLE

△- SEE REMARKS

KEY:

■ RECOMMENDED SPARE PARTS

● GREASE WEEKLY



QTY	PART NO	DESCRIPTION	ITEM NO
1	4-21028-0	PIN, SLOT SPR (.093 DIA X .75) STR G PLATE	142
1	21899-2	WASHER, FLAT (NO 10) MOUNTING	141
1	21899-2	WASHER, FLAT (NO 10) S G ADJ BLOCK	140
1	21024-5	WASHER, LOCK (NO 10) MOUNTING	139
1	21024-5	WASHER, LOCK (NO 10) STRIP GUIDE ADJ BLOCK	138
2	21024-2	WASHER, LOCK (NO 4) FRONT STRIP GUIDE	137
REF	21024-4	WASHER, LOCK (NO 8) FEED FINGER	136
2	21024-4	WASHER, LOCK (NO 8) DEPRESSOR	135
REF	21024-4	WASHER, LOCK (NO 6) STRIPPER	134
1	21018-5	NUT, HEX MACH (6-32) HOLDDOWN	133
1	21009-2	SCR, SHLD. (.187 DIA X .250 LG) DRAG LEVER	132
1	21009-2	SCR, SKT SET (1/4-20 X .25) (LOC-WEL) RAM	127
2	21017-2	SCR, DRIVE (#2 X .188 LG)	126
1	219347-1	PLATE, I.D.	125
2	3-21002-0	SCR, BUT HD SKT CAP (10-32 X .88) DRAG	124
1	22733-8	SCR, BUT HD SKT CAP (8-32 X .38) (LOC-WEL) ANVIL	123
1	3-21000-8	SCR, SOC HD SKT CAP (10-32 X .88) MOUNTING	122
1	2-21002-7	SCR, BUT HD SKT CAP (10-32 X .50) SG ADJ BLOCK	121
2	22733-0	SCR, BUT HD SKT CAP (8-32 X .50) SHEAR	120
6	2-21002-2	SCR, BUT HD SKT CAP (8-32 X .50) R STRIP GUIDE	119
1	1-21002-7	SCR, BUT HD SKT CAP (6-32 X .50) CAM	118
2	2-21000-7	SCR, SKT HD CAP (6-32 X .50) SCR. BLOCK	117
23030-1	23030-1	SCR, SKT HD CAP (6-32 X .25) (LOC-WEL) CP DISC	116
2	2-21000-7	SCR, SKT HD CAP (6-32 X .25) REAR SHEAR PLATE	115
REF	2-21000-7	SCR, SKT HD CAP (8-32 X .50) DEPRESSOR (REAR)	114
2	2-21002-1	SCR, BUT HD MACH (8-32 X .38) FEED FINGER	113
2	1-21000-3	SCR, SKT HD CAP (4-40 X .25) F STRIP GUIDE	112
REF	2-21002-1	SCR, BUT HD CAP (8-32 X .38) STRIPPER	111
1	3-22603-1	SCR, HEX HD CAP (10-32 X .38) SG ADJ BLOCK	110
1	1-21000-7	SCR, BUT HD SKT CAP (6-32 X .50) CAM	109
2	2-21000-7	SCR, SKT HD CAP (6-32 X .50) SCR. BLOCK	108
2	2-21000-7	SCR, SKT HD CAP (6-32 X .25) (LOC-WEL) CP DISC	107
2	2-21000-7	SCR, SKT HD CAP (6-32 X .25) REAR SHEAR PLATE	106
REF	2-21002-1	SCR, BUT HD MACH (8-32 X .38) FEED FINGER	105
2	1-21000-3	SCR, SKT HD CAP (4-40 X .25) F STRIP GUIDE	104
REF	2-21002-1	SCR, BUT HD CAP (8-32 X .38) STRIPPER	103
1	3-22603-1	SCR, HEX HD CAP (10-32 X .38) SG ADJ BLOCK	102
1	1-21000-7	SCR, BUT HD SKT CAP (6-32 X .50) CAM	101
2	2-21000-7	SCR, SKT HD CAP (6-32 X .50) SCR. BLOCK	79
23030-1	23030-1	SCR, SKT HD CAP (6-32 X .25) (LOC-WEL) CP DISC	78
2	2-21000-7	SCR, SKT HD CAP (6-32 X .25) REAR SHEAR PLATE	77
REF	2-21000-7	SCR, SKT HD CAP (8-32 X .50) DEPRESSOR (REAR)	76
2	2-21002-1	SCR, BUT HD MACH (8-32 X .38) FEED FINGER	75
2	1-21000-3	SCR, SKT HD CAP (4-40 X .25) F STRIP GUIDE	74
REF	2-21002-1	SCR, BUT HD CAP (8-32 X .38) STRIPPER	73
1	3-22603-1	SCR, HEX HD CAP (10-32 X .38) SG ADJ BLOCK	72
1	1-21000-7	SCR, BUT HD SKT CAP (6-32 X .50) CAM	71
2	2-21000-7	SCR, SKT HD CAP (6-32 X .50) SCR. BLOCK	70
23030-1	23030-1	SCR, SKT HD CAP (6-32 X .25) (LOC-WEL) CP DISC	69
2	2-21000-7	SCR, SKT HD CAP (6-32 X .25) REAR SHEAR PLATE	68
REF	2-21000-7	SCR, SKT HD CAP (8-32 X .50) DEPRESSOR (REAR)	67
2	2-21002-1	SCR, BUT HD MACH (8-32 X .38) FEED FINGER	66
2	1-21000-3	SCR, SKT HD CAP (4-40 X .25) F STRIP GUIDE	65
REF	2-21002-1	SCR, BUT HD CAP (8-32 X .38) STRIPPER	64
1	3-22603-1	SCR, HEX HD CAP (10-32 X .38) SG ADJ BLOCK	63
1	1-21000-7	SCR, BUT HD SKT CAP (6-32 X .50) CAM	62
2	2-21000-7	SCR, SKT HD CAP (6-32 X .50) SCR. BLOCK	61
23030-1	23030-1	SCR, SKT HD CAP (6-32 X .25) (LOC-WEL) CP DISC	60
2	2-21000-7	SCR, SKT HD CAP (6-32 X .25) REAR SHEAR PLATE	59
REF	2-21000-7	SCR, SKT HD CAP (8-32 X .50) DEPRESSOR (REAR)	58
2	2-21002-1	SCR, BUT HD MACH (8-32 X .38) FEED FINGER	57
2	1-21000-3	SCR, SKT HD CAP (4-40 X .25) F STRIP GUIDE	56
REF	2-21002-1	SCR, BUT HD CAP (8-32 X .38) STRIPPER	55
1	3-22603-1	SCR, HEX HD CAP (10-32 X .38) SG ADJ BLOCK	54
1	1-21000-7	SCR, BUT HD SKT CAP (6-32 X .50) CAM	53
2	2-21000-7	SCR, SKT HD CAP (6-32 X .50) SCR. BLOCK	52
23030-1	23030-1	SCR, SKT HD CAP (6-32 X .25) (LOC-WEL) CP DISC	51
2	2-21000-7	SCR, SKT HD CAP (6-32 X .25) REAR SHEAR PLATE	50
REF	2-21000-7	SCR, SKT HD CAP (8-32 X .50) DEPRESSOR (REAR)	49
2	2-21002-1	SCR, BUT HD MACH (8-32 X .38) FEED FINGER	48
2	1-21000-3	SCR, SKT HD CAP (4-40 X .25) F STRIP GUIDE	47
REF	2-21002-1	SCR, BUT HD CAP (8-32 X .38) STRIPPER	46
1	3-22603-1	SCR, HEX HD CAP (10-32 X .38) SG ADJ BLOCK	45
1	1-21000-7	SCR, BUT HD SKT CAP (6-32 X .50) CAM	44
2	2-21000-7	SCR, SKT HD CAP (6-32 X .50) SCR. BLOCK	43
23030-1	23030-1	SCR, SKT HD CAP (6-32 X .25) (LOC-WEL) CP DISC	42
2	2-21000-7	SCR, SKT HD CAP (6-32 X .25) REAR SHEAR PLATE	41
REF	2-21000-7	SCR, SKT HD CAP (8-32 X .50) DEPRESSOR (REAR)	40
2	2-21002-1	SCR, BUT HD MACH (8-32 X .38) FEED FINGER	39
2	1-21000-3	SCR, SKT HD CAP (4-40 X .25) F STRIP GUIDE	38
REF	2-21002-1	SCR, BUT HD CAP (8-32 X .38) STRIPPER	37
1	3-22603-1	SCR, HEX HD CAP (10-32 X .38) SG ADJ BLOCK	36
1	1-21000-7	SCR, BUT HD SKT CAP (6-32 X .50) CAM	35
2	2-21000-7	SCR, SKT HD CAP (6-32 X .50) SCR. BLOCK	34
23030-1	23030-1	SCR, SKT HD CAP (6-32 X .25) (LOC-WEL) CP DISC	33
2	2-21000-7	SCR, SKT HD CAP (6-32 X .25) REAR SHEAR PLATE	32
REF	2-21000-7	SCR, SKT HD CAP (8-32 X .50) DEPRESSOR (REAR)	31
2	2-21002-1	SCR, BUT HD MACH (8-32 X .38) FEED FINGER	30
2	1-21000-3	SCR, SKT HD CAP (4-40 X .25) F STRIP GUIDE	29
REF	2-21002-1	SCR, BUT HD CAP (8-32 X .38) STRIPPER	28
1	3-22603-1	SCR, HEX HD CAP (10-32 X .38) SG ADJ BLOCK	27
1	1-21000-7	SCR, BUT HD SKT CAP (6-32 X .50) CAM	26
2	2-21000-7	SCR, SKT HD CAP (6-32 X .50) SCR. BLOCK	25
23030-1	23030-1	SCR, SKT HD CAP (6-32 X .25) (LOC-WEL) CP DISC	24
2	2-21000-7	SCR, SKT HD CAP (6-32 X .25) REAR SHEAR PLATE	23
REF	2-21000-7	SCR, SKT HD CAP (8-32 X .50) DEPRESSOR (REAR)	22
2	2-21002-1	SCR, BUT HD MACH (8-32 X .38) FEED FINGER	21
2	1-21000-3	SCR, SKT HD CAP (4-40 X .25) F STRIP GUIDE	20
REF	2-21002-1	SCR, BUT HD CAP (8-32 X .38) STRIPPER	19
1	3-22603-1	SCR, HEX HD CAP (10-32 X .38) SG ADJ BLOCK	18
1	1-21000-7	SCR, BUT HD SKT CAP (6-32 X .50) CAM	17
2	2-21000-7	SCR, SKT HD CAP (6-32 X .50) SCR. BLOCK	16
23030-1	23030-1	SCR, SKT HD CAP (6-32 X .25) (LOC-WEL) CP DISC	15
2	2-21000-7	SCR, SKT HD CAP (6-32 X .25) REAR SHEAR PLATE	14
REF	2-21000-7	SCR, SKT HD CAP (8-32 X .50) DEPRESSOR (REAR)	13
2	2-21002-1	SCR, BUT HD MACH (8-32 X .38) FEED FINGER	12
2	1-21000-3	SCR, SKT HD CAP (4-40 X .25) F STRIP GUIDE	11
REF	2-21002-1	SCR, BUT HD CAP (8-32 X .38) STRIPPER	10
1	3-22603-1	SCR, HEX HD CAP (10-32 X .38) SG ADJ BLOCK	9
1	1-21000-7	SCR, BUT HD SKT CAP (6-32 X .50) CAM	8
2	2-21000-7	SCR, SKT HD CAP (6-32 X .50) SCR. BLOCK	7
23030-1	23030-1	SCR, SKT HD CAP (6-32 X .25) (LOC-WEL) CP DISC	6
2	2-21000-7	SCR, SKT HD CAP (6-32 X .25) REAR SHEAR PLATE	5
REF	2-21000-7	SCR, SKT HD CAP (8-32 X .50) DEPRESSOR (REAR)	4
2	2-21002-1	SCR, BUT HD MACH (8-32 X .38) FEED FINGER	3
2	1-21000-3	SCR, SKT HD CAP (4-40 X .25) F STRIP GUIDE	2
REF	2-21002-1	SCR, BUT HD CAP (8-32 X .38) STRIPPER	1

CRIMPING DATA				APPLICATOR WILL APPLY	
PAD LTR	CRIMP HEIGHT	WIRE SIZE	WIRE LENGTH	PIN	SOCKET
A	NOT	USED		66098	66100
B	NOT	USED		66196	66198
C	.056	#16A		66298	66299
D	.051	#18		66579	66580
				66641	66642
				20861	20861
				163081	163083

WIRE RANGE	INSULATION RANGE	PRESS NO
#18 A	.080-.100	463345-1

CRIMP	SIZE	TYPE	FEED	APPL INST
	.080	F	.500	A1
INSUL	.120	O		

REMARKS	NO	REV
TO APPLY TERMINAL	114	10004
DISTRIBUTION		
ORIGINAL		
CUSTOMER COPY		
FIELD ENG COPY		

REMARKS	NO	REV
#16 WIRE IS NOT RECOMMENDED		

DATE	BY	APP	DATE	BY	APP
0150-0437-02	7-02		0150-0437-02	7-02	
0150-0309-00	5-00		0150-0309-00	5-00	
0150-6987-96	7-96		0150-6987-96	7-96	