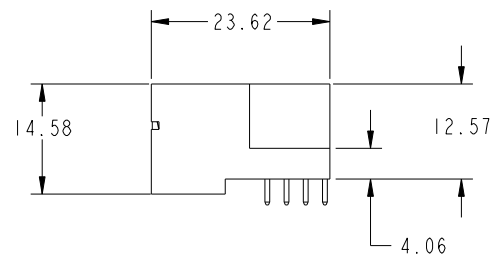
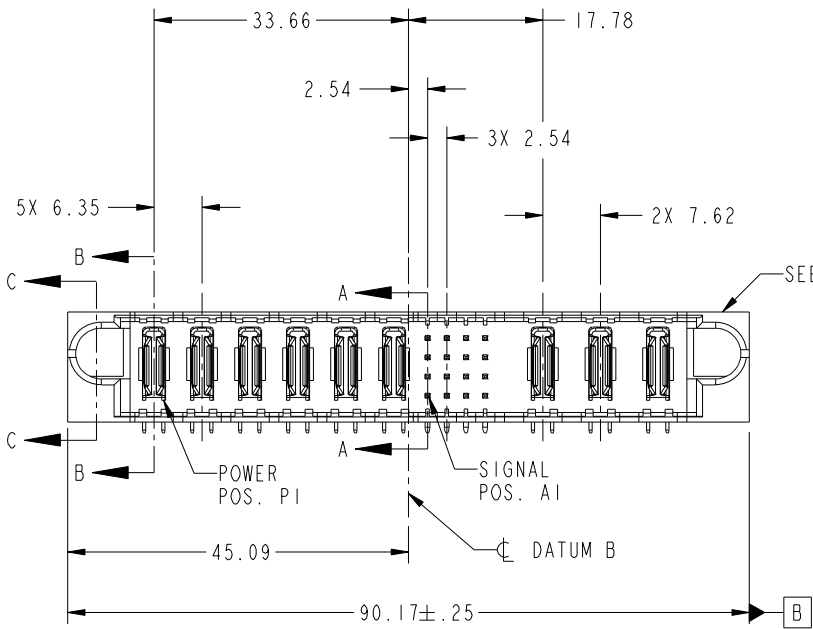
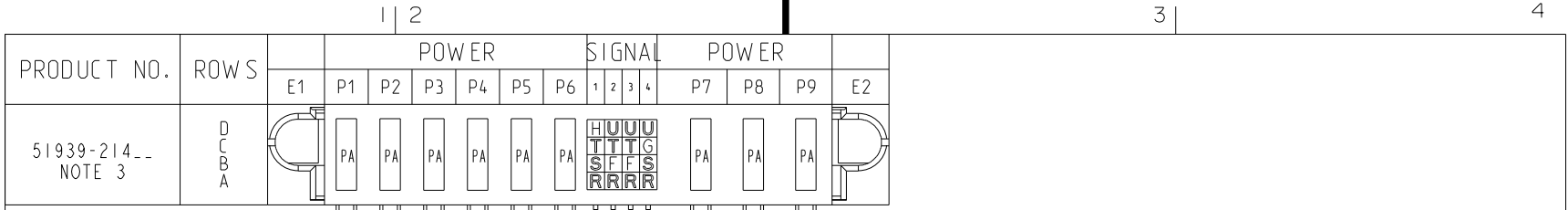


Tous droits strictement réservés. Reproduction ou communication a des tiers interdite sous quelque forme que ce soit sans autorisation écrite du propriétaire. Propriété de c.FCI. Droits de reproduction FCI.

All rights strictly reserved. Reproduction or issue to third parties in any form whatever is not permitted without written authority from the proprietor. Property of FCI. Copyright FCI.



CODE	DIM "M" MATING LENGTH	CONTACT TYPE
U	[6.86]	SIGNAL
T	[6.86]	SIGNAL
S	[6.86]	SIGNAL
R	[6.86]	SIGNAL
H	[5.59]	SIGNAL
G	[5.59]	SIGNAL
F	[5.59]	SIGNAL
PA	[N/A]	POWER

mat'l code				SEE NOTE		tolerances unless otherwise specified		CUSTOMER	
lir	ecn no.	dr	date	linear	0.X ±0.5	COPY		www.fciconnect.com title 6P+16S+3ACP R/A STB HEADER	
A	DG05-0516	Ryan	12/01/05	0.XX ±0.25	projection				
B	DG07-0498	JW	09/13/08	angles	0.XXX ±0.10			product family PwrBlade code 213	
				dr	0° ±2°	MM		size dwg no	
				enr	RYAN YUAN 12/01/05	scale 1:1		A 51939-214 sheet 1 of 4	
				chr	SALLY LUO 12/02/05				
				appd	VICTOR LIN 12/01/05				
					JOSEPH HSIA 12/01/05				
sheet index	revision sheet	B 1	B 2	B 3	B 4				

product family PwrBlade		code 213
size dwg no		sheet 1 of 4
A 51939-214		

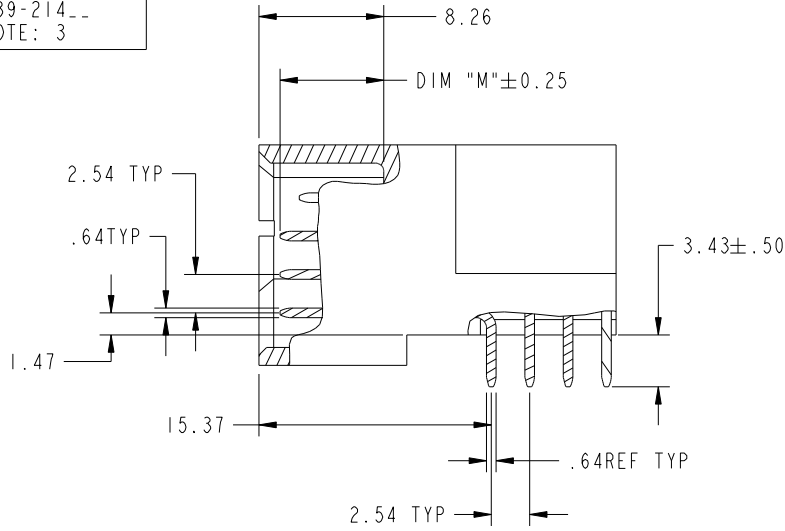
Tous droits strictement reserves. Reproduction ou communication a des tiers interdite sous quelque forme que ce soit sans autorisation ecrite du proprietaire. Propriete de c.FCI. Droits de reproduction FCI.

All rights strictly reserved. Reproduction or issue to third parties in any form whatever is not permitted without written authority from the proprietor. Property of FCI. Copyright FCI.

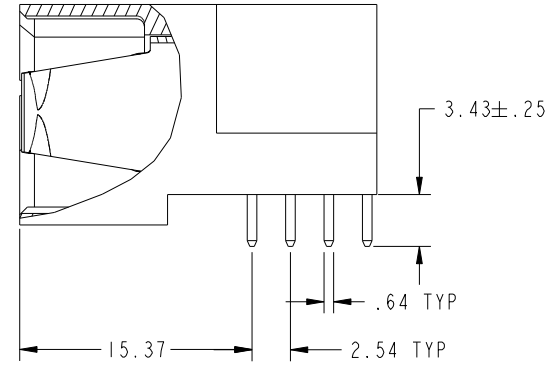


PRODUCT NUMBER

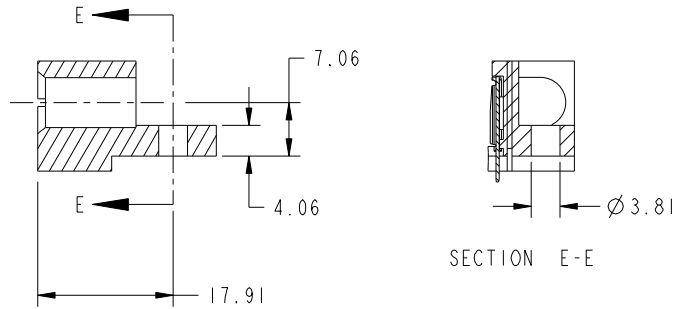
51939-214--
NOTE: 3



SECTION A-A
SCALE 2:1



SECTION B-B
SCALE 2:1



SECTION C-C

SECTION E-E

mat'l code				SEE NOTE		tolerances unless otherwise specified		CUSTOMER		www.fciconnect.com	
lir	ecn no.	dr	date	linear	0.X ± 0.5	COPY		projection		title	
B					0.XX ± 0.25					6P+16S+3ACP R/A STB HEADER	
				angles	0.XXX ± 0.10					product family PwrBlade code	
				dr	0° ± 2°			MM		size	
				enr				1:1		dwg no	
				chr						51939-214	
				appd						sheet	
										2	
sheet index	revision sheet										

cage code 28506

Pro/E

PDM: Rev: B

STATUS: Released

Printed: Dec 20, 2010

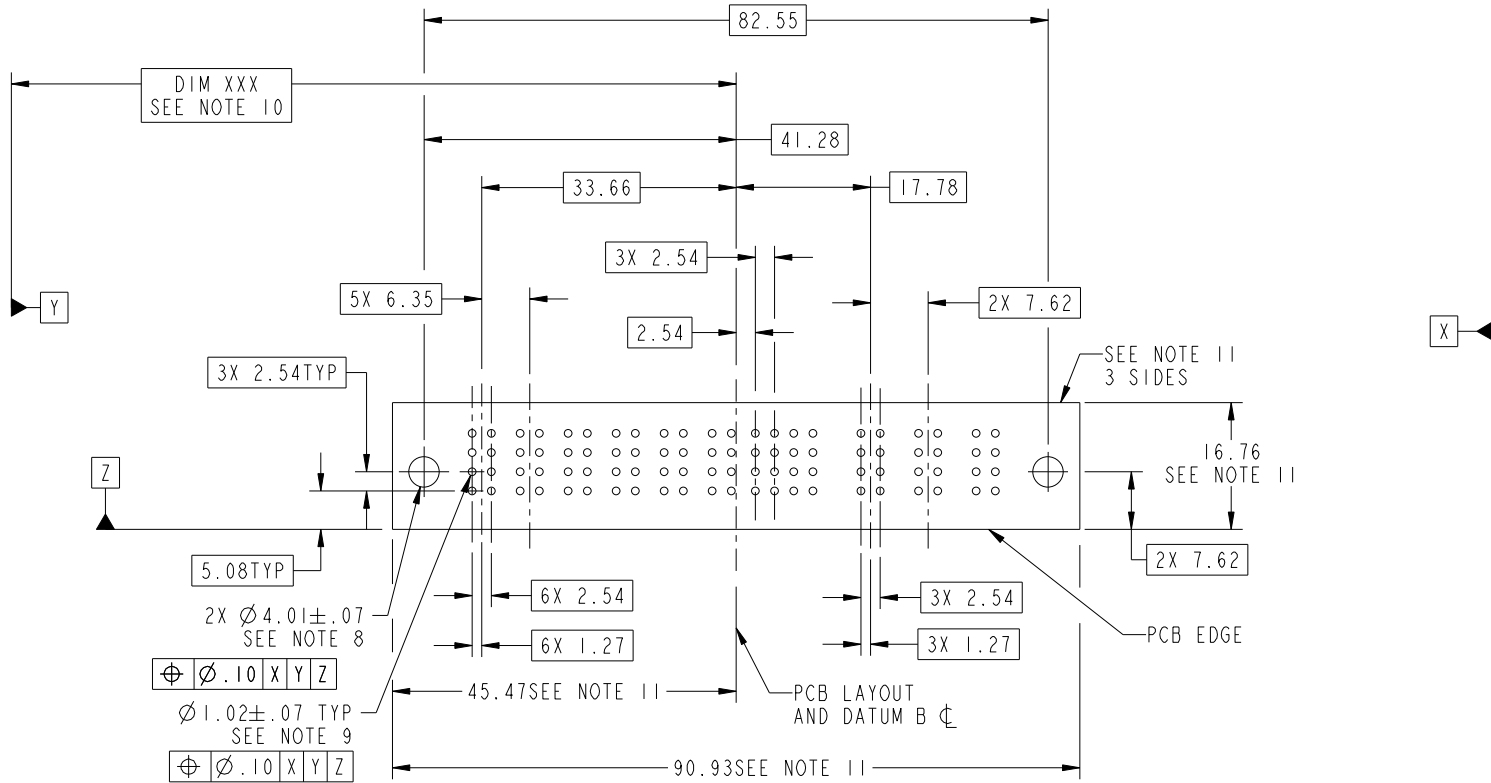
Tous droits strictement réservés. Reproduction ou communication a des tiers interdite sous quelque forme que ce soit sans autorisation écrite du propriétaire. Propriété de c.FCI. Droits de reproduction FCI.

All rights strictly reserved. Reproduction or issue to third parties in any form whatever is not permitted without written authority from the proprietor. Property of FCI. Copyright FCI.



PRODUCT NUMBER

51939-214--
NOTE: 3



RECOMMENDED PCB LAYOUT

mat'l code		SEE NOTE		tolerances unless otherwise specified		CUSTOMER		 www.fciconnect.com	
lfr	ecn no.	dr	date	linear	0.X ± 0.5	COPY		title	
B					0.XX ± 0.25	projection		6P+16S+3ACP R/A STB HEADER	
				angles	0.XXX ± 0.10			product family	
				dr	0° ± 2°	MM		PwrBlade	
				engr		scale		code	
				chr	RYAN YUAN 12/01/05	1:1		213	
				appd	SALLY LUO 12/02/05			sheet	
					VICTOR LIN 12/01/05			3	
					JOSEPH HSIA 12/01/05			size	
sheet index	revision sheet							A 51939-214	
								cage code	
								22516	

A

B

A

B

1 | 2

3 |

4

1 | 2

Pro/E

PDM: Rev: B

STATUS: Released

Printed: Dec 20, 2010

Tous droits strictement reserves. Reproduction ou communication a des tiers interdite sous quelque forme que ce soit sans autorisation ecrite du proprietaire. Propriete de c.FCI. Droits de reproduction FCI.

All rights strictly reserved. Reproduction or issue to third parties in any form whatever is not permitted without written authority from the proprietor. Property of FCI. Copyright FCI.



1 | 2

3

4

PRODUCT NUMBER
51939-214--
NOTE: 3

NOTES:

1. DIMENSIONS AND TOLERANCES ARE IN ACCORDANCE WITH ASME Y14.5M, 1994 UNLESS OTHERWISE SPECIFIED.

CONNECTOR NOTES:

2. MATERIAL: HOUSING MATERIAL: UL 94 V-0 GLASS FILLED HIGH-TEMP THERMOPLASTIC
POWER CONTACT MATERIAL: COPPER ALLOY
SIGNAL PIN MATERIAL: COPPER ALLOY

3. PLATING:

SEE ITEM 1 & 2 IN PRINT 10064183 FOR PLATING SPEC OF 51939-214; 51939-214LF PRESPECTIVELY

4. MANUFACTURER'S NAME, P/N, AND DATE CODE TO APPEAR ON THIS SURFACE.

5. PRODUCT SPECIFICATION GS-12-149.
APPLICATION SPECIFICATION BUS-20-067.

6. PACKAGED IN TRAYS.

PCB NOTES:

7. ALL HOLE DIAMETERS ARE FINISHED HOLE SIZE.

8. MOUNTING HOLES, WHERE APPLICABLE, ARE UNPLATED.

9. $\varnothing 1.151 \pm 0.025$ DRILLED HOLES PLATED WITH) 0.008 MIN SnPb OR Sn OVER 0.03 TO 0.08 Cu PLATING TO ACHIEVE $\varnothing 1.02 \pm 0.07$ HOLE.

10. "DIM XXX" TO BE DETERMINED BY THE CUSTOMER.

11. CONNECTOR KEEP-OUT ZONE.

12. A/B SYMBOL WILL BE NEXT TO ANY DIMENSION, VIEW, OR NOTE WHICH HAS BEEN MODIFIED WITH THE CURRENT DRAWING REVISION.

mat'l code		SEE NOTE		tolerances unless otherwise specified		CUSTOMER		FCI		www.fciconnect.com	
lir	ecn no.	dr	date	linear	0.X ± 0.5	COPY				title	
B					0.XX ± 0.25	projection				6P+16S+3ACP	
				angles	0.XXX ± 0.10					R/A STB HEADER	
					0° ± 2°	MM		product family		code	
				dr	RYAN YUAN 12/01/05	scale		PwrBlade		213	
				enrg	SALLY LUO 12/02/05	1:1		size		sheet	
				chr	VICTOR LIN 12/01/05	A		51939-214		4	
				appd	JOSEPH HSIA 12/01/05						
sheet index	revision sheet										

1 | 2

Pro/E

PDM: Rev: B

STAT: Released

Printed: Dec 20, 2010

A

A

B

B

cage code 2256

4