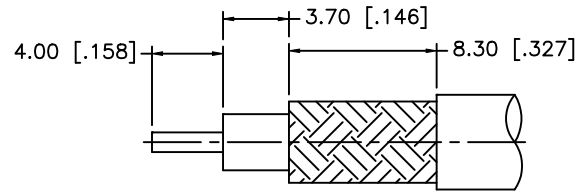
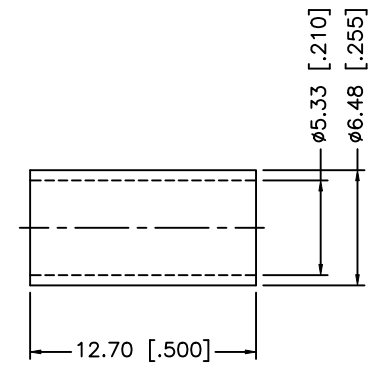
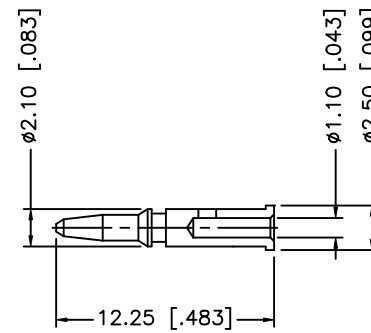
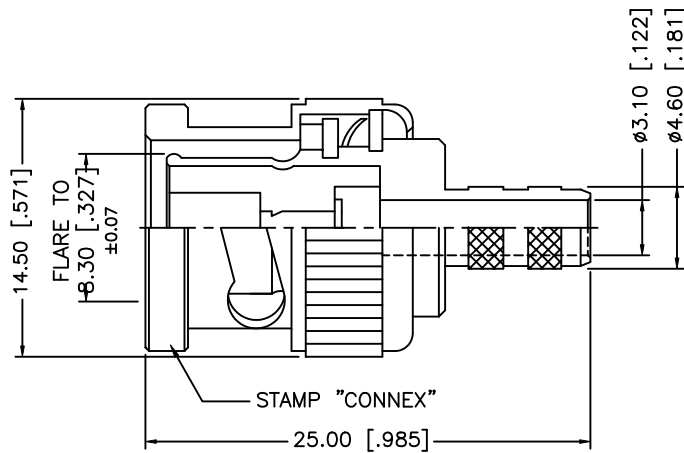


REV.	DATE	ECR NO.	DESCRIPTION
A	04/04/03	-	UPDATE DRAWING FORMAT
B	09/21/08	-	ADD COUPLING NUT TO BOM



RECOMMENDED CABLE STRIPPING DIMENSIONS



NOTES:

1. CRIMPED FERRULE HEX CRIMP SIZE .213" [5.41]
2. CRIMPED CONTACT PIN HEX CRIMP SIZE .068" [1.72]

				UNLESS OTHERWISE SPECIFIED DIMENSIONS ARE IN MILLIMETERS. DIMENSIONS IN [] ARE IN INCHES AND FOR CUSTOMER REFERENCE ONLY.	APPROVALS	DATE	<h1>Amphenol Connex</h1>				
8					DRAWN	GRS					09/21/08
7					CHECKED			PART NO. 112120			
6					ISSUED						
5	FERRULE	COPPER	NICKEL	1	SHEET	1 OF 1		REV. B SIZE A SCALE NA			
4	CONTACT PIN	BRASS	GOLD	1							
3	INSULATOR	DELTRIN	NATURAL	1				DO NOT SCALE DRAWING			
2	COUPLING NUT	DIECAST	NICKEL	1							
1	BODY	BRASS	NICKEL	1				DESCRIPTION MATERIAL FINISH QTY			
	DESCRIPTION	MATERIAL	FINISH	QTY							