

MATERIAL

Glass-fibre reinforced polyamide based (PA) technopolymer, black colour, glossy finish.

ARMS

Matte chrome-plated steel complete with handles I.622 (see page 634) in technopolymer.

STANDARD EXECUTION

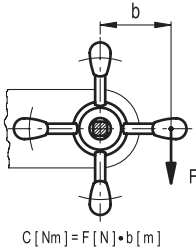
Black-oxide steel boss, uncovered front end with pre-drilled pass-through hole.

ACCESSORIES ON REQUEST

Axial retaining washer GN 184 (see page 1021).

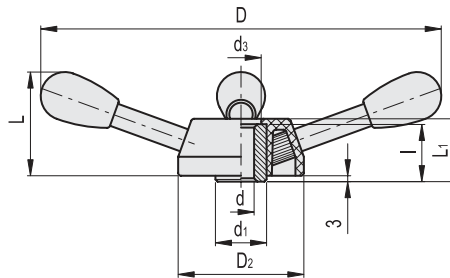


ELESA Original design



Conversion Table
1 mm = 0.039 inch

D	
mm	inch
200	7.87
274	10.79
312	12.28
363	14.29



METRIC

Code	Description	D	dH9	L	L1	D2	d1	d3	l	C# [Nm]	⚖️
65901	VBR.4/200	200	10	60	42	86	35	34	38	195	780
65911	VBR.4/280	274	10	74	42	86	35	34	38	195	1030
65921	VBR.4/320	312	10	80	42	86	35	34	38	195	1150
65931	VBR.4/370	363	10	90	42	86	35	34	38	195	1315

For maximum applicable torque (C) see Technical Data on page A-3 A-3.

- 1
- 2
- 3
- 4
- 5
- 6
- 7
- 8
- 9
- 10
- 11
- 12
- 13
- 14
- 15
- 16
- 17
- 18