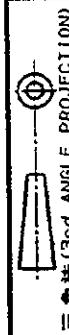
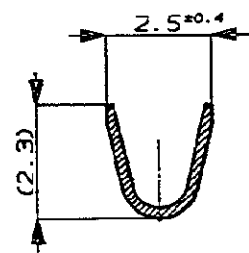
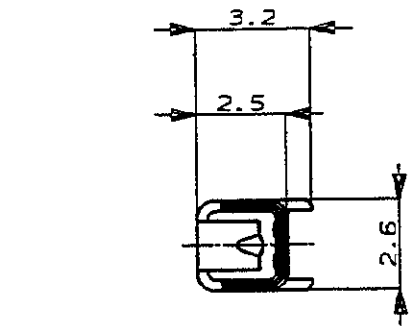


NUMBER C-175124

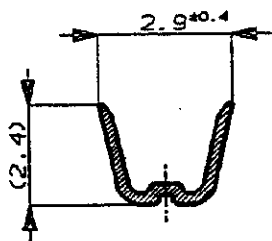


METRIC

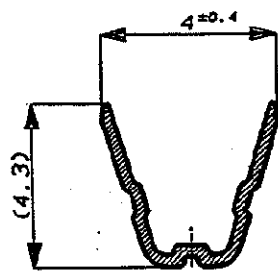
PRINT DIST  
単位: 略 DIMENSIONS IN MM. DO NOT SCALE PRINT



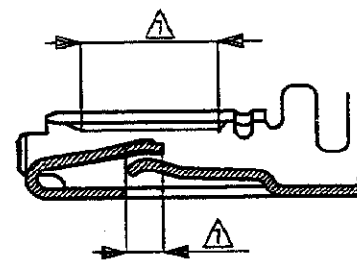
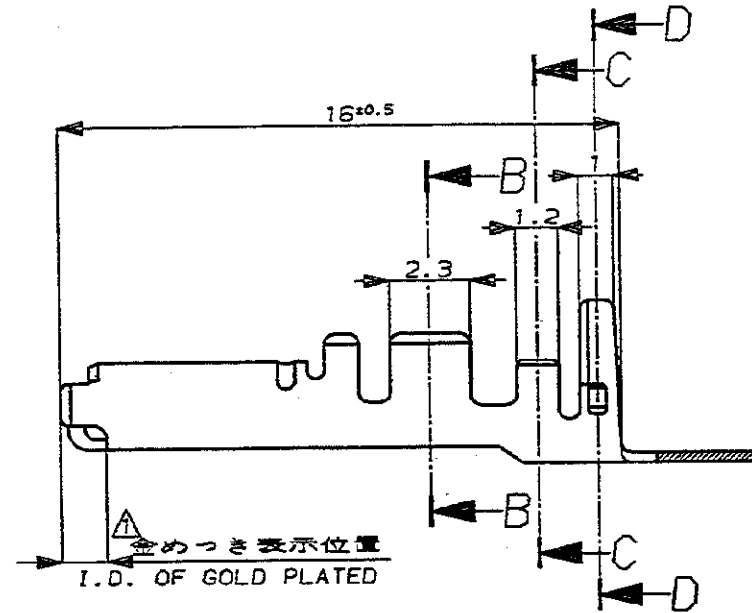
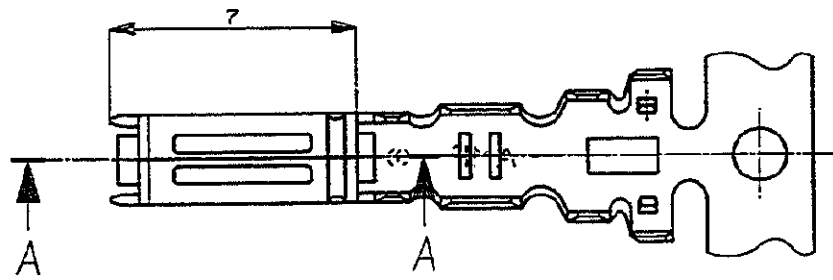
断面 B-B  
SECT. B-B



断面 C-C  
SECT. C-C



断面 D-D  
SECT. D-D



断面 A-A  
SECT. A-A

- 注 ;  
 1. 部分金めつき  
 2. 圧着規格 114-5134
- NOTES;  
 1. SELECTIVE GOLD  
 2. CRIMP SPEC. 114-5134

△SELECTIVE GOLD 部分金めつき	175124-2
PRE-TINNED 錫めつき済	175124-1
FINISH 仕上げ	AMP PART NO. 製品型番

LTR	作成 (J-1380)	DR	CHK	DATE

Copyright ©1992年 AMP (Japan) LTD. ALL RIGHTS RESERVED.	Copyright ©1992 AMP (Japan) LTD. ALL RIGHTS RESERVED.
適合電線断面径 (WIRE RANGED) 0.3-0.56 mm <sup>2</sup> (AWG#22-#20)	被覆外径 (INSULATION DIA.) 1.0-1.4 mmφ
材料 (MATERIAL) THICKNESS BRASS, 板厚: 0.25	仕上 (FINISH) SEE TABLE 表参照
DR. Y. Masuhiko	DE. Y. Masuhiko
CHK. J. Asahara	APP. J. Asahara

AMP		東京エー・エム・ピー株式会社 Tokyo, Japan	
名称 (NAME) .070 SERIES RECEPTACLE .070 シリーズ リセプタクルコンタクト			
一般公差 (GENERAL TOLERANCE) 10mm以下: ±0.2 10mm以上 30mm以下: ±0.25 30mm以上 100mm以下: ±0.3 角 度: ±3°	LOC B J	番号 (No.) C-175124	
尺度 (SCALE) 5-1	REV. 0	SHEET 1 OF 1	

(CUSTOMER DRAWING) 参考 ☒ 面