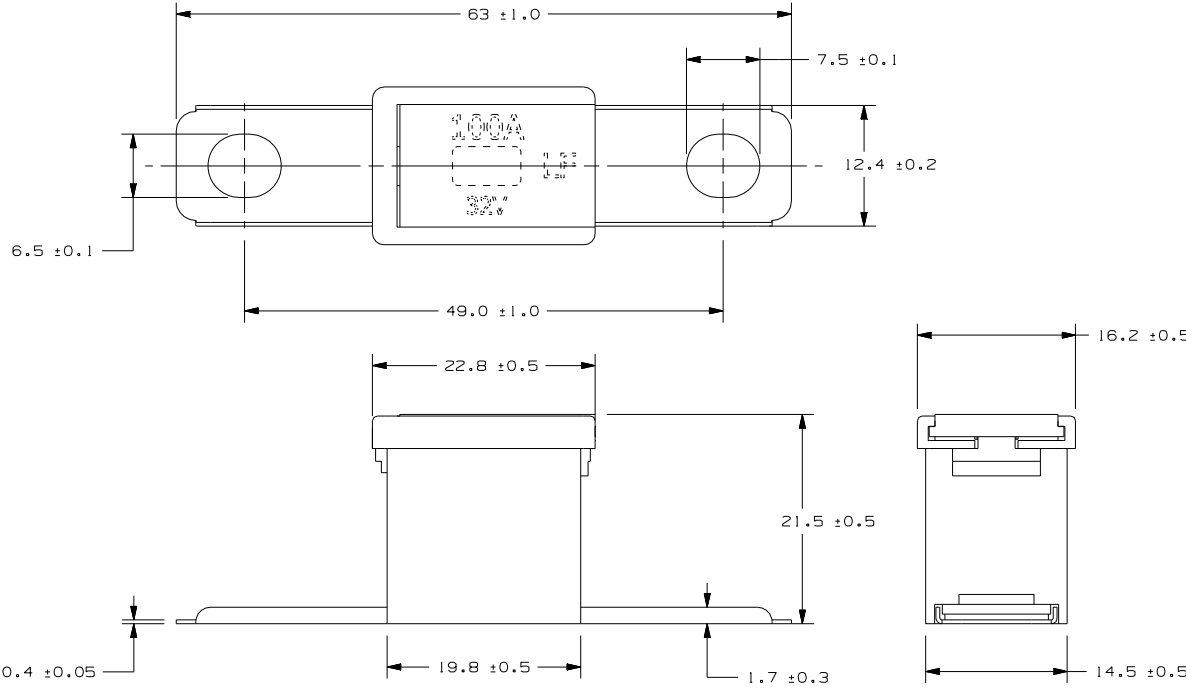


CAD GENERATED DRAWING - NO PENCIL CHANGES ALLOWED

PART NUMBER	CURRENT RATING (A)	BODY COLOR	RATED VOLTAGE
0295020.MXJ	20	LIGHT BLUE	32V
0295030.MXJ	30	PINK	
0295040.MXJ	40	GREEN	
0295050.MXJ	50	RED	
0295060.MXJ	60	YELLOW	
0295070.MXJ	70	BROWN	
0295080.MXJ	80	BLACK	
0295100.MXJ	100	BLUE	
0295120.MXJ	120	WHITE	
0295140.MXJ	140	REDDISH BROWN	

% OF RATED CURRENT	OPENING TIME	
	MIN	MAX
110%	14,400 SEC.	-
200%	5 SEC.	100 SEC.
350%	0.2 SEC.	7 SEC.
600%	0.04 SEC.	1 SEC.



METRIC

UNLESS OTHERWISE SPECIFIED, DIMENSIONS ARE IN MILLIMETERS.
DIMENSIONS IN BRACKETS [] ARE INCHES
UNLESS OTHERWISE SPECIFIED, DIMENSIONS DO NOT INCLUDE PLATING.

© DENOTES CRITICAL CHARACTERISTICS.
CPK DENOTES CPK DIMENSIONS. -MINIMUM CPK VALUE
(ST) DENOTES A CHARACTERISTIC THAT PROVIDES AN INDICATION OF PROCESS PERFORMANCE. PROCEDURE FOR MEASUREMENT AND TRACKING TO BE DEFINED IN LITTLE FUSE INSPECTION INSTRUCTIONS
CP DENOTES CP DIMENSIONS. -MINIMUM CP VALUE MUST BE WITHIN THE DIMENSIONAL LIMITATIONS SHOWN ON DRAWING AND INITIALLY LOCATED TO ALLOW FOR MAXIMUM TOOL LIFE

NO	COMPONENT NO	DESCRIPTION	QTY/M	U/M
BILL OF MATERIAL				
MATERIAL SPEC				

LTR	DATE	REVISION	CHK	APD
A	03/29/10	SA201-RELEASE GMB		
B	05/25/10	SA296-RELEASE 30A THROUGH 100A GMB		
C	06/07/10	SA314-RELEASE 120A GMB		

COPIES TO	FINISH	SCALE	DATE	DATE	DATE	GRAMS/PIECE
1 9		2:1	03/29/10			
2 10						
3 12						
4 13						
5 14						
6 15						
7 16						
8 17						

DIMENSION	TOLERANCE	PROJECTION	3RD ANGLE
0.5 - 9.5	±0.1		
9.5 - 25	±0.15		
25 - 50	±0.2		
50 - 120	±0.3		
120 - 400	±0.5		

TOLERANCES UNLESS OTHERWISE SPECIFIED (REF. ISO 2768-MK)

TITLE FUSE - PAL 295 ATI 32V SLOW BLOW

REVISION DRWG. NO. C OL-0295000.MXJ

OUTLINE

Littlefuse
DES PLAINES, ILLINOIS 60016