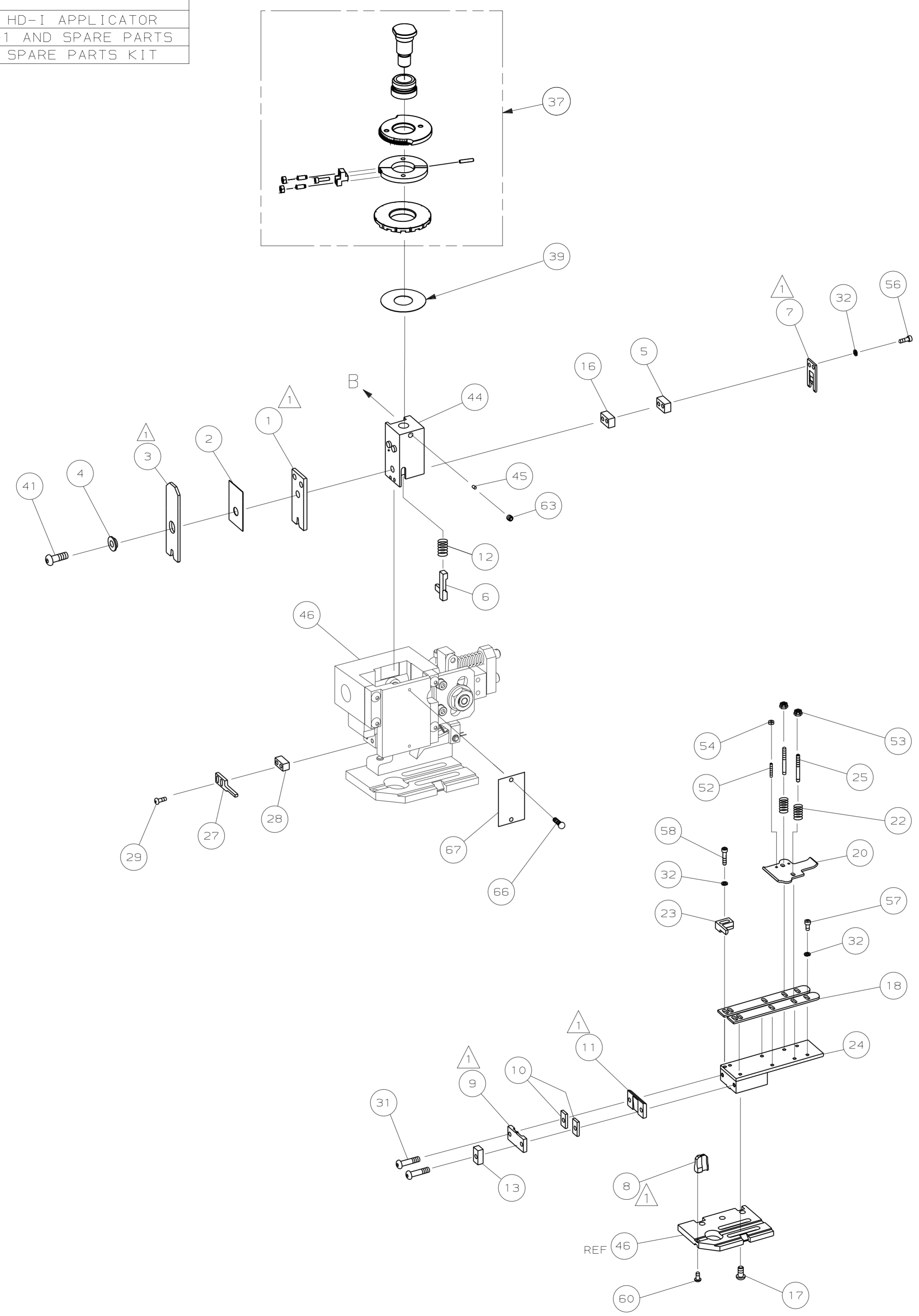
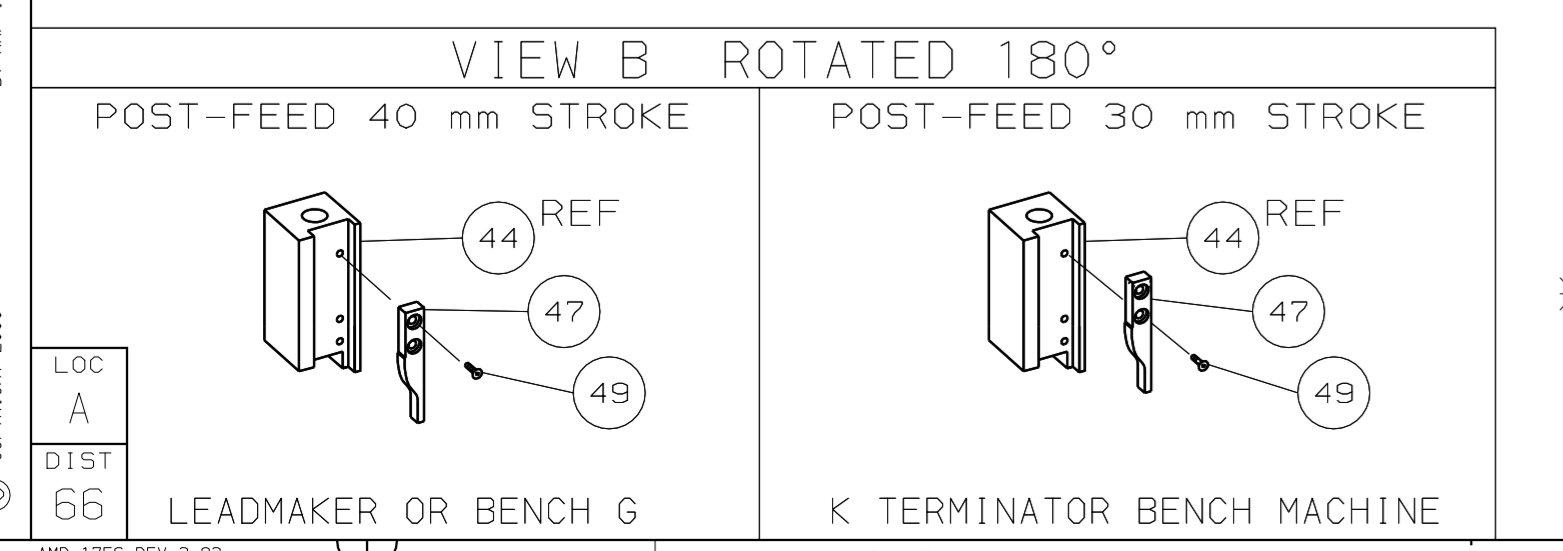


PART NUMBER	REV	FIRST USED	TERMINATOR	FEED TYPE	DESCRIPTION
1529004-1	D		BENCH & LEADMAKER	MECH POST FEED	HD-I APPLICATOR
7-1529004-1	D		BENCH & LEADMAKER	MECH POST FEED	-1 AND SPARE PARTS
7-1529004-7	A				SPARE PARTS KIT

CRIMP DATA (AMP TERMINAL)			
TERMINAL NAME: FASTIN-FASTON TAB "5MM SERIES"			
CRIMP	SIZE	TYPE	RANGE
WIRE	2.79 [1.110 IN]	F	1.00 - 3.00mm ²
INSUL	4.57 [1.180 IN]	F	2.10-3.10 [1.083-.122 IN]
WIRE STRIP LENGTH		APPL INSTRUCTION	
5.00-6.00 [1.197-.236 IN]		408-8323 & 408-8490	
TERMINAL		FEED	
APPL SPEC 114-15070 (A) 114-15007 (B)		27.50 [1.082 IN]	
TERMINALS APPLIED			
144839 (A)	-	-	-
142108 (B)	-	-	-
142089 (B)	-	-	-
-	-	-	-
-	-	-	-
-	-	-	-
-	-	-	-
-	-	-	-
-	-	-	-
-	-	-	-
WIRE SIZE	CRIMP HEIGHT	REF SETTING	
mm ² AWG			
3.00mm ²	2.23 ±0.05 [1.088 ±.002 IN]	A 1	
2.00mm ²	1.98 ±0.05 [1.078 ±.002 IN]	B 8	
1.0mm ² & 1.0mm ²	1.98 ±0.05 [1.078 ±.002 IN]	B 8	
0.5mm ² & 1.5mm ²	1.95 ±0.05 [1.077 ±.002 IN]	C 0	
1.40mm ²	1.78 ±0.05 [1.070 ±.002 IN]	C 3	
1.0mm ² & 0.5mm ²	1.78 ±0.05 [1.070 ±.002 IN]	C 3	
0.5mm ² & 0.5mm ²	1.65 ±0.05 [1.065 ±.002 IN]	E 0	
1.00mm ²	1.62 ±0.05 [1.064 ±.002 IN]	E 1	
-	-	-	
-	-	-	
-	-	-	
-	-	-	
-	-	-	
-	-	-	

- RECOMMENDED SPARE PARTS.
- GREASE RAM, CAM, CAM FOLLOWER AND FEED ROD LIGHTLY.
 - LUBRICATE DAILY PER THE APPLICATOR INSTRUCTION SHEET SUPPLIED WITH THE APPLICATOR.



*** WARNING:**
ON INSTALLATION, SET WIRE DISC TO LARGEST WIRE SIZE SETTING.
USE OF SETTINGS BELOW MIN REQ'D CRIMP HEIGHT SETTING WILL CAUSE DAMAGE TO CRIMP TOOLING.

QTY	REQD	PER ASSY	PART NO	DESCRIPTION	ITEM NO	
-	1	1	1529004	PRINT, APPLICATOR LOG SHEET	73	
-	1	1	1338705-4	DOCUMENTATION PACKAGE	72	
					70	
					68	
-	1	1	461264-5	PLATE, IDENTIFICATION	67	
-	2	2	21017-2	SCR,DRIVE (#2X.19) ID PLATE	66	
					65	
					64	
-	1	1	3-18031-0	SCR,SKT SET (M6X6) RAM	63	
					62	
					61	
-	1	1	18024-7	SCR,BHC (M4X10) ANVIL	60	
					59	
-	2	2	1-18023-3	SCR,SHC (M4X16) HOLD DOWN	58	
-	5	5	18023-9	SCR,SHC (M4X6) STRIP GUIDE	57	
-	2	2	1-18023-4	SCR,SHC (M4X20) SLUG BLADE	56	
					55	
-	2	2	18029-1	NUT, HEX (M3) DRAG	54	
-	2	2	986965-1	NUT, HEX SL (M4) DRAG STUD	53	
-	2	2	2-18032-2	SCR,SKT SET (M3X10) DRAG	52	
					51	
					50	
-	1	1	18024-3	SCR,BHC (M3X10) CAM	49	
					48	
-	1	1	1338676-1	CAM, POST-FEED 30 & 40 mm ST	47	
-	1	1	1338662-1	APPLICATOR, BASIC (SUBASSY)	46	
-	1	1	690191-1	PLUG, NYLON	45	
-	1	1	1320998-1	RAM	44	
					43	
					42	
-	1	1	2-18024-6	SCREW,BHC (M8X25) CRIMPER	41	
					40	
-	1	1	690125-1	SHIM SUBASSY	39	
					38	
-	1	1	879103-3	FINE ADJUST HEAD SUBASSY	37	
					36	
					35	
					34	
					33	
-	9	9	18025-2	WASHER, LOCK (M4) SHEAR BL	32	
-	1	1	4-18024-2	SCR,BHC (M4X30) SHEAR PL	31	
-	1	1	4-18024-7	SCR,BHC (M4X25) SHEAR PL	30	
-	2	2	18024-8	SCR,BHC (M4X12) STRIPPER	29	
-	1	1	3-690451-2	SPACER, STRIPPER	28	
-	1	1	240639-1	STRIPPER	27	
					26	
-	2	2	1320906-1	DRAG, STUD	25	
-	1	1	1320995-4	STRIP GUIDE	24	
-	1	1	240825-3	PLATE, STRIP HOLD DOWN	23	
-	2	2	4-22281-1	SPRING, DRAG	22	
					21	
-	1	1	1338665-1	DRAG, STOCK	20	
					19	
-	2	2	1338663-4	GUIDE, LOWER STRIP	18	
-	4	4	1-18024-8	SCR,BHC (M6X12) STRIP GD PL	17	
-	1	1	1338708-1	SPACER, SLUG BLADE	16	
					15	
					14	
-	1	1	690481-1	SPACER, HOLD DOWN	13	
-	1	1	23846-1	SPRING, HOLD DOWN	12	
-	1	1	482305-1	PLATE, REAR SHEAR	11	
-	2	2	1-240645-6	SPACER, SHEAR PLATE	10	
-	1	1	690783-3	PLATE, FRONT SHEAR	9	
-	1	2	1333219-2	ANVIL	8	
-	1	1	1-691157-2	BLADE, SLUG	7	
-	1	1	944026-2	HOLD DOWN, TERMINAL	6	
-	1	1	8-240641-3	SPACER, SLUG BLADE	5	
-	1	1	238009-1	SPACER, BLOCK CRIMPER	4	
-	1	2	4-456134-6	CRIMPER, INSULATION	3	
-	1	1	455888-4	SPACER, CRIMPER	2	
-	1	2	456408-6	CRIMPER, WIRE	1	
-	77	-71	-1	PART NO	DESCRIPTION	ITEM NO
REVISION OF EACH ASSY NO (WHEN BLANK, USE DWG REVISION)						

DIMENSIONS: mm [INCHES]		MATL	HT	TR	FIN
DO NOT SCALE PRINT.					
TOLERANCES UNLESS OTHERWISE SPECIFIED:					
1 PLC DEC ±					
2 PLC DEC ±					
3 PLC DEC ±					
ANGLES ±					
SURF TEXTURE: ✓					
REMOVE BURRS, BREAK SHARP EDGES RO.38 MAX					
DR L.L.OFTHOUSE		APP F.BACKHURST	AMP Incorporated Harrisburg, PA 17105-3608		
CHK -		REL 04JUL01	NAME END FEED HD-I F/ADJ APPL		
L.L.OFTHOUSE		SCALE -		DWG NO 1529004	MACHINE REF HD-I APPL
D ECR-06-022694		RK	SEP06	SHEET 1 OF 1	
P F LTR	REVISION RECORD	APP	DATE	REV D	
CAGE CODE 00779 CUSTOMER AND ASSEMBLY DRAWING					
RESTRICTED TO					

THIS DRAWING IS A CONTROLLED DOCUMENT.

LAYOUT L1339509
SET UP GAGE 458638-3

2000 .
RELEASED FOR PUBLICATION
BY AMP INCORPORATED. ALL RIGHTS RESERVED.
THIS DRAWING IS UNPUBLISHED.
COPYRIGHT 2000

1529004

D

C

B

A