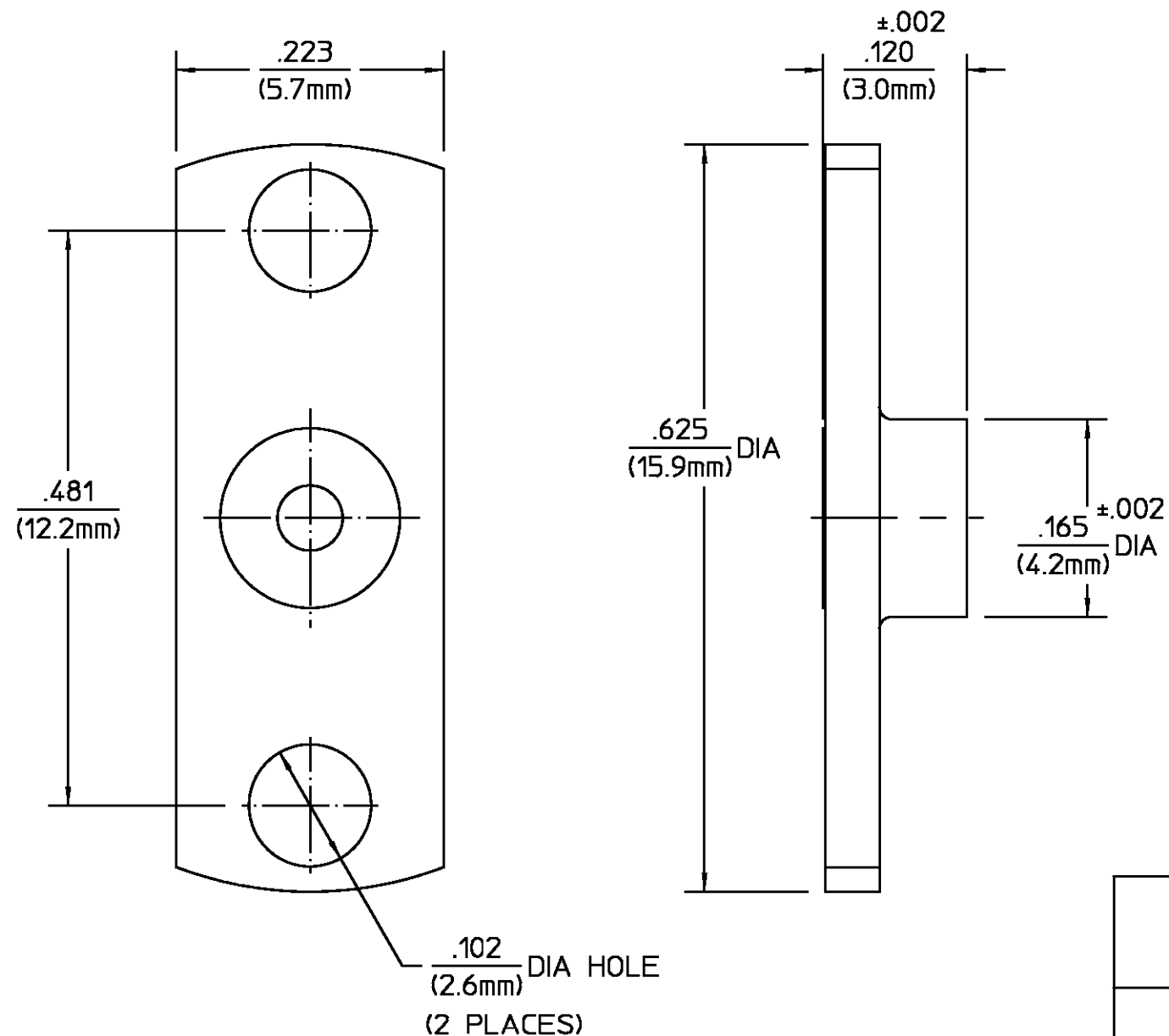


REVISIONS			
REV	DESCRIPTION	DATE	APPROVED
040	REVISED	10/16/95	DPG 10/19/95



SHROUD	STAINLESS STEEL PER ASTM-A484 AND ASTM- A582, TYPE 303	PASSIVATE PER ASTM-A380
COMPONENT	MATERIAL	FINISH
UNLESS OTHERWISE SPECIFIED DIMENSIONS ARE IN INCHES TOLERANCE ON	DRAWN BY <i>E.F.H.</i> DATE 1/13/92 CHECKED BY MY 1-15-92 APP'D BY <i>RAC</i> 1/15/92	AMP AMP Incorporated 140 Fourth Avenue Waltham, MA 02451-7599
FRAC. DEC. ANGLES ± 1/64 ±.005 ± 1°	USE ASS'Y PROCEDURE 408-04752 NO. AP. (29-006)	TITLE OSMP SHROUD
These drawings and specifications are the property of M/A-COM Incorporated and shall not be reproduced or copied or used in whole or in part as the basis for the manufacture or sale of item(s) without written permission.	SIZE B CODE IDENT NO. 26805 SCALE 8:1	2998-5002-02 REV 040 SHEET 1 OF 1

CUSTOMER DRAWING

AMP PART # 1056722-1
SHEET 1 OF 1 REV A