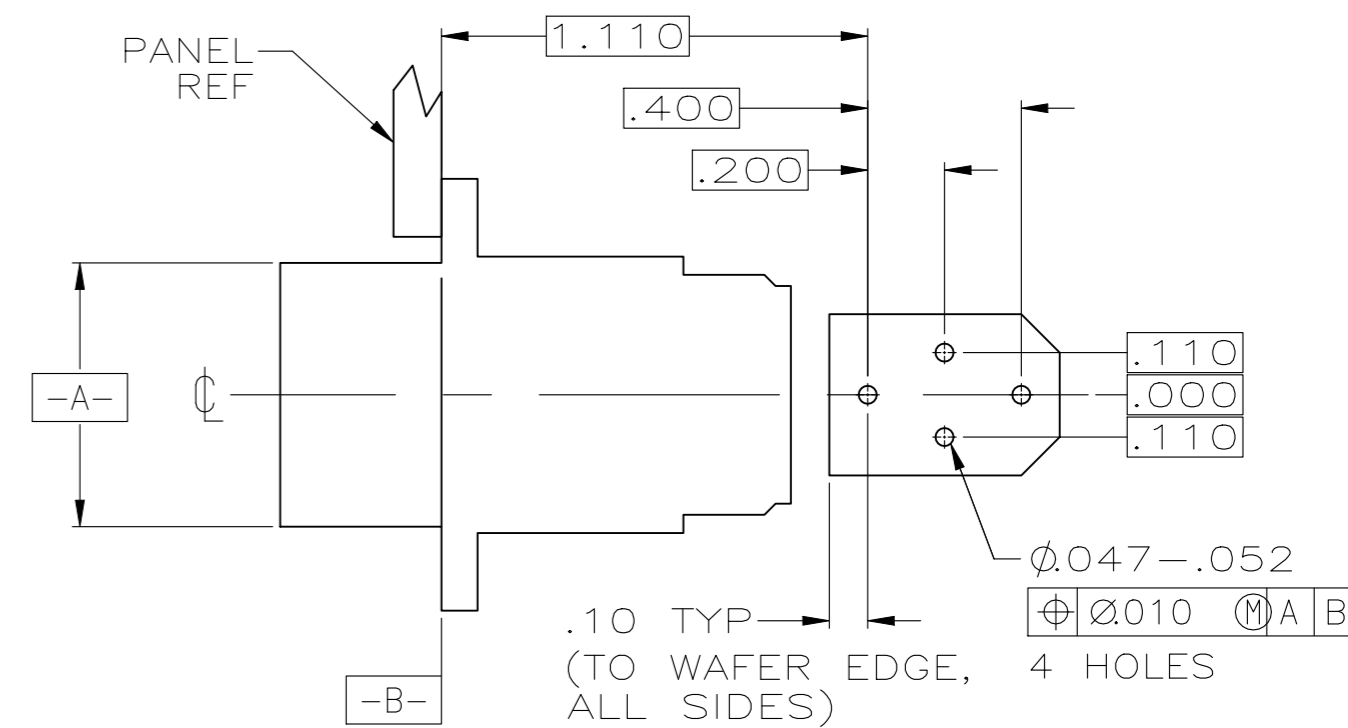
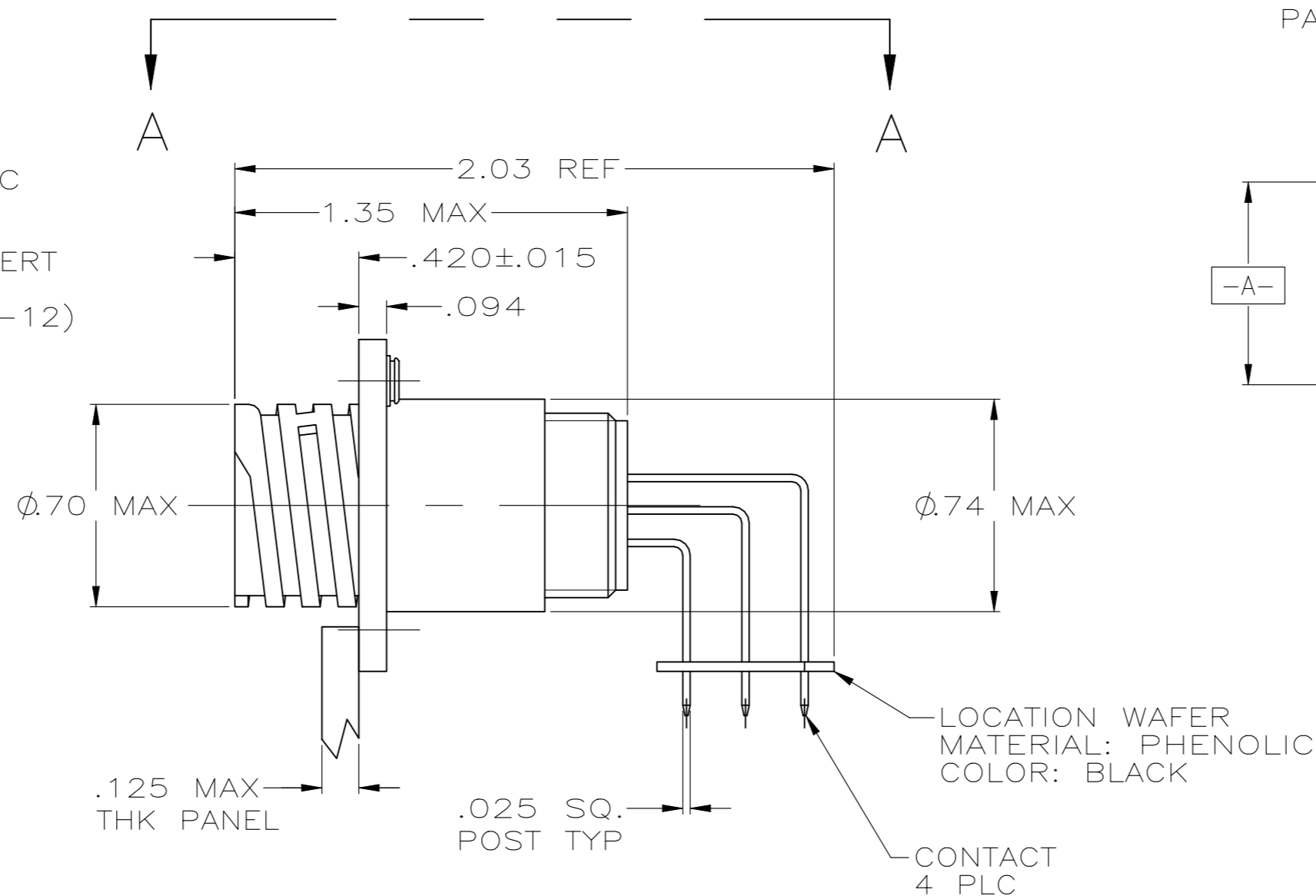
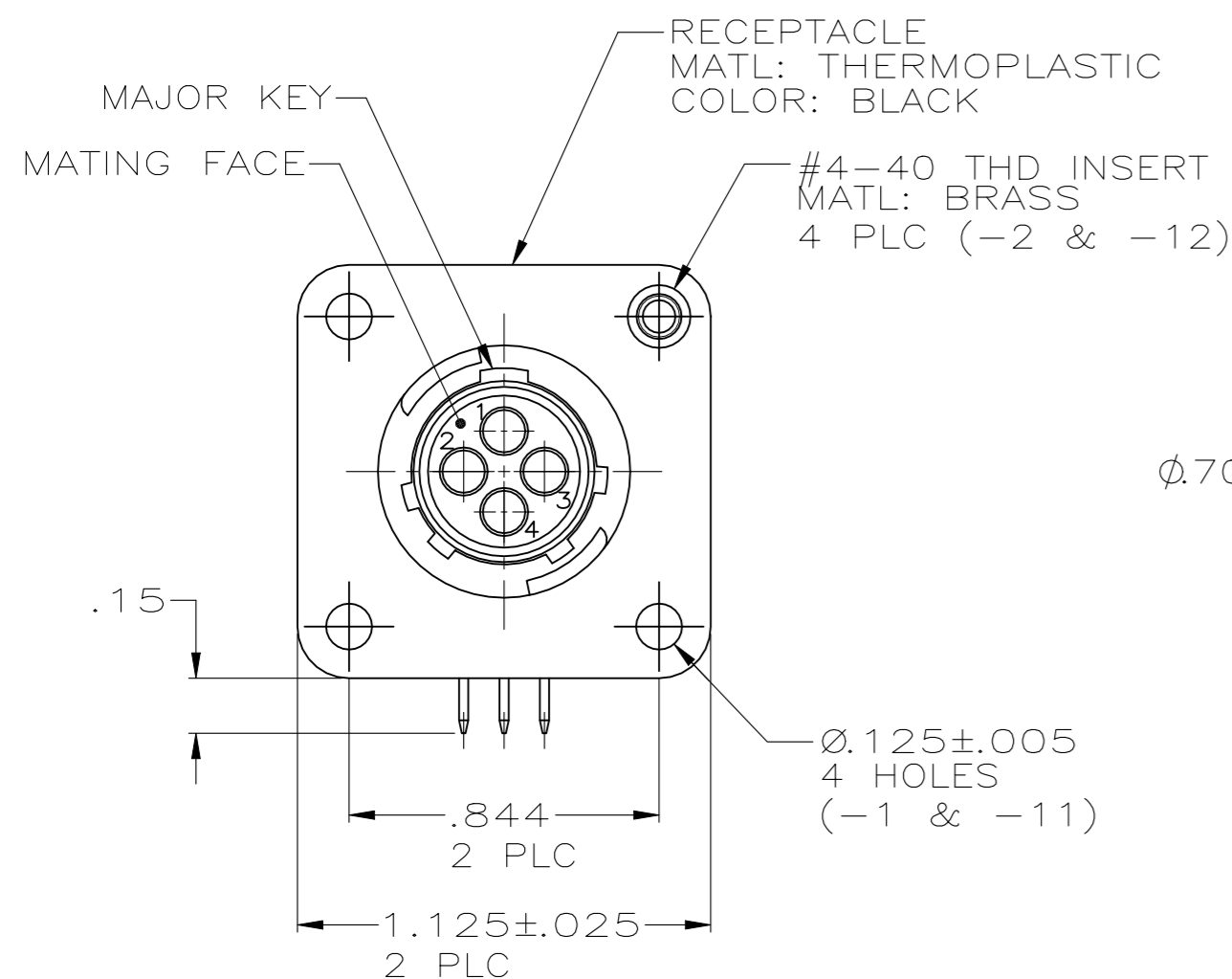
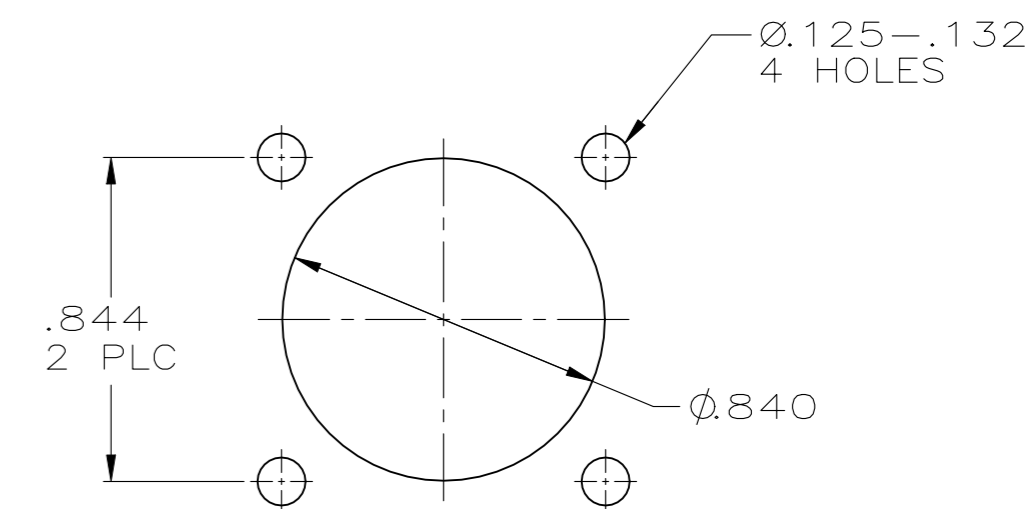


REVISIONS					
P	LTR	DESCRIPTION	DATE	DWN	APVD
E2		REVISED PER ECR-22-150475	26AUG2022	RK	MZ



VIEW A-A Δ
RECOMMENDED PC BOARD LAYOUT



- 1 CONTACT CAVITIES IDENTIFIED BY CHARACTERS ON FRONT AND REAR FACES OF CONNECTOR.
- 2 #4 FASTENER RECOMMENDED FOR -1 MOUNTING.
#4 FASTENER REQUIRED FOR -2 MOUNTING.
- Δ 3 CONTACT BODY: .000030 MIN GOLD FOR A LENGTH OF .250 MIN FROM MATING END, WITH REMAINDER TO BE GOLD FLASH, BOTH OVER .000050 MIN NICKEL.
CONTACT POST: .000100 MIN TIN-LEAD OVER .000100 MIN COPPER.
- Δ 4 PC BOARD HOLE PATTERN IS DEFINED RELATIVE TO CONNECTOR C.L. AND PANEL MOUNTING FACE INDICATED.
- Δ 5 CONTACT BODY: .000030 MIN GOLD FOR A LENGTH OF .250 MIN FROM MATING END, WITH REMAINDER TO BE GOLD FLASH, BOTH OVER .000050 MIN NICKEL.
CONTACT POST: .000100 MIN TIN OVER .000100 MIN COPPER.

RECOMMENDED
PANEL CUTOUT

	Δ 5	W/INSERTS	1-796403-2
	Δ 5	W/O INSERTS	1-796403-1
OBSOLETE	Δ 3	W/INSERTS	-796403-2-
OBSOLETE	Δ 3	W/O INSERTS	-796403-1-
		CONTACT FINISH	CONFIG. PART NUMBER

THIS DRAWING IS A CONTROLLED DOCUMENT.		DWN	2-19-00	TE TE Connectivity	
		CHK	2-24-00		
		APVD	2-24-00	NAME	
		PRODUCT SPEC		RECEPTACLE ASSY, POSTED, RT ANGLE, STD SEX, SIZE 11-4, SERIES 1, CPC	
		APPLICATION SPEC		-	
		WEIGHT	-	SIZE	RESTRICTED TO
		CUSTOMER DRAWING		A2	-
		SCALE	2:1	CAGE CODE	DRAWING NO
				00779	C=796403
		SHEET	1 of 1	REV	E2