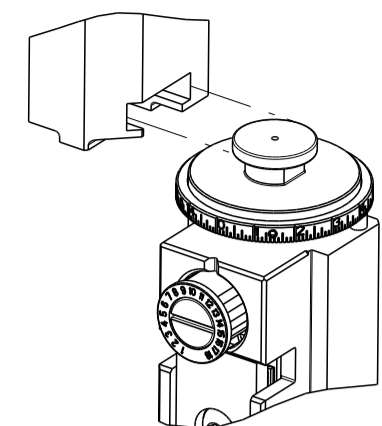


| PART NUMBER | REVISION | DESCRIPTION                     | FEED TYPE |
|-------------|----------|---------------------------------|-----------|
| 2151410-2   | F        | FINE CRIMP HEIGHT ADJUST        | PNEUMATIC |
| 7-2151410-2 | F        | PNEUMATIC AND CRIMP TOOLING KIT | PNEUMATIC |
| 7-2151410-7 | A        | CRIMP TOOLING KIT               | -         |

ATLANTIC VERSION TERMINATOR INTERFACE ADAPTER

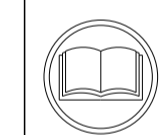


| APPLICATOR DATA |                |      |
|-----------------|----------------|------|
| CRIMP           | SIZE           | TYPE |
| WIRE            | 3.56 mm [.140] | F    |
| INSUL           | 5.16 mm [.203] | F    |

APPLICATOR INSTRUCTIONS 408-35042

| TERMINAL DATA: MTA TERMINAL                |                | MTA CRIMP SPECIFICATION     |              |
|--|----------------|-----------------------------|--------------|
| TERMINAL NAME: TERMINAL UNI F630 WITH CLIP |                |                             |              |
| WIRE STRIP LENGTH                          |                | INSULATION DIAMETER RANGE   |              |
| 4.87-5.63 mm [.192-.222 IN]                |                | ∅ 4.57 mm MAX [.180 IN MAX] |              |
| TERMINAL APPLICATION SPECIFICATION         | MTA SPEC Rev - | -                           | -            |
| TERMINALS APPLIED                          |                |                             |              |
| TE TERMINAL                                | MTA TERMINAL   | TE TERMINAL                 | MTA TERMINAL |
| 1949669-1                                  | 17.07940/10    | 1949669-2                   | 17.07901/20  |

| WIRE SIZE | CRIMP HEIGHT mm [INCH]        | CRIMP HEIGHT REFERENCE SETTING |
|-----------|-------------------------------|--------------------------------|
| 6.00mm2   | 2.55 +/- 0.05 [.100 +/- .002] | 4.4                            |
| 5.00mm2   | 2.49 +/- 0.05 [.098 +/- .002] | 5.0                            |
| 4.00mm2   | 2.40 +/- 0.05 [.094 +/- .002] | 5.8                            |



- RECOMMENDED SPARE PARTS
  - REFER TO SUPPLIED INSTRUCTION SHEET FOR CLEANING, LUBRICATION AND STORAGE OF APPLICATOR.
  - APPLY PART NUMBER 2-23419-6 LOCTITE TO THREADS OF ITEM 242.
  - CRIMP HEIGHT REFERENCE SETTING WAS THE SETTING USED WHEN THE APPLICATOR WAS QUALIFIED AT THE FACTORY. ADJUSTMENT MAY BE NECESSARY WHEN RUNNING APPLICATOR IN THE FIELD.
5. UNLESS SPECIFIED OTHERWISE TORQUE VALUES SHALL BE USED PER DOCUMENT, 101-35000.

| LOC | DIST | REVISIONS |     |               |           |     |      |
|-----|------|-----------|-----|---------------|-----------|-----|------|
| A   | 66   | P         | LTN | DESCRIPTION   | DATE      | OWN | APVD |
|     |      | D         |     | ECR-17-016423 | 08NOV2017 | FZ  | KZ   |
|     |      | D1        |     | ECR-20-002398 | 19FEB2020 | MZ  | YY   |
|     |      | E         |     | ECR-21-121855 | 23NOV2021 | JWC | TE   |
|     |      | F         |     | ECR-22-155110 | 11OCT2022 | FZ  | JAH  |

|   |     |     |             |                                     |     |
|---|-----|-----|-------------|-------------------------------------|-----|
| - | 2   | 2   | 2168083-1   | SCR, SKT HD CAP, RoHS, M3 X 8.0     | 268 |
| - | 1   | 1   | 1633782-8   | FENCE                               | 267 |
| - | 1   | 1   | 1803078-2   | SPACER, PRECISION                   | 259 |
| - | 1   | 1   | 2119641-1   | FEED CAM, AIR FEED                  | 248 |
| - | 1   | 1   | 2119082-2   | CAM, SNAIL, INSULATION ADJUSTMENT   | 244 |
| - | 1   | 1   | 2079764-1   | WASHER, WAVE SPRING, CREST-TO-CREST | 243 |
| - | 1   | 1   | 2119083-1   | RETAINER, INSULATION DIAL           | 242 |
| - | 1   | 1   | 2844940-1   | AIR FEED MODULE                     | 238 |
| - | REF | REF | 994970-2    | COUNTER, MAGNETIC                   | 164 |
| - | 1   | 1   | 1-18028-2   | WASHER, FLAT, REG M4                | 119 |
| - | 1   | 1   | 2844908-1   | SCREW, LOCKING                      | 99  |
| - | 1   | 1   | 2844907-1   | POST, LOCKING                       | 98  |
| - | 1   | 1   | 1-690438-0  | FRONT STRIP GUIDE                   | 96  |
| - | 1   | 1   | 1-455888-7  | SPACER, CRIMPER                     | 82  |
| - | 1   | 1   | 1803607-3   | DOCUMENTATION PACKAGE               | 71  |
| - | 1   | 1   | 2119740-1   | TAG, IDENTIFICATION                 | 67  |
| - | 2   | 2   | 2168078-1   | SCREW, DRIVE, RH, RoHS, 2 x .188    | 66  |
| - | 1   | 1   | 2168083-2   | SCR, SKT HD CAP, RoHS, M4 X 8.0     | 60  |
| - | 1   | 1   | 5-18022-5   | SCR, HEX HD CAP, M4 X 6.0           | 59  |
| - | 1   | 1   | 1338683-8   | FEED PAWL                           | 56  |
| - | 4   | 4   | 2168083-3   | SCR, SKT HD CAP, RoHS, M4 X 12.0    | 54  |
| - | 2   | 2   | 1-2168083-0 | SCR, SKT HD CAP, RoHS, M4 X 10      | 53  |
| - | 1   | 1   | 5018030-1   | NUT, HEX, REG, RoHS, M3             | 52  |
| - | 1   | 1   | 811242-5    | BUMPER, HOLD DOWN                   | 51  |
| - | 1   | 1   | 690753-2    | SPACER, TONKER                      | 50  |
| - | 1   | 1   | 18023-9     | SCR, SKT HD CAP M4 X 6.0            | 49  |
| - | 1   | 1   | 1-1803583-7 | APPLICATOR BASIC ASSEMBLY, SF       | 46  |
| - | 1   | 1   | 1803515-2   | RAM ASSEMBLY, SF ATLANTIC           | 44  |
| - | 1   | 1   | 1803602-2   | SCR, BHSC, RoHS (M8 X 40)           | 41  |
| - | 1   | 1   | 1752356-6   | SUPPORT, TERMINAL                   | 34  |
| - | 2   | 2   | 2079383-5   | SCR, BHSC, RoHS (M4 X 20)           | 33  |
| - | 2   | 2   | 3-2844962-2 | SPACER, CYLINDRICAL, STRIP GUIDE    | 30  |
| - | 1   | 1   | 2844992-5   | ASSEMBLY, STRIP GUIDE               | 29  |
| - | 1   | 1   | 2119791-5   | DEPRESSOR, WIRE                     | 28  |
| - | 2   | 2   | 22283-1     | SPRING, COMPRESSION                 | 27  |
| - | 1   | 1   | 240792-1    | DRAG, TERMINAL                      | 25  |
| - | 1   | 1   | 1320928-2   | STRIP GUIDE                         | 24  |
| - | 1   | 1   | 2168083-2   | SCR, SKT HD CAP, RoHS, M4 X 8.0     | 21  |
| - | 1   | 1   | 1-18028-2   | WASHER, FLAT, REG M4                | 20  |
| - | 1   | 1   | 2119533-1   | STRIPPER, SIDE FEED                 | 19  |
| - | 1   | 1   | 3-22280-3   | SPRING, COMPRESSION                 | 12  |
| - | 1   | 1   | 1-356885-4  | STOP, SHEAR                         | 11  |
| - | 1   | 1   | 1-2119805-8 | SHEAR HOLDER, FRONT                 | 10  |
| - | 1   | 1   | 1-318059-0  | FLOATING SHEAR, FRONT               | 9   |
| - | 1   | 2   | 1-1633621-4 | ANVIL, COMBINATION                  | 8   |
| - | -   | -   | -           | -                                   | 7   |
| - | -   | -   | -           | -                                   | 6   |
| - | 1   | 1   | 1-1803080-0 | DEPRESSOR, SHEAR                    | 5   |
| - | 1   | 1   | 1-238011-9  | BLOCK, CRIMPER SPACER               | 4   |
| - | 1   | 2   | 5-1803016-3 | CRIMPER, INSULATION F               | 3   |
| - | 1   | 1   | 455888-4    | SPACER, CRIMPER                     | 2   |
| - | 1   | 2   | 456411-3    | CRIMPER, WIRE PREMIUM               | 1   |

ATLANTIC VERSION  
Shown on sheets 1 of 4 & 2 of 4  
(Pacific version shown on sheets 3 of 4 & 4 of 4)

| DIMENSIONS: |         | TOLERANCES UNLESS OTHERWISE SPECIFIED: |         | MATERIAL: |         | FINISH:  |          |
|-------------|---------|--|---------|-----------|---------|----------|----------|
| mm          | 0 PLC ± | 1 PLC ±                                | 2 PLC ± | 3 PLC ±   | 4 PLC ± | ANGLES ± | FINISH ± |
| MATERIAL    |         | FINISH                                 |         | WEIGHT    |         | SCALE    |          |
| -           |         | -                                      |         | -         |         | 1:2      |          |

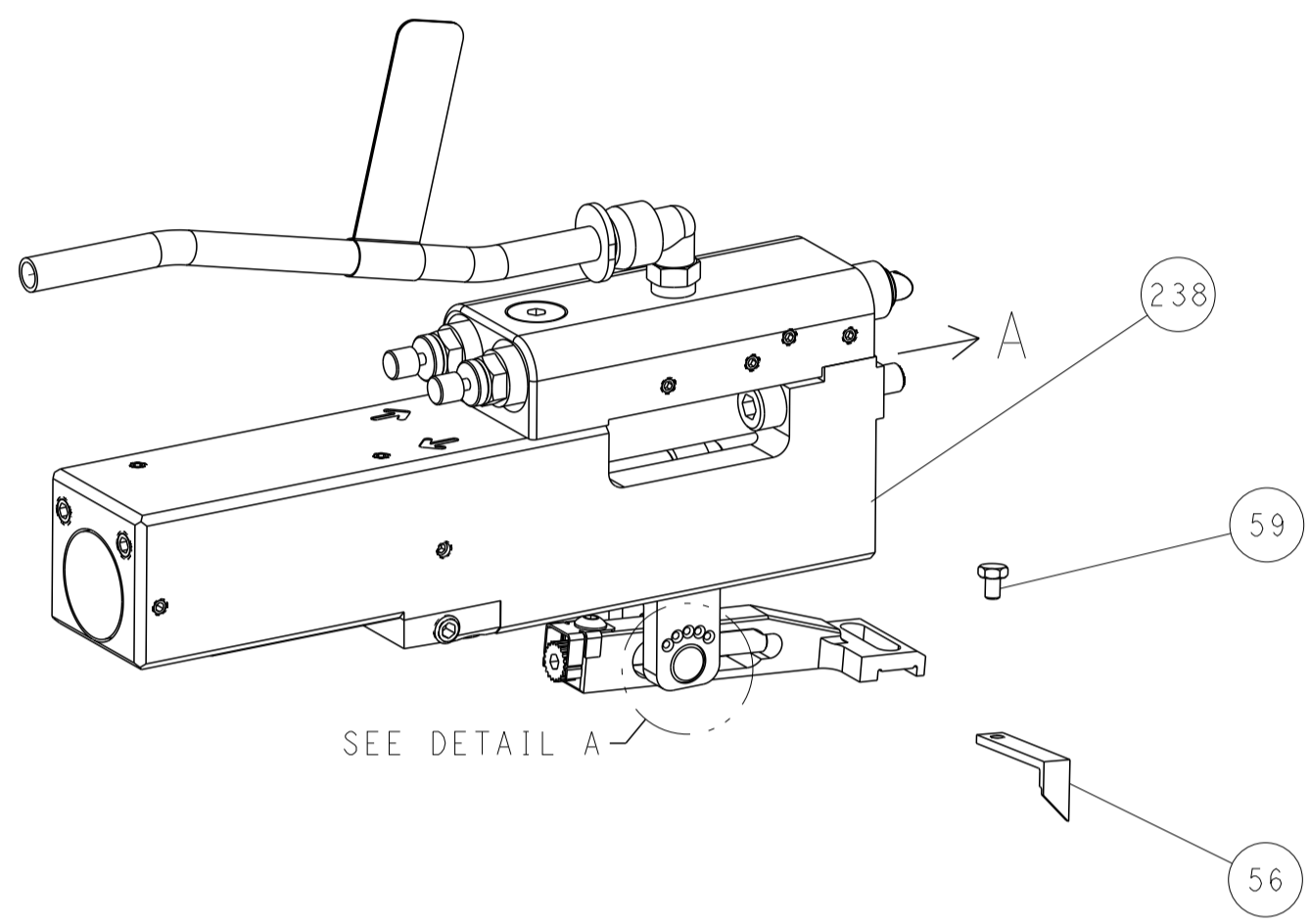
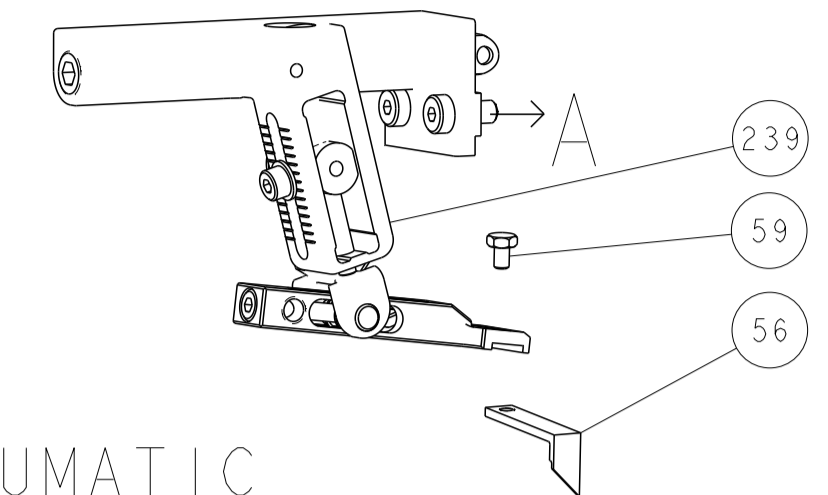
| ITEM NO  | PART NO | DESCRIPTION |
|----------|---------|-------------|
| -77-72-2 |         |             |

|  |                            |            |
|--|----------------------------|------------|
| OWN                                    | Y. YIN                     | 27FEB2015  |
| CHK                                    | G. BAILEY                  | 27FEB2015  |
| APVD                                   | J. GUO                     | 27FEB2015  |
| NAME                                   | Ocean Side Feed Applicator |            |
| SIZE                                   | CAGE CODE                  | DRAWING NO |
| A1                                     | 00779                      | 2151410    |
| Customer Accessible Production Drawing |                            |            |

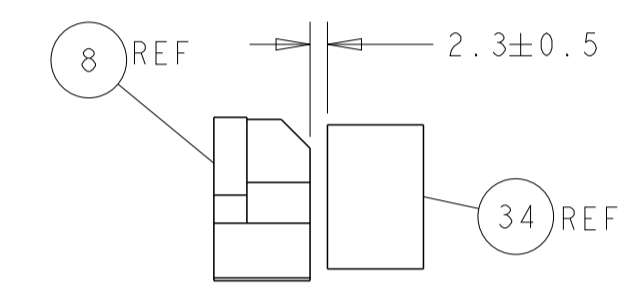
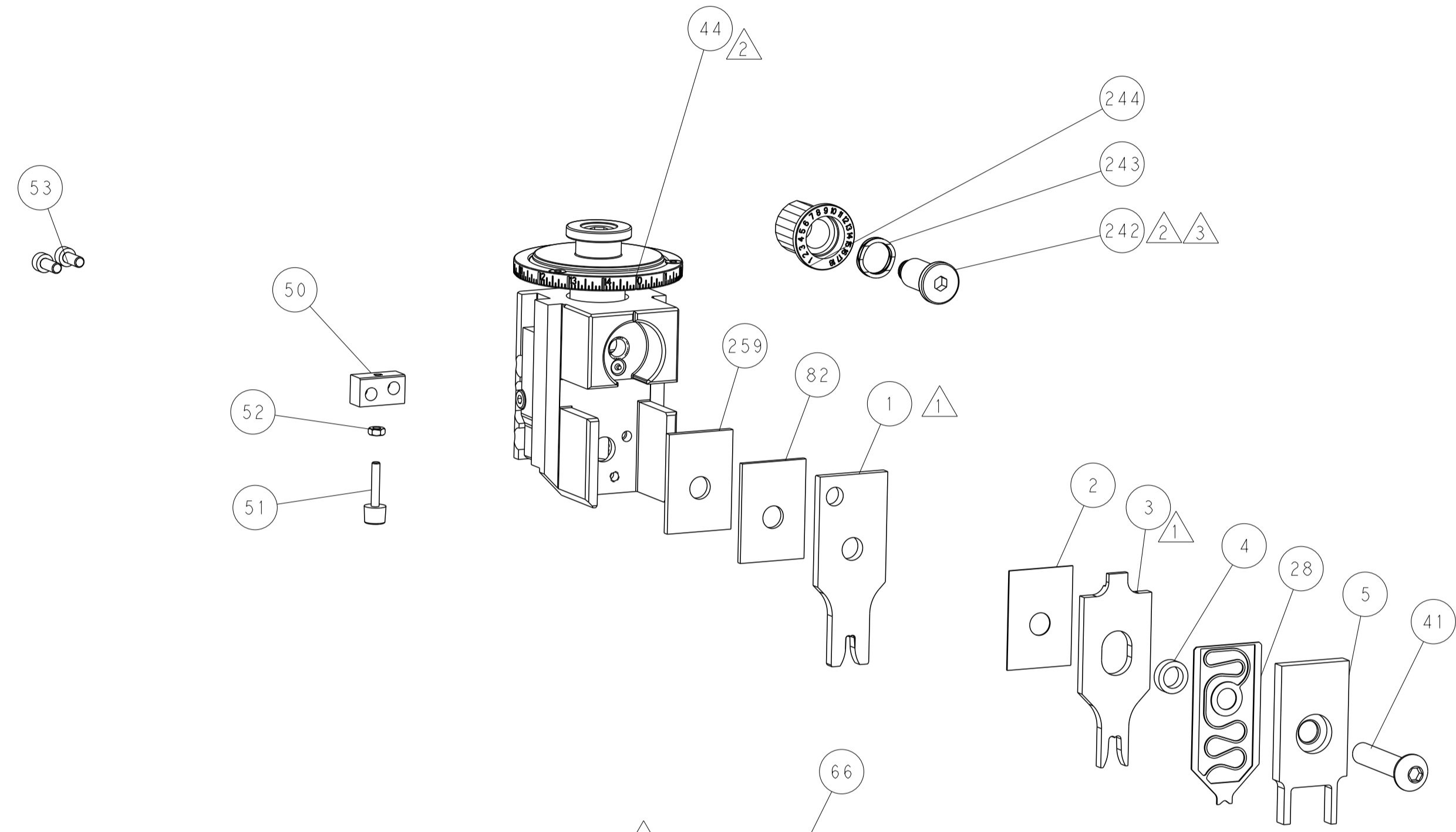
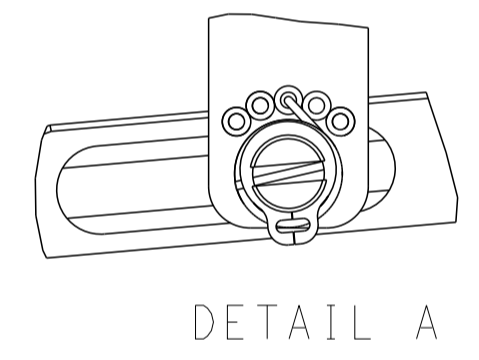
Customer Accessible Production Drawing SCALE 1:2 SHEET 1 OF 4 REV F

| LOC | DIST | REVISIONS |     |             |      |     |      |
|-----|------|-----------|-----|-------------|------|-----|------|
| A   | 66   | P         | LTN | DESCRIPTION | DATE | DWN | APVD |
|     |      | -         |     | SEE SHEET 1 | -    | -   | -    |

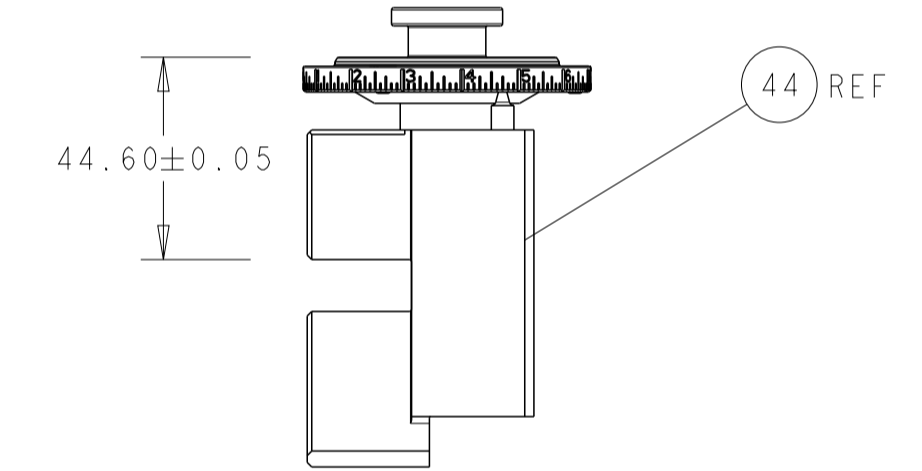
# FEED TYPE MECHANICAL



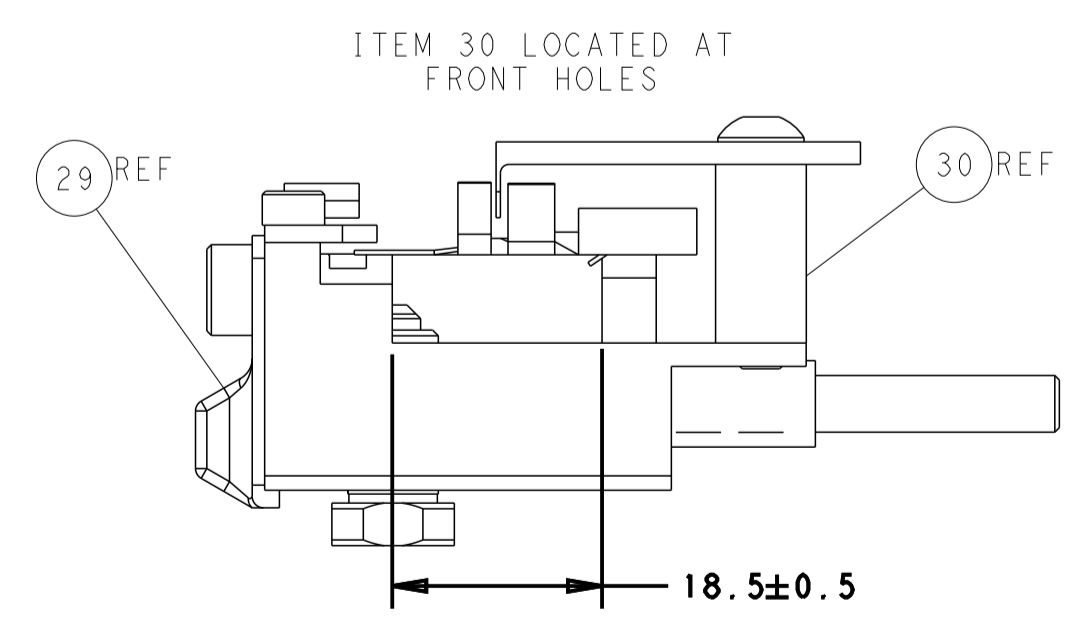
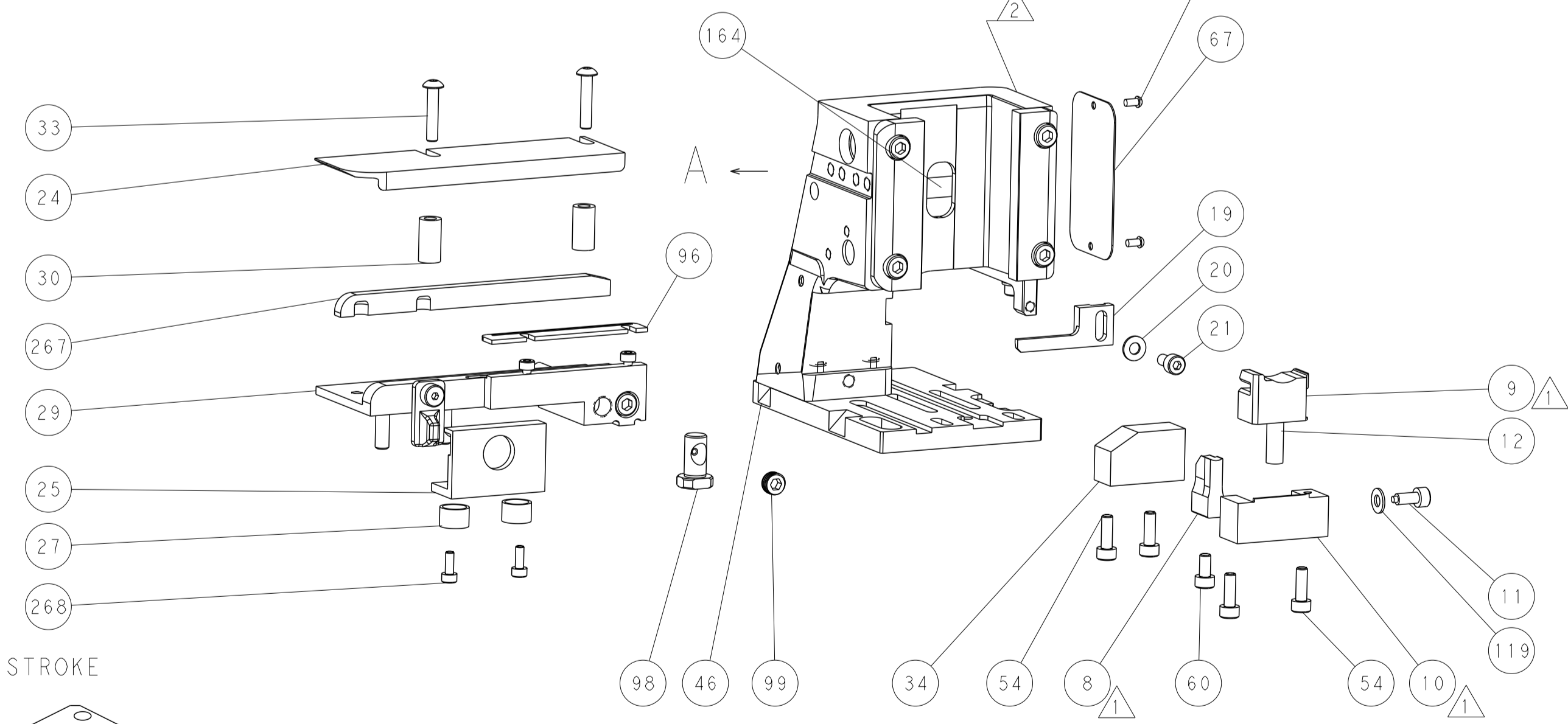
FEED SPRING SETTING POSITION (SHOWN FROM REAR SIDE)



TERMINAL SUPPORT LOCATION

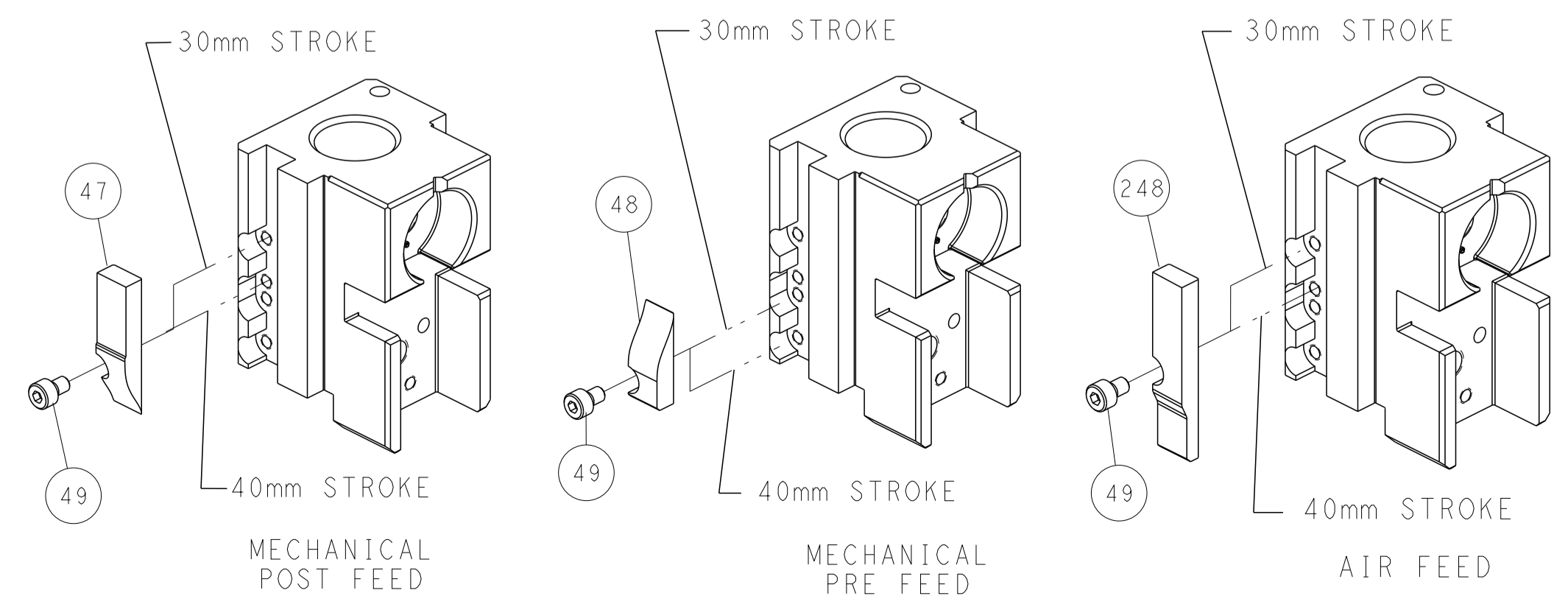


RAM SET-UP



FEED TRACK POSITION GUIDE BY INSULATION BARREL

# CAM POSITIONS



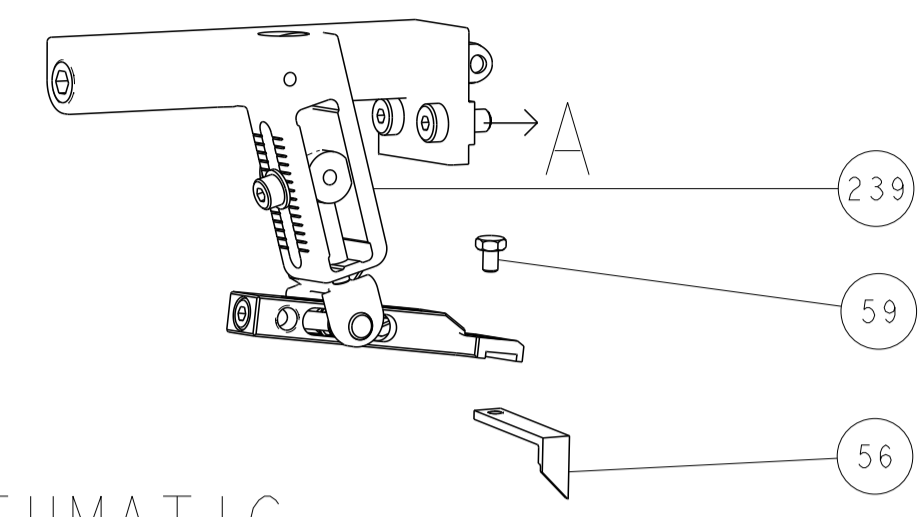
**ATLANTIC VERSION**  
 Shown on sheets 1 of 4 & 2 of 4  
 (Pacific version shown on sheets 3 of 4 & 4 of 4)

|   |  |  |   |
|---|--|--|---|
| DIMENSIONS: mm<br>TOLERANCES UNLESS OTHERWISE SPECIFIED:<br>0 PLC ±<br>1 PLC ±<br>2 PLC ±<br>3 PLC ±<br>4 PLC ±<br>ANGLES ±<br>FINISH ± |  | DWN Y. YIN 27FEB2015<br>CHK G. BAILEY 27FEB2015<br>APVD J. GUO 27FEB2015<br>PRODUCT SPEC<br>APPLICATION SPEC<br>WEIGHT<br>Customer Accessible Production Drawing | NAME Ocean Side Feed Applicator<br>SIZE CAGE CODE DRAWING NO. RESTRICTED TO<br>A1 00779 C=2151410<br>SCALE 1:2 SHEET 2 OF 4 REV F |
|---|--|--|---|

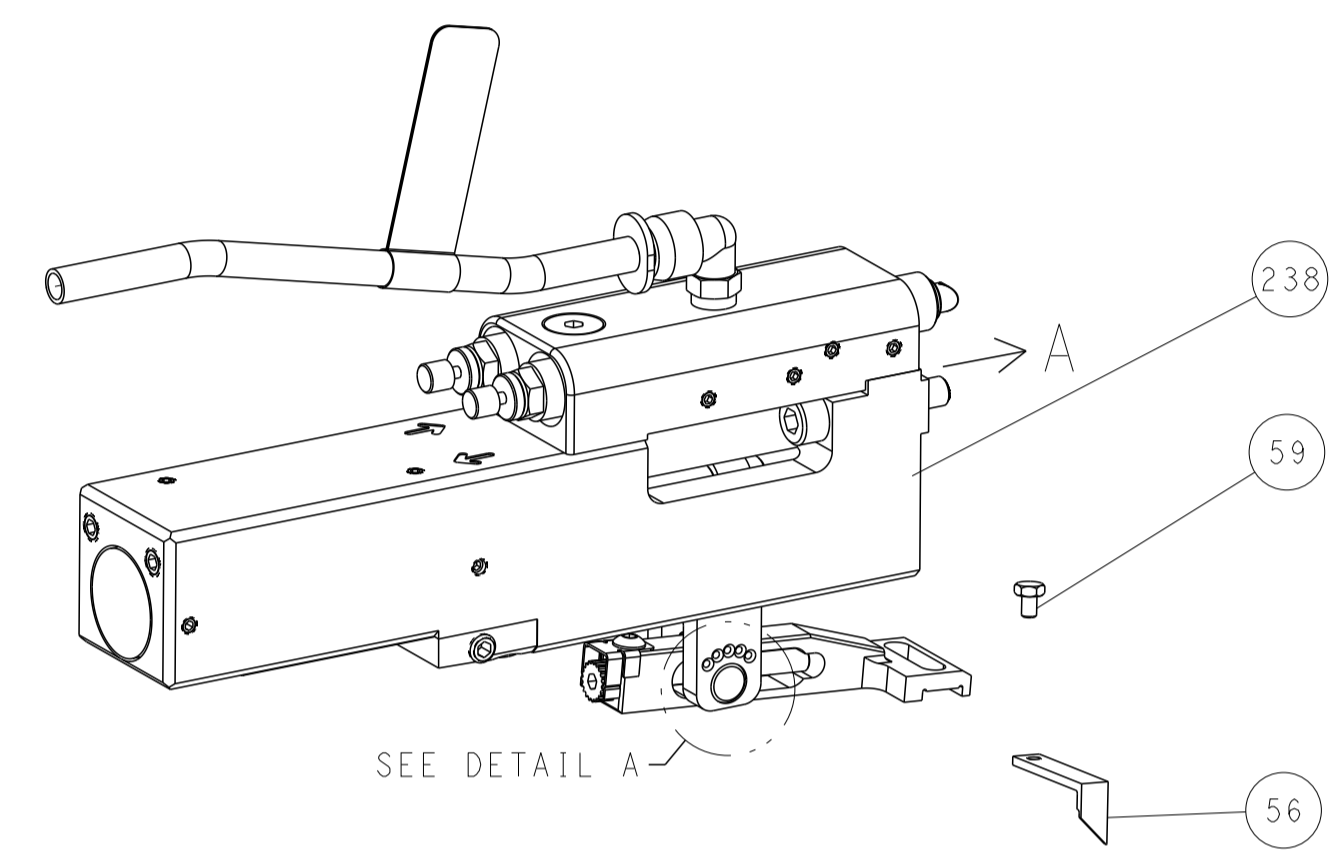


| LOC | DIST | REVISIONS |     |             |      |     |      |
|-----|------|-----------|-----|-------------|------|-----|------|
| A   | 66   | P         | LTN | DESCRIPTION | DATE | DMN | APVD |
|     |      | -         |     | SEE SHEET 1 | -    | -   | -    |

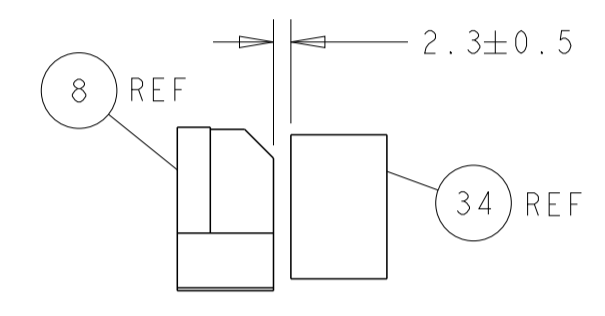
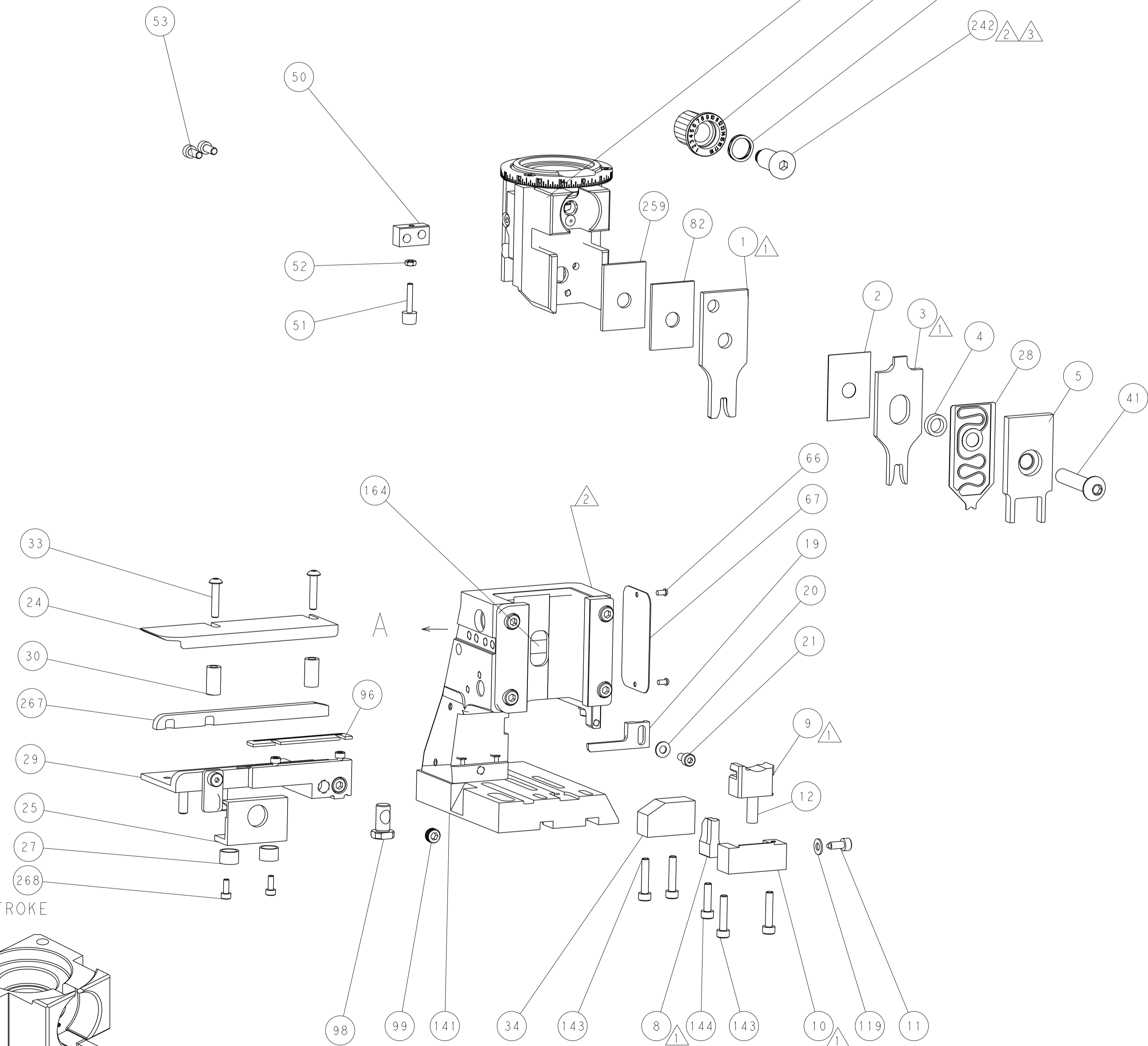
# FEED TYPE MECHANICAL



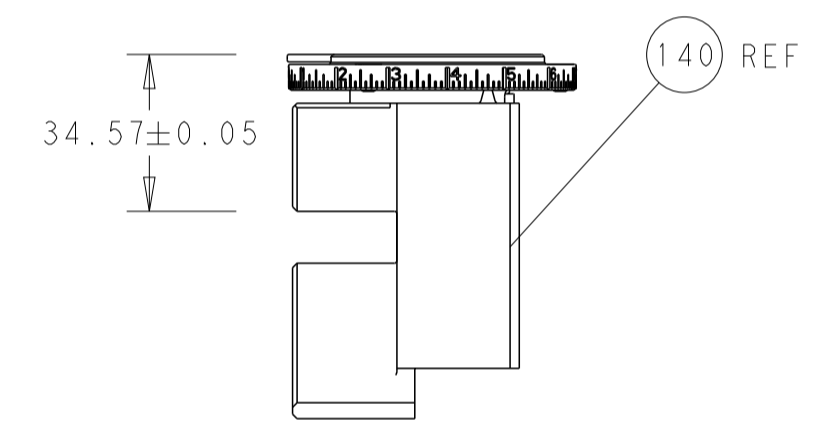
## PNEUMATIC



## FEED SPRING SETTING POSITION (SHOWN FROM REAR SIDE)

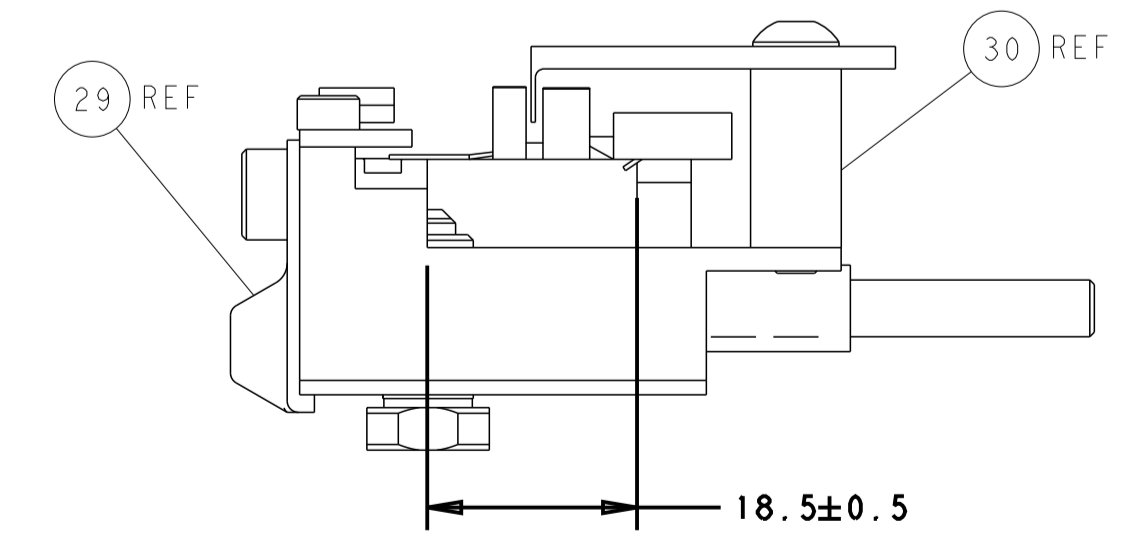


TERMINAL SUPPORT LOCATION



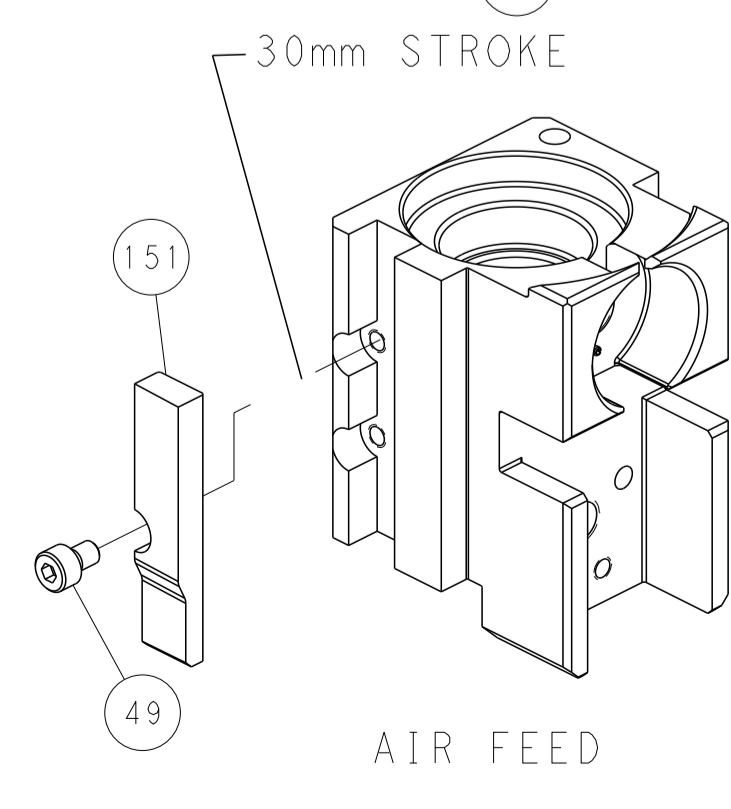
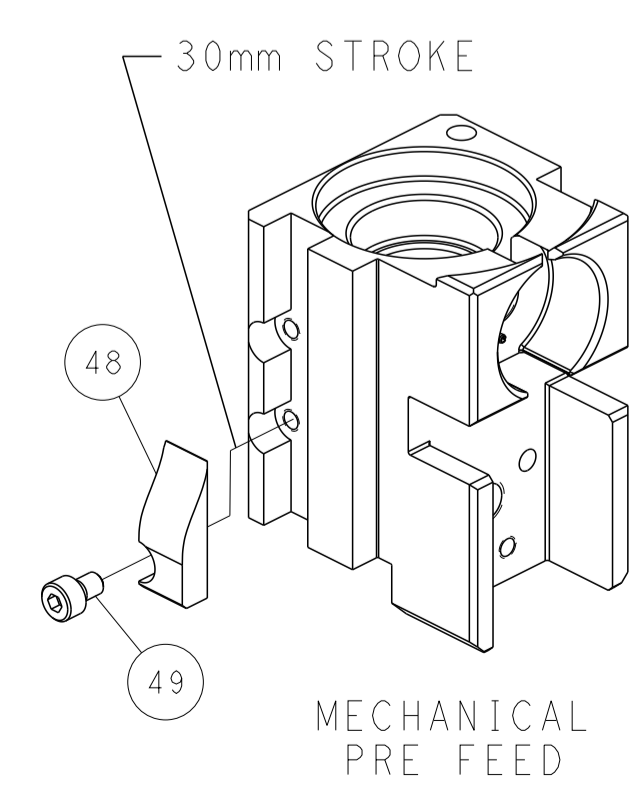
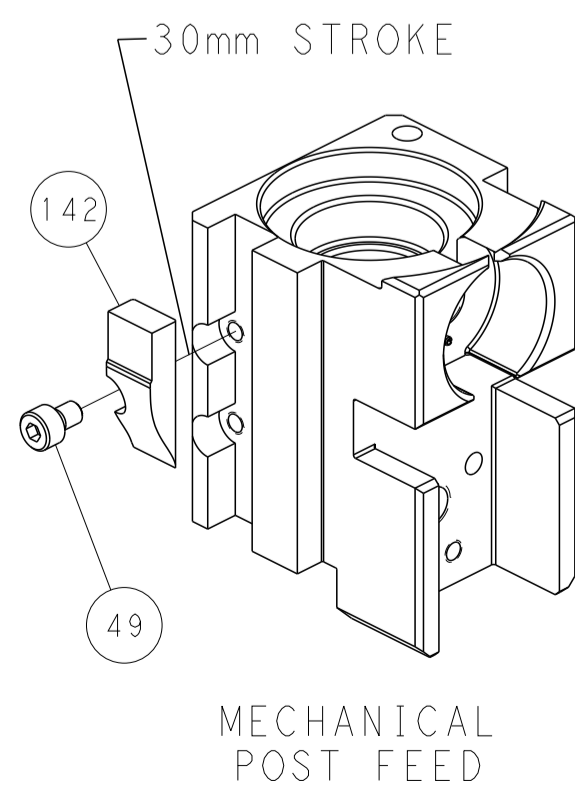
RAM SET-UP

ITEM 30 LOCATED AT FRONT HOLES



FEED TRACK POSITION GUIDE BY INSULATION BARREL

# CAM POSITIONS



**PACIFIC VERSION**  
 Shown on sheets 3 of 4 & 4 of 4  
 (Atlantic version shown on sheets 1 of 4 & 2 of 4)

|             |         |  |         |                         |                  |  |                              |
|-------------|---------|--|---------|-------------------------|------------------|--|------------------------------|
| DIMENSIONS: |         | TOLERANCES UNLESS OTHERWISE SPECIFIED: |         | DWG Y. YIN 27FEB2015    |                  | TE Connectivity                        |                              |
| mm          | 0 PLC ± | 1 PLC ±                                | 2 PLC ± | 3 PLC ±                 | 4 PLC ±          | 5 PLC ±                                | Harrisburg, PA 17105-3608    |
|             | ANGLES  | FINISH                                 |         | CHK G. BAILEY 27FEB2015 | NAME             | Ocean Side Feed Applicator             |                              |
| MATERIAL    |         |  |         | APVD JJ. GUO 27FEB2015  | PRODUCT SPEC     | SIZE                                   | CAGE CODE DRAWING NO         |
|             |         |  |         |                         | APPLICATION SPEC | A1                                     | 00779 C=2151410              |
|             |         |  |         |                         | WEIGHT           | Customer Accessible Production Drawing | SCALE 1:2 SHEET 4 OF 4 REV F |