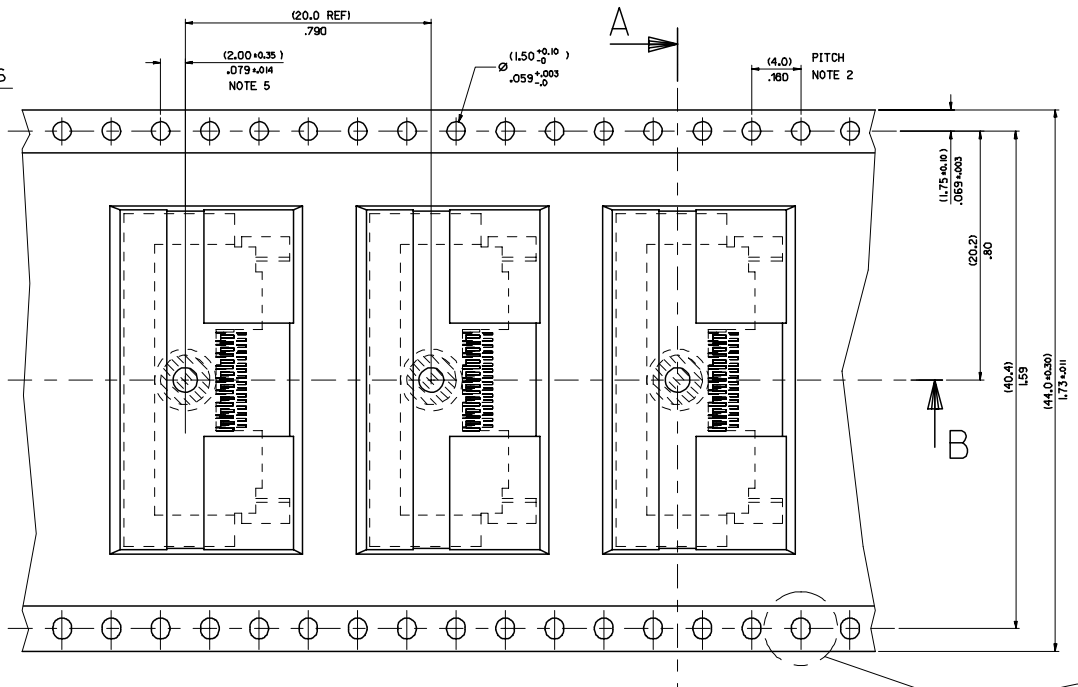
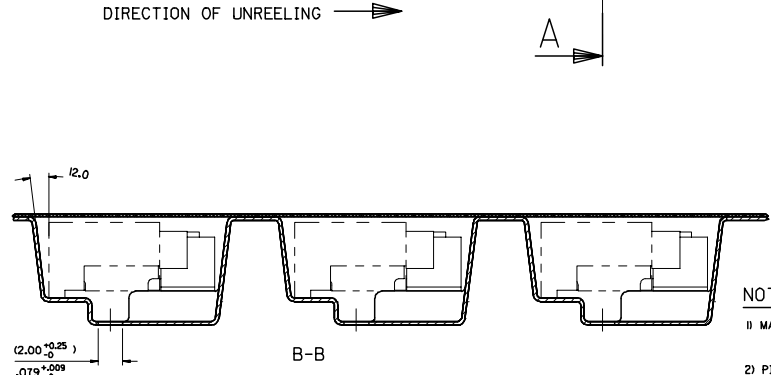
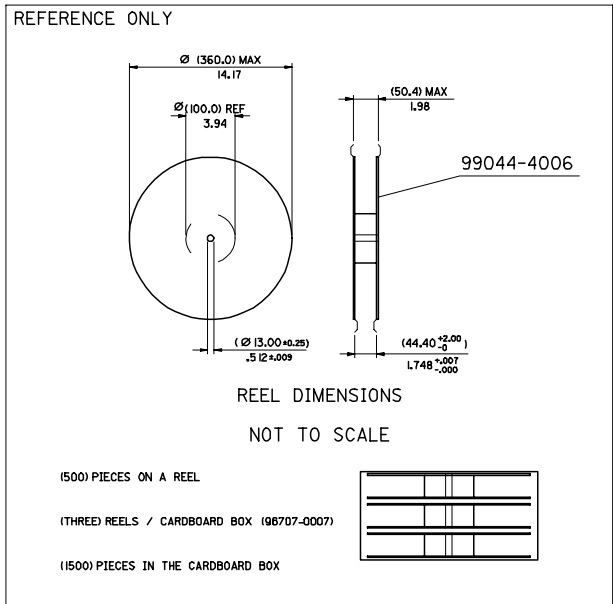


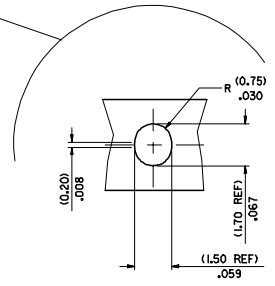
Scale 2:1



DIRECTION OF UNREELING →



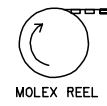
TO CUSTOMER ASSEMBLY MACHINE →



Scale 10:1

NOTES:

- 1) MATERIAL :  
CARRIER TAPE : VOLUME CONDUCTIVE POLYCARBONATE , (0.37) .014 REF THICK , BLACK  
COVER TAPE : COLD SEAL POLYESTER , (0.06) .002 REF THICK , TRANSPARENT
- 2) PITCH TOLERANCE OVER ANY 10 PITCHES ±(0.2) .008
- 3) PEEL FORCE OF THE COVER TAPE IS 0.1N TO 1.0N  
AT A MAXIMUM PEEL SPEED OF (300) 11.8mm/min ±10%
- 4) REFERENCE TO IEC 286-3 EXCEPT WHERE SPECIFIED



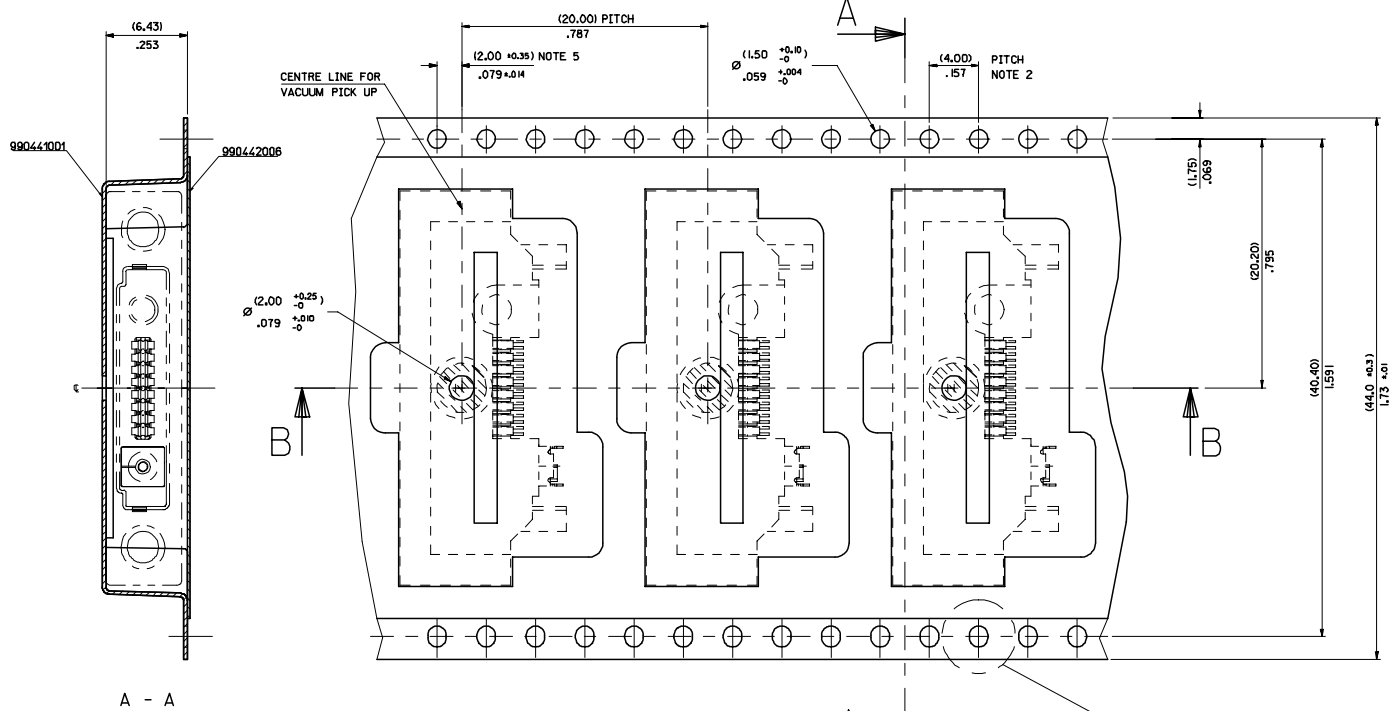
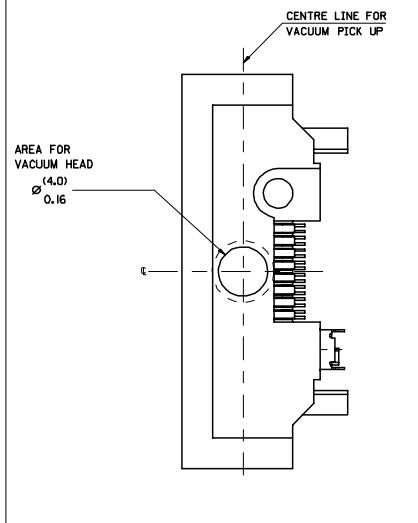
MOLEX REEL

COMPONENT	DESCRIPTION
90811-2001	MOBILE PHONE I/O CONNECTOR

QUALITY SYMBOLS	GENERAL TOLERANCES (UNLESS SPECIFIED)		DIMENSION STYLE		SCALE	DESIGN UNITS	THIRD ANGLE PROJECTION
	mm	INCH	MM/IN	MM/IN	S:1	METRIC	
▽=0 ▽=0	4 PLACES ±	±	DRAWN BY	DATE	1996/05/10	M	BLISTER PACKAGING FOR MOBILE PHONE HANDSET
	3 PLACES ±	±	CHECKED BY	DATE			
	2 PLACES ±	±	APPROVED BY	DATE			
	1 PLACE ±	±	MW	1996/05/10			
ANGULAR ± .5°			MATERIAL NO.		DOCUMENT NO.		SHEET NO.
DRAFT WHERE APPLICABLE MUST REMAIN WITHIN DIMENSIONS			SEE CHART		SDA-90811-9001		1 OF 3

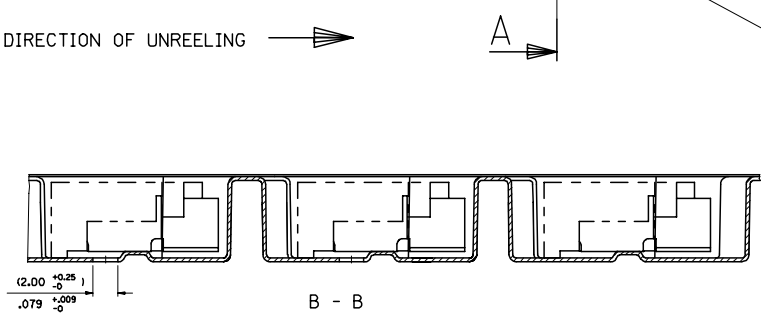
THIS DRAWING CONTAINS INFORMATION THAT IS PROPRIETARY TO MOLEX INCORPORATED AND SHOULD NOT BE USED WITHOUT WRITTEN PERMISSION

COMPONENT PICK UP DETAIL

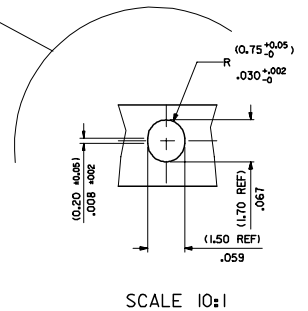


A - A

DIRECTION OF UNREELING →

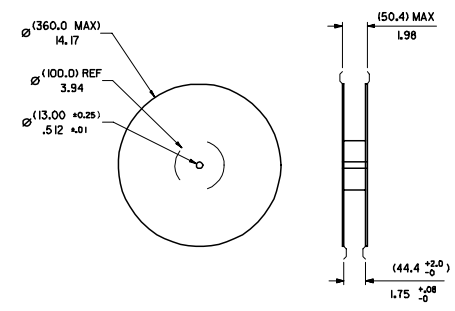


B - B



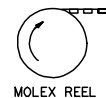
SCALE 10:1

REFERENCE ONLY



REEL DIMENSIONS  
DO NOT SCALE

(600) PIECES / REEL (SUBJECT TO CHANGE)  
(THREE) REELS / CARDBOARD BOX (96707-0007)  
(1800) PIECES / CARDBOARD BOX (SUBJECT TO CHANGE)



COMPONENT	DESCRIPTION
90811-0003	MOBILE PHONE I/O CONNECTOR
90811-0005	MOBILE PHONE I/O CONNECTOR
90811-2103	MOBILE PHONE I/O CONNECTOR

NOTES:

- 1) MATERIAL :  
CARRIER TAPE : VOLUME CONDUCTIVE POLYCARBONATE, (0.37) / .015 REF THICK, BLACK  
COVER TAPE : COLD SEAL POLYESTER, (0.06) / .002 REF THICK, TRANSPARENT
- 2) PITCH TOLERANCE OVER ANY 10 PITCHES ±(0.2) / .008
- 3) PEEL FORCE OF THE COVER TAPE IS 0.1N TO 1.0N  
AT A MAXIMUM PEEL SPEED OF (300) 11.8 mm/min ±10%
- 4) REFERENCE TO IEC 286-3 EXCEPT WHERE NOTED

TO CUSTOMER ASSEMBLY MACHINE →

UPDATE FRAME ELC NG E2007-0458 2007/05/01 DRW NG DUGGAN 2007/05/15 CHK CD 2007/05/16 APPR EFOLAN	QUALITY SYMBOLS ▽=0 ▽=0	GENERAL TOLERANCES (UNLESS SPECIFIED)		DIMENSION STYLE MM/IN		SCALE 5:1	DESIGN UNITS METRIC	THIRD ANGLE PROJECTION
		4 PLACES ± 3 PLACES ± 2 PLACES ± 0.10 1 PLACE ± 0.2	mm INCH ± --- ± --- ± --- ± --- ± --- ± ---	DRAWN BY MK 1997/01/15	DATE 1997/01/15	CHECKED BY MW 1997/01/15	DATE 1997/01/15	TITLE BLISTER PACKAGING FOR MOBILE PHONE HANDSET
DRAFT WHERE APPLICABLE MUST REMAIN WITHIN DIMENSIONS		ANGLULAR ± .5 °		APPROVED BY MW 1997/01/15		MATERIAL NO. SEE CHART	DOCUMENT NO. SDA-90811-9001	SHEET NO. 2 OF 3

MOLEX MOLEX INCORPORATED

THIS DRAWING CONTAINS INFORMATION THAT IS PROPRIETARY TO MOLEX INCORPORATED AND SHOULD NOT BE USED WITHOUT WRITTEN PERMISSION