



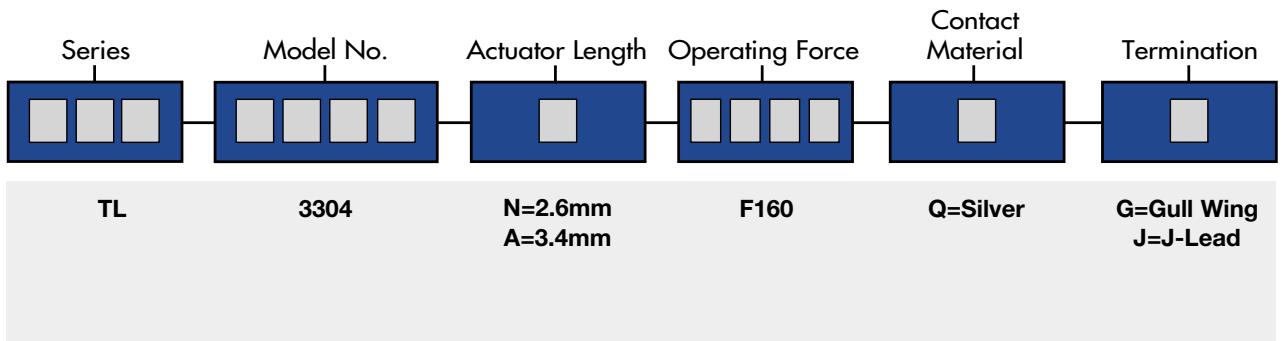
SPECIFICATIONS

Rating:	50mA @ 50 VDC
Mechanical Life:	100,000 cycles typical
Contact Resistance:	20mΩ max. initial @ 2-4 VDC, 100mA
Insulation Resistance:	100MΩ min.
Dielectric Strength:	1,000 Vrms at sea level
Operating Force:	160 ± 50 gf

MATERIALS

Housing:	Polyphenylene Sulfide (PPS)
Actuator:	Rubber
Cover:	Stainless steel
Contacts:	Silver-clad phosphor bronze
Terminals:	Silver-clad brass

HOW TO ORDER



EXAMPLE



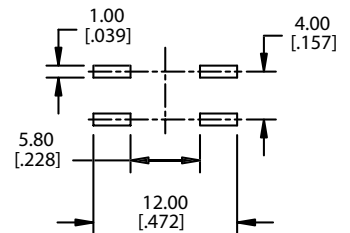
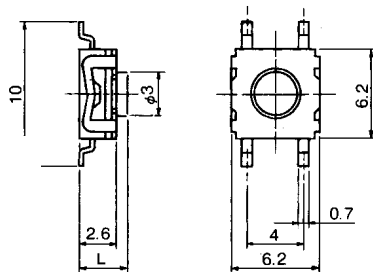
SPECIFICATIONS SUBJECT TO CHANGE WITHOUT NOTICE.

Gull Wing Termination

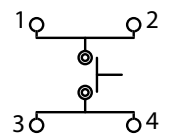
P.C. MOUNTING



TL 3304N
Gull Wing



Schematic

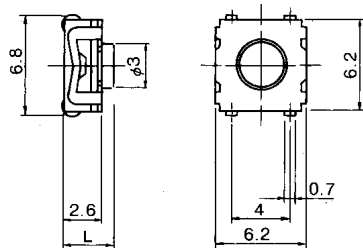


SURFACE MOUNT TACT SWITCHES

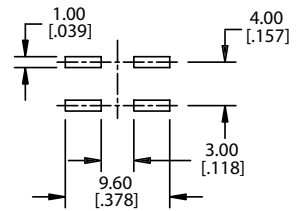


TL 3304A
J-Lead

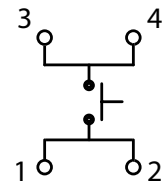
J-Lead Termination



P.C. MOUNTING



Schematic



ACTUATOR OPTIONS

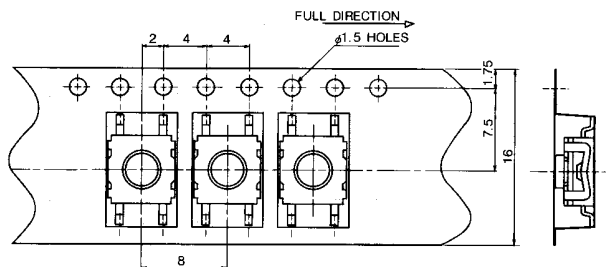
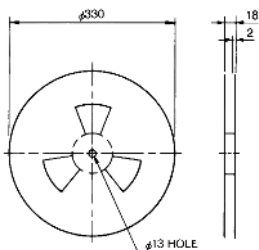
Actuator Length (L)
N = 2.6 mm
A = 3.4 mm

TERMINATION

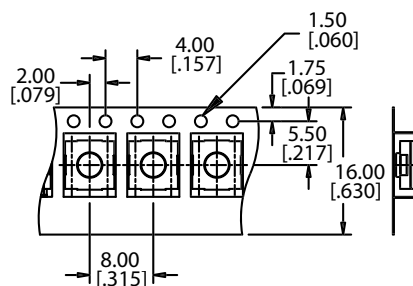
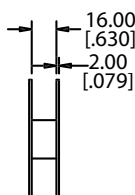
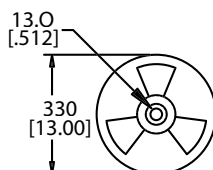
Termination
G = Gull Lead
J = J-Lead

STANDARD REELS

Gull Wing



J-Lead



SPECIFICATIONS SUBJECT TO CHANGE WITHOUT NOTICE.