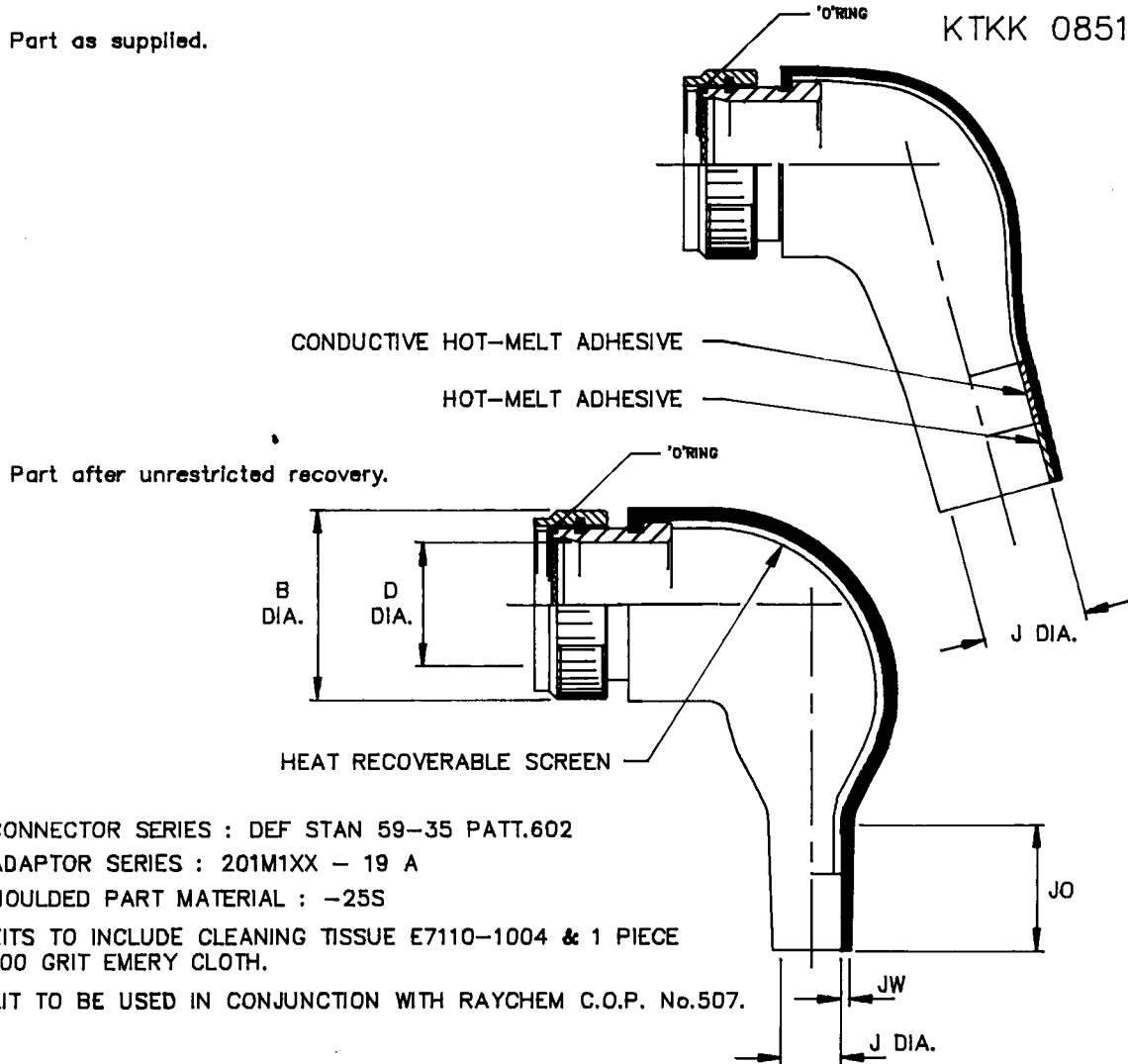


Part as supplied.

KTKK 0851 - 0859



CONNECTOR SERIES : DEF STAN 59-35 PATT.602
 ADAPTOR SERIES : 201M1XX - 19 A
 MOULDED PART MATERIAL : -25S
 KITS TO INCLUDE CLEANING TISSUE E7110-1004 & 1 PIECE
 100 GRIT EMERY CLOTH.
 KIT TO BE USED IN CONJUNCTION WITH RAYCHEM C.O.P. No.507.

DIMENSIONS (in millimetres)

PART No.	SHELL SIZE	B DIA. max.	D DIA. min.	J		JO ref. b	JW ±30% b
				min. a	max. b		
KTKK 0851	10	18,7	8,7	9	5,0	15	1,0
KTKK 0852	12	21,8	12,4	13	6,0	17	1,0
KTKK 0853	14	25,0	14,0	16	7,2	18	1,0
KTKK 0854	16	28,3	17,2	16	7,2	18	1,0
KTKK 0855	18	31,0	19,2	20	8,5	20	1,0
KTKK 0856	20	34,2	22,4	20	8,5	20	1,0
KTKK 0857	22	37,3	25,6	24	10,0	28	1,5
KTKK 0858	24	40,5	28,8	30	15,8	31	1,5
KTKK 0859	16	28,3	17,2	18	8,5	20	1,0

Drawn G.E. Checked *sh* Issue 1 Date MAY 1987

Approval

Design

[Signature]

MKTG
R.W. Evans

Q.C. *[Signature]*

Conforms to ISO Recommendations
3rd Angle Projection
Not to scale

