

DO NOT SCALE FROM THIS PRINT

SEAC-XXX-XX-XX.X-TU-XX-2-X

POSITIONS (SEE NOTE 10)
-020, -030**, -040***, -050****

ROWS
-04, -06, -08, -10

CABLE LENGTH
-XX.X (INCHES)
(04.0[101.6] MIN)
(SEE NOTE 6)

END ONE
-TU

LATCH STYLE
-N: NO SIDE LATCHES (SEE FIG 3, SHT 4)
-BLANK: LEAVE BLANK FOR SIDE LATCHES (SEE FIG 1)

CABLE TYPE
-2: 32100 DISCRETE TWINAX

END TWO
-TU
-TD

** AVAILABLE IN -04, -06, -08 ROWS ONLY
*** AVAILABLE IN -04, -06 ROWS ONLY
**** AVAILABLE IN -04 ROWS ONLY

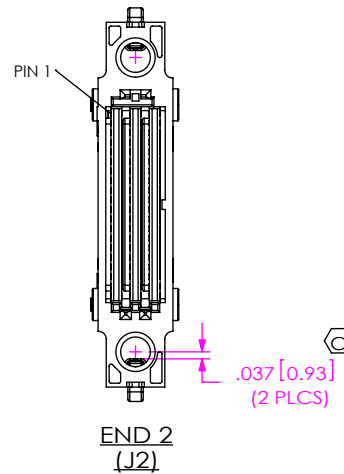
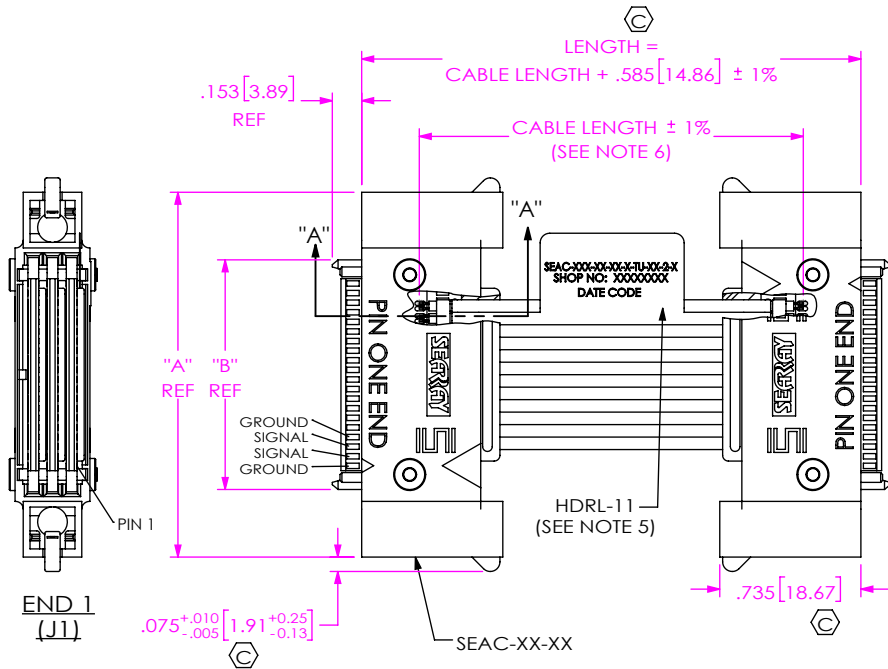
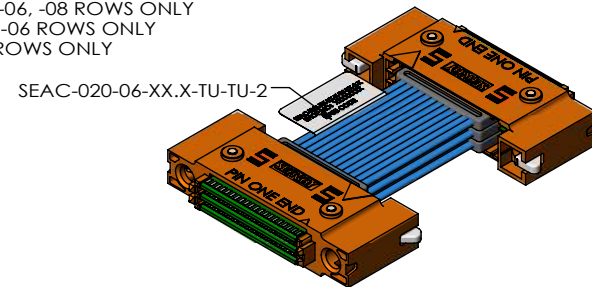


TABLE 1

POS	"A"	"B"
-020	1.900 [48.26]	1.196 [30.38]
-030	2.400 [60.96]	1.696 [43.08]
-040	2.900 [73.66]	2.196 [55.78]
-050	3.400 [86.36]	2.696 [68.48]

TABLE 2

POS	"C"	"D"	# SUBS
-04	0.350 [8.89]	0.152 [3.86]	2
-06	0.450 [11.43]	0.252 [6.40]	3
-08	0.550 [13.97]	0.352 [8.94]	4
-10	0.650 [16.51]	0.452 [11.48]	5

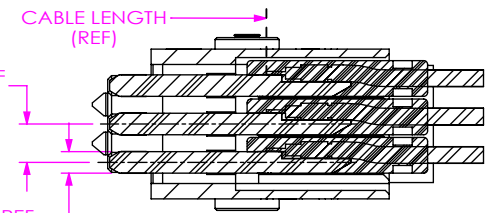
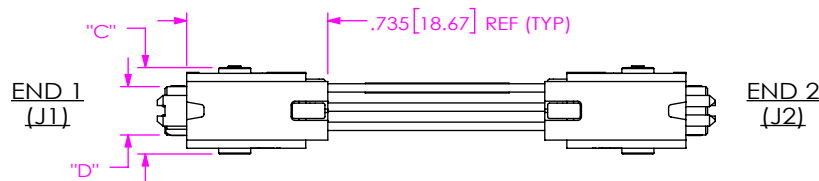
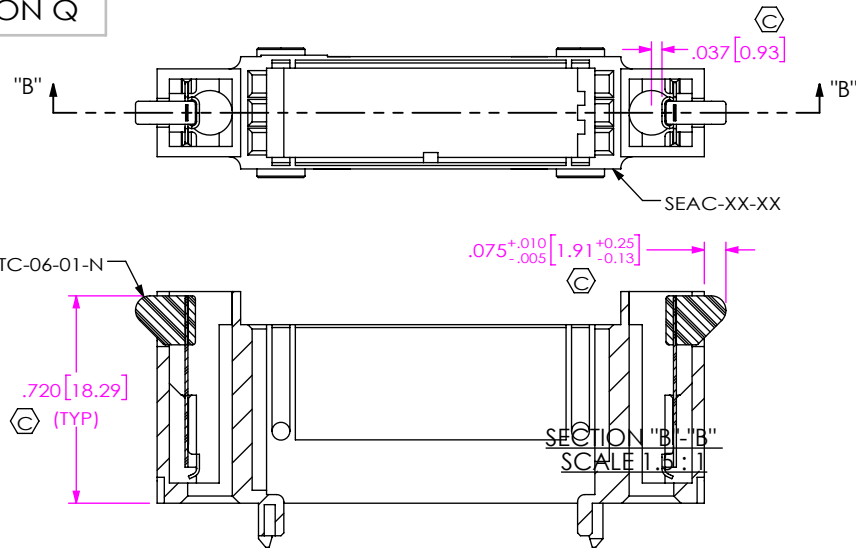


FIG 1 (SEAC-020-06-XX.X-TU-TU-2 SHOWN)

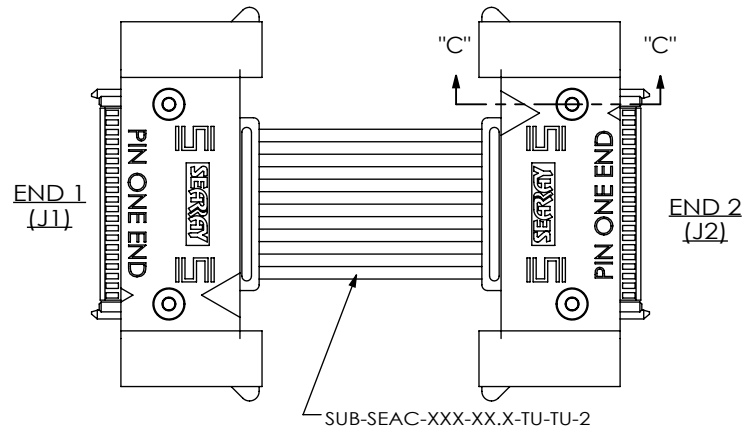
- NOTES:
1. Ⓢ REPRESENTS A CRITICAL DIMENSION.
 2. ALL ASSEMBLIES TO BE 100% ELECTRICALLY TESTED.
 3. ALL ASSEMBLIES TO BE 100% HI-POT TESTED AT 300V.
 4. PACKAGE ASSEMBLIES IN ANTI-STATIC OR STATIC DISSIPATIVE BAGS.
 5. LABEL TO BE CENTERED ON CABLE ASSY AS SHOWN. LABEL TO CONTAIN: PART NUMBER, SHOP ORDER & DATE CODE.
 6. CABLE LENGTH GREATER THAN 40.0"[1016mm] IS A VALID PART NUMBER, BUT IS NOT SUPPORTED BY S.I. TEST DATA.
 7. LATCH MINIMUM RETENTION TO BE 4.45 N (1.0lb)
 8. NOTE DELETED.
 9. REFERENCE DRAWING "SEAC-PINOUT.PDF" FOR ALL SIGNAL MAPPING CONFIGURATIONS.
 10. FOR PIN COUNTS 300 AND HIGHER PLEASE CONTACT SAMTEC.
 11. SEE SUB-SEAC-XXX-XX.X-TU-XX-X FOR CABLE PREP DIMENSIONS.
 12. REFER TO PREP-SPEC DOCUMENT FOR CABLE PREP DIMENSIONS. ASSEMBLY USES STEPPED PCB PREP.

F:\DWG\MISC\MKTG\SEAC-XXX-XX-XX.X-TU-XX-2-X-MKT.SLDDRW

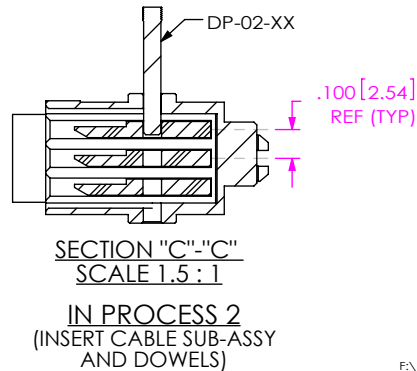
UNLESS OTHERWISE SPECIFIED, DIMENSIONS ARE IN INCHES. TOLERANCES ARE: DECIMALS ANGLES .XX: ±.01[.3] 2° .XXX: ±.005[.13] .XXXX: ±.002[.051]	PROPRIETARY NOTE THIS DOCUMENT CONTAINS CONFIDENTIAL AND PROPRIETARY INFORMATION AND ALL DESIGN, MANUFACTURING, REPRODUCTION, USE, PATENT RIGHTS AND SALES RIGHTS ARE EXPRESSLY RESERVED BY SAMTEC, INC. THIS DOCUMENT SHALL NOT BE DISCLOSED, IN WHOLE OR PART, TO ANY UNAUTHORIZED PERSON OR ENTITY NOR REPRODUCED, TRANSFERRED OR INCORPORATED IN ANY OTHER PRODUCT IN ANY MANNER WITHOUT THE EXPRESS WRITTEN CONSENT OF SAMTEC, INC.	samtec 520 PARK EAST BLVD, NEW ALBANY, IN 47150 PHONE: 812-944-6733 FAX: 812-948-5047 e-Mail info@SAMTEC.com code 55322
MATERIAL: DO NOT SCALE DRAWING SHEET SCALE: 1:1	DESCRIPTION: CABLE ASSEMBLY, SEAC SYSTEM	DWG. NO. SEAC-XXX-XX-XX.X-TU-XX-2-X
SEAC-XX-XX: LCP, UL 94 V0, COLOR: BLACK SUB-IM-LTC-06-01-N: NYLON/BeCu SUB-SEAC-XXX-XX.X-TU-TU: FR4/COPPER/PVC/TEFLON/MACROMELT OM646 DP-01-XX: STAINLESS STEEL HDRL-02: POLYESTER	BY: ANDREW C 08/06/2013	SHEET 1 OF 4



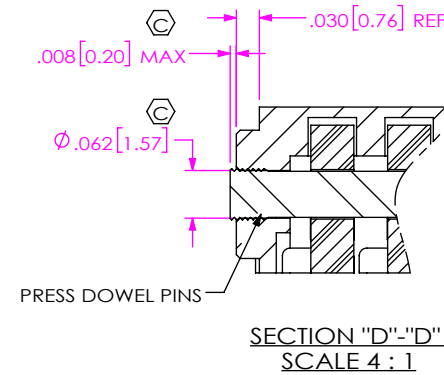
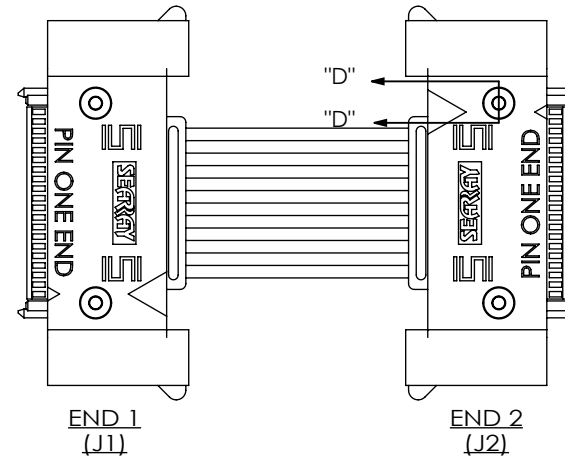
IN PROCESS 1
(INSERT SIDE LATCHES)
(FOR -BLANK LATCH STYLE)



IN PROCESS 3
(PRESS DOWEL PINS)



IN PROCESS 2
(INSERT CABLE SUB-ASSY
AND DOWELS)



<p>DO NOT SCALE DRAWING</p> <p>SHEET SCALE: 1:1</p>	<p>PROPRIETARY NOTE</p> <p>THIS DOCUMENT CONTAINS CONFIDENTIAL AND PROPRIETARY INFORMATION AND ALL DESIGN, MANUFACTURING, REPRODUCTION, USE, PATENT RIGHTS AND SALES RIGHTS ARE EXPRESSLY RESERVED BY SAMTEC, INC. THIS DOCUMENT SHALL NOT BE DISCLOSED, IN WHOLE OR PART, TO ANY UNAUTHORIZED PERSON OR ENTITY NOR REPRODUCED, TRANSFERRED OR INCORPORATED IN ANY OTHER PROJECT IN ANY MANNER WITHOUT THE EXPRESS WRITTEN CONSENT OF SAMTEC, INC.</p>	<p>samtec</p> <p>520 PARK EAST BLVD, NEW ALBANY, IN 47150 PHONE: 812-944-6733 FAX: 812-948-5047 e-Mail info@SAMTEC.com code 55322</p>
	<p>DESCRIPTION: CABLE ASSEMBLY, SEAC SYSTEM</p> <p>DWG. NO. SEAC-XXX-XX-XX.X-TU-XX-2-X</p> <p>BY:ANDREW C 08/06/2013 SHEET 2 OF 4</p>	

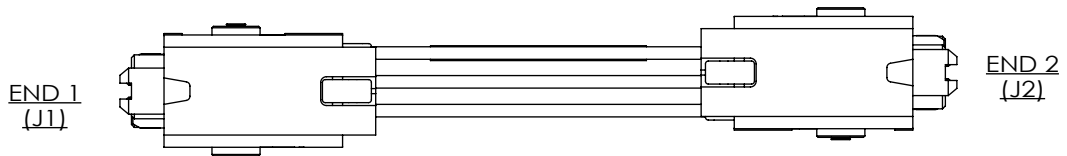
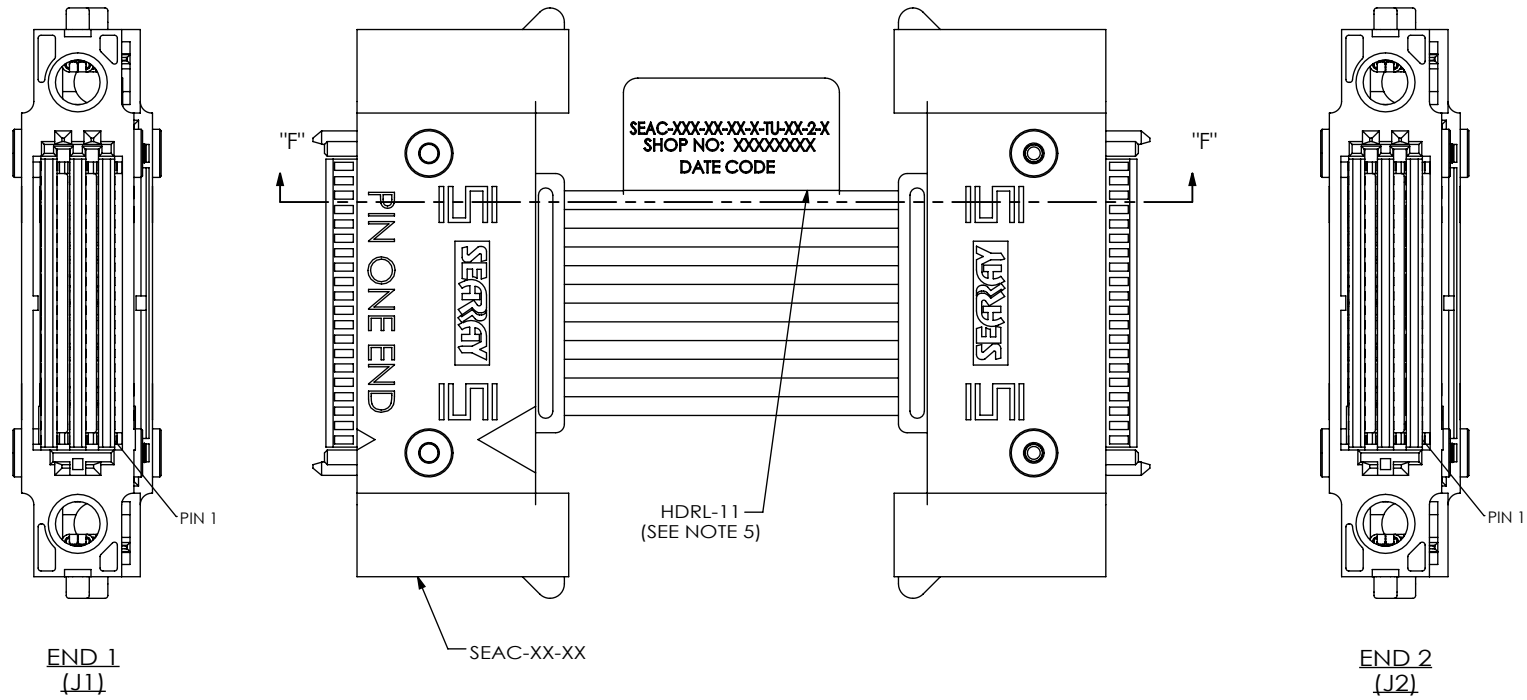
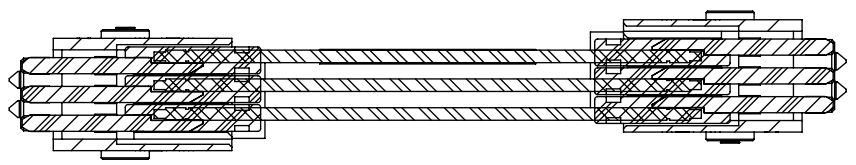


FIG 2
(SEAC-020-06-XX.X-TU-TD-2-X SHOWN)
(SAME AS FIG 1, EXCEPT AS SHOWN)



SECTION "F"- "F"
SCALE 1.5 : 1

<p>DO NOT SCALE DRAWING</p> <p>SHEET SCALE: 1:1</p>	<p>PROPRIETARY NOTE</p> <p>THIS DOCUMENT CONTAINS CONFIDENTIAL AND PROPRIETARY INFORMATION AND ALL DESIGN, MANUFACTURING, REPRODUCTION, USE, PATENT RIGHTS AND SALES RIGHTS ARE EXPRESSLY RESERVED BY SAMTEC, INC. THIS DOCUMENT SHALL NOT BE DISCLOSED, IN WHOLE OR PART, TO ANY UNAUTHORIZED PERSON OR ENTITY NOR REPRODUCED, TRANSFERRED OR INCORPORATED IN ANY OTHER PROJECT IN ANY MANNER WITHOUT THE EXPRESS WRITTEN CONSENT OF SAMTEC, INC.</p>	<p>samtec</p> <p>520 PARK EAST BLVD, NEW ALBANY, IN 47150 PHONE: 812-944-6733 FAX: 812-948-5047 e-Mail info@SAMTEC.com code 55322</p>
	<p>DESCRIPTION: CABLE ASSEMBLY, SEAC SYSTEM</p> <p>DWG. NO. SEAC-XXX-XX-XX.X-TU-XX-2-X</p> <p>BY: ANDREW C 08/06/2013 SHEET 3 OF 4</p>	

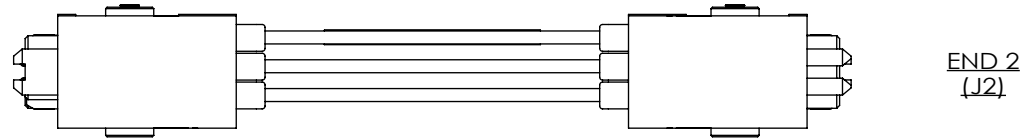
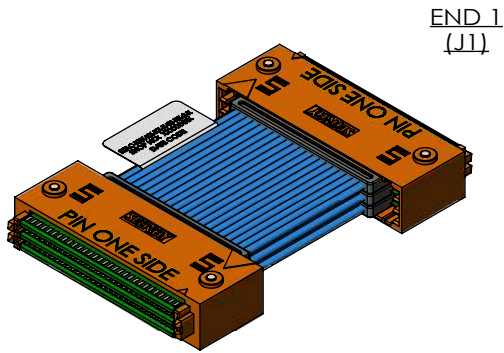
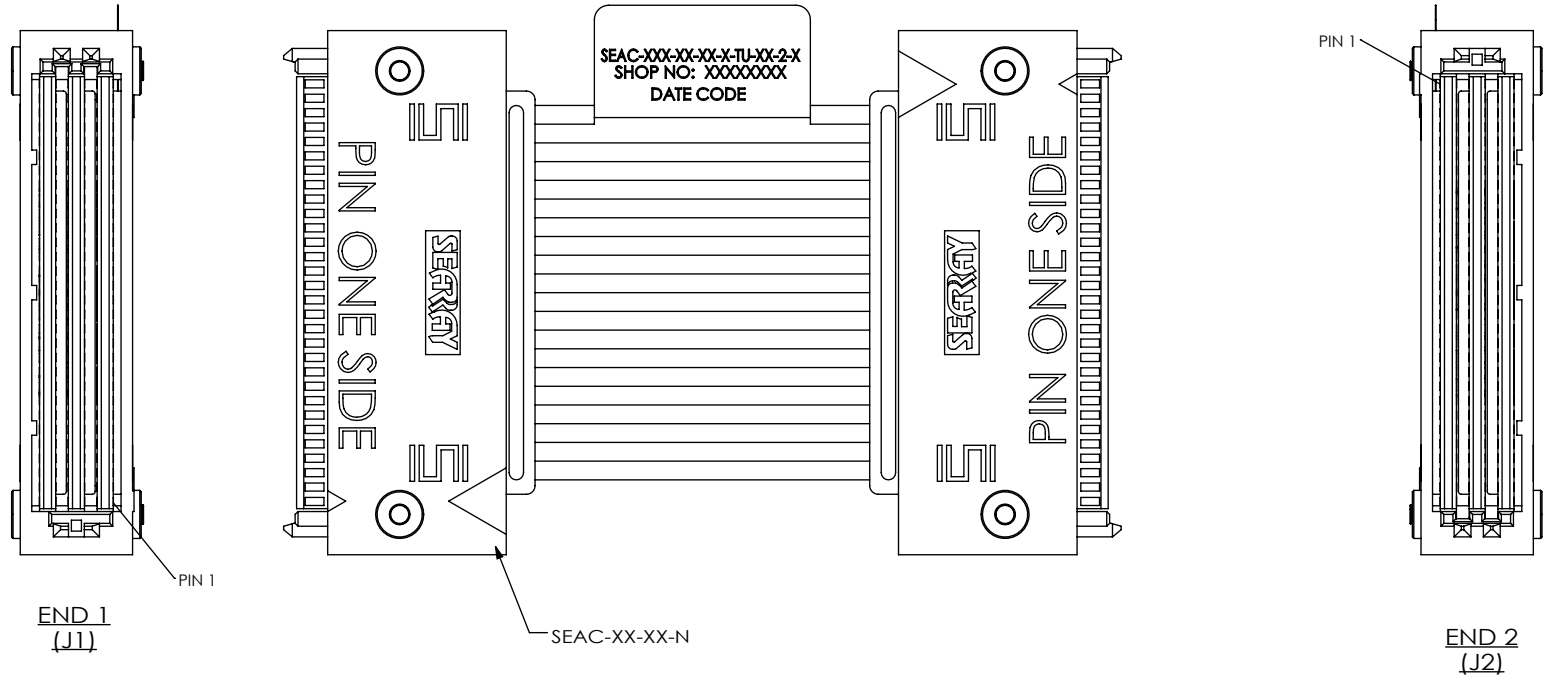



FIG 3
(SEAC-030-06-XX.X-TU-TU-2-N SHOWN)
(SAME AS FIG 1, EXCEPT AS SHOWN)

<p>DO NOT SCALE DRAWING</p> <p>SHEET SCALE: 1:1</p>	<p>PROPRIETARY NOTE</p> <p>THIS DOCUMENT CONTAINS CONFIDENTIAL AND PROPRIETARY INFORMATION AND ALL DESIGN, MANUFACTURING, REPRODUCTION, USE, PATENT RIGHTS AND SALES RIGHTS ARE EXPRESSLY RESERVED BY SAMTEC, INC. THIS DOCUMENT SHALL NOT BE DISCLOSED, IN WHOLE OR PART, TO ANY UNAUTHORIZED PERSON OR ENTITY NOR REPRODUCED, TRANSFERRED OR INCORPORATED IN ANY OTHER PROJECT IN ANY MANNER WITHOUT THE EXPRESS WRITTEN CONSENT OF SAMTEC, INC.</p>	 <p>520 PARK EAST BLVD, NEW ALBANY, IN 47150 PHONE: 812-944-6733 FAX: 812-948-5047 e-Mail info@SAMTEC.com code 55322</p>
	<p>DESCRIPTION:</p> <p>CABLE ASSEMBLY, SEAC SYSTEM</p>	
	<p>DWG. NO.</p> <p>SEAC-XXX-XX-XX.X-TU-XX-2-X</p>	
<p>BY: ANDREW C 08/06/2013</p>		<p>SHEET 4 OF 4</p>