

# SPECIFICATION FOR APPROVAL



TO: \_\_\_\_\_

PART NO.		REV.		DELTA SAMPLE ISSUE NO	
PART NAME	EMI FILTER			DELTA MODEL	15SEEG3S
ORDER P/N.	15SEEG3S			SAMPLE ISSUE DATE	

**1. ELECTRICAL CHARACTERISTICS:**

1-1. VOLTAGE RATING ..... 115/250VAC

1-2. CURRENT RATING

- A. AT 115VAC ..... 15 A RMS Max.
- B. AT 250VAC ..... 10 A RMS Max.

1-3. OPERATING FREQUENCY..... 50/60 Hz

1-4. LEAKAGE CURRENT: EACH LINE TO GROUND

- A. @115VAC 60Hz ..... 0.2 mA Max.
- B. @250VAC 50Hz ..... 0.4 mA Max.

1-5. HIPOT RATING (FOR ONE MINUTE)

- A. LINE TO GROUND ..... 2250VDC
- B. LINE TO LINE ..... 1450VDC

1-6. TEMPERATURE RANGE: -25 ~ +100°C (DERATING ABOVE 40°C)

1-7. MINIMUM INSERTION LOSS IN dB: (AT 50 OHM SYSTEM)

FREQ. MHz	.01	.05	.10	.15	.50	1.0	5.0	10	30
COM. MODE dB	/	/	/	/	8	15	30	30	35
DIF. MODE dB	/	2	8	10	18	20	25	30	35

1-8. SAFETY



REPORT BY	CHECKED BY	APPROVED BY		
			REV.	

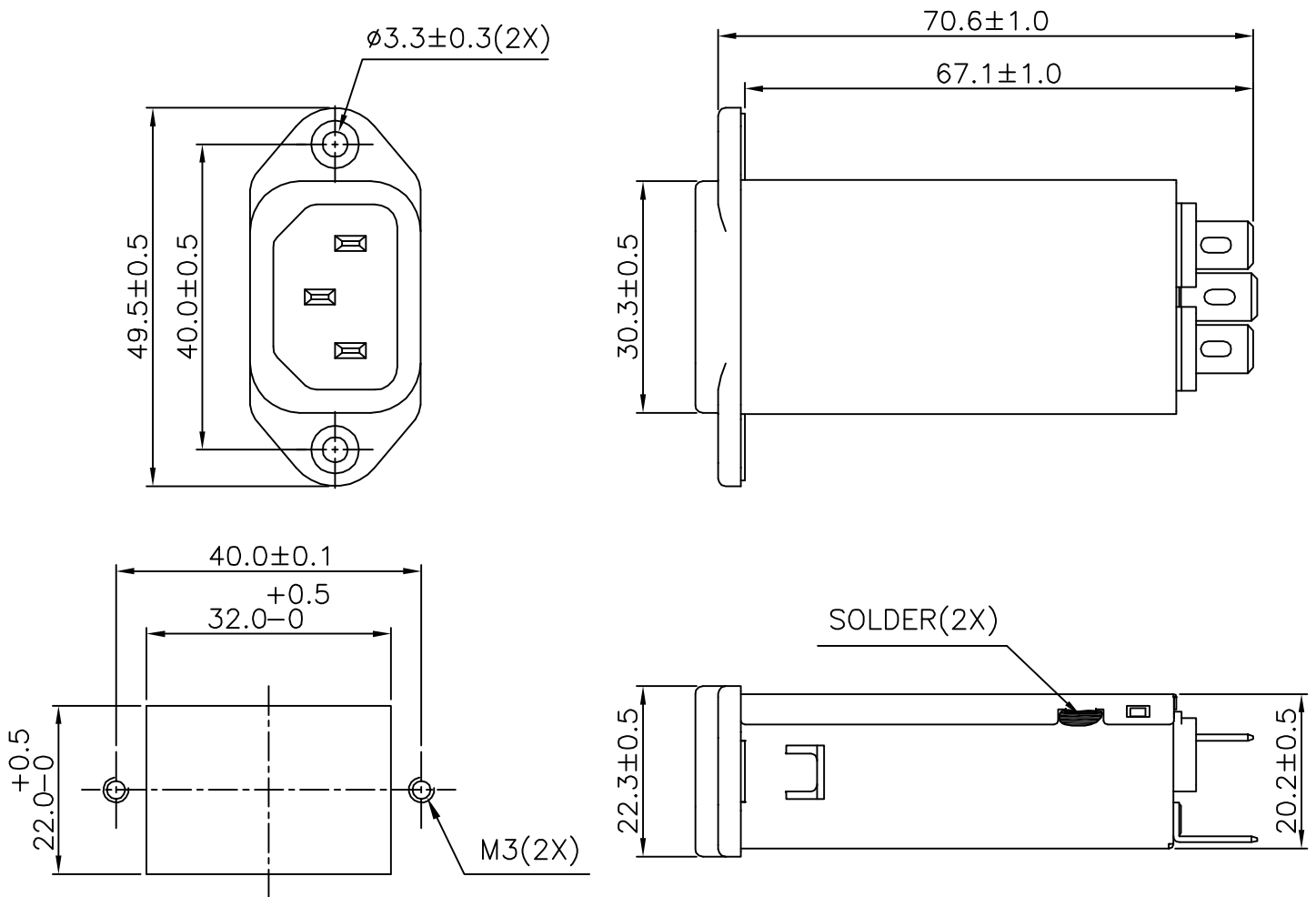
# SPECIFICATION FOR APPROVAL



TO: \_\_\_\_\_

PART NO.		REV.		DELTA SAMPLE ISSUE NO	
PART NAME	EMI FILTER			DELTA MODEL	15SEEG3S
ORDER P/N.	15SEEG3S			SAMPLE ISSUE DATE	

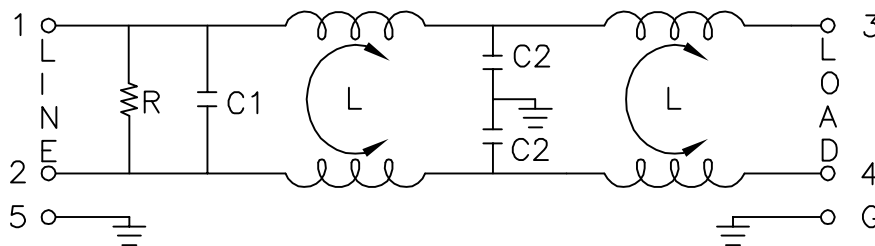
## 2. PHYSICAL DIMENSIONS:



SUGGESTED MOUNTING CUTOUT

UNIT: mm

## 3. SCHEMATIC:



L: 0.12mH  
 C1: 0.22uF  
 C2: 2200pF  
 R: 1.0MΩ

REPORT BY	CHECKED BY	APPROVED BY	UNLESS OTHERWISE SPECIFIED DIMENSION TOLERANCE		
			DCEIMALS .X±	.XX±	ANGLES±
			REV.		

**DELTA ELECTRONICS, INC.**

186 RUEY KUANG ROAD, NEIHU. TAIPEI 114,  
 TAIWAN, R.O.C.  
 TEL:886-2-87972088 FAX:886-2-87972120