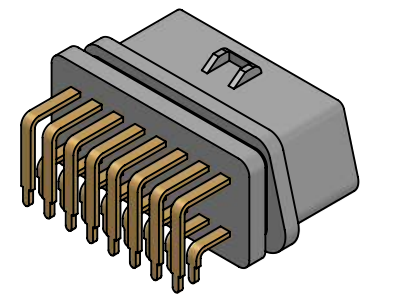
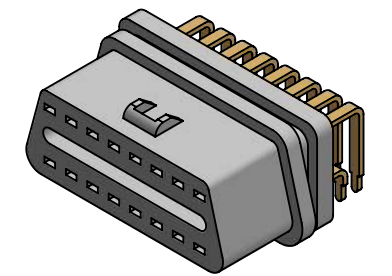
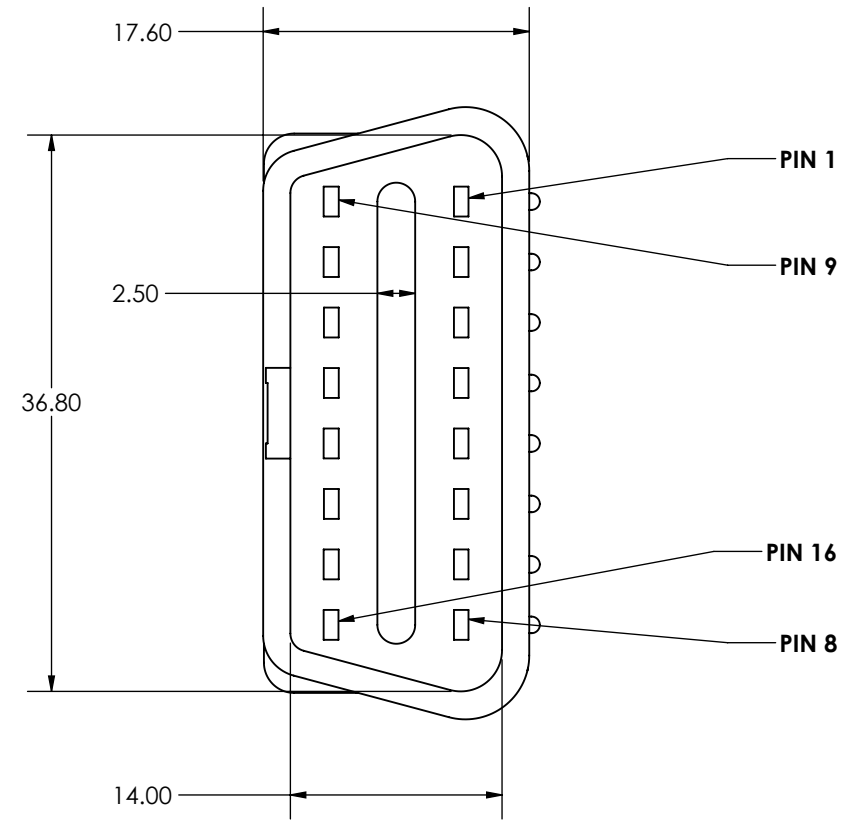
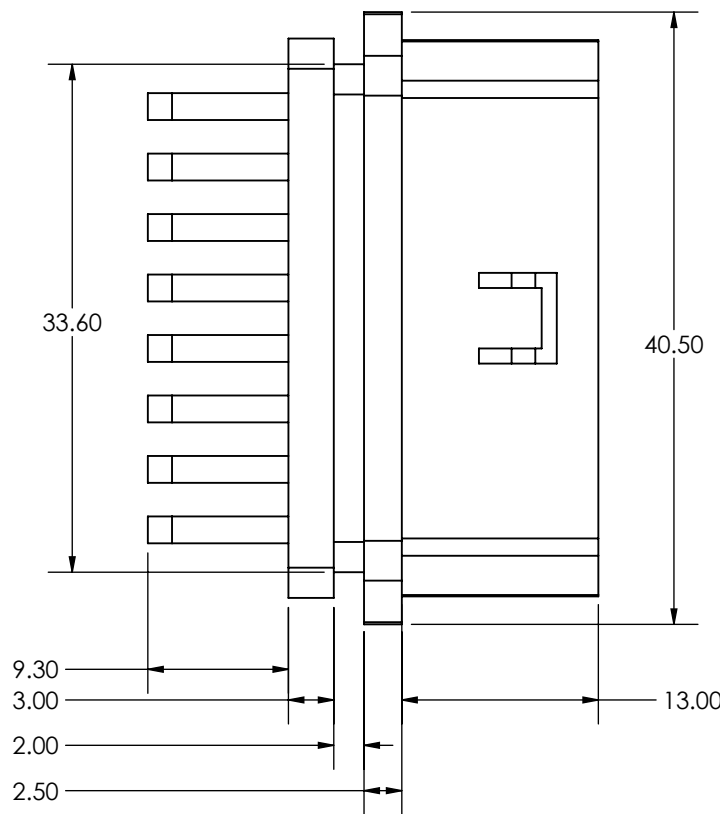
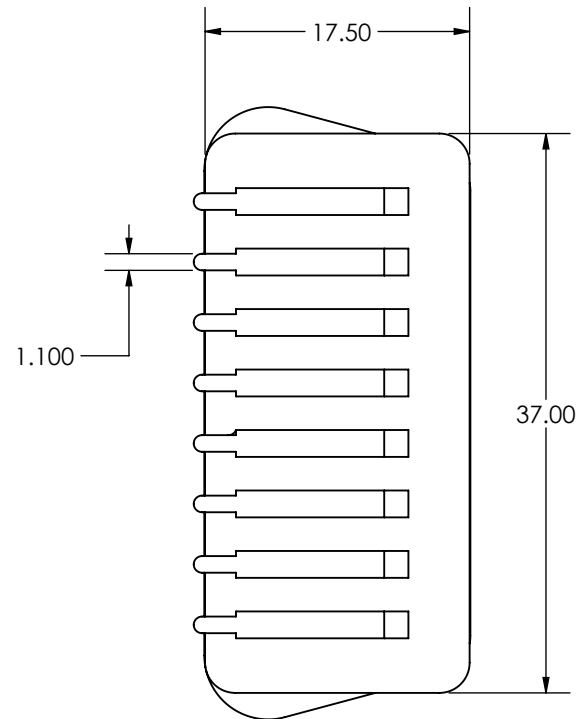


REVISIONS	
REV.	DESCRIPTION
A	INITIAL RELEASE - 6/1/2020

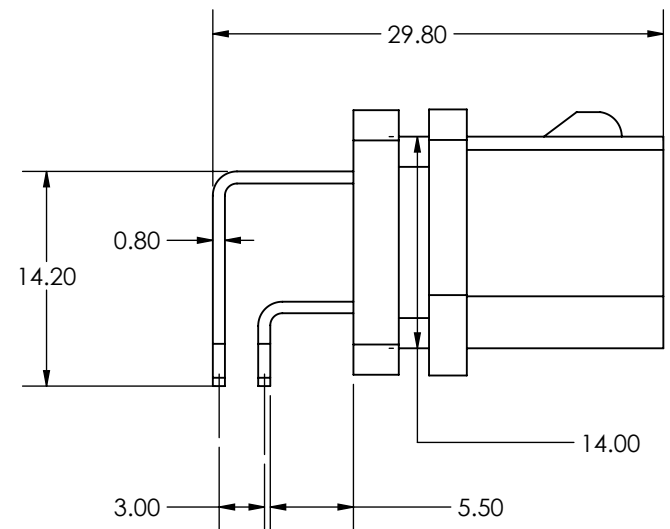



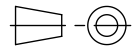
Electrical:

1. Contact Resistance: 3 Ohm MAX
2. Insulation Resistance: 100MOhm Min
3. Rated Voltage: 30V MAX
4. Rated Current: 13 Amps
5. Ambient Temperature Range: -25C to +85C

Mechanical:

1. Housing material: PA66 plus fiber 15%, Color: Black
2. Terminals - Copper, Gold plating 1µm



PROPRIETARY AND CONFIDENTIAL THIS DRAWING OR MATERIAL IS SUBMITTED TO YOU WITH CONFIDENCE THAT IT WILL BE USED ONLY FOR YOUR INFORMATION ON APPLICATION ENGINEERING STUDIES AND SHALL NEVER BE USED IN ANY MANNER DETRIMENTAL TO OUR INTEREST.	DIMENSIONS ARE IN MILLIMETERS UNLESS NOTED. TOLERANCES: ANGULAR: ± 1 ° X ± 1 X.X ± 0.3 X.XX ± 0.10	 MACCHINA LLC P.O. BOX 18701 MINNEAPOLIS, MN 55418 www.macchina.cc
	THIRD ANGLE PROJECTION 	
DO NOT SCALE DRAWING	SIZE B DWG. NO. CCBDF20	REV. A
	SCALE: 2:1 WEIGHT:	SHEET 1 OF 1