

DO NOT SCALE FROM THIS PRINT

SEI-1XX-02-XX-S-X-XX-XX

NO OF POSITIONS
 -05, -10, -15, -20, -25, -30 (PER ROW)
 (OTHER POSITIONS AVAILABLE AS ASO. TOOL IS CAPABLE OF POSITIONS 5-30)

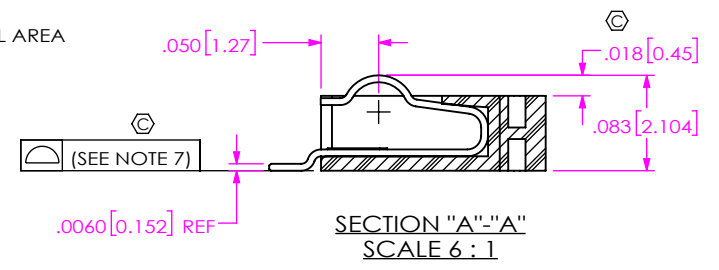
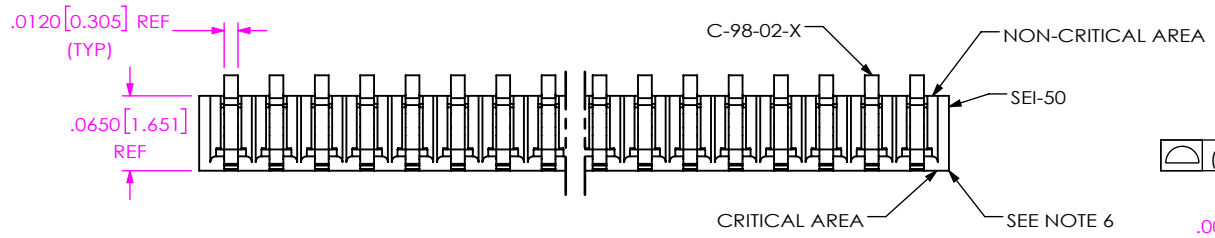
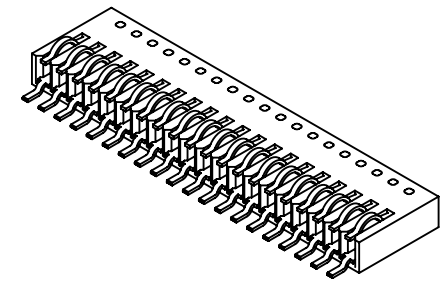
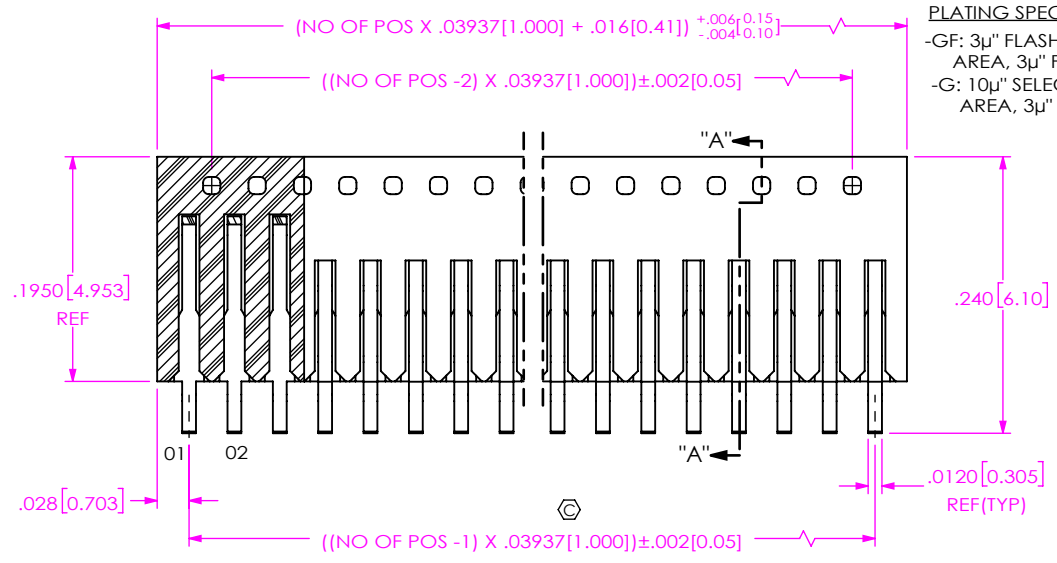
LEAD STYLE
 (USE C-98-02-X)

PACKAGING
 BLANK: TUBES (SEE NOTES 10 & 11)
 -TR: TAPE & REEL (SEE NOTES 11 & 12)
 -FR: FULL REEL QTY TAPE & REEL (SEE NOTES 11 & 12)

ALIGNMENT PIN LOCATION
 -AT: TOP SIDE
 -AB: BOTTOM SIDE
 (USE SM-A9H FOR ALL POSITIONS)
 (MOLDED TO POSITIONS A.P. FOR LARGE QTY'S)

THREADED INSERT OPTION
 -E: THREADED INSERT, ENGLISH (USE SEI-XX-T)
 -M: THREADED INSERT, METRIC (USE SEI-XX-T)

ROW SPECIFICATION
 -S: SINGLE



- NOTES:
- ⊙ REPRESENTS A CRITICAL DIMENSION.
 - MINIMUM PUSHOUT FORCE: 6 OZ.
 - LOAD INSERTS IN DIRECTION OF ARROW.
 - PACKAGE ALL POSITIONS IN A PT-1-24-01-68 WITH TWO TP-12 PLUGS PER TUBE.
 - THREADED INSERT MUST BE ABLE TO HANDLE 20 IN-OZ'S OF TORQUE MIN(WITHOUT ROTATING OR "LOOSENING")
 - NO CUT FLASH IN CRITICAL AREAS AS SHOWN.
 .010[0.25] MAX CUT FLASH IN NON-CRITICAL AREAS AS SHOWN.
 - CO-PLANARITY FOR POS. -05 THRU -25: .004[0.10] MAX;
 FOR POS. -26 THRU -30: .006[0.15] MAX;
 CO-PLANARITY IS THE PLANCE FORMED BY THE BOTTOM OF THE BODY AND THE BOTTOM OF THE CONTACT.
 - NOTE DELETED.
 - BODIES MAY BE USED MTP WITH OR WITHOUT ALIGNMENT PINS AT PURCHASING DISCRETION.
 - TUBES ARE STANDARD PACKAGING.
 - ORDERS WILL BE PACKAGED ACCORDING TO THE SAMTEC PACKAGING EFFICIENCY STANDARDS (SPES) FOUND ON WWW.SAMTEC.COM.
 - ATTACH LABEL TO EACH REEL.

FIG 1
 SEI-1XX-02-XX-S SHOWN

UNLESS OTHERWISE SPECIFIED, DIMENSIONS ARE IN INCHES. TOLERANCES ARE: DECIMALS ANGLES .XX: ±.01[0.3] .XXX: ±.005[0.13] .XXXX: ±.0020[0.051]	* PROPRIETARY NOTE * THIS DOCUMENT CONTAINS CONFIDENTIAL AND PROPRIETARY INFORMATION AND ALL DESIGN, MANUFACTURING, REPRODUCTION, USE, PATENT RIGHTS AND SALES RIGHTS ARE EXPRESSLY RESERVED BY SAMTEC, INC. THIS DOCUMENT SHALL NOT BE DISCLOSED, IN WHOLE OR PART, TO ANY UNAUTHORIZED PERSON OR ENTITY NOR REPRODUCED, TRANSFERRED OR INCORPORATED IN ANY OTHER PROJECT IN ANY MANNER WITHOUT THE EXPRESS WRITTEN CONSENT OF SAMTEC, INC.	DESCRIPTION: 1 MM SINGLE ELEMENT INTERFACE
		DWG. NO. SEI-1XX-02-XX-S-X-XX-XX
MATERIAL: INSULATOR: VECTRA E130I, COLOR: BLACK CONTACT : PHOS BRONZE	DO NOT SCALE DRAWING SHEET SCALE: 1:2	BY: D PURVIS 12/11/1996 SHEET 1 OF 3

TABLE 1		
OPTION	INSERT	THREAD
-E	INSL-2-56-X	2 X 56
-M	INSL-M2-4-N	M2.0 X 4

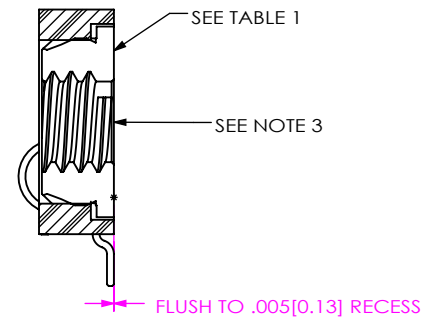
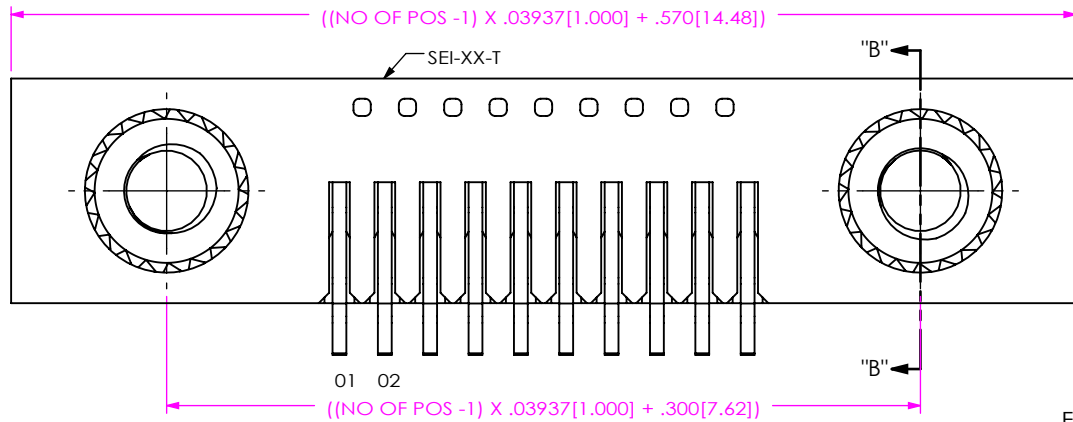


FIG 2
 THREADED INSERT OPTION
 (SEI-1XX-02-XX-S-E SHOWN)
 (DIFFERENT AS SHOWN, OTHERWISE SAME AS FIG 1)

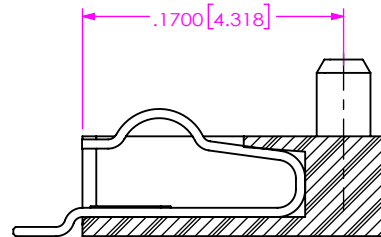
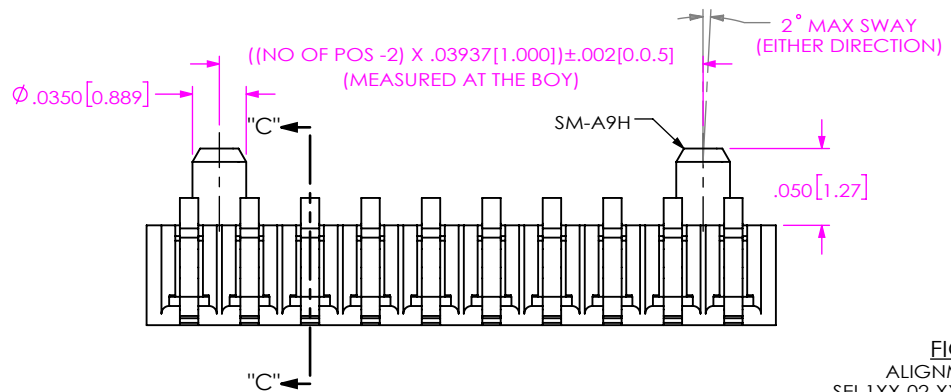


FIG 3
 ALIGNMENT PIN
 SEI-1XX-02-XX-S-AT SHOWN
 (SEE FIG 5 & 6 FOR IN-PROCESS)
 (DIFFERENT AS SHOWN, OTHERWISE SAME AS FIG 1)

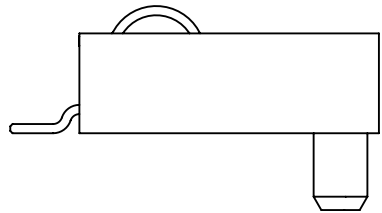
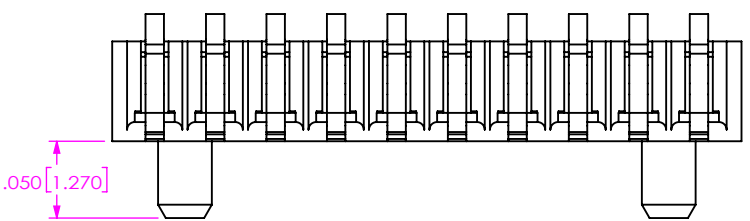


FIG 4
 ALIGNMENT PIN
 SEI-1XX-02-XX-S-AB SHOWN
 (SEE FIG 5 & 6 FOR IN-PROCESS)
 (DIFFERENT AS SHOWN, OTHERWISE SAME AS FIG 3)

PROPRIETARY NOTE
 THIS DOCUMENT CONTAINS CONFIDENTIAL AND PROPRIETARY INFORMATION AND ALL DESIGN, MANUFACTURING, REPRODUCTION, USE, PATENT RIGHTS AND SALES RIGHTS ARE EXPRESSLY RESERVED BY SAMTEC, INC. THIS DOCUMENT SHALL NOT BE DISCLOSED, IN WHOLE OR PART, TO ANY UNAUTHORIZED PERSON OR ENTITY NOR REPRODUCED, TRANSFERRED OR INCORPORATED IN ANY OTHER PROJECT IN ANY MANNER WITHOUT THE EXPRESS WRITTEN CONSENT OF SAMTEC, INC.



520 PARK EAST BLVD, NEW ALBANY, IN 47150
 PHONE: 812-944-6733 FAX: 812-948-5047
 e-Mail: info@SAMTEC.com code 55322

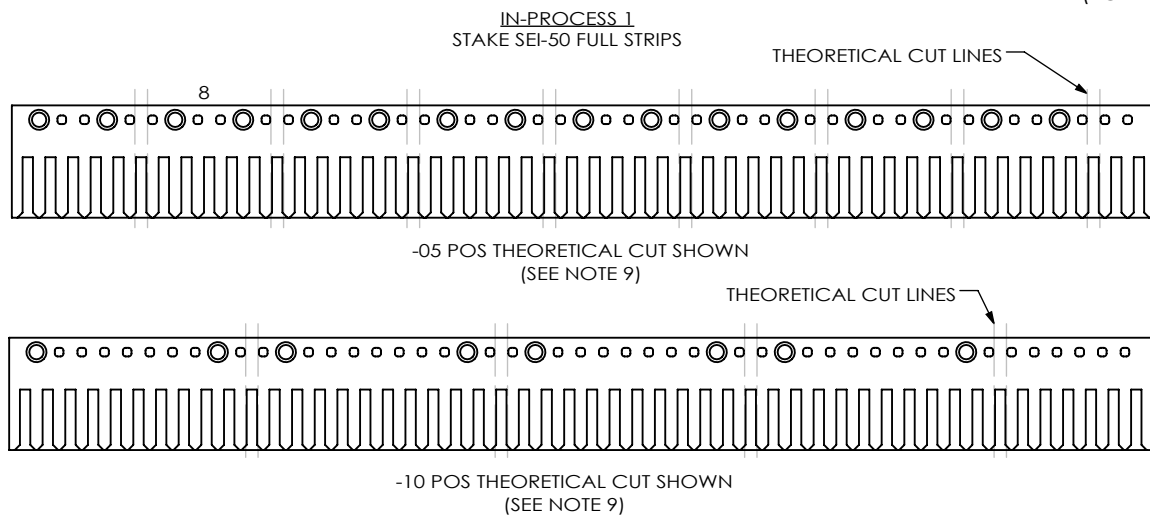
SHEET SCALE: 8:1

DESCRIPTION:
 1MM SINGLE ELEMENT INTERFACE

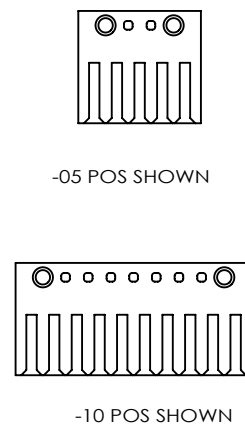
DWG. NO.
SEI-1XX-02-XX-S-X-XX-XX

BY: D PURVIS 12/11/1996 SHEET 2 OF 3

FIG 5
IN-PROCESS FOR STAKED ALIGNMENT PINS
(FOR -05 THRU -16 POS)



IN-PROCESS 2
ROTOCUT TO POSITION



IN-PROCESS 3
LOAD CONTACTS

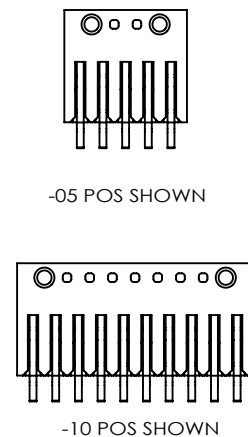
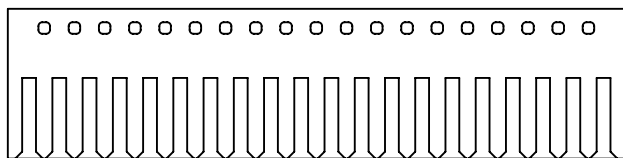
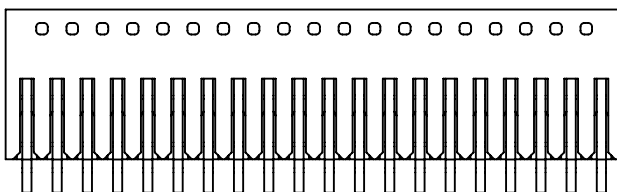


FIG 6
IN-PROCESS FOR STAKED ALIGNMENT PINS
(FOR -17 THRU -30 POS)

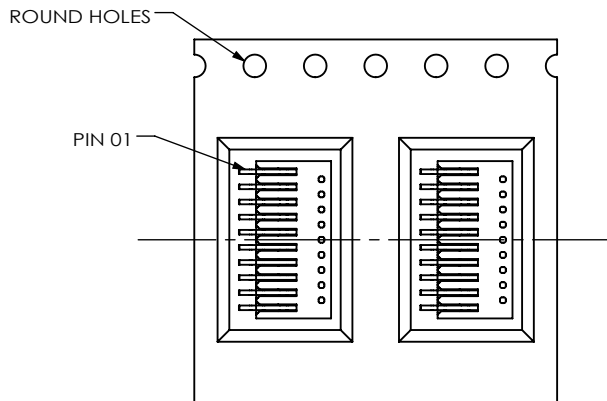
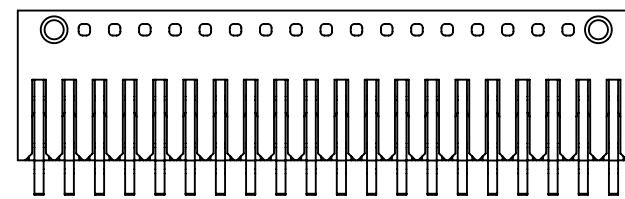
IN-PROCESS 1
ROTO CUT TO POSITION
(20 POS SHOWN)



IN-PROCESS 2
LOAD CONTACTS
(20 POS SHOWN)

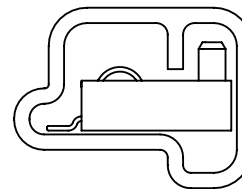


IN-PROCESS 3
STAKE PER CUT STRIP
(20 POS SHOWN)

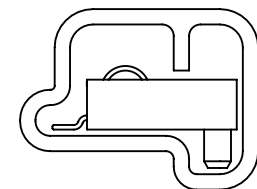


USER DIRECTION OF UN-REELING →
POCKET NOT DETAILED

TAPE & REEL VIEW



-AT OPTION SHOWN



-AB OPTION SHOWN

TUBE VIEW
PT-1-24-01-68 & TP-12

PROPRIETARY NOTE
THIS DOCUMENT CONTAINS CONFIDENTIAL AND PROPRIETARY INFORMATION AND ALL DESIGN, MANUFACTURING, REPRODUCTION, USE, PATENT RIGHTS AND SALES RIGHTS ARE EXPRESSLY RESERVED BY SAMTEC, INC. THIS DOCUMENT SHALL NOT BE DISCLOSED, IN WHOLE OR PART, TO ANY UNAUTHORIZED PERSON OR ENTITY NOR REPRODUCED, TRANSFERRED OR INCORPORATED IN ANY OTHER PROJECT IN ANY MANNER WITHOUT THE EXPRESS WRITTEN CONSENT OF SAMTEC, INC.

SHEET SCALE: 8:1
DO NOT SCALE DRAWING



520 PARK EAST BLVD, NEW ALBANY, IN 47150
PHONE: 812-944-6733 FAX: 812-948-5047
e-Mail: info@SAMTEC.com code 55322

DESCRIPTION:
1MM SINGLE ELEMENT INTERFACE

DWG. NO.
SEI-1XX-02-XX-S-X-XX-XX

BY: D PURVIS 12/11/1996 SHEET 3 OF 3