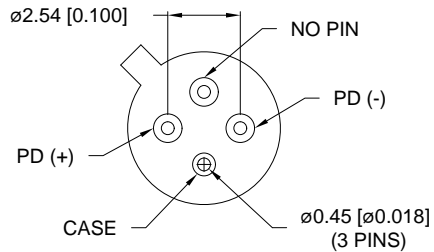
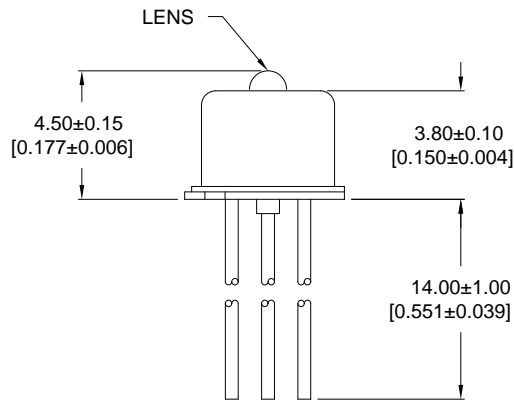
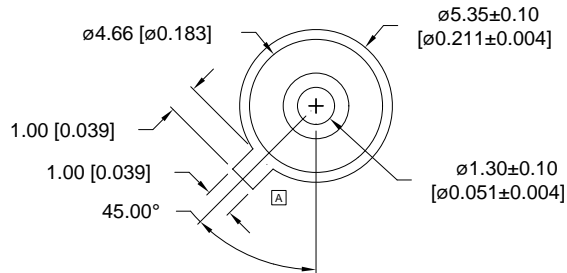


UNCONTROLLED DOCUMENT



| | | |
|-----------------|-------------------------------------|------|
| PART NUMBER | | REV. |
| OED-PPD11075G-B | | A |
| REV. | E.C.N. NUMBER AND REVISION COMMENTS | DATE |

ELECTRO-OPTICAL CHARACTERISTICS (Tc=25°C, Vr=5V).

| PARAMETER | SYMBOL | MIN | TYP | MAX | UNITS |
|------------------|--------|------|------|------|-------|
| ACTIVE AREA | - | | 75 | | µm |
| DETECTION RANGE | - | 1100 | 1310 | 1600 | nm |
| RESPONSIVITY* | R | 0.8 | 0.9 | | A/W |
| DARK CURRENT | Id | | 0.3 | 2 | nA |
| CAPACITANCE | C | | 0.8 | 2.0 | pF |
| CUTOFF FREQUENCY | fc | 1.5 | 2.0 | | GHz |
| RISE/FALL TIME | tr/tf | | 0.3 | 0.5 | ns |


*λFromans.shx;=1300nm

ABSOLUTE MAXIMUM RATINGS (Tc=25°C)

| PARAMETER | SYMBOL | MAX | UNITS |
|-----------------|--------|------------|-------|
| REVERSE VOLTAGE | Vr | 25 | V |
| REVERSE CURRENT | Ir | 1 | mA |
| FORWARD CURRENT | If | 2 | mA |
| OPERATING TEMP. | Top | 40 TO + 85 | °C |
| STORAGE TEMP. | Tstg | 40 TO + 85 | °C |

UNCONTROLLED DOCUMENT

*UNLESS OTHERWISE SPECIFIED TOLERANCE IS ±0.25mm (±0.010")

| | | | |
|---------------------|---------------------------------------|---|--|
| REV. A | PART NUMBER OED-PPD11075G-B | <p>CONFIDENTIAL INFORMATION</p> <p>THE INFORMATION CONTAINED IN THIS DOCUMENT IS THE PROPERTY OF LUMEX INC. EXCEPT AS SPECIFICALLY AUTHORIZED IN WRITING BY LUMEX INC., THE HOLDER OF THIS DOCUMENT SHALL KEEP ALL INFORMATION CONTAINED HEREIN CONFIDENTIAL AND SHALL PROTECT SAME IN WHOLE OR IN PART FROM DISCLOSURE AND DISSEMINATION TO ALL THIRD PARTIES.</p> <p>RELIABILITY NOTE</p> <p>OUR MANY YEARS OF EXPERIENCE DATA ACCUMULATION INDICATE THAT SOLDER HEAT IS A MAJOR CAUSE OF EARLY AND FUTURE FAILURE. PLEASE PAY ATTENTION TO YOUR SOLDERING PROCESS.</p> |  <p>290 E. HELLEN ROAD PALATINE, ILLINOIS 60067 PHONE: 1-847-359-2790 WEB: HTTP://WWW.LUMEX.COM</p> |
| PIN PHOTO DETECTOR. | | DRAWN BY: DU/BC CHECKED BY: APPROVED BY: | DATE: 2-12-99 PAGE: 1 OF 1 SCALE: N/A |