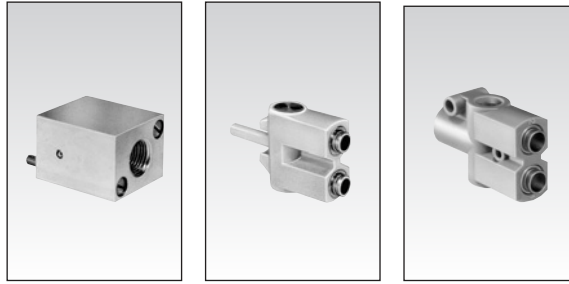


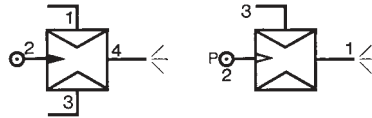
# Vacuum handling components

1



## Part numbers

Vacuum generators	<b>81 535 301</b> Sub-base mounting	<b>81 545 001</b> Plug-in	<b>81 545 004</b> Plug-in
-------------------	--	------------------------------	------------------------------

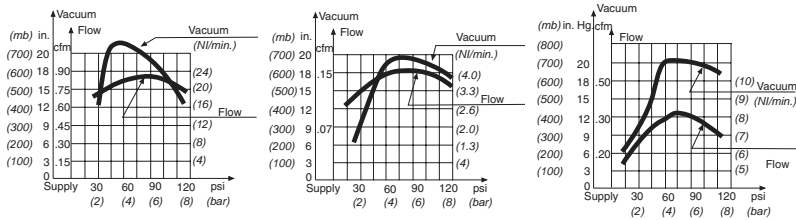
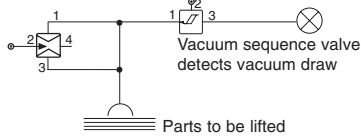


## Characteristics

Push-in connectors for semi-rigid tubing (NFE 49100)	Male/Female/Female (MFF) Female/Female/ Female (FFF)	—	Ø 5/32" (4mm)	—
Operating pressure	psi (bars)	30 > 120 (2 > 8)	30 > 120 (2 > 8)	30 > 120 (2 > 8)
Vacuum pad material		—	—	(6 mm)
Weight	grams	80	13	25

Detection of the pressure decrease can be achieved by the use of manostats (see page 3/5)

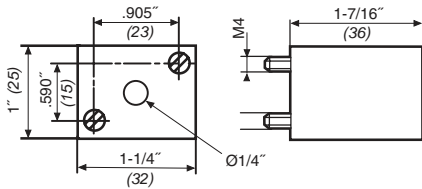
### Typical Application



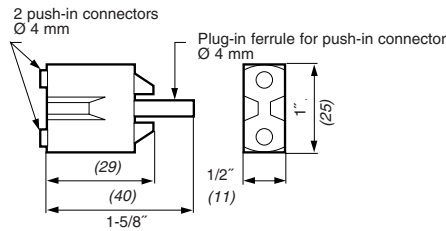
## Dimensions

### 81 535 301

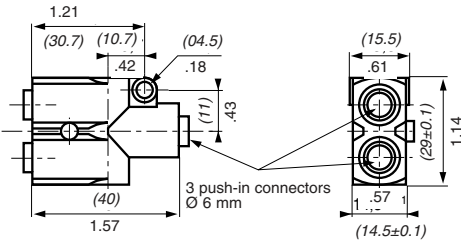
Sub-base mounting 81 531... and 81 532...



### 81 545 001



### 81 545 005



use (metric) dimensions for critical data.

Other information	To order, specify :
Sub-base for mounting see page 4/14 - 4/15	Standard products <b>1</b> Part number Example : Vacuum generator - 81 535 301

Products and specifications subject to change without notice.  
Consult factory for application assistance.

204 Airline Drive, Suite 300, Coppell, Texas 75019 / Tel: (888) 778-2733 / FAX: (888) 329-9773 / www.crouzet-usa.com