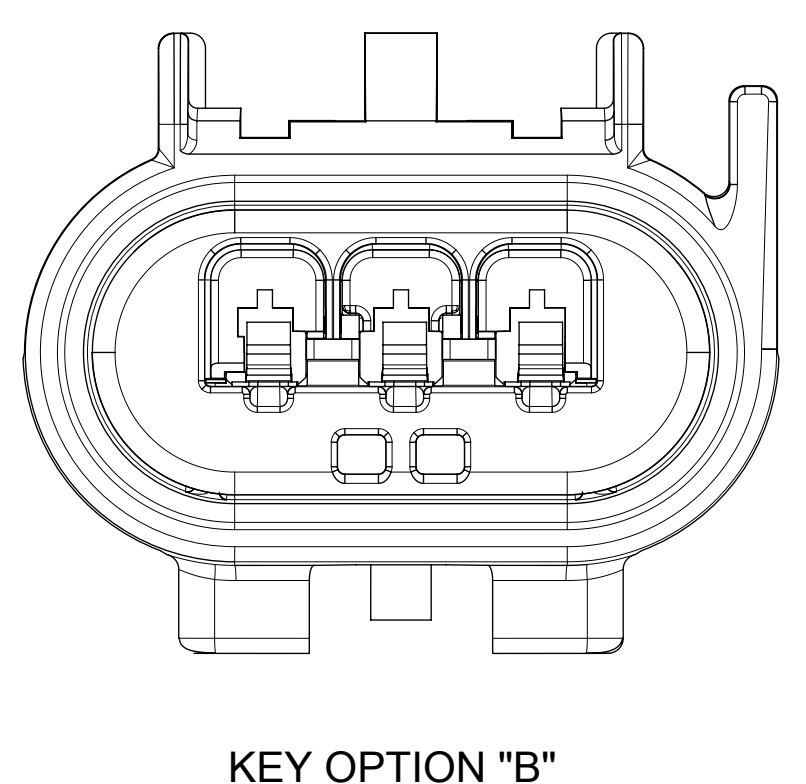
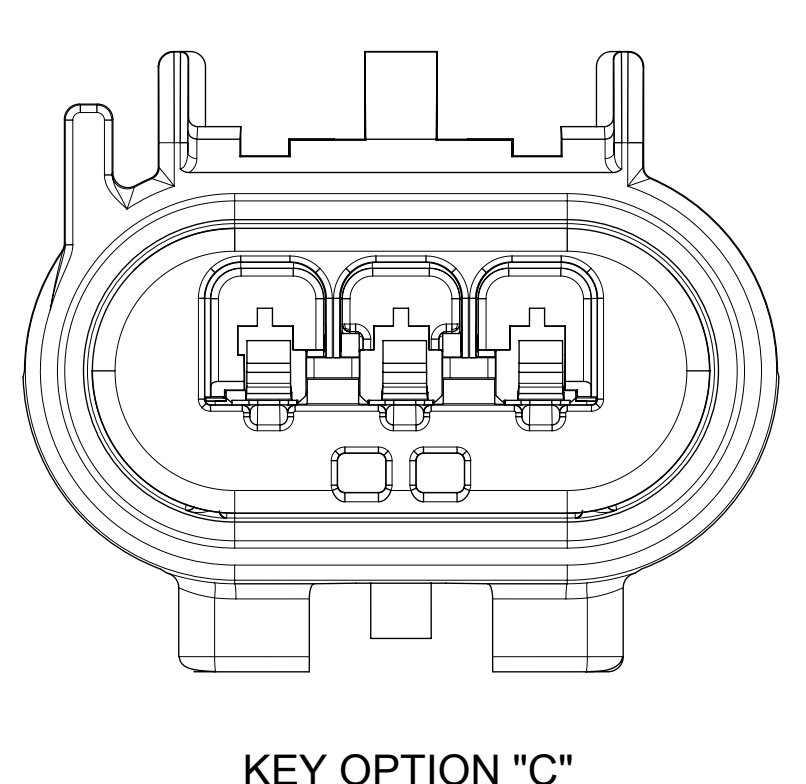


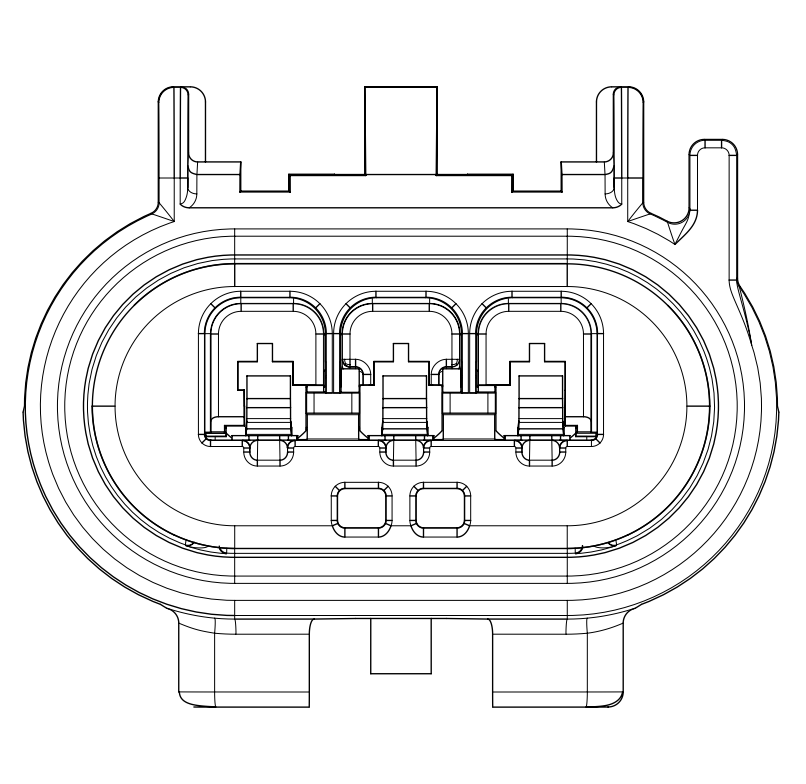
KEY OPTION "A"



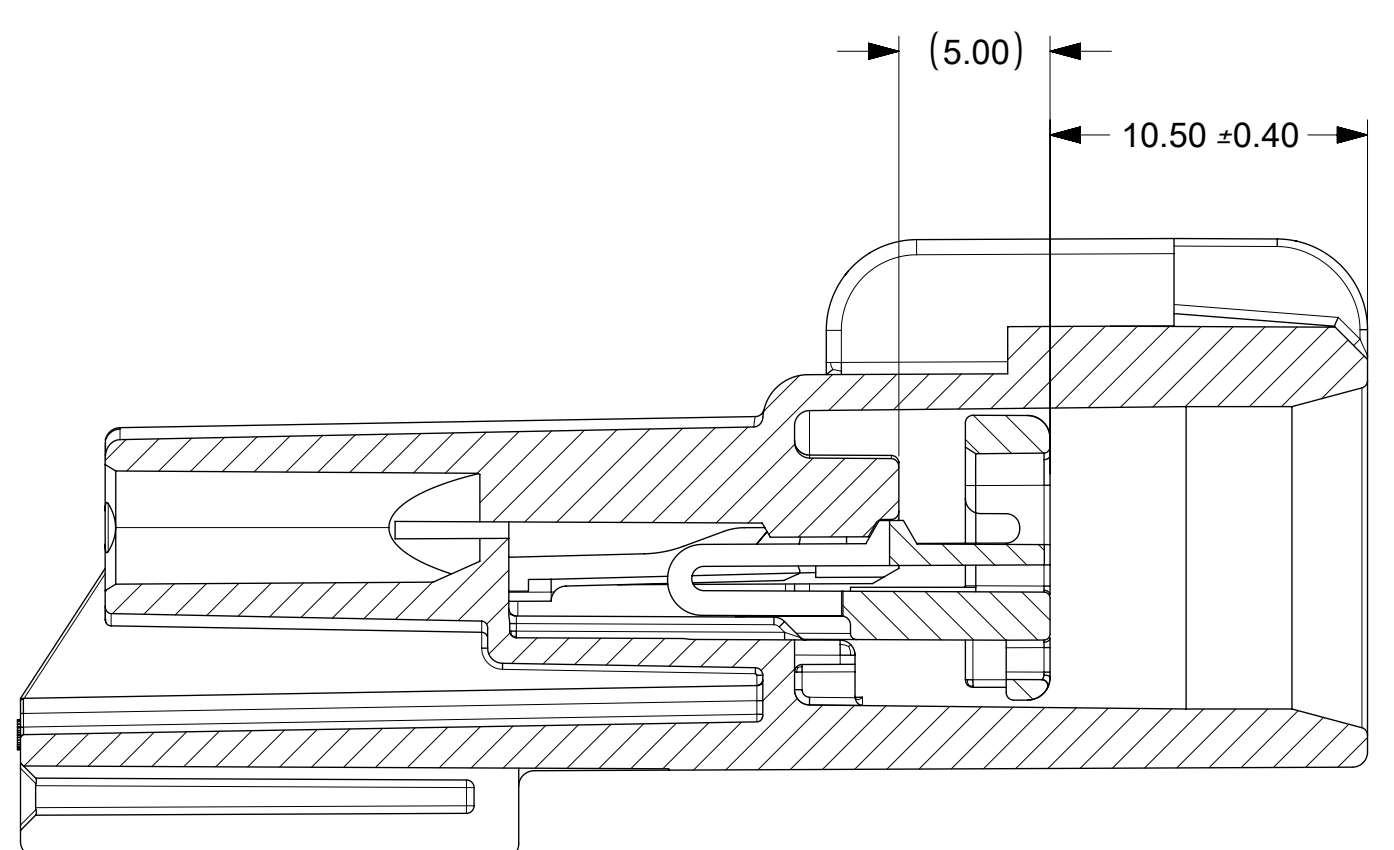
KEY OPTION "B"



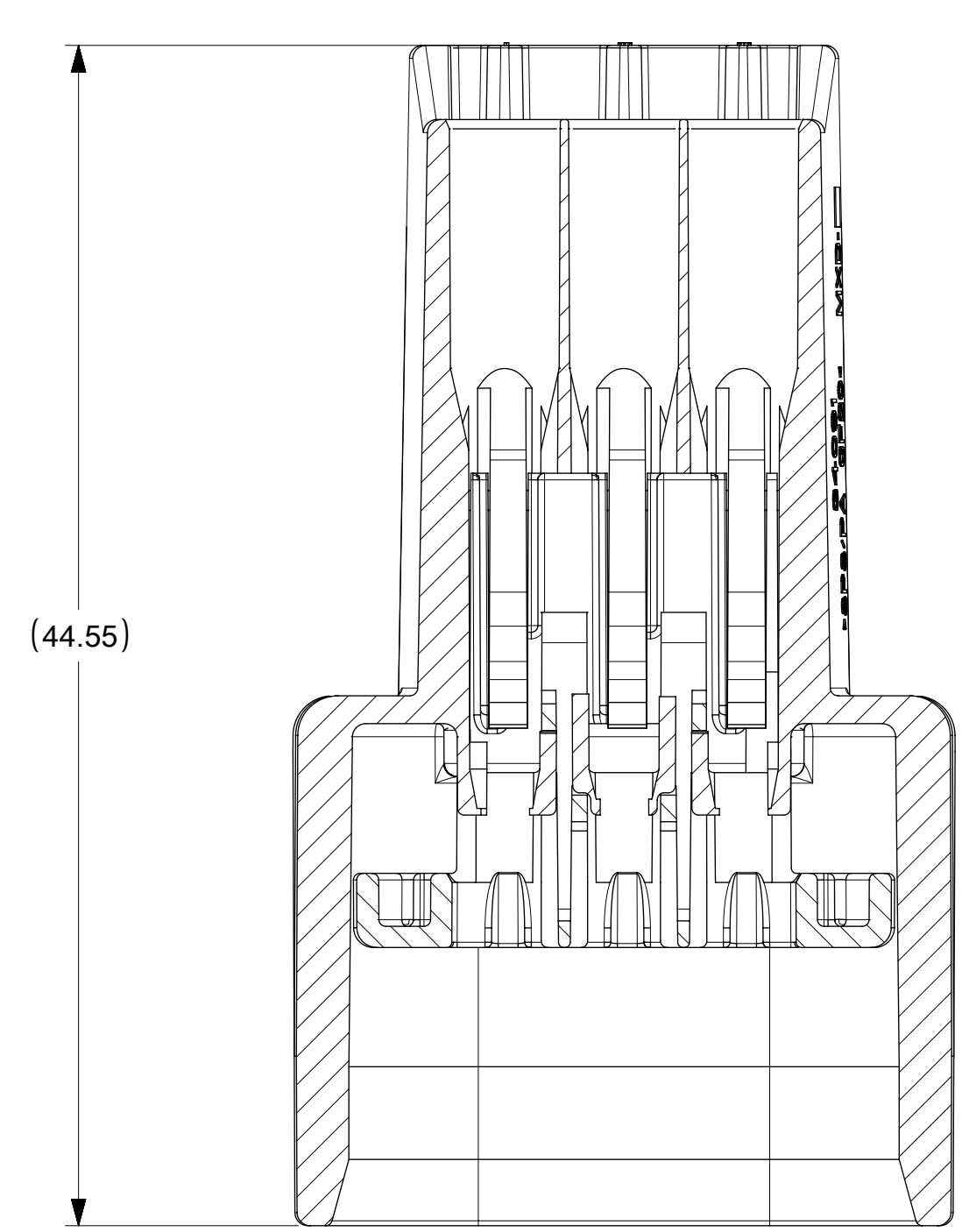
KEY OPTION "C"



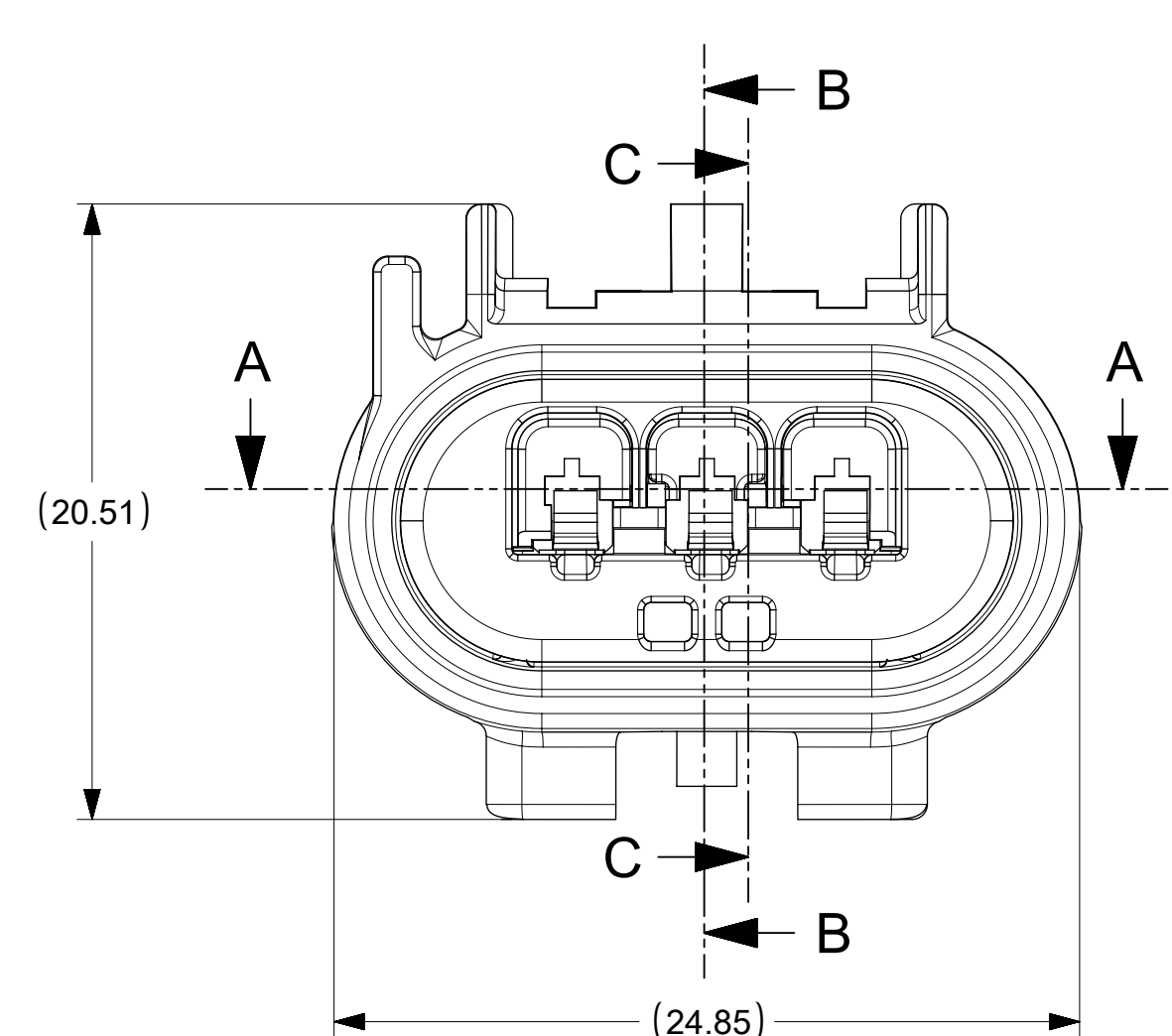
KEY OPTION "D"



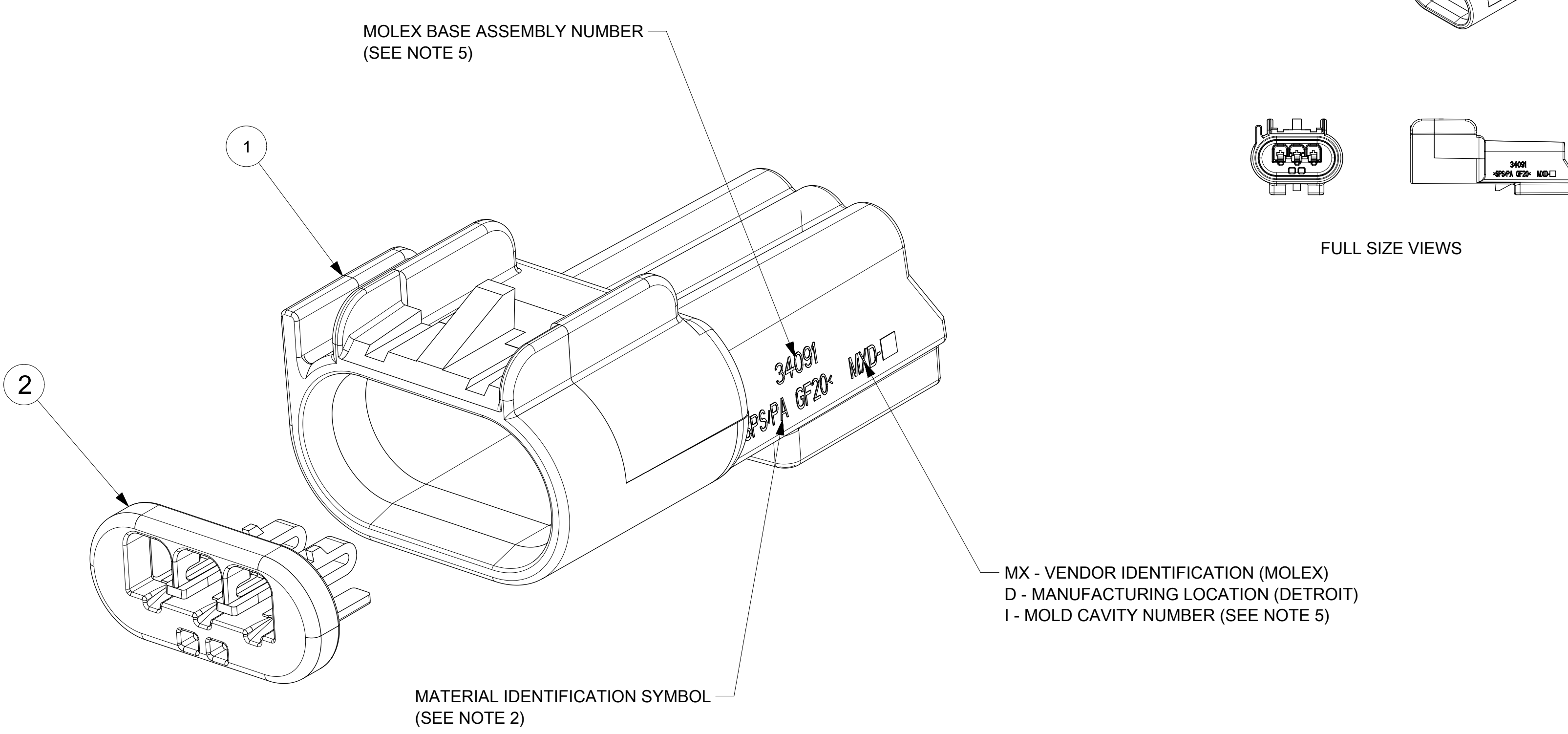
SECTION C-C
TPA SHOWN IN PRELOCK



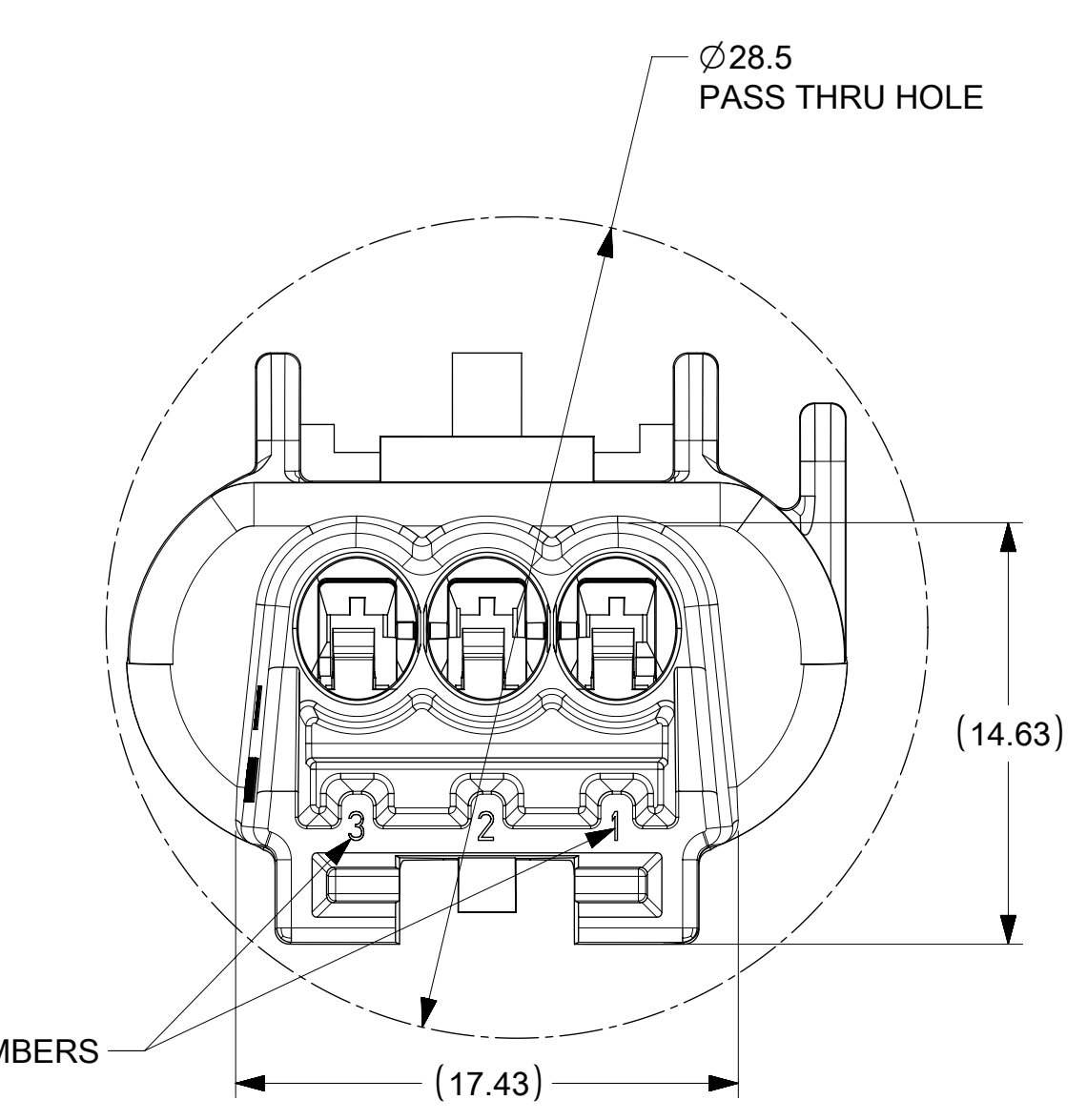
SECTION A-A



SECTION B-B



FULL SIZE VIEWS



CIRCUIT ID NUMBERS

ITEM	DESCRIPTION	COLOR	MATERIAL	NO. OF ITEMS REQUIRED
1	HOUSING - MALE 3WAY (KEY OPTION "C")	BROWN	SPS/PA GF20%	1
	HOUSING - MALE 3WAY (KEY OPTION "D")	GREEN	SPS/PA GF20%	1
	HOUSING - MALE 3WAY (KEY OPTION "D")	BLACK	SPS/PA GF20%	1
	HOUSING - MALE 3WAY (KEY OPTION "C")	DARK GRAY	SPS/PA GF20%	1
	HOUSING - MALE 3WAY (KEY OPTION "D")	STONE GRAY	SPS/PA GF20%	1
2	TERMINAL POSITION ASSURANCE DEVICE (TPA)	NATURAL	PBT GF30%	1 1 1 1 1

MOLEX ASM NUMBERS	STATUS
34091-0003	SALEABLE
34091-0004	SALEABLE
34091-0005	SALEABLE
34091-0006	SALEABLE
34091-0007	SALEABLE

TERMINAL/WIRE/SEAL APPLICATION						
DESCRIPTION	PLATING	FORD COMPONENT NO.	MATERIAL/SPEC. NO.	WIRE TYPE AND SIZE ESB-MIL123-A	WIRE DIAMETER RANGE	WIRE SEAL
1.5 TERMINAL (M)	TIN	97BG-14421-ADA	COPPER ALLOY/WSS-M99P23-B	22, 20 AWG	1.19 - 1.65 O.D.	97BG-10C930-SBA
1.5 TERMINAL (M)	TIN	97BG-14421-AEA	COPPER ALLOY/WSS-M99P23-B	18, 16 AWG	1.60 - 2.10 O.D.	XW43-14603-AA
1.5 TERMINAL (M)	GOLD	97BG-14421-AHA	COPPER ALLOY/WSS-M99P23-B	22, 20 AWG	1.19 - 1.65 O.D.	97BG-10C930-SBA
1.5 TERMINAL (M)	GOLD	97BG-14421-AJA	COPPER ALLOY/WSS-M99P23-B	18, 16 AWG	1.60 - 2.10 O.D.	XW43-14603-AA

- UNLESS OTHERWISE SPECIFIED:
- FINAL CONNECTOR ASSEMBLY MUST MATE TO RECEPTACLE ASSEMBLY SPECIFIED ON FORD DRAWINGS 4L3T-14A464-VA AND 5L3T-14A464-BA
 - WHEREVER SIZE PERMITS, ALL PLASTIC PARTS MUST HAVE MATERIAL IDENTIFICATION SYMBOLS CLEARLY MARKED.
 - CHANGES IN DESIGN COMPOSITION OR PROCESSING FROM THE PART PREVIOUSLY APPROVED FOR PRODUCTION REQUIRES PRIOR ENGINEERING APPROVAL.
 - PARTS MUST BE FREE OF SCRATCHES, DISCOLORATION, SALT RESIDUE OR OTHER IMPERFECTIONS THAT MAY AFFECT FUNCTION OR FIT OF PARTS.
 - SOURCE IDENTIFICATION MARK, PRODUCTION DATE CODE AND MOLEX ASSEMBLY PART NUMBER MUST BE PERMANENTLY APPLIED ON THE PART WITH 1.5mm LETTER SIZE FROM THE BOTTOM TO THE TOP OF THE CHARACTER AND LEGIBLE WHEREVER PACKAGE SIZE PERMITS OR OTHER AGREEMENTS ARE MADE.
 - PART MUST CONFORM TO THE ELECTRICAL CONNECTION SYSTEM DESIGN SPECIFICATION (SDS) REVISION 8 (DATED 11-20-00).
 - PART MUST CONFORM TO SAE/USCAR-2 REV. 3 DATED APRIL 2001 - CLASS 3
 - MAXIMUM USER FORCE TO MATE CONNECTOR FULLY POPULATED WITH TIN TERMINALS SHALL BE 55 N.
 - FOR BLADE TERMINALS AND WIRE SEALS TO BE USED WITH THIS ASSEMBLY, SEE TABLE FOR APPLICABLE COMPONENTS.
 - 0.3mm MAXIMUM RADIUS PERMISSIBLE ON EDGES AND FILLETS SHOWN AS SHARP.
 - IT IS INTENDED TO COMPLY WITH USCAR DRAWING NO. 150-S-003-1-202 WITH THE FOLLOWING EXCEPTIONS:
(1.60) WAS 1.2
(14.05) WAS 14.20
R(3.00) WAS R1.0
 - PACKAGING: PLEASE REFER TO PK-31300-004

A5	DELETE THE COMPONENTS PART NUMBER IN THE TABLE
A4	NX-RE MASTERING
REV.	DESCRIPTION

QUALITY SYMBOLS = 0 = 0 = 0 = 0 = 0 = 0 = 0 = 0 = 0 = 0	EC NO: 619197 DRWN: XLDONG03 CHKD: JDENG02 REV APPR: JDENG02	2019/08/14 2019/08/21 2019/08/21	GENERAL TOLERANCES (UNLESS SPECIFIED) ANGULAR TOL ±	DIMENSION UNITS: MM SCALE: 4:1	<p>BLADE CONNECTOR 3WAY 1.5MM CABLE SEAL</p> <p>PRODUCT CUSTOMER DRAWING</p> <p>SERIES: 34091 MATERIAL NUMBER: SEE CHART CUSTOMER: GENERAL MARKET</p> <p>DOCUMENT NUMBER: SD-34091-001 DOC TYPE: PSD DOC PART: 000 SHEET NUMBER: 1 OF 1</p>
	DRAFT WHERE APPLICABLE MUST REMAIN WITHIN DIMENSIONS	4 PLACES ± 3 PLACES ± 2 PLACES ± 1 PLACE ± 0 PLACES ±	DRWN BY: DLANGOLF DATE: 11/20/02 CHK'D BY: RKAKKURI DATE: 11/20/02 APPR BY: CPENDLETON DATE: 11/20/02	DRAWING SIZE: E THIRD ANGLE PROJECTION	
	THIS DRAWING CONTAINS INFORMATION THAT IS PROPRIETARY TO MOLEX ELECTRONIC TECHNOLOGIES, LLC AND SHOULD NOT BE USED WITHOUT WRITTEN PERMISSION	A5	DIMENSION UNITS: MM SCALE: 4:1	DRAWING SIZE: E THIRD ANGLE PROJECTION	
	THIS DRAWING CONTAINS INFORMATION THAT IS PROPRIETARY TO MOLEX ELECTRONIC TECHNOLOGIES, LLC AND SHOULD NOT BE USED WITHOUT WRITTEN PERMISSION	A5	DIMENSION UNITS: MM SCALE: 4:1	DRAWING SIZE: E THIRD ANGLE PROJECTION	