

# PRODUCT DATA DRAWING

|                             |                               |                               |
|-----------------------------|-------------------------------|-------------------------------|
| CAD<br>GENERATED<br>DRAWING | DCN<br>CONTROLLED<br>DOCUMENT | DWG.NO.<br><b>SF8934-6006</b> |
|-----------------------------|-------------------------------|-------------------------------|

**ROHS COMPLIANT**

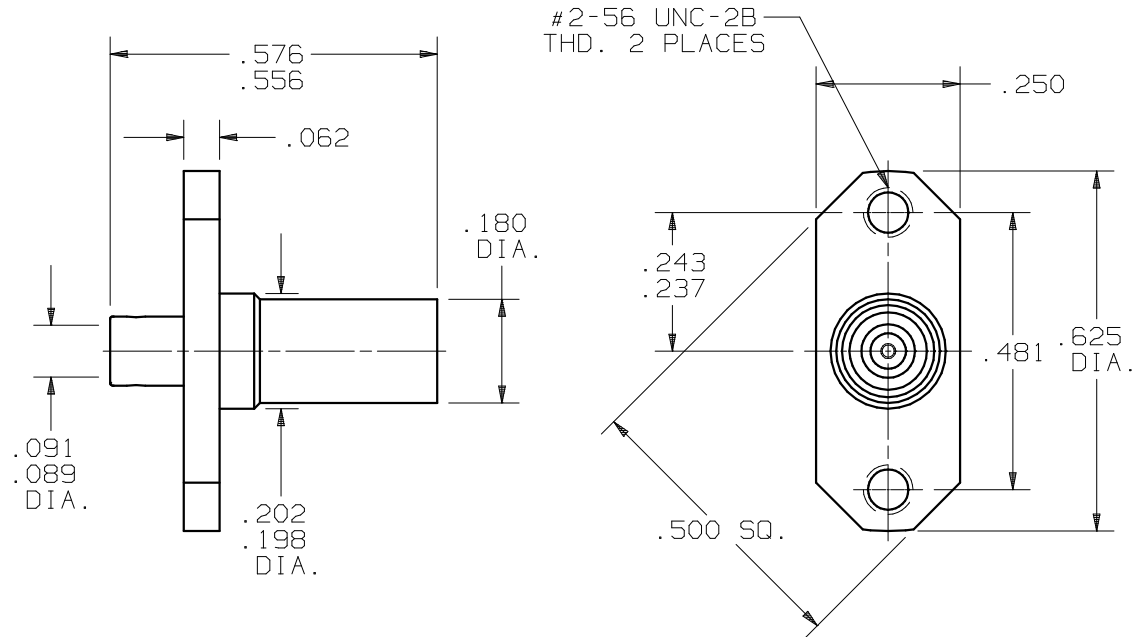
**MATERIALS:**

BODY: STAINLESS STEEL PER AMS-5640,  
 UNS 530300, TYPE I  
 REAR BODY: BRASS PER ASTM-B-16, ALLOY  
 UNS C36000, H02  
 CONTACT: BERYLLIUM COPPER PER ASTM-196,  
 COND. TD04, ALLOY UNS-C17300  
 INSULATORS: TEFLON PER ASTM-D-1457

**FINISHES:**

BODY: PASSIVATE PER QQ-P-35C TYPE II  
 REAR BODY,  
 CONTACT: GOLD PER MIL-G-45204, TYPE I,  
 GRADE C, OVER NICKEL PER  
 QQ-N-290, CLASS 1

IMPEDANCE: 50 OHMS  
 FREQ. RANGE: 2.0 GHz TO 18 GHz  
 D.W.V.: 1000 VRMS  
 INSUL. RES.: 100,000 MEGOHMS MIN.



|      |                |       |                        |  |   |                                    |                                  |  |        |  |
|------|----------------|-------|------------------------|--|---|------------------------------------|----------------------------------|--|--------|--|
| SYM. | DESCRIPTION    | DATE  | APPR.                  | UNLESS OTHERWISE SPECIFIED:<br>1) ALL DIMENSIONS ARE AFTER PLATING.<br>2) BREAK CORNERS & EDGES .005 R. MAX.<br>3) CHAM. 1st & LAST THDS.<br>4) SURFACE ROUGHNESS 63 J MIL-STD-10.<br>5) DIAS. ON COMMON CENTERS TO BE CONCENTRIC WITHIN .005 T.I.R.<br>6) REMOVE ALL BURRS. | DIMENSIONS ARE IN INCHES                        |                                    |                                  | <b>SV Microwave, Inc.</b><br>www.svmicrowave.com |        |  |
|      | REL. NRN 28967 | 10/02 | STW                    |  | DECIMALS<br>.X ±.030<br>.XX ±.015<br>.XXX ±.005 | TOLERANCES:<br>FRACTIONAL<br>±1/64 | ANGULAR<br>X° ±1°0'<br>X°X' ±15' |  | TITLE: |  |
|      |                |       |                        |  | DRAWN: VMJ 10/02/02                             | MATERIAL: SEE P/L                  |                                  |  |        | "BMZ" 2 HOLE FLANGE MT. JACK, TO .085 S.R. CABLE |
|      |                |       |                        |  | CHECKED: STW 10/03/02                           | FINISH: SEE P/L                    | AREA: N/A                        |  |        | DWG. NO.   |
|      |                |       | APPROVED: STW 10/03/02 | SIZE   |   | SCALE                              | SF8934-6006                      |  |        |  |
|      |                |       |                        | A  |   | 3X                                 |                                  |  |        |  |