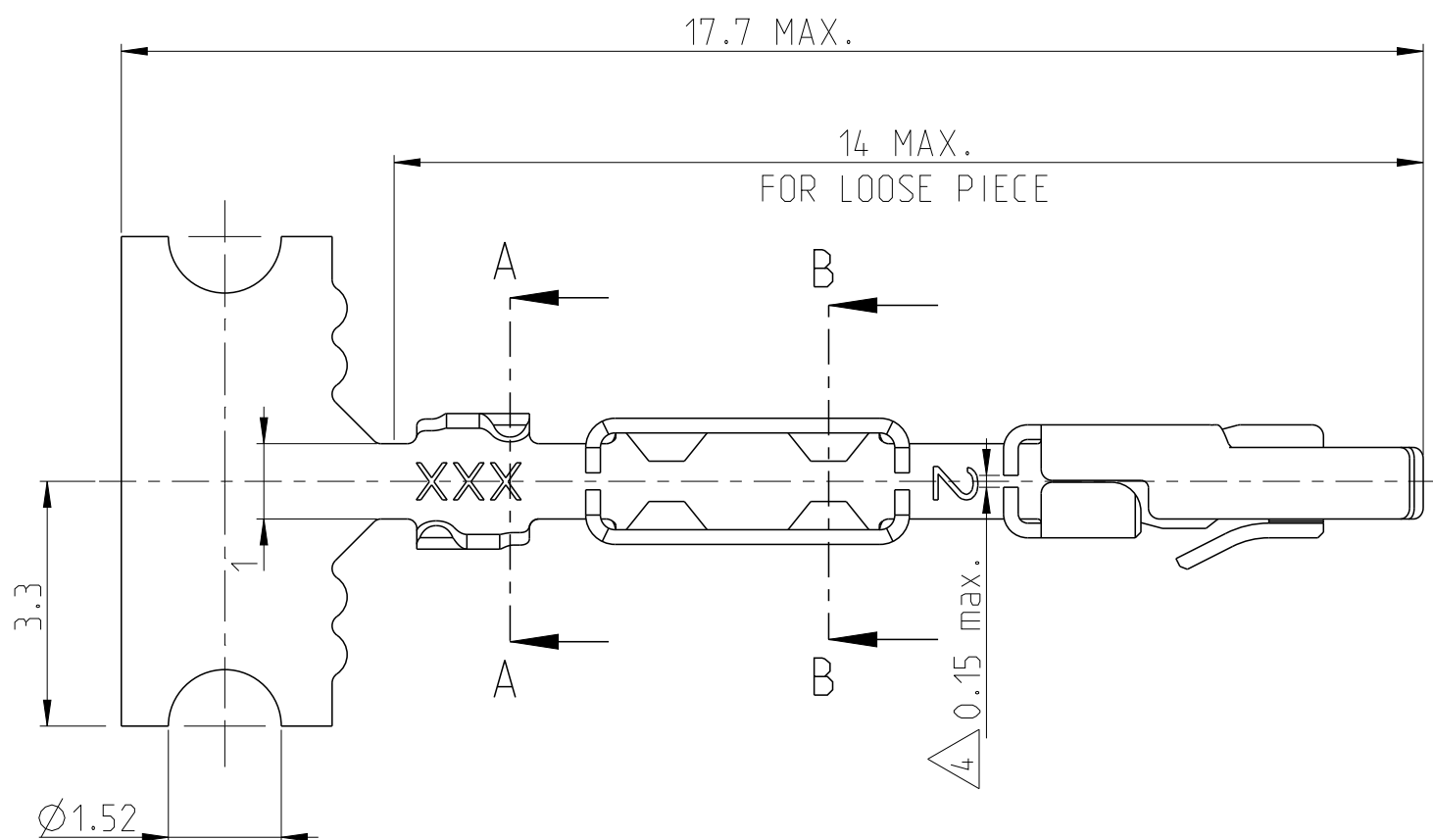


REVISIONS

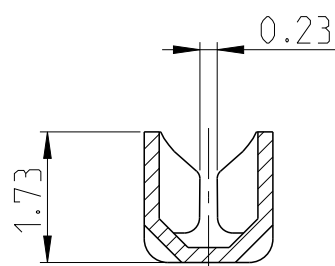
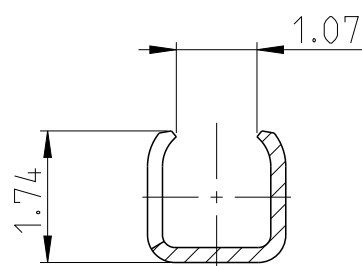
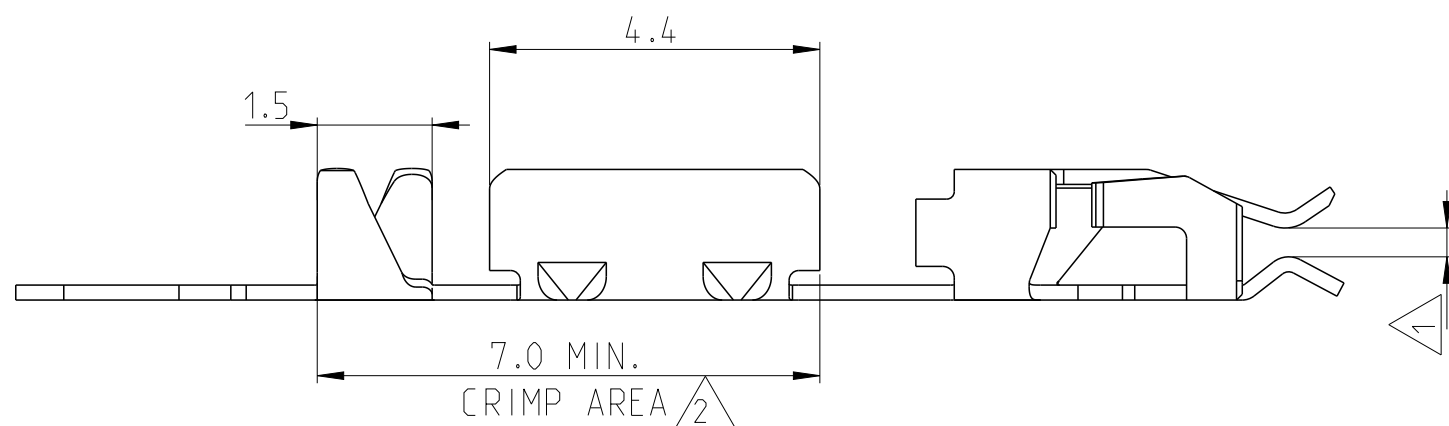
| P | LTR | DESCRIPTION | DATE | DWN | APVD |
|---|-----|-----------------------------|-----------|-------|------|
| | C1 | NEW DRAWING CREATED IN CREO | 03FEB2015 | JB JH | BRUN |
| | C2 | LEAD REMOVED AT NOTE 2 | 18NOV2015 | MAH. | BRUN |
| | | | | | |



NOTES:

- 1 SUITABLE FOR 0.64 x 0.64 POST
- 2 CRIMP AREA PLATED WITH 2.5 μm MIN. TIN OVER 0.8 NICKEL
- 3 GOLD PLATING
 - 2 0.4 μm GOLD OVER 0.8 μm NICKEL
 - 3 0.8 μm GOLD OVER 0.8 μm NICKEL
 - 4 1.25 μm GOLD OVER 0.8 μm NICKEL
 - 5 2.0 μm GOLD OVER 0.8 μm NICKEL
 - 1- -5 1.5 μm GOLD OVER 1.25 μm NICKEL
 - 1- -6 1 μm GOLD OVER 1.25 μm NICKEL
 - 8 1.7 μm GOLD OVER 0.8 μm NICKEL

4 POST STOP DIMENSION



SECTION A-A

SECTION B-B

| | | |
|------------|-----------------|---------|
| 215141-8 | PHOSPHOR BRONZE | |
| 1-215141-6 | | |
| 1-215141-5 | | |
| 215141-5 | | |
| 215141-4 | | |
| 215141-3 | | |
| 215141-2 | | |
| ORDER NO. | MATERIAL | PLATING |

| | | | | | |
|--|---|------------------|-----------|---------------------|--|
| THIS DRAWING IS A CONTROLLED DOCUMENT. | | DWN | 03FEB1986 | TE Connectivity | NAME RECEPTICAL CONTACT WITH MASS TERMINATION AREA FOR AWG 26-22 |
| DIMENSIONS: mm | | CHK | 05FEB1986 | | |
| TOLERANCES UNLESS OTHERWISE SPECIFIED: | | APVD | 17FEB1986 | | |
| 0 PLC | ± | PRODUCT SPEC | - | SIZE | A3 |
| 1 PLC | ± | APPLICATION SPEC | - | CAGE CODE | - |
| 2 PLC | ± | WEIGHT | - | DRAWING NO | ©=215141 |
| 3 PLC | ± | CUSTOMER DRAWING | - | RESTRICTED TO | - |
| 4 PLC | ± | SCALE | 10:1 | SHEET | 1 OF 1 |
| ANGLES | ± | SCALE | 10:1 | REV | C2 |
| FINISH | - | | | | |