

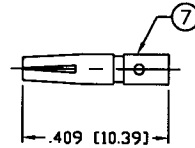
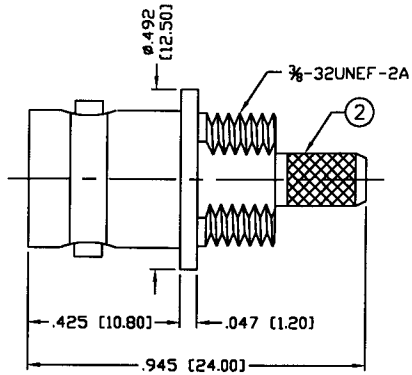
THIS DRAWING CONTAINS INFORMATION PROPRIETARY TO RF INDUSTRIES.  
 ANY UNAUTHORIZED USE OF THIS DRAWING IS EXPRESSLY PROHIBITED  
 WITHOUT WRITTEN PERMISSION FROM RF INDUSTRIES.  
 ANY VIOLATION IS PUNISHABLE UNDER U.S. COPYRIGHT LAWS.

ALL DIMENSIONS ARE REFERENCE ONLY

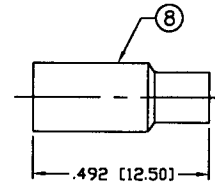
PART NO.

**RFB-1116-B-03**

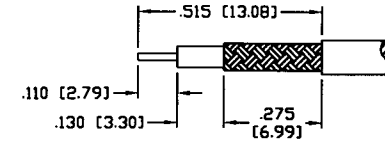
REV	DESCRIPTION	DWN	DATE	APPROVED
-	ENGINEERING RELEASE	CZS	12/20/82	JDMc



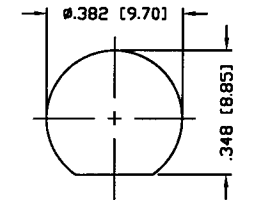
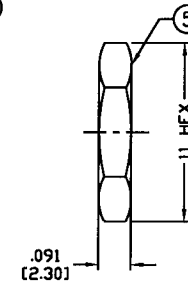
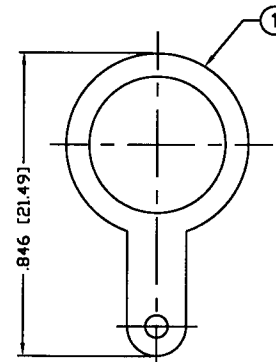
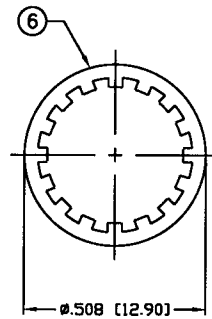
RECOMMENDED CRIMP DIE: .068"



RECOMMENDED CRIMP DIE: .184"



RECOMMENDED STRIPPING DIMENSIONS



RECOMMENDED MOUNTING HOLE

**SPECIFICATIONS:**

IMPEDANCE: 50 Ohms  
 FREQUENCY RANGE: 0-4 GHz  
 WORKING VOLTAGE: 500 V rms @ sea level  
 TEMPERATURE RANGE: -65°C TO 165°C  
 INSULATION RESISTANCE: 5k M Ohms min.  
 FOR RG-174, 188, 188A, 316/U, ALPHA 9174, 9316,  
 BELDEN 8216, 83269, 83284, 84316 & TIMES LMR-100A CABLE

1	SOLDER LUG	1	BRASS	NICKEL, 80μ"	007777	
2	BODY	1	BRASS	NICKEL, 80μ"		
3	INSULATOR	1	PTFE	---		
4	PRESS WASHER	1	BRASS	NICKEL, 80μ"		
5	HEX NUT	1	BRASS	NICKEL, 80μ"		
6	LOCK WASHER	1	IRON	NICKEL, 80μ"		
7	PIN		BRASS	GOLD, 3μ"		
8	FERRULE		BRASS	NICKEL, 80μ"		
9						
10						
11						
12						
13						
14						
#	DESCRIPTION	QTY	MATERIAL	FINISH	APPROVALS	DATE

UNLESS OTHERWISE SPECIFIED:  
 1. REMOVE ALL BURRS  
 2. BREAK ALL CORNERS & EDGES .005 R. MAX.  
 3. CHAMFER 1ST & LAST THREADS 45°  
 4. SURFACE ROUGHNESS 63 FINISH MIL-STD-10  
 5. DIAMETERS ON COMMON CENTERS TO BE CONCENTRIC WITHIN .002 T.I.R.  
 6. ALL DIMENSIONS ARE AFTER PLATING.

DIMENSIONS ARE IN INCHES AND [MILLIMETERS]  
 UNLESS OTHERWISE NOTED TOLERANCES ARE:  
 DECIMALS      DIAMETER  
 .xxx±.003 [.08]      .xxx±.001 [.03]  
 .xx±.005 [.13]      .xx±.003 [.08]

**RF connectors**  
 DIVISION OF RF INDUSTRIES, LTD.  
 7610 MIRAMAR RD  
 SAN DIEGO, CA 92126  
 (858) 549-6340  
 (858) 549-6345 FAX

**BNC JACK CRIMP**

BULKHEAD RECEPTACLE, FRONT MOUNT

SIZE	CABLE GROUP	DWG NO.	REV
A	B	RFB-1116-B-03	—
SCALE: NTS		CAD FILE	OUTLINE
		SHEET 1 OF 1	