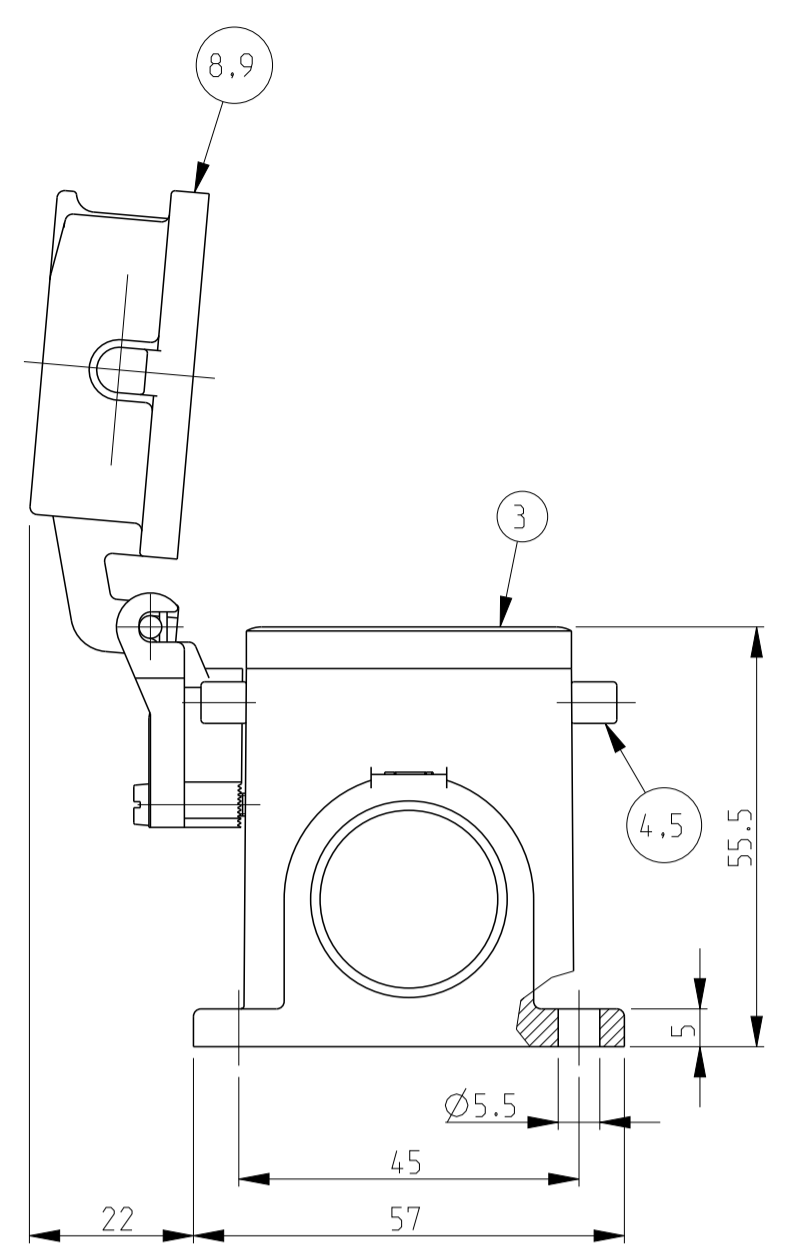
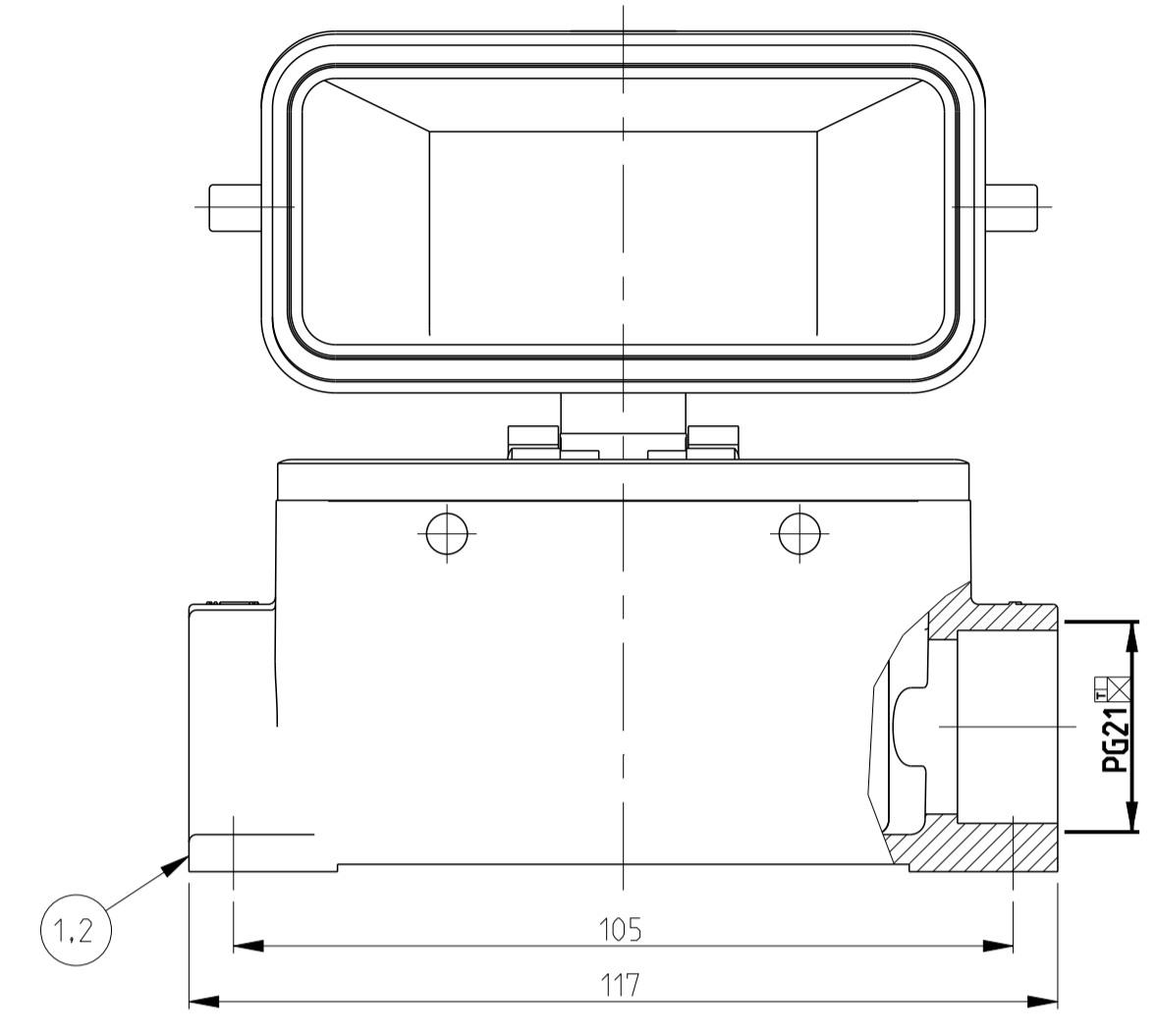
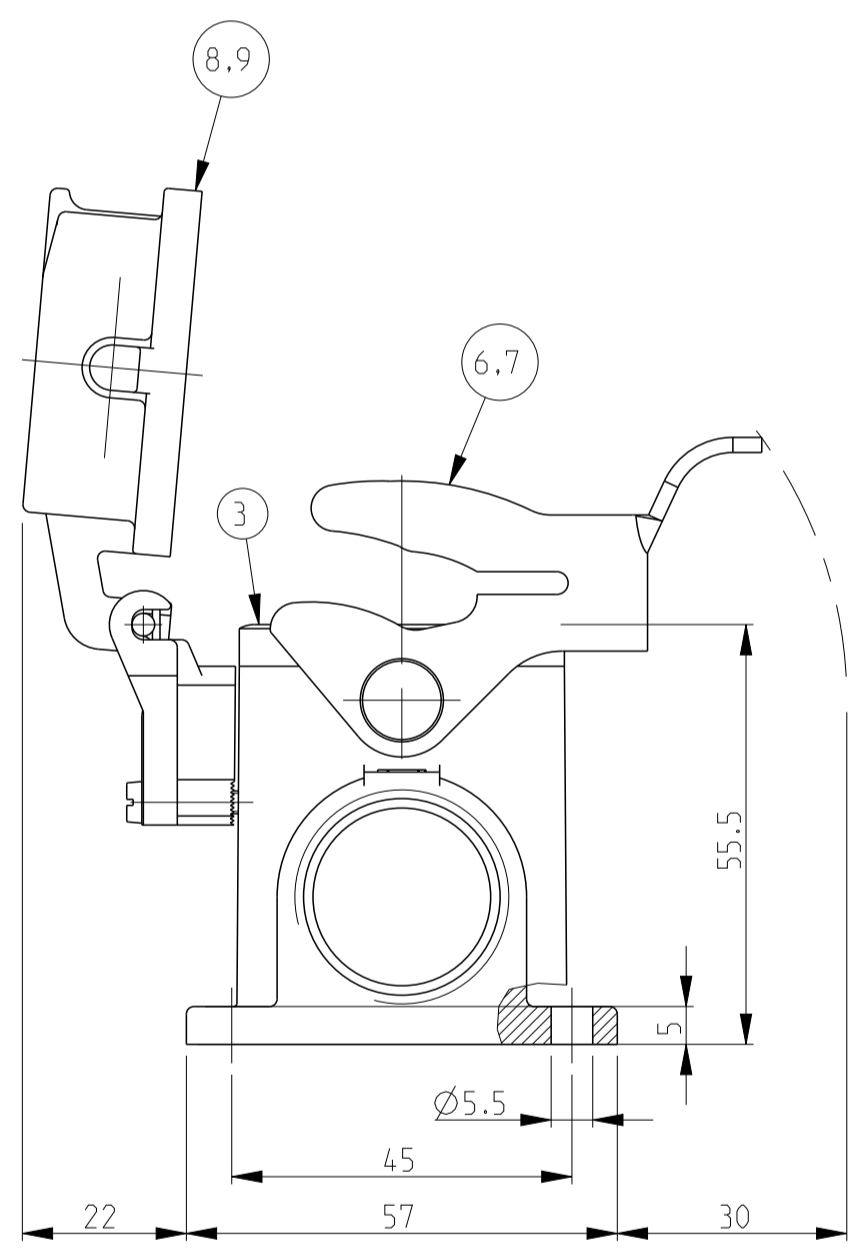
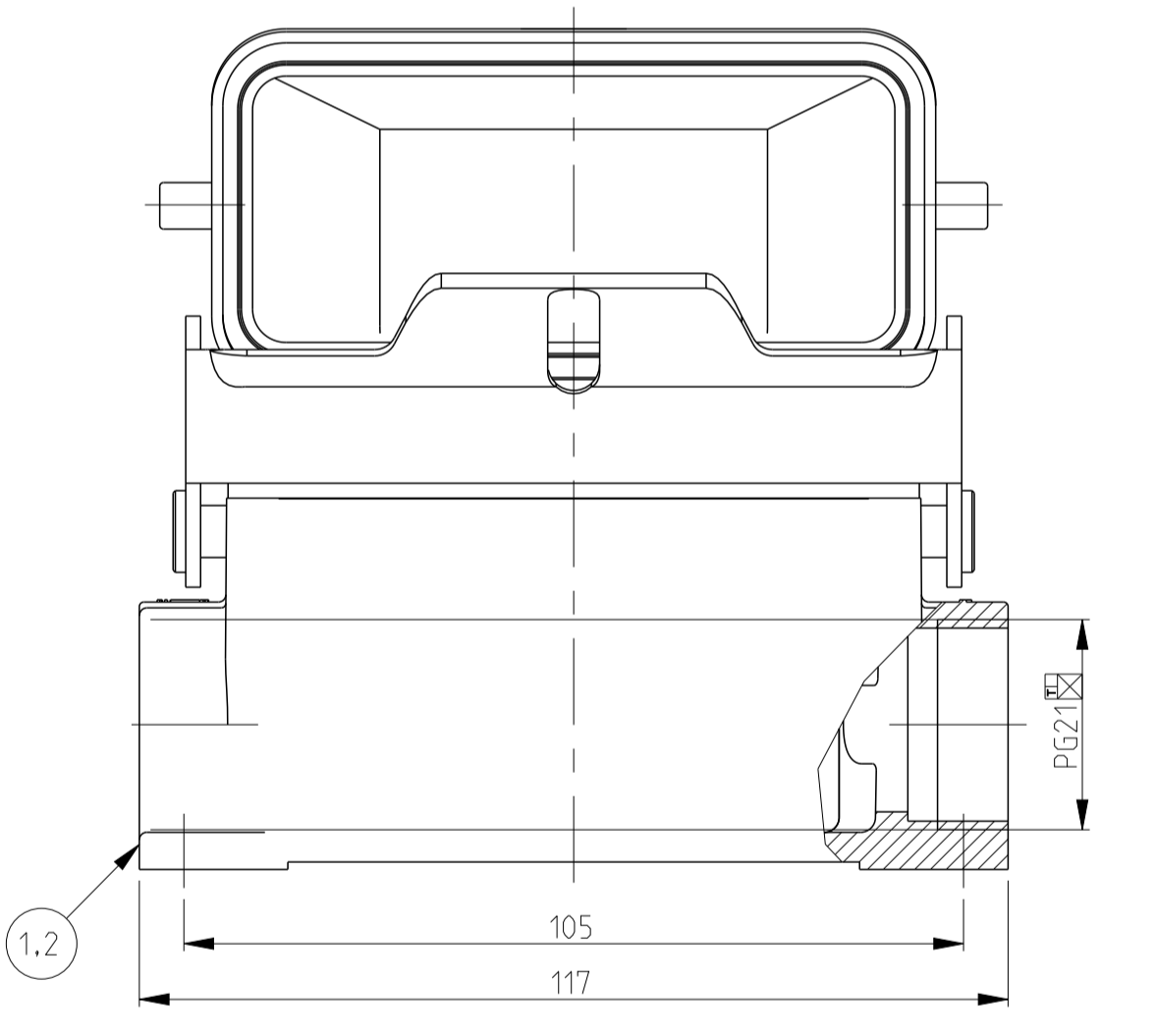


PN 1-6 & 2-6



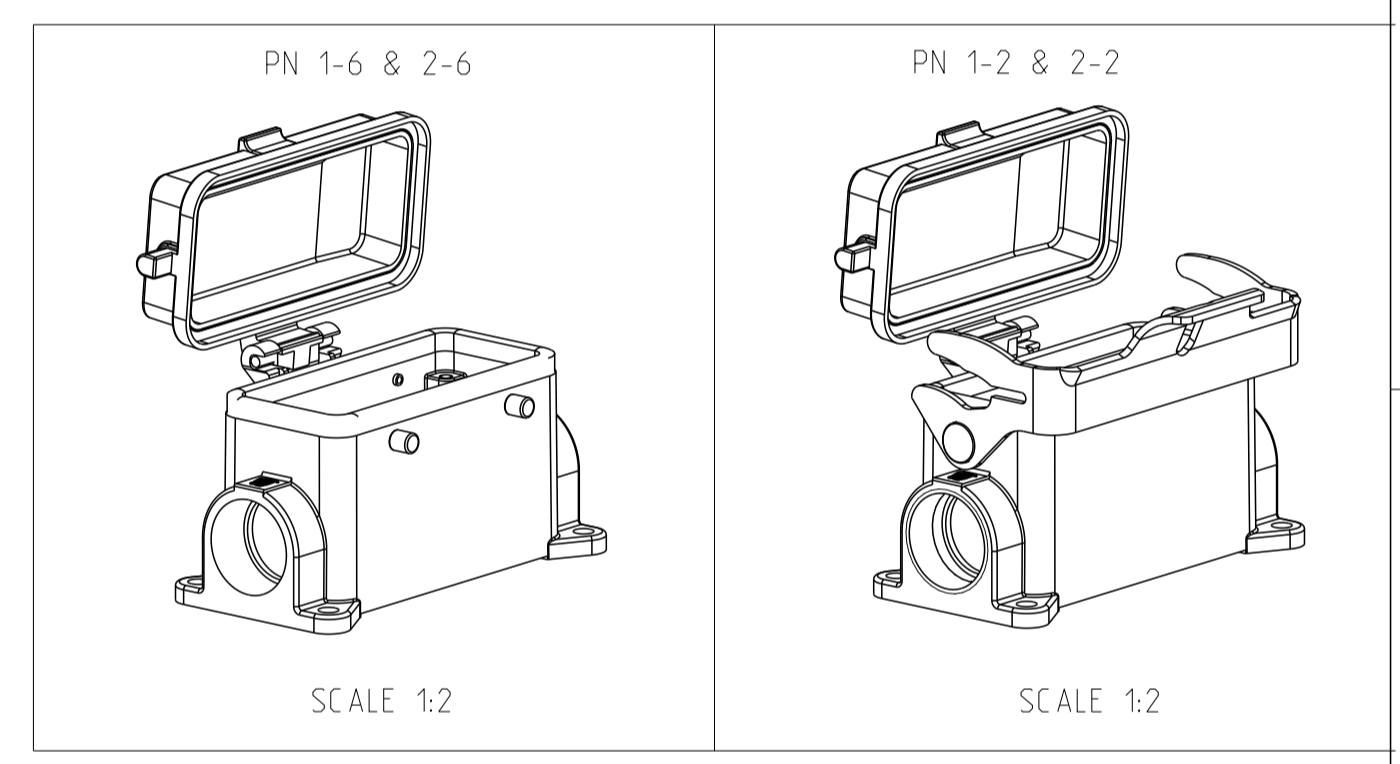
PN 1-2 & 2-2



REVISIONS				
P	LTH	DESCRIPTION	DATE	DMN APVD
A2		Released as per ECR-08-017827	16.July.2008	SP TS
A3		REVISED PER ECR-16-016768	17AUG2017	AP MKO
A4		ECR-017-013084	29MAR2018	SG MKO

NOTES.

- 1 Material:Housing:Aluminium Diecasting Alloy  
Seals:Neoprene
- 2 Surface:Varnish  
-Aluminium Oxide +Varnish Black  
-Grey
- 3 Varnish on the inside not necessary
- 4 Packaging  
Quantity 5 Pieces in a box



OBSOLETE

QTY	DESCRIPTION	MATERIAL	SURFACE	COLOR	ITEM NO	REMARKS			
1	Cover finished product HB-K	Aluminium	Aluminium oxide	Black RAL 9005	9				
1	Cover finished product HB	Aluminium		Grey RAL 7001	8				
1	LB-Side clip	Stainless steel	Blank		7				
1	LB-Side clip	Steel	Zinc plated	Blue	6				
4	VS-Clip bolt	Stainless steel	Blank		5				
4	VS-Clip bolt	Steel	Zinc plated	Blue	4				
1	Profile seal	Neoprene		Black	3				
1	Surface mounted housing side entry HB-K	Aluminium	Aluminium oxide	Black RAL 9005	2				
1	Surface mounted housing side entry HB	Aluminium		Grey RAL 7001	1				
2-2	1-2	2-6	1-6	DESCRIPTION	MATERIAL	SURFACE	COLOR	ITEM NO	REMARKS
ORDERING TEXT									
HB.16.SGD.1.21.Z									
HB-K.16.SGD.1.21.Z									
HB.16.SGD.LB.1.21.Z									
HB-K.16.SGD.LB.1.21.Z									

THIS DRAWING IS A CONTROLLED DOCUMENT. DMN: Schneider 08.05.2003  
 CHK: Schwiäger 08.05.2003

**STE** TE Connectivity

NAME: Surface mounted housing side entry HB.16.SGD.1.21.Z

PRODUCT SPEC: 108-74001.74003  
 APPLICATION SPEC: 116-74001.74004

SIZE: A1 CAGE CODE: 00779 DRAWING NO: 1102308  
 WEIGHT: - RESTRICTED TO: A4

MATERIAL: - FINISH: - TOLERANCES UNLESS OTHERWISE SPECIFIED:  
 DIMENSIONS: mm  
 0 PLC ±  
 1 PLC ±  
 2 PLC ±  
 3 PLC ±  
 4 PLC ±  
 ANGLES ±  
 FINISH ±

CUSTOMER DRAWING SCALE: 1:1 SHEET: 1 OF 1 REV: A4