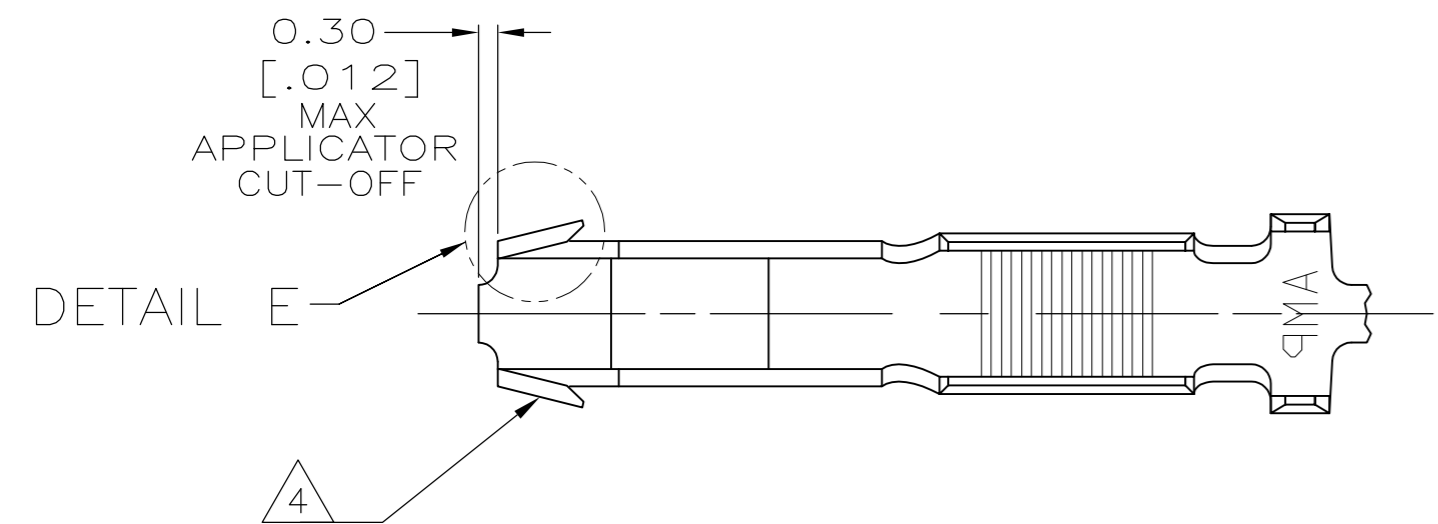


THIS DRAWING IS UNPUBLISHED. RELEASED FOR PUBLICATION
 © COPYRIGHT - By - ALL RIGHTS RESERVED.

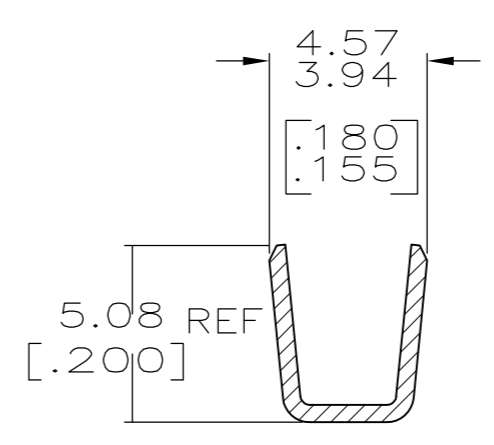
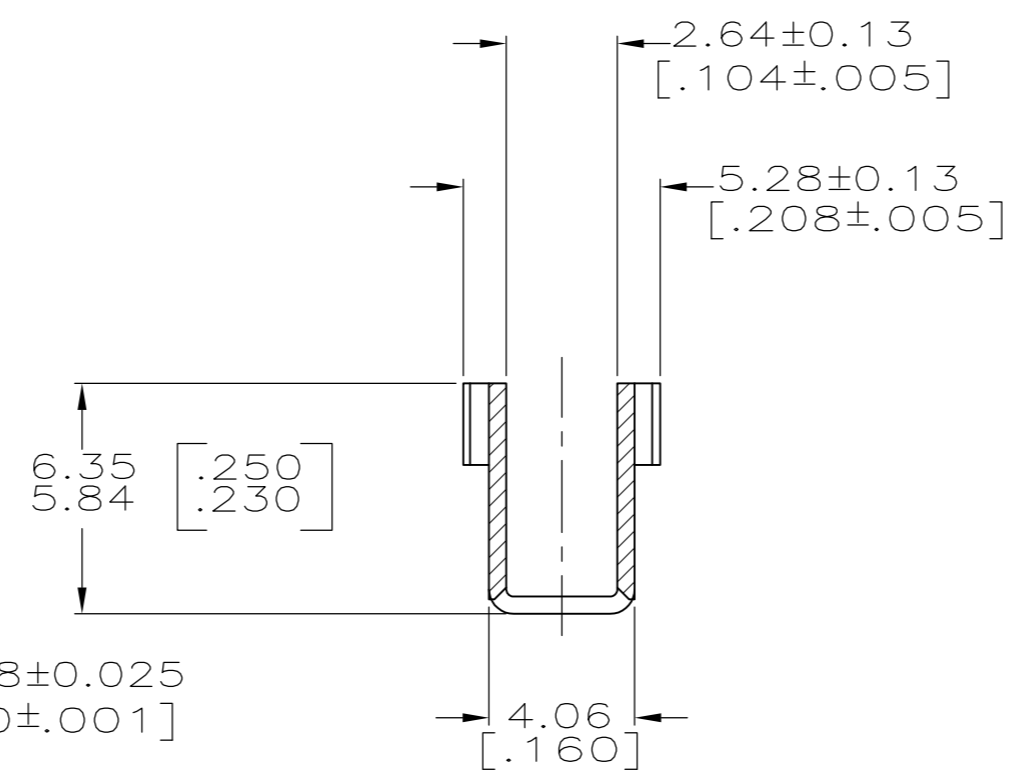
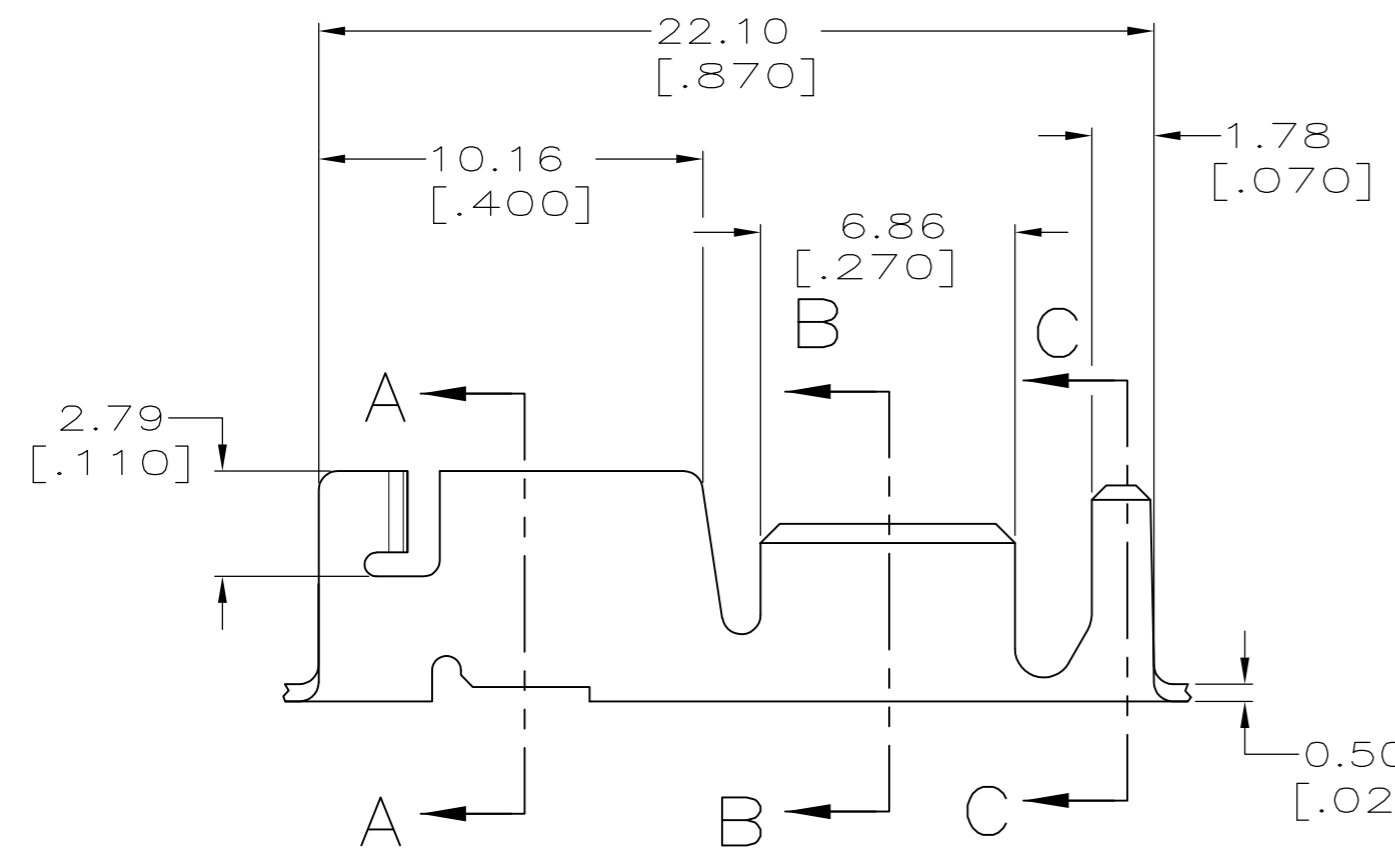
LOC	DIST	REVISIONS					
AF	50	P	LTR	DESCRIPTION	DATE	DWN	APVD
		D		REVISED PER ECR-14-006300	28AUG2014	MKD	RRP



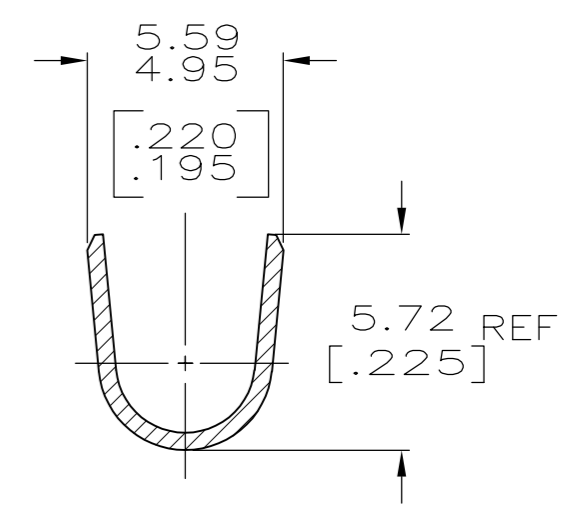
- 1 CONTINUOUS STRIP ON REELS WITH TERMINALS LOCATED ON 23.75±0.08 [.935±.003] CENTERS.
- 2 MEASURE CRIMP HEIGHT IN THIS AREA.
- 3 FORMULA TO CALCULATE CRIMP HEIGHT:

$$X = \frac{Y + 15200}{238100} \quad Y = \text{CMA}$$

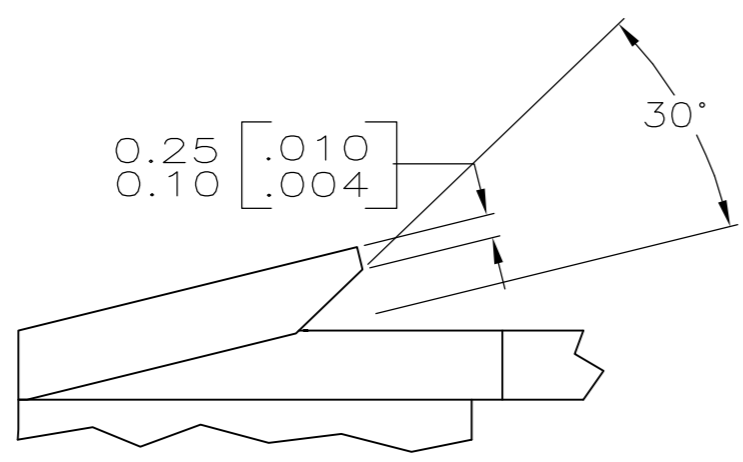
$$X = \text{CRIMP HEIGHT}$$
- 4 HIGH RETENTION FEATURE.



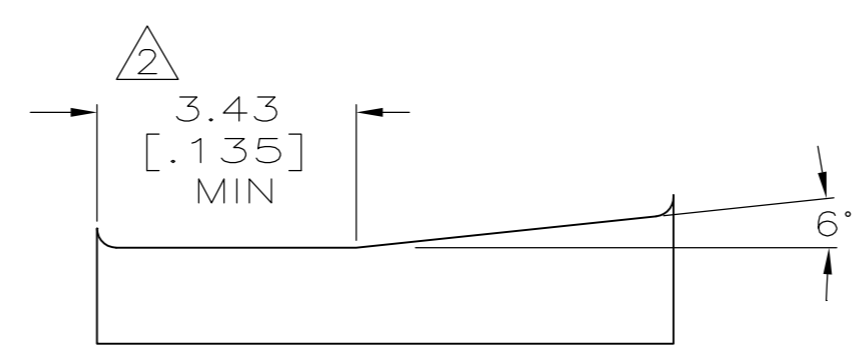
SECTION B-B



SECTION C-C



DETAIL E
SCALE 20:1



CRIMP CONFIGURATION

2.29-4.32 DIA [.090-.170]	4000-8500 CMA	1217672-1
INSULATION RANGE	WIRE RANGE	PART NUMBER

THIS DRAWING IS A CONTROLLED DOCUMENT.		DWN	JR RUTH	29JUN01		TE Connectivity		
DIMENSIONS: mm [INCHES]		CHK	G PORTA	29JUN01		NAME		
TOLERANCES UNLESS OTHERWISE SPECIFIED:		APVD	G PORTA	29JUN01		RECEPTACLE, CLUSTER PIN, AMPLIVAR, 3.18[.125] DIA		
0 PLC ± -		PRODUCT SPEC		108-2008		SIZE	CAGE CODE	DRAWING NO
1 PLC ± -		APPLICATION SPEC		114-2019	A2	00779	C=1217672	
2 PLC ± 0.25 [.010]		MATERIAL		WEIGHT	SCALE		SHEET	
3 PLC ± -		H03 TIN-BRASS		-	5:1		1 of 1	
4 PLC ± -		FINISH		CUSTOMER DRAWING	REV		D	
ANGLES ± -		POST TIN						