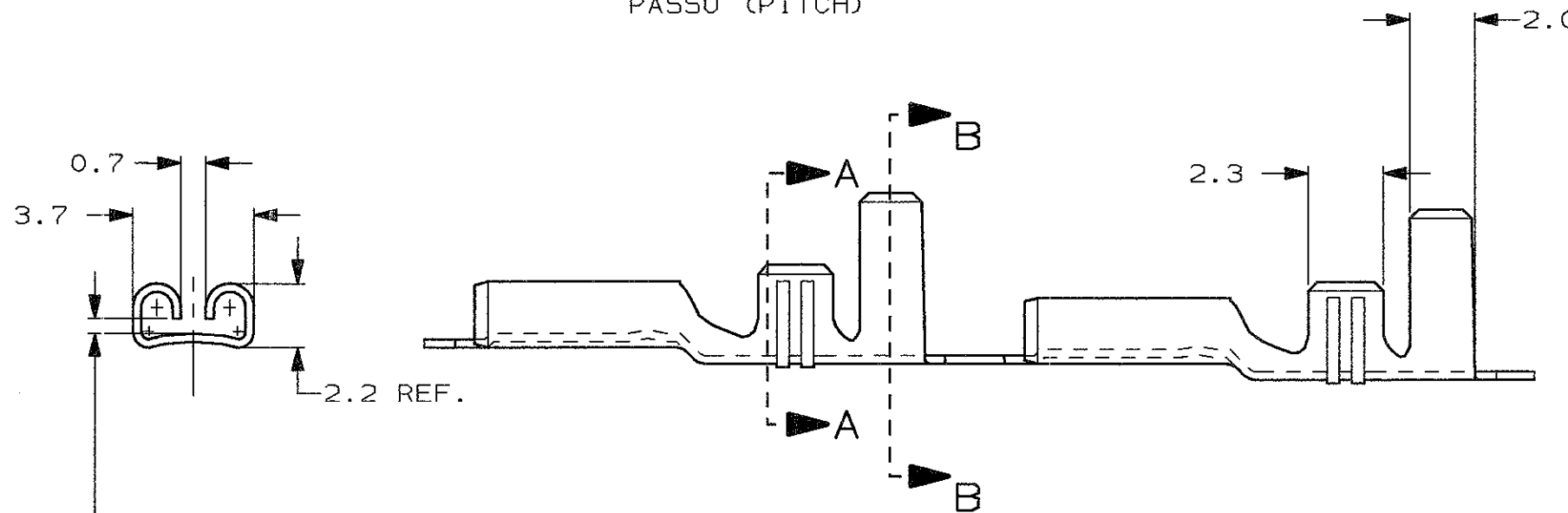
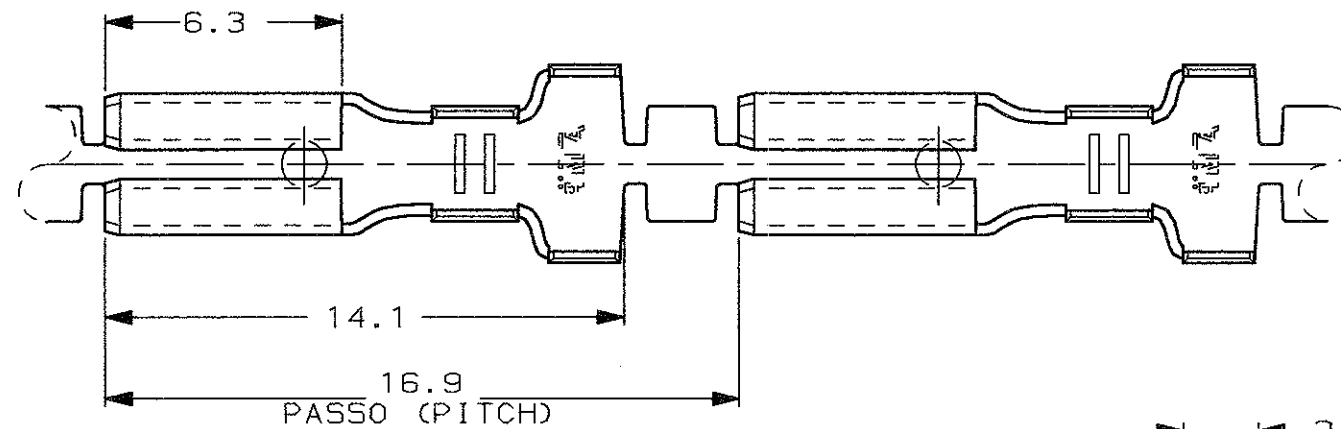


SCALA NON IMPEGNATIVA
(DO NOT SCALE)
DIMENSIONI IN
(DIMENSIONS IN) mm

METRIC

THIRD ANGLE
PROJECTION



ADATTO PER LINGUETTA
DI 0.8 mm.
(TO FIT TAB 0.8 mm.)

1) STATO DI FORNITURA - SCALA 1:1
(SUPPLY CONDITION - SCALE 1:1)

16.9
PITCH



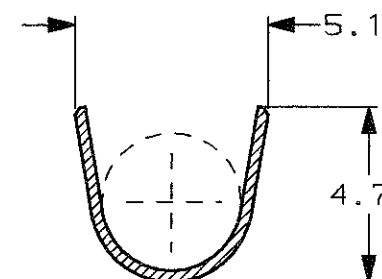
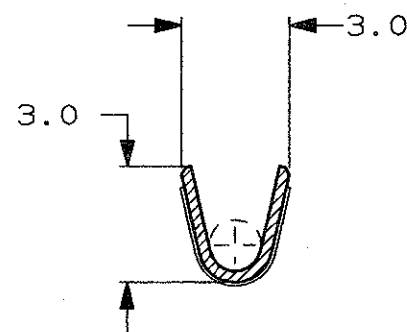
SENSO DI USCITA
DEL TERMINALE
DALLA BOBINA
(DIRECTION OFF
TOP OF REEL)

2) SPECIFICA DI PRODOTTO 108-20019
(PRODUCT SPEC. 108-20019)

3) PER LE VERSIONI IN PEZZI SCIOLTI
VEDERE DISEGNO 181551
(FOR LOOSE PIECE VERSION SEE DRAWING 181551).

SEZIONE A-A
(SECTION A-A)

SEZIONE B-B
(SECTION B-B)



NOTE	STAGNATO (TIN PLATED)	OTTONE (BRASS)	180457-2	AH
	FINITURA / COLORE (FINISH / COLOUR)	MATERIALE (MATERIAL)	NUMERO (AMP P/N)	REV.

CUSTOMER DWG. FOR REFERENCE ONLY DISEGNO PER CLIENTE SOLO PER RIFERIMENTO

THIS DRAWING IS UNPUBLISHED RELEASE FOR PUBLICATION 19
© COPYRIGHT 19 BY AMP INCORPORATED, HARRISBURG, PA. ALL INTERNATIONAL RIGHT RESERVED. AMP PRODUCTS MAY BE COVERED BY U.S. AND FOREIGN PATENT AND/OR PATENT PENDING

TOLLERANZE: SE NON DIVERSAMENTE SPECIFICATO (TOLERANCES: UNLESS OTHERWISE SPECIFIED)	DIAM. ISOLANTE (INS. DIA. RANGE)	RANGO FILO (WIRE RANGE) mm ²	SCALA (SCALE)
±0.4	1.5-3.6	0.5-1.5	5:1

ANGOLI (ANGLES) ± 2°

DIS. H. YAALI (DR.) 18 DEC 2000 DESCRIZIONE (DESCRIPTION) FASTON® Connector .110" sr. REC. CONTACT

CONT. C. TARTARI (CHK) -	LOC. SIZE	NUMERO (DWG NO)	REV.	FOGLIO (SHEET)
	I A3	C-180457	AH 1	DI (OF) 1

REV.	REVISIONI (REVISION RECORD)	H.Y.	DESIGN DATE
AH	OBSOLETE PARTS & REDRAWN ET00-0307-98		

DISTRIBUZIONE (PRINT DIST.)