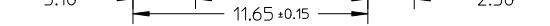
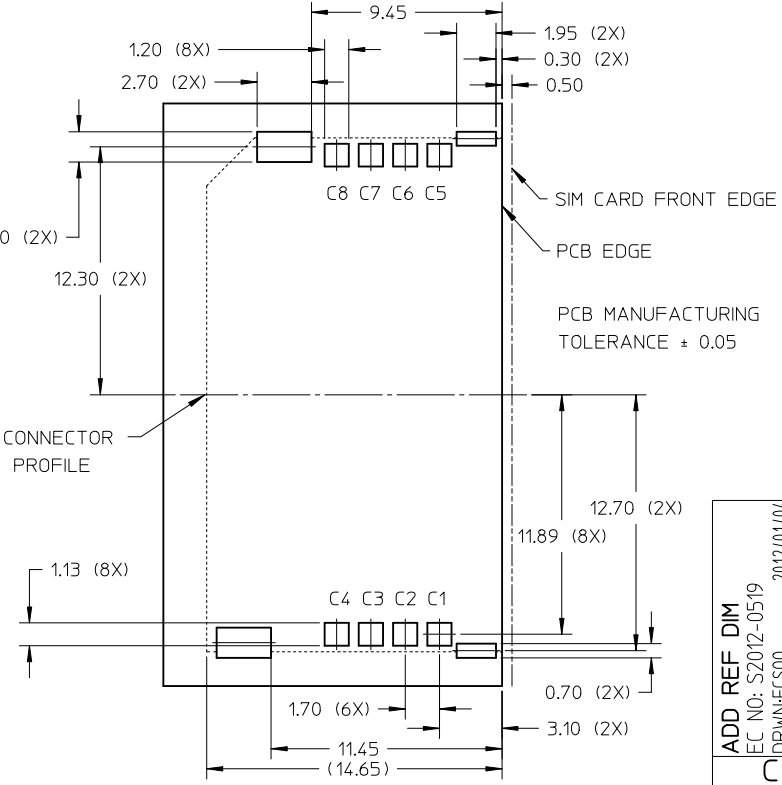


P/N	78558-0001	78558-1000
DIM H	1.80	2.00



NOTES:

- MATERIALS:
HOUSING: LIQUID CRYSTAL POLYMER, 30~45% GLASS-FILLED/MINERAL UL 94V-0, COLOR: BLACK
TERMINAL: PHOSPHOR BRONZE, 0.12MM THICKNESS REF.
SHELL: STAINLESS STEEL 0.20mm THICKNESS REF.
- FINISHES
TERMINAL: 0.30 MICRON MIN. GOLD ON CONTACT AND 1.27 MICRON MIN. TIN ON SOLDER TAIL OVER 1.27 MICRON MIN. NICKEL UNDERPLATE
SHELL: 0.0254 MICRON MIN. GOLD OVER 1.27 MICRON MIN. NICKEL UNDERPLATE
- PRODUCT SPECIFICATION: PS-78558-001
- PACKAGING SPECIFICATION: PK-78558-001
- NON-FUNCTIONAL CORING ARE SUBJECTED TO CHANGE WITHOUT NOTICE.
- DATE CODE: XX XX X
└── DAY
└── WEEK
└── YEAR

ADD REF DIM EC NO: S2012-0519 DRW: FCS00 CHKD: JTAN02 APPR: KHL IM	DESCRIPTION REV	QUALITY SYMBOLS		GENERAL TOLERANCES (UNLESS SPECIFIED)		DIMENSION STYLE		SCALE	DESIGN UNITS	THIRD ANGLE PROJECTION	
		$F_A=0$	$F_B=0$	$F_C=0$	$F_D=0$	mm	INCH	MM ONLY	NTS	METRIC	
				4 PLACES	± ---	± ---	DRAWN BY	DATE	TITLE		
				3 PLACES	± ---	± ---	SCHONG	2009/10/14	SIDE ENTRY SIM CONNECTOR WITH GUIDE RAILS		
				2 PLACES	± 0.10	± ---	CHECKED BY	DATE	MOLEX INCORPORATED		
				1 PLACE	± ---	± ---	KHL IM	2010/01/07	DOCUMENT NO. SD-78558-001		
				ANGULAR ± 3 °			APPROVED BY	DATE	SHEET NO. 1 OF 1		
				DRAFT WHERE APPLICABLE MUST REMAIN WITHIN DIMENSIONS			BOKOK	2010/04/16	THIS DRAWING CONTAINS INFORMATION THAT IS PROPRIETARY TO MOLEX INCORPORATED AND SHOULD NOT BE USED WITHOUT WRITTEN PERMISSION		
							MATERIAL NO.				
							SIZE				
							A3				