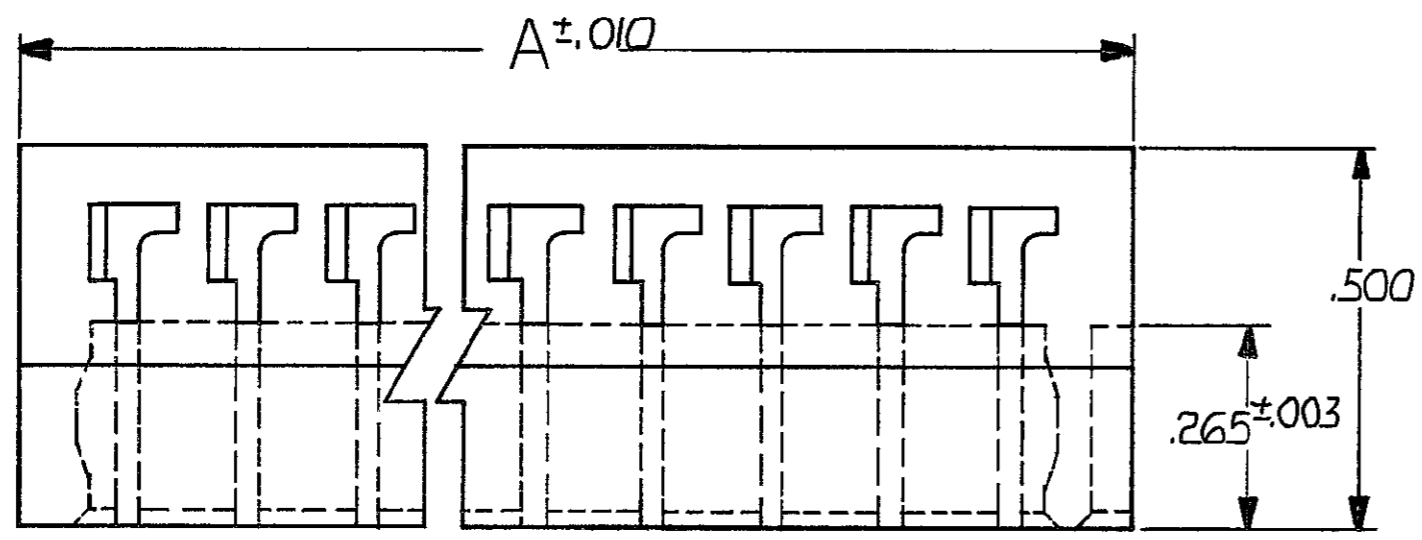


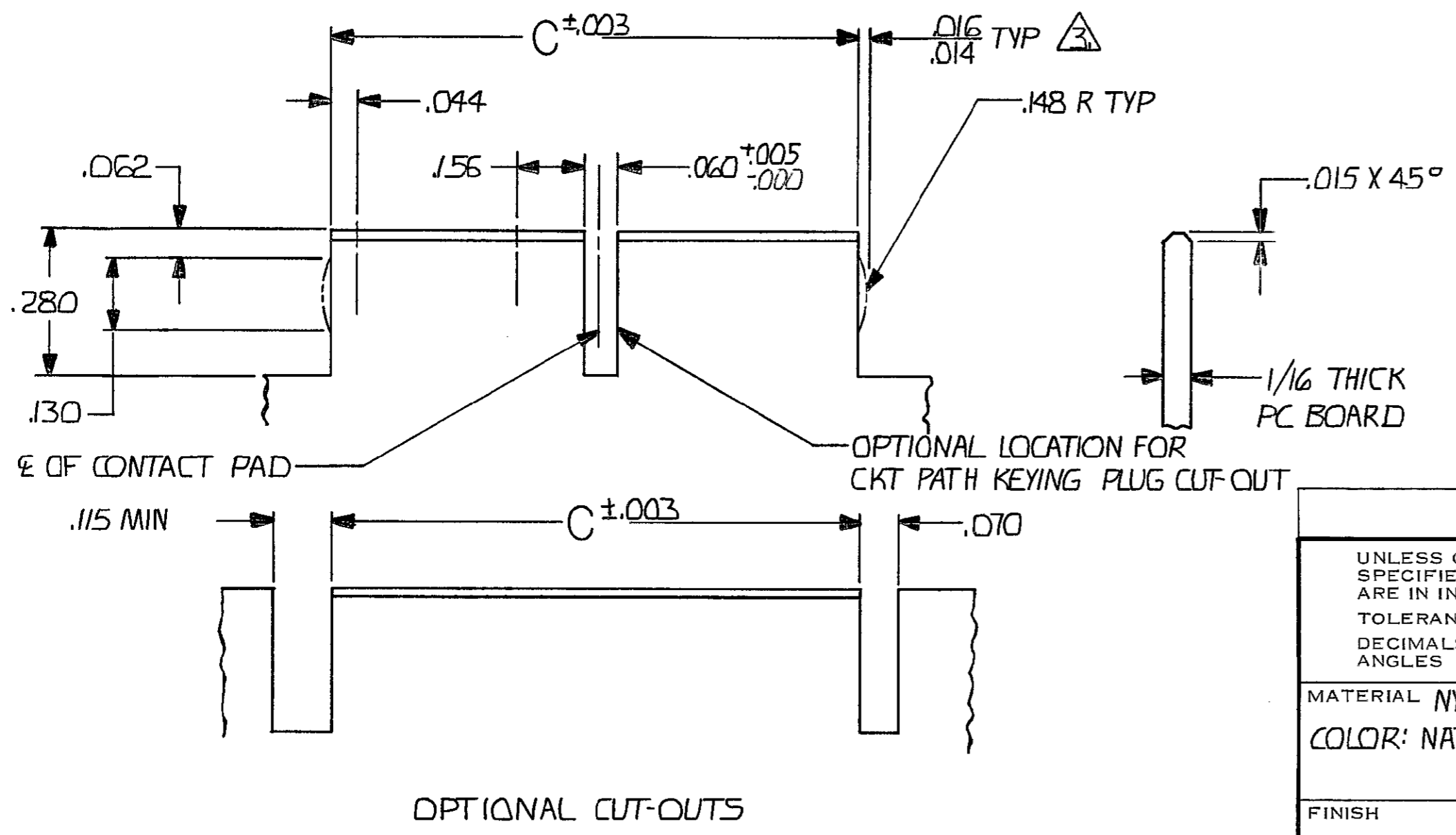
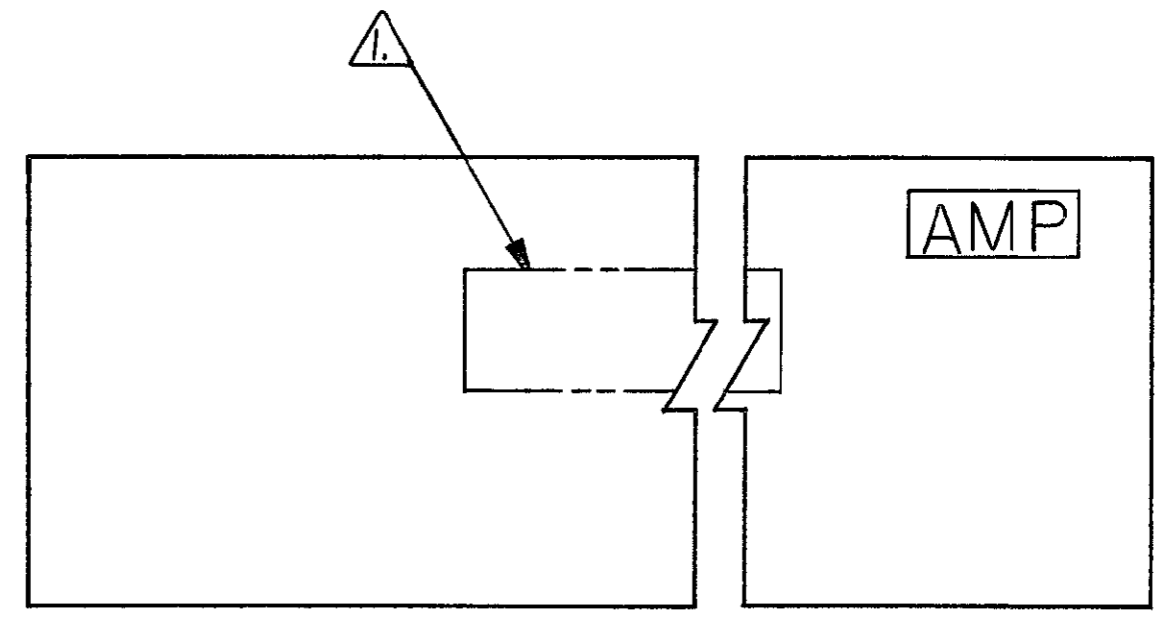
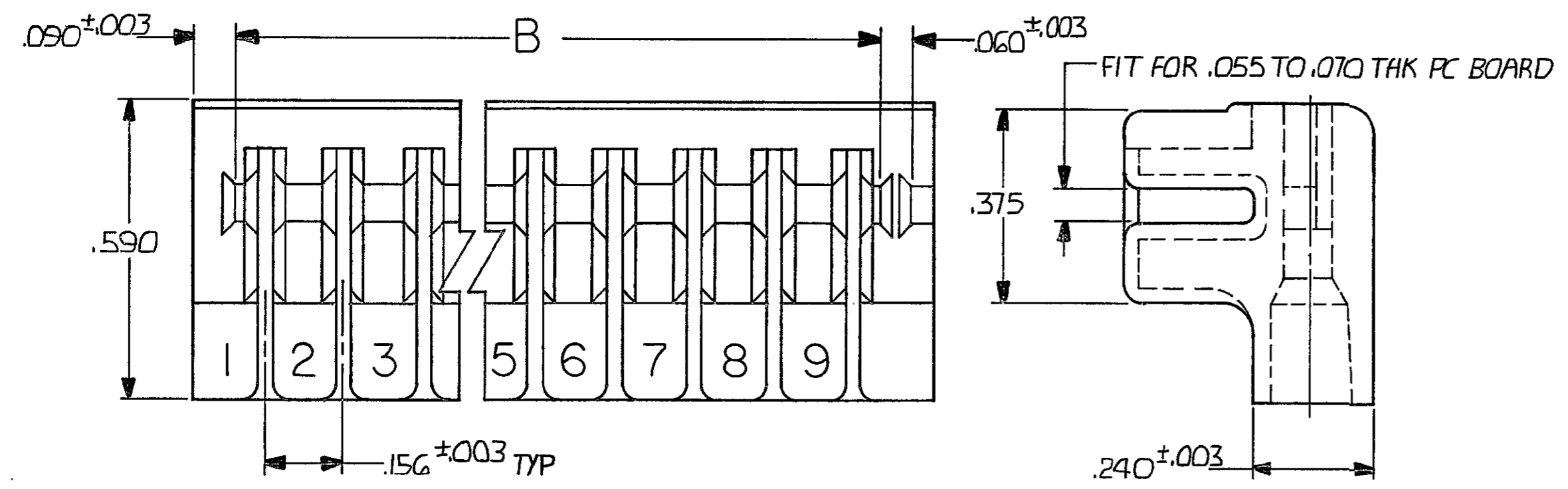
© COPYRIGHT 1976 BY AMP INCORPORATED, HARRISBURG, PA. ALL INTERNATIONAL RIGHTS RESERVED. AMP INCORPORATED PRODUCTS COVERED BY U. S. AND FOREIGN PATENTS AND/OR PATENTS PENDING.

UNPUBLISHED SOP. NOT TO BE REPRODUCED NOR PUBLISHED WITHOUT WRITTEN PERMISSION OF AMP INCORPORATED.

| REVISIONS | | | | | |
|-----------|------|-----|--------------------------------|---------|-----------|
| P/F | ZONE | LTR | DESCRIPTION | DATE | APPROVED |
| ✓ | | E | OBSOLETE -11/0010-1308-93-2293 | 11-93 | PB |
| ✓ | | F | REV PER 0010-0913-94 | 9/1/94 | SS |
| ✓ | | G | REV PER 0010-1143-95 | 11-95 | PB |
| | | H | REV PER EC 0G3C-233-01 | 02OCT01 | MM |
| | | H1 | REVISED PER ECO-09-026346 | NOV09 | AEG |
| | | H2 | REVISED PER ECO-20-006229 | KRJS | 21MAY2020 |



- 1. "AMP" PART NUMBER AND DATE CODE MARKED THIS AREA. DATE CODE (OPTIONAL) OR MOLDED.
- 2. REFER TO 60215 583284 AND 530501 FOR TERMINALS.
- 3. THE RETAINING DIMPLES ARE OPTIONAL IN BOTH CUT-OUTS.
- 4. CONTACT CAVITIES ENLARGED FOR 18 TO 16 AWG LEADS WITH MAXIMUM INSULATION DIAMETER OF .130.
- 5. IDENTIFICATION MARKING OMITTED.
- 6. OBSOLETE PARTS: OBSOLETE CIS STREAMLINING PER D.RENAUD/D.SINISI



| | | | | | | |
|----------|----------|-------|-------|-------|----|------------|
| 5 | OBSOLETE | 2.741 | 2.754 | 2.964 | 18 | 1-530853-8 |
| OBSOLETE | 5 | 4.00 | .414 | .624 | 3 | 1-530853-1 |
| OBSOLETE | | 3.365 | 3.378 | 3.528 | 22 | 530853-9 |
| 6 | OBSOLETE | 2.741 | 2.754 | 2.964 | 18 | 8 |
| | | 2.272 | 2.286 | 2.496 | 15 | 7 |
| 6 | OBSOLETE | 2.117 | 2.130 | 2.340 | 14 | 6 |
| 6 | OBSOLETE | 1.805 | 1.818 | 2.028 | 12 | 5 |
| | | 1.337 | 1.350 | 1.560 | 9 | 4 |
| | | .868 | .882 | 1.092 | 6 | 3 |
| OBSOLETE | | .712 | .726 | .936 | 5 | 2 |
| | | 400 | 414 | 624 | 3 | 530853-1 |

| | | | |
|--|-------------------------------------|--------------------------------|------------------------------------|
| UNLESS OTHERWISE SPECIFIED DIMENSIONS ARE IN INCHES. TOLERANCES ON: DECIMALS ±.005 ANGLES ± | CONTRACT NO | STE TE Connectivity | |
| | DR <i>Robert Wolber 10-13-76</i> | | |
| MATERIAL NYLON COLOR: NATURAL | CHK <i>Bushley 10-13-76</i> | APPD <i>Wolber 10-13-76</i> | APPD <i>K. Shawman 10-13-76</i> |
| FINISH | OTHER APPD | DSGN APPD | APPD |
| SIZE C | | CODE IDENT NO 00779 | DRAWING NO 530853 |
| SCALE 4-1 | | REV H2 | |
| SHEET 10F1 | | PART NO | |

530853