


TT-ST-M-2-PE-24DC

Order No.: 2858904

<http://eshop.phoenixcontact.de/phoenix/treeViewClick.do?UID=2858904>

TERMITRAB, spring-cage modular terminal block with integrated surge protection and disconnect knives, for assembly on NS 35/7.5, voltage U_N 24 V DC, terminal width: 6.2 mm, cover width: 2.2 mm

| Commercial data | |
|--------------------------|--|
| GTIN (EAN) |  4 017918 938024 |
| sales group | J301 |
| Pack | 10 pcs. |
| Customs tariff | 85363030 |
| Catalog page information | Page 102 (TT-2009) |

Product notes

WEEE/RoHS-compliant since:
06/28/2006

<http://www.download.phoenixcontact.com>
Please note that the data given here has been taken from the online catalog. For comprehensive information and data, please refer to the user documentation. The General Terms and Conditions of Use apply to Internet downloads.

| Technical data | |
|------------------------------------|--------|
| General | |
| Housing material | PA 6.6 |
| Inflammability class acc. to UL 94 | V2 |
| Color | black |

| | |
|--|---|
| Standards for air and creepage distances | VDE 0110-1 |
| | IEC 60664-1: 1992-10 |
| Surge voltage category | III |
| Pollution degree | 2 |
| Total surge current (8/20) μ s | 10 kA |
| Total surge current (10/350) μ s | 2 kA |
| Ambient temperature (operation) | -40 °C ... 85 °C |
| Mounting type | DIN rail: 35 mm |
| Design | Double-level terminal block with disconnect knife |
| Number of positions | 2 |
| Degree of protection | IP20 |
| Direction of action | Line-Line & Line-Earth Ground |
| Width | 6.20 mm |
| Height | 63.50 mm |
| Length | 100.00 mm |

Protective circuit

| | |
|--|-----------------|
| IEC category | C1 |
| | C2 |
| | C3 |
| | D1 |
| VDE requirement class | C1 |
| | C2 |
| | C3 |
| | D1 |
| Nominal voltage U_N | 24 V DC |
| Maximum continuous operating voltage U_C | 30 V DC |
| | 21 V AC |
| Maximum continuous voltage U_C (wire-wire) | 30 V DC |
| | 21 V AC |
| Nominal current I_N | 350 mA (45°C) |
| Operating effective current I_C at U_C | $\leq 10 \mu$ A |
| Ground conductor current I_{PE} | $\leq 2 \mu$ A |
| Nominal discharge surge current I_n (8/20) μ s (Core-Core) | 5 kA |
| Nominal discharge surge current I_n (8/20) μ s (Core-Earth) | 5 kA |

| | |
|--|------------------------------------|
| Total surge current (8/20) μ s | 10 kA |
| Max. discharge surge current I_{max} (8/20) μ s maximum (Core-Core) | 5 kA |
| Max. discharge surge current I_{max} (8/20) μ s maximum (Core-Earth) | 5 kA |
| Nominal pulse current I_{an} (10/1000) μ s (Core-Core) | 100 A |
| Nominal pulse current I_{an} (10/1000) μ s (Core-Earth) | 200 A (in total) |
| Lightning test current (10/350) μ s, peak value I_{imp} | 1 kA (per path) |
| Output voltage limitation at 1 kV/ μ s (Core-Core) spike | ≤ 40 V |
| Output voltage limitation at 1 kV/ μ s (Core-Earth) spike | ≤ 600 V |
| Output voltage limitation at 1 kV/ μ s (Core-Core) static | ≤ 40 V |
| Output voltage limitation at 1 kV/ μ s (Core-Earth) static | ≤ 600 V |
| Residual voltage at I_{n1} (conductor-conductor) | ≤ 40 V |
| Protection level U_p (Core-Core) | ≤ 60 V (C2 (10 kV/5 kA)) |
| | ≤ 40 V (stat.) |
| Protection level U_p (Core-Earth) | ≤ 600 V (C2 (10 kV/5 kA)) |
| Response time t_A (Core-Core) | ≤ 1 ns |
| Response time t_A (Core-Earth) | ≤ 100 ns |
| Input attenuation aE, sym. | 1 dB (< 400 kHz) |
| Cut-off frequency f_g (3 dB), sym. in 50 Ohm system | 3 MHz |
| Cut-off frequency f_g (3 dB), sym. in 150 Ohm system | 1 MHz |
| Capacity (Core-Core) | 4 nF |
| Capacity (Core-Earth) | 2 pF |
| Resistance in series | 6.6 Ω ± 20 % (per path) |
| | 6.6 Ω |
| Max. required back-up fuse | 370 mA |
| Surge carrying capacity in acc. with IEC 61643-21 (Core-Core) | C2 (10 kV/5 kA) |
| Surge carrying capacity in acc. with IEC 61643-21 (Core-Earth) | C2 (10 kV/5 kA) |
| | D1 (1 kA) |

Connection data

| | |
|--|------------------------|
| Type of connection | Spring-cage connection |
| Connection type IN | Spring-cage |
| Connection type OUT | Spring-cage |
| Conductor cross section stranded min. | 0.5 mm ² |
| Conductor cross section stranded max. | 2.5 mm ² |
| Conductor cross section solid min. | 0.5 mm ² |
| Conductor cross section solid max. | 4 mm ² |
| Conductor cross section AWG/kcmil min. | 24 |
| Conductor cross section AWG/kcmil max | 12 |

Connection, protective circuit

| | |
|-----------------------|--------------|
| Standards/regulations | IEC 61643-21 |
|-----------------------|--------------|

Certificates / Approvals



Certification GOST

Accessories

| Item | Designation | Description |
|----------------|-------------------------|---|
| General | | |
| 2858894 | TT-D-STTCO-BK | End cover for TERMITRAB TT-ST-..., width: 2.2 mm, color: Black |
| Marking | | |
| 1051993 | B-STIFT | Marker pen, for manual labeling of unprinted Zack strips, smear-proof and waterproof, line thickness 0.5 mm |
| 0808749 | ZBF 6,LGS:FORTL.ZAHLEN | Zack marker strip, flat, printed horizontally: 10-section, with the numbers 1 - 10, 11 - 20, and so on up to 91 - 100, color: white |
| 0808736 | ZBF 6/WH-100:UNBEDRUCKT | Zack strip, flat, unprinted: 10-section, for individual labeling with M-PEN or ZBF-T, large batch, sufficient for labeling 1000 terminal blocks, color: white |
| 0808710 | ZBF 6:UNBEDRUCKT | Zack strip, flat, unprinted: 10-section, for individual labeling with M-PEN or ZBF-T, sufficient for 100 terminal blocks, color: white |

Additional products

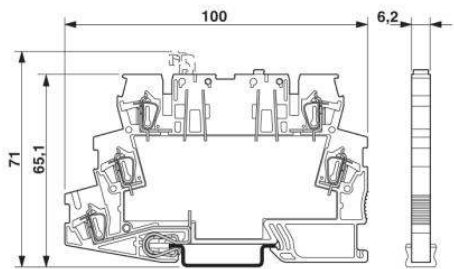
| Item | Designation | Description |
|------|-------------|-------------|
|------|-------------|-------------|

General

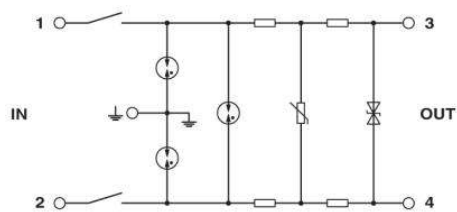
| | | |
|---------|---------------|--|
| 2858894 | TT-D-STTCO-BK | End cover for TERMITRAB TT-ST-..., width: 2.2 mm, color: Black |
|---------|---------------|--|

Diagrams/Drawings

Dimensioned drawing



Circuit diagram



Address

PHOENIX CONTACT Deutschland GmbH
Flachmarktstr. 8
32825 Blomberg, Germany
Phone +49 5235 3 12000
Fax +49 5235 3 41200
<http://www.phoenixcontact.de>



© 2011 Phoenix Contact
Technical modifications reserved;