

Housing - HC-ADV-B24-HHWH-1TGM32-PL - 1404235

Please be informed that the data shown in this PDF Document is generated from our Online Catalog. Please find the complete data in the user's documentation. Our General Terms of Use for Downloads are valid (<http://download.phoenixcontact.com>)



HEAVYCON ADVANCE B24 sleeve housing, with screw locking (Allen screw), plastic, height: 100 mm, with 1 x M32 thread, straight cable outlet

Product Features

- Integrated screw connection
- Lower costs than metal version
- Can also be used without panel mounting base
- Labeling option using 9 x 20 mm marking label
- Low weight
- Lower risk of condensation
- Both contact insert PE sheets are connected by means of a metal frame integrated in the sleeve housing
- Capacitive PE, even when connected at an angle
- Completely corrosion-resistant
- Halogen-free plastic
- Impact test according to IK 08



Key commercial data

| | |
|--------------------------------------|-----------|
| Packing unit | 1 1 |
| Weight per Piece (excluding packing) | 200.0 GRM |
| Custom tariff number | 85366990 |
| Country of origin | Germany |

Technical data

Dimensions

| | |
|------------------------|--------|
| Height | 95 mm |
| Width | 57 mm |
| Length | 152 mm |
| Wrench size, union nut | 30 mm |

Housing - HC-ADV-B24-HHWH-1TGM32-PL - 1404235

Technical data

Dimensions

| | |
|-------------------------------|-----------------|
| External cable diameter | 11 mm ... 21 mm |
| Length of the assembly cutout | 112 mm |
| Width of the assembly cutout | 35 mm |

Ambient conditions

| | |
|----------------------------------|-------------------|
| Degree of protection for housing | IP65 |
| | IP67 |
| Ambient temperature (operation) | -40 °C ... 100 °C |

General

| | |
|---|--|
| Note | For contact inserts HC-B24, BB46, D64, DD108, HV10/16, M |
| Design | B24 |
| Housing type | Sleeve housings |
| Color | black |
| Locking type | Screw locking |
| Torque | 3 Nm (Locking screw) |
| Fixing screws | M6 (screw head: 5 mm Allen screw) |
| No. of cable exits | 1 |
| Cable exit | Straight |
| Screw connection | With |
| Type of the screw connection | 1x M32 |
| Housing material | Polyamide |
| Seal material | NBR |
| Cable seal material | NBR |
| Material lock | High-grade steel |
| Material of locking screw | High-grade steel |
| Inflammability class according to UL 94 | V0 |
| Assembly instructions | M6 locking screw, with 5 mm Allen screw head |

Classifications

eCl@ss

| | |
|------------|----------|
| eCl@ss 4.0 | 27140816 |
| eCl@ss 4.1 | 27140816 |
| eCl@ss 5.0 | 27143424 |
| eCl@ss 5.1 | 27143424 |
| eCl@ss 6.0 | 27143424 |
| eCl@ss 7.0 | 27440209 |

Housing - HC-ADV-B24-HHWH-1TGM32-PL - 1404235

Classifications

eCl@ss

| | |
|------------|----------|
| eCl@ss 8.0 | 27440209 |
|------------|----------|

ETIM

| | |
|----------|----------|
| ETIM 3.0 | EC000516 |
| ETIM 4.0 | EC000437 |
| ETIM 5.0 | EC000437 |

UNSPSC

| | |
|---------------|----------|
| UNSPSC 6.01 | 31261502 |
| UNSPSC 7.0901 | 31261502 |
| UNSPSC 11 | 31261502 |
| UNSPSC 12.01 | 31261502 |
| UNSPSC 13.2 | 31261502 |

Accessories

Accessories

Device marking

Snap-in markers - US-EMP (20X9) - 0829439



Snap-in markers, Card, white, Unlabeled, Can be labeled with: THERMOMARK CARD PLUS, THERMOMARK CARD, Mounting type: Snapped into marker carrier, Lettering field: 20 x 9 mm

Mounting material

Screw - HC-B-TMS-ERSSCHR-IMB - 1409244



Replacement locking screw, M6, stainless steel, for HEAVYCON-ADVANCE housing, HC-B...TMS...EEE design, 5 mm Allen screw

Panel mounting flange

Housing - HC-ADV-B24-HHWH-1TGM32-PL - 1404235

Accessories

Mounting flange - HC-B-AF - 1686533



Panel mounting flange for HEAVYCON-ADVANCE TMS housing with screw locking

Mounting flange - HC-B-AF-SET - 1604638



Panel mounting flange for screw locking, set comprising 2 panel mounting flanges with 4 self-tapping Torx® head screws and 4 fan-type washers

Screwdriver tools

Screwdriver - SF-M BH - 1212070



Bit screwdriver, with 1/4" quick-action chuck, handle length 119 mm, 2-component handle, with non-slip grip, suitable for bits according to DIN 3126-C 6.3 and E 6.3/ISO 1173, magnetic

Screwdriver - SF-BIT-HEXB 5-89 - 1208911

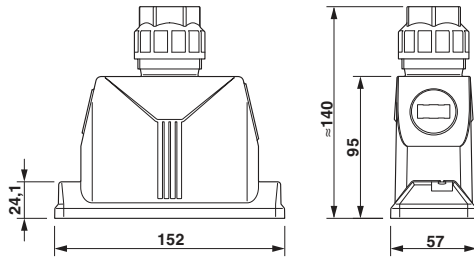


Screw bit, hexagonal with ball head, E6.3-1/4" drive, size: Hex 5 x 89 mm, hardened, suitable for holder according to DIN 3126-F 6.3/ISO 1173

Drawings

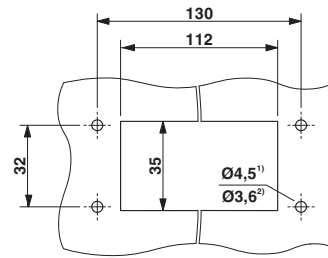
Housing - HC-ADV-B24-HHWH-1TGM32-PL - 1404235

Dimensioned drawing



Dimensional drawing

Dimensioned drawing



Mounting cutout

- 1) when a standard M4 screw is used
- 2) when self-tapping screws are used (Torx® 20, M4)