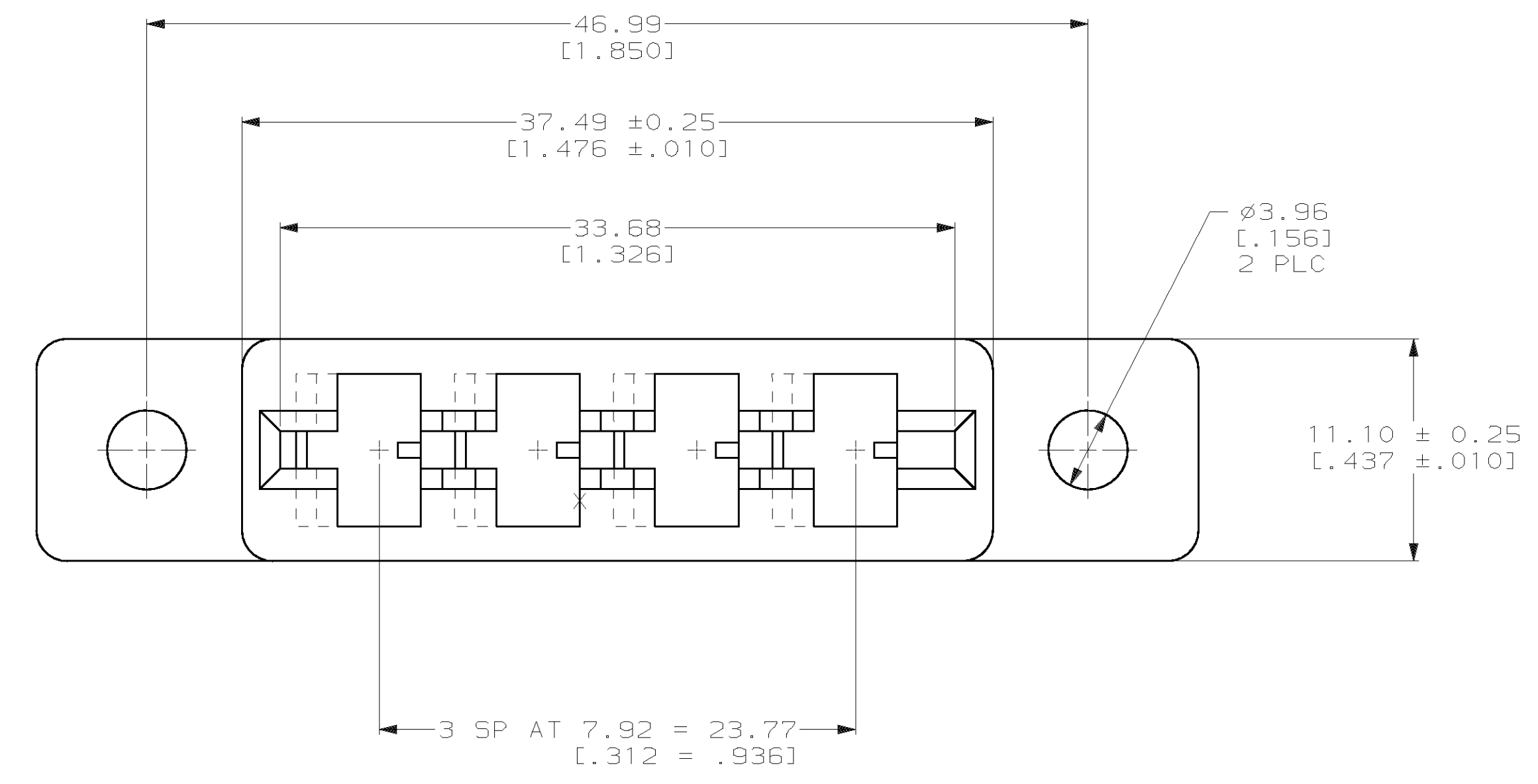
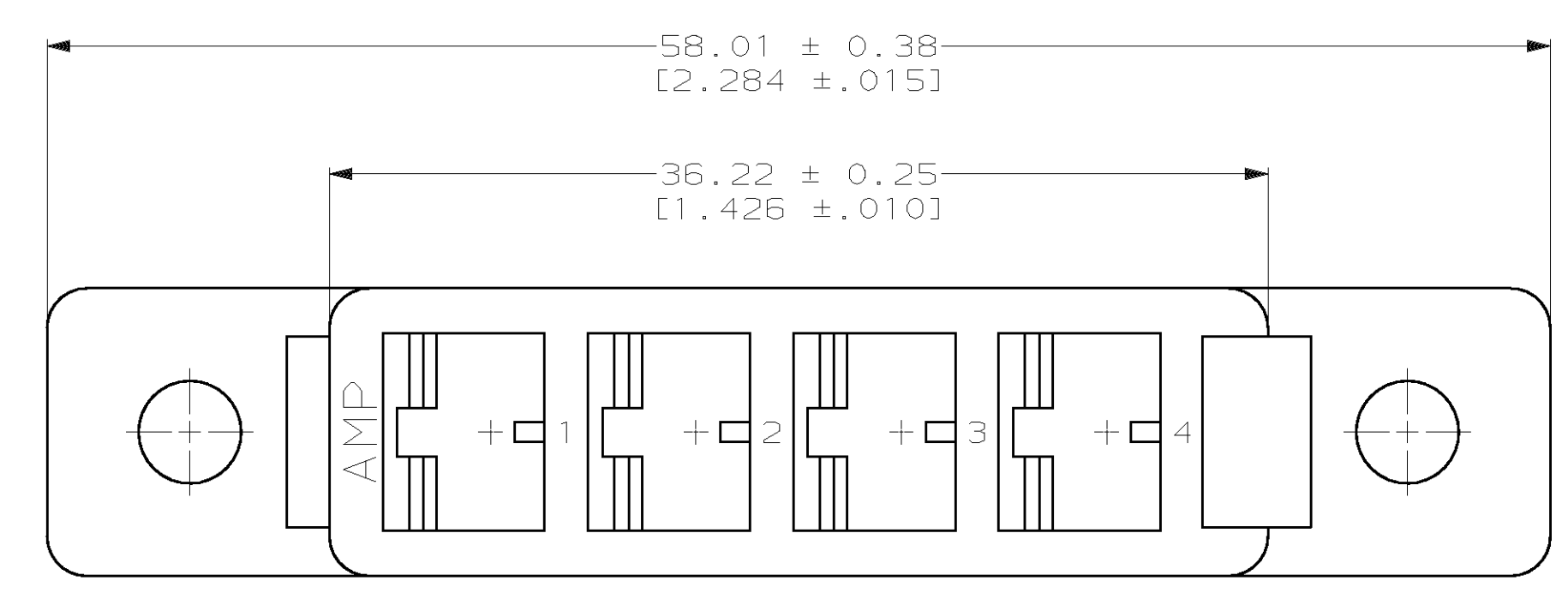
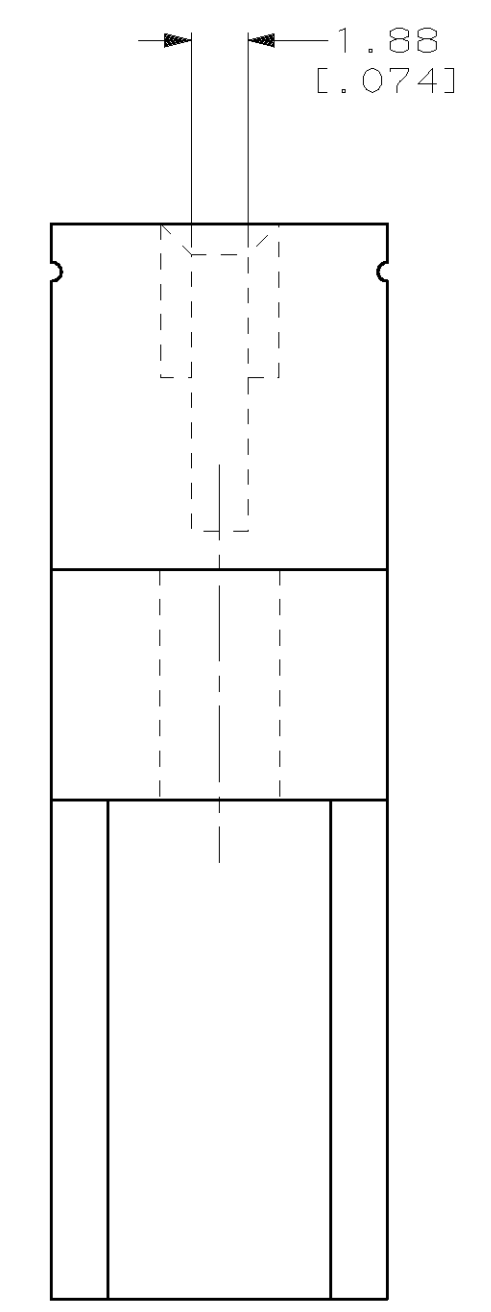
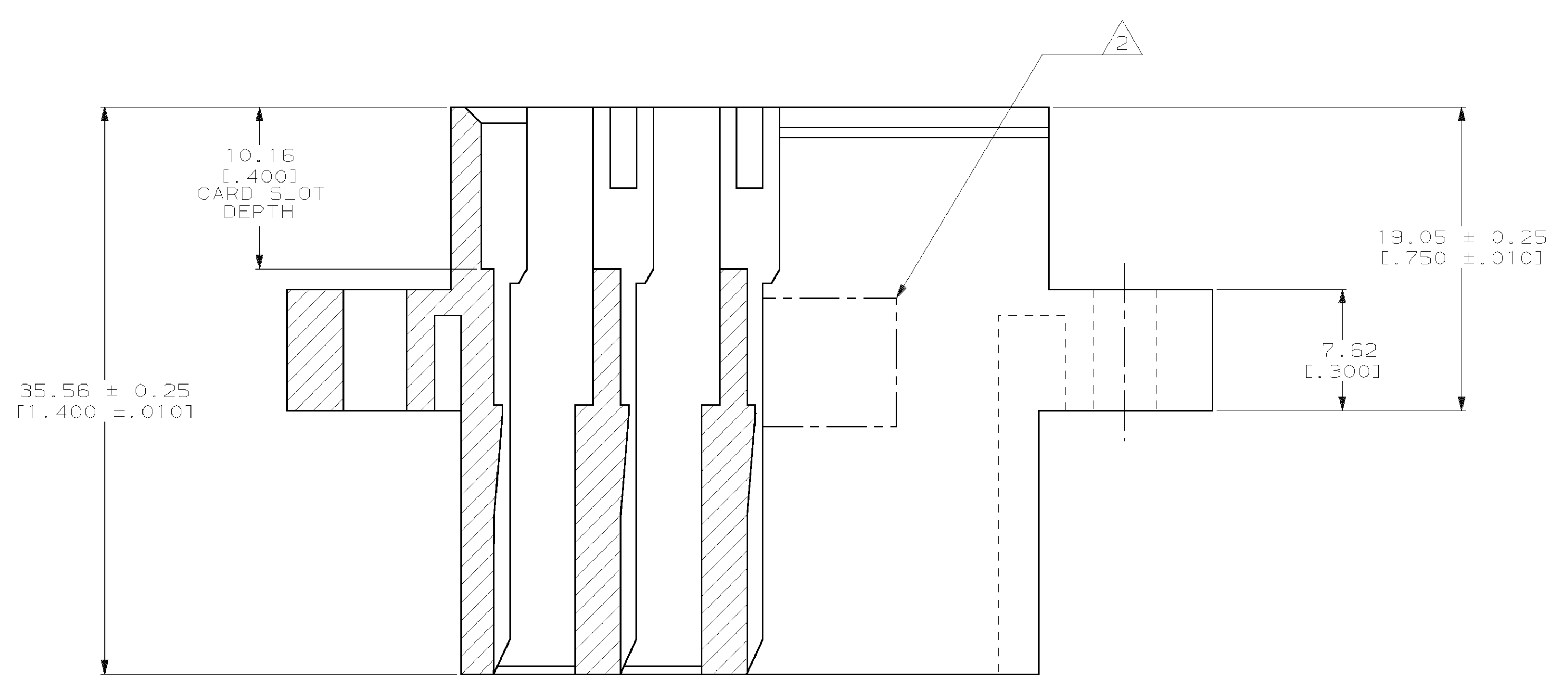


LOC		DIST		REV		REVISIONS		DATE	APPD
FT	22	P	F	ZONE	LTR	DESCRIPTION			
				0		RELEASED PER 95-0158-003-1	3/11/96	HR	
				A		REV PER 0320-264-97	05 AUG 97	NS	
				B		REV PER 0652-0070-99	04 JUN 99	MM	



- 1 MATERIAL: VALOX 420 SE0; COLOR: NATURAL.
- 2 "AMP" PART NO AND DATE CODE IN THIS AREA.



THIS DRAWING IS A CONTROLLED DOCUMENT FOR AMP INCORPORATED. IT IS SUBJECT TO CHANGE AND THE CONTROLLING ENGINEERING ORGANIZATION SHOULD BE CONTACTED FOR THE LATEST REVISION.

DO NOT SCALE PRINT. UNLESS SPECIFIED DIMENSIONS IN mm [INCHES]		DR 3/11/96 P. BENNINGHOVE		4 POSITION		145233-1	
TOLERANCES - ON :		CHK 3/11/96 H ROSE		PART NO		AMP Incorporated Harrisburg, PA 17105-3608	
2 PLC DEC ± .		APPD 3/11/96 H ROSE		NAME		HOUSING, HIGH CURRENT, .062THK. BD.	
3 PLC DEC ± .005		APPD 3/11/96 M THUMMA		PRODUCT SPEC		-	
ANGLES ± -		APPLICATION SPEC		FINISH		-	
SEE CALLOUT		-		SIZE		D	
-		-		CAGE CODE		00779	
-		-		DRAWING NO		C=145233	
-		-		SCALE		4:1	
-		-		WEIGHT		-	
-		-		SHEET		1 OF 1	