

MATERIALS AND FINISHES

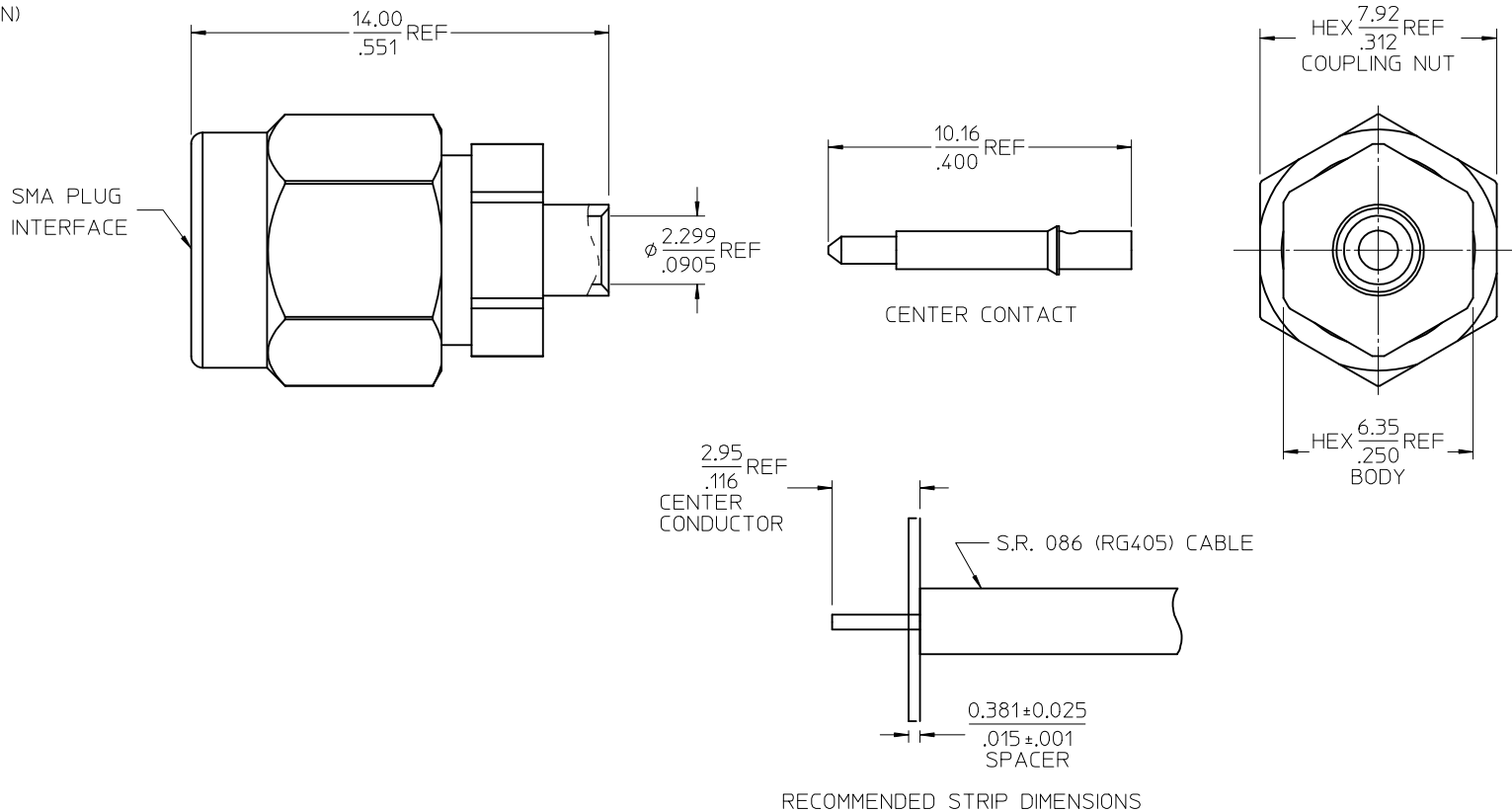
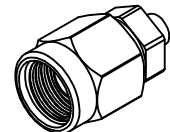
BODY SEE TABLE

COUPLING NUT STAINLESS STEEL
PLATED PASSIVATED

CENTER CONTACT BRASS
PLATED GOLD (30 MICRINCHES MIN)

INSULATOR TEFLON

GASKET SILICONE RUBBER



NOTE: MUST USE SPACER TO SOLDER
CENTER CONTACT TO CENTER
CONDUCTOR OF CABLE

73251-2431	BRASS	GOLD 5 μ " MIN	TRAY
73251-2430	STAINLESS STEEL	GOLD 10 μ " MIN	TRAY
PART NO.	MATERIAL (BODY)	FINISH (BODY)	PACKAGING

MIL-STD-348A, FIG. 310.1	INTERFACE
SPECIFICATION	DESCRIPTION

CHG:ADDED -2431 PER PDR14101724	DESCRIPTION
EC NO: URF2015-0166 DRWR:YEH 2014/10/08	
CHKD: APPR:YCHENG 2014/10/15	
REV: B1	

QUALITY SYMBOLS	GENERAL TOLERANCES (UNLESS SPECIFIED)
$\nabla \Rightarrow \bigcirc$	mm INCH
$\nabla \Rightarrow \bigcirc$	4 PLACES \pm --- \pm ---
$\nabla \Rightarrow \bigcirc$	3 PLACES \pm --- \pm ---
$\nabla \Rightarrow \bigcirc$	2 PLACES \pm --- \pm ---
	1 PLACE \pm --- \pm ---
	0 PLACE \pm --- \pm ---
	ANGULAR $\pm 1^\circ$
	DRAFT WHERE APPLICABLE MUST REMAIN WITHIN DIMENSIONS

DIMENSION STYLE	SCALE	DESIGN UNITS	THIRD ANGLE PROJECTION
MM/IN	8:1	METRIC	$\nabla \Rightarrow \bigcirc$
DRAWN BY	DATE	TITLE	
TEF	2005/01/26	SMA PLUG STR FOR RG405	
CHECKED BY	DATE	50 OHMS EWR-2409	
SSS	2005/01/26	SMA-PC	
APPROVED BY	DATE		
JDW	2005/01/26		
MATERIAL NO.	DOCUMENT NO.		
SEE TABLE	SD-73251-243		
SIZE C			

SHEET NO.	1 OF 1
THIS DRAWING CONTAINS INFORMATION THAT IS PROPRIETARY TO MOLEX INCORPORATED AND SHOULD NOT BE USED WITHOUT WRITTEN PERMISSION	