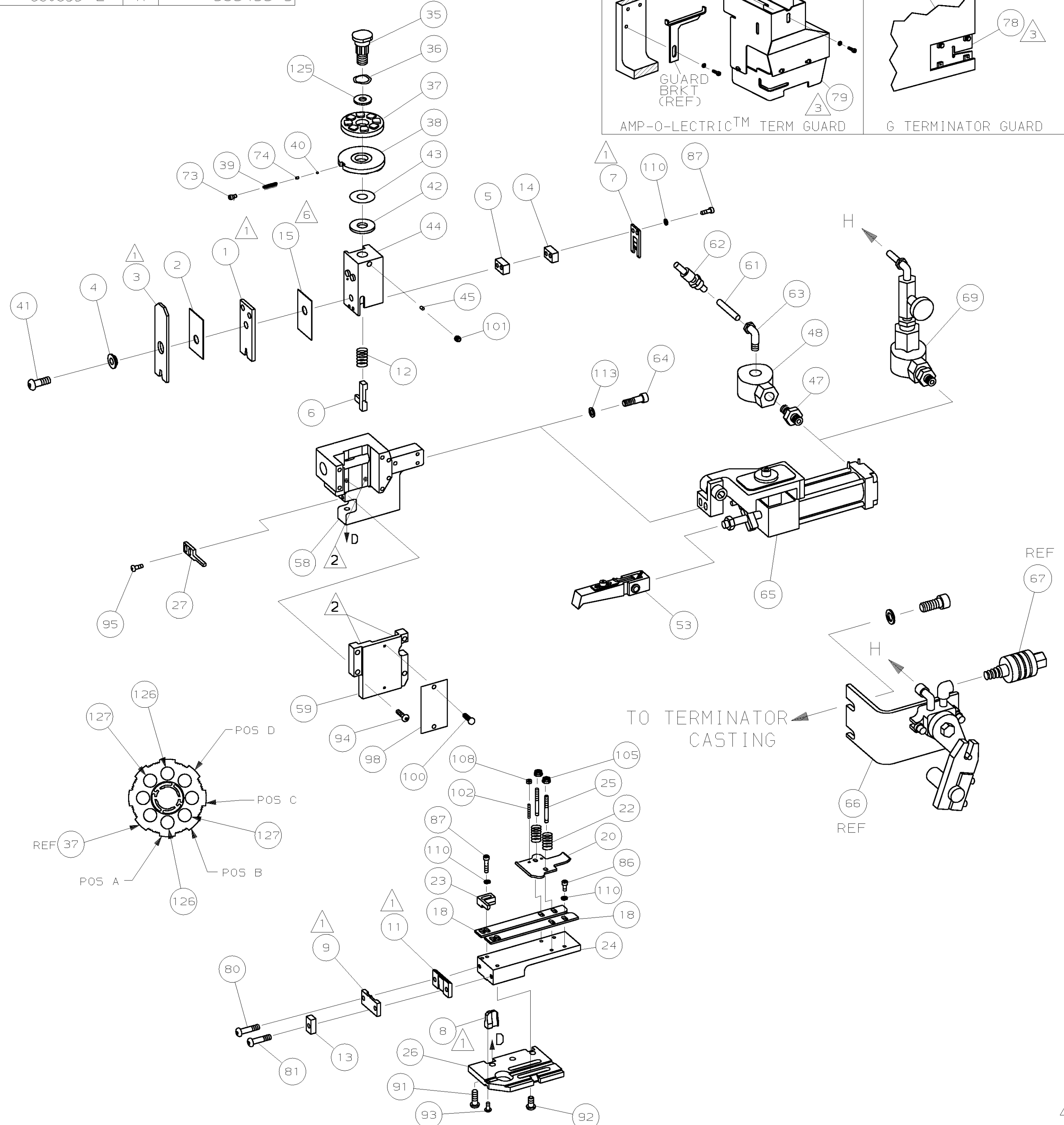
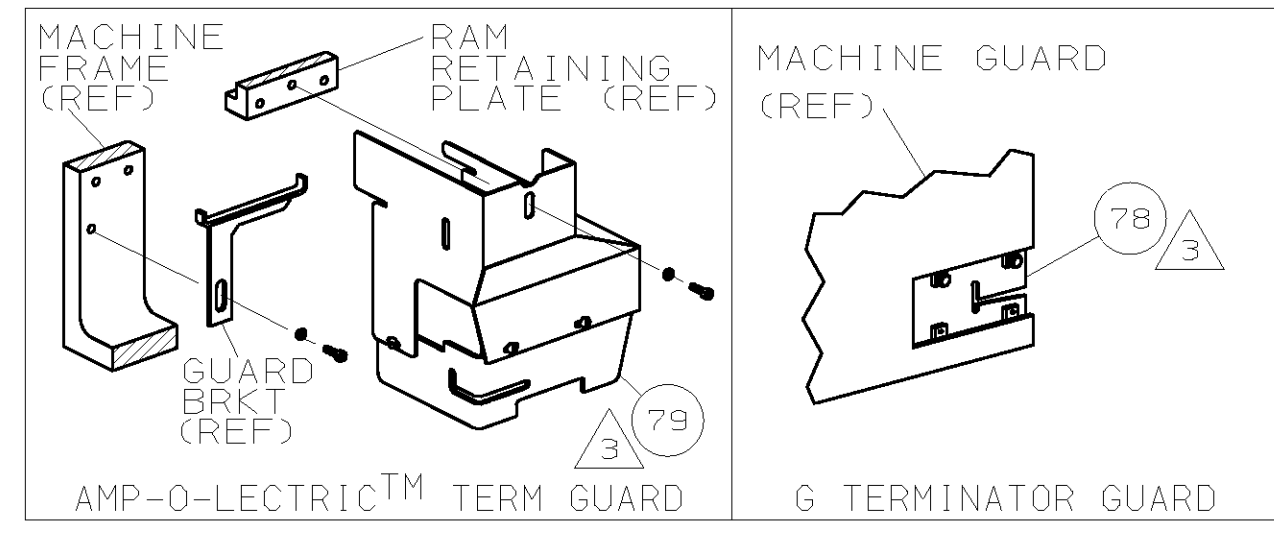


PART NUMBER	REV	FIRST USED
680633-1	A	122500-1
680633-2	A	565435-5



- 1 RECOMMENDED SPARE PARTS.
- 2 GREASE LIGHTLY.
- 3 GUARD MUST BE IN PLACE WHEN OPERATING APPLICATOR IN A BENCH MACHINE.
- 4 SEE DRAWING FOR COMPONENTS
- 5 ITEM 78 USED WITH G TERMINATOR ONLY.
- 6 INSTALL ITEM 15 WITH SHORT END UP.

AMP P/N		MFG P/N		CRIMP DATA (NON-AMP TERMINAL-CUST SPEC)		
286721		100917-E01		PAD LTR	CRIMP HEIGHT	WIRE SIZE
		(CAT #2DB8758)		A	.164 ±.002 [4.17 ±0.05mm]	10
				B	.149 ±.002 [3.78 ±0.05mm]	12
				C	NOT	USED
				D	NOT	USED
				CRIMP	SIZE	TYPE
				WIRE	.210 [5.33mm]	F
				INSUL	.280 [7.11mm]	F
				FEED		.130-.209
WIRE STRIP LENGTH		TERM APPL SPEC		APPL INSTRUCTION		SET UP GAGE
.281-.312		NONE		408-8039		LAYOUT L2075

QTY REQD PER ASSY		U/M	DWG SIZE	PART NO	DESCRIPTION	ITEM NO
1	1			129		129
1	1			128		128
2	2	-	C	5-354778-4	PIN, WIRE DISC (.2765)B	127
2	2	-	C	3-354778-1	PIN, WIRE DISC (.2650)A	126
1	1	-	A	986950-1	WASHER, FLAT PRECISION	125
1	1	-	A	217238-1	GENERAL INSTRUCTION PACKAGE	124
1	1	-	-	4088039	EF APPL INST 408-8039	123
						122
						121
						120
						119
						118
						117
						116
						115
						114
2	2	-	A	21024-5	WASHER, LOCK (#10) AIR ASSY	113
						112
						111
7	7	-	A	21024-4	WASHER, LOCK (NO.8) SHEAR BL	110
						109
2	2	-	A	21018-4	NUT, HEX (4-40) DRAG	108
						107
						106
2	2	-	A	21022-2	NUT, HEX SL (8-32) DRAG STUD	105
						104
						103
2	2	-	A	2-21006-6	SCR, SKT SET (4-40x.62) DRAG	102
1	1	-	A	21009-2	SCR, SKT SET (1/4-20x.25) RAM	101
2	2	-	A	21017-2	SCR, DRIVE (#2x.19) ID PLATE	100
						99
1	1	-	B	461264-1	PLATE, IDENTIFICATION	98
						97
						96
2	2	-	A	2-21002-2	SCR, BHC (8-32x.50) STRIPPER	95
4	4	-	A	2-21002-9	SCR, BHC (10-32x.75) CAP	94
1	1	-	A	22733-8	SCR, BHC (8-32x.38 LW) ANVIL	93
4	4	-	A	3-21002-3	SCR, BHC (1/4-20x.50) ST 6D PL	92
3	3	-	A	2-22733-8	SCR, BHC (1/4-20x.62) H5G	91
						90
						89
						88
4	4	-	A	2-21000-9	SCR, SHC (8-32x.75) SLUG BLADE	87
3	3	-	A	2-21000-6	SCR, SHC (8-32x.38) STRIP GUIDE	86
						85
						84
						83
						82
1	1	-	A	3-21002-1	SCR, BHC (10-32x1.00) SHEAR PL	81
1	1	-	A	3-21002-0	SCR, BHC (10-32x.88) SHEAR PL	80
1	-	-	A	455750-7	GUARD ASSY	79
-	REF	-	A	679532-1	INSERT, GUARD	78
						77
						76
						75
1	1	-	A	690603-1	SPRING, ASSIST	74
1	1	-	A	23030-1	SCR, SKT CAP (6-32x.25) CP DSC	73
						72
						71

QTY REQD PER ASSY	U/M	DWG SIZE	PART NO	DESCRIPTION	ITEM NO
-2	-1				

QTY REQD PER ASSY	U/M	DWG SIZE	PART NO	DESCRIPTION	ITEM NO	
1	1				70	
1	1				69	
1	1				68	
REF	-	-	A	24042-2	VALVE, SHUT OFF	67
REF	-	-	C	692655-6	AIR FEED VALVE ASSY	66
1	1	-	B	2-460277-0	AIR FEED ASSY (2 INCH)	65
2	2	-	A	3-21000-9	SCR, SHC (10-32x1.00) AIR ASSY	64
-	1	-	A	980285-2	ELBOW, SWIVEL 1/8 NPT - 1/4 T	63
-	1	-	A	23238-1	QUICK DISCONNECT	62
-	12.00	IN	A	27319-4	TUBING, POLY-FLO Ø.25	61
					60	
1	1	-	C	454220-1	CAP, RAM	59
1	1	-	D	453736-1	HOUSING	58
					57	
					56	
					55	
					54	
1	1	-	B	460680-1	FEED FINGER ASSY	53
					52	
					51	
					50	
					49	
-	1	-	A	22374-7	VALVE, QUICK EXHAUST	48
-	1	-	A	22304-1	NIPPLE, HEX 1/8 NPT	47
					46	
1	1	-	A	690191-1	PLUG, NYLON	45
1	1	-	C	455674-1	RAM	44
1	1	-	A	690125-1	WASHER, LAMINATED	43
1	1	-	A	690124-5	WASHER, RAM	42
1	1	-	A	7-21002-9	BOLT, CRIMPER (5/16-24x1.00)	41
1	1	-	A	23241-6	BALL, STEEL	40
1	1	-	A	690170-1	SPRING, COMPRESSION	39
1	1	-	C	690142-1	DISC, INSULATION	38
1	1	-	D	354777-1	WIRE DISC, PLASTIC	37
1	1	-	A	22480-5	WASHER, SPRING	36
1	1	-	B	690212-1	POST, RAM	35
					34	
					33	
					32	
					31	
					30	
					29	
					28	
1	1	-	A	240639-3	STRIPPER	27
1	1	-	D	455676-1	PLATE, BASE	26
2	2	-	A	22354-8	DRAG, STUD	25
1	1	-	B	455678-1	PLATE, STRIP GUIDE	24
1	1	-	C	240825-5	PLATE, STRIP HOLD DOWN	23
2	2	-	A	4-22281-1	SPRING, DRAG	22
					21	
1	1	-	A	454177-1	DRAG, STOCK	20
					19	
2	2	-	C	454204-4	GUIDE, STRIP (FRONT)	18
					17	
					16	
1	1	-	B	455888-4	SPACER, CRIMPER	15
1	1	-	C	240641-3	SPACER, SLUG BLADE	14
1	1	-	C	1-690481-2	SPACER, HOLD DOWN	13
1	1	-	A	23846-1	SPRING, HOLD DOWN	12
1	1	-	B	240644-1	PLATE, REAR SHEAR	11
					10	
1	1	-	B	690482-7	PLATE, FRONT SHEAR	9
1	1	-	D	5-461295-9	ANVIL	8
1	1	-	B	2-690474-0	BLADE, SLUG	7
1	1	-	D	3-455892-4	HOLD DOWN, TERMINAL	6
1	1	-	C	2-240641-5	SPACER, SLUG BLADE	5
1	1	-	B	238009-7	SPACER, BLOCK CRIMPER	4
1	1	-	C	5-456134-6	CRIMPER, INSULATION	3
1	1	-	B	1-455888-0	SPACER, CRIMPER	2
1	1	-	C	6-458141-1	CRIMPER, WIRE	1

QTY REQD PER ASSY	U/M	DWG SIZE	PART NO	DESCRIPTION	ITEM NO
-2	-1				

THIS DRAWING IS A CONTROLLED DOCUMENT.

RELEASED FOR PUBLICATION BY AMP INCORPORATED. ALL RIGHTS RESERVED.

THIS DRAWING IS UNRELEASED. COPYRIGHT 19

LOC A DIST 66

30080

D

C

B

A