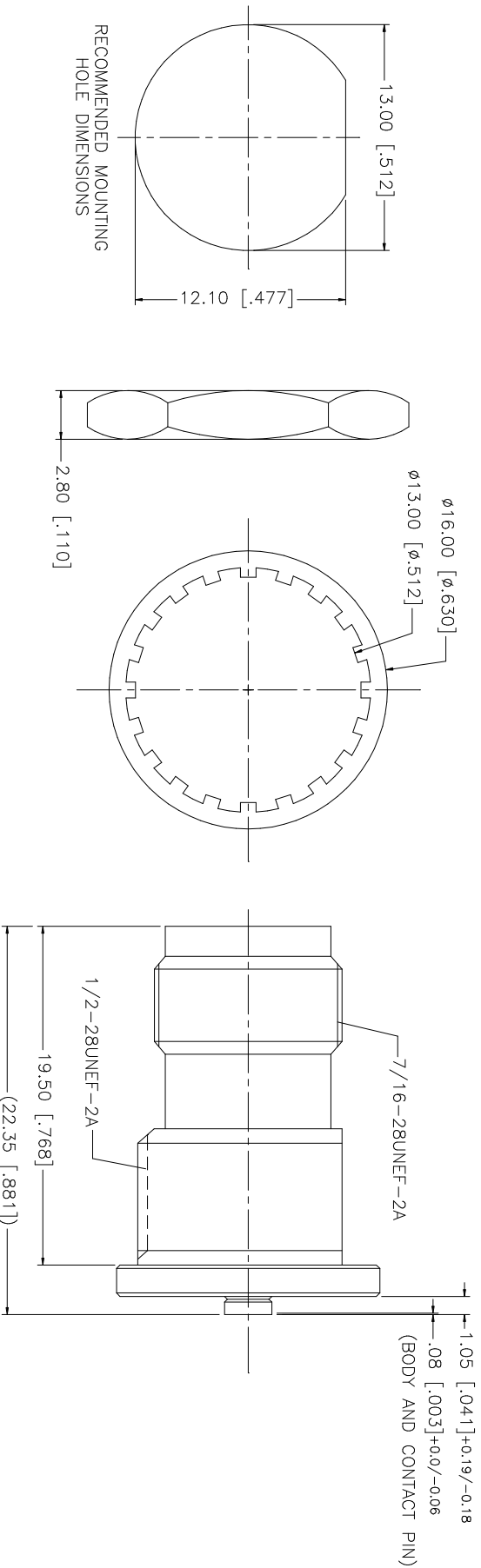


REV.	DATE	DESCRIPTION
NC	04/06/04	INITIAL RELEASE
A	05/26/06	REVISE PART DESCRIPTION TO "AMC" JACK



NOTES:
1. MAX. PANEL THICKNESS = 5mm

UNLESS OTHERWISE SPECIFIED DIMENSIONS ARE INCHES AND FOR CUSTOMER REFERENCE ONLY.	UNLESS OTHERWISE SPECIFIED DIMENSIONS ARE INCHES AND FOR CUSTOMER REFERENCE ONLY.	UNLESS OTHERWISE SPECIFIED DIMENSIONS ARE INCHES AND FOR CUSTOMER REFERENCE ONLY.	UNLESS OTHERWISE SPECIFIED DIMENSIONS ARE INCHES AND FOR CUSTOMER REFERENCE ONLY.	UNLESS OTHERWISE SPECIFIED DIMENSIONS ARE INCHES AND FOR CUSTOMER REFERENCE ONLY.	UNLESS OTHERWISE SPECIFIED DIMENSIONS ARE INCHES AND FOR CUSTOMER REFERENCE ONLY.	UNLESS OTHERWISE SPECIFIED DIMENSIONS ARE INCHES AND FOR CUSTOMER REFERENCE ONLY.	UNLESS OTHERWISE SPECIFIED DIMENSIONS ARE INCHES AND FOR CUSTOMER REFERENCE ONLY.	UNLESS OTHERWISE SPECIFIED DIMENSIONS ARE INCHES AND FOR CUSTOMER REFERENCE ONLY.	UNLESS OTHERWISE SPECIFIED DIMENSIONS ARE INCHES AND FOR CUSTOMER REFERENCE ONLY.	UNLESS OTHERWISE SPECIFIED DIMENSIONS ARE INCHES AND FOR CUSTOMER REFERENCE ONLY.	
8											
7											
6	HEX NUT	BRASS	NICKEL	1							
5	LOCK WASHER	BRASS	NICKEL	1							
4	BODY	BRASS	NICKEL	1							
3	INSULATOR	TEFLON	NATURAL	1							
2	CONTACT PIN	BRASS	GOLD	1							
1	BODY	BRASS	NICKEL	1							
DESCRIPTION		MATERIAL		FINISH		QTY					
<p>UNLESS OTHERWISE SPECIFIED DIMENSIONS ARE INCHES AND FOR CUSTOMER REFERENCE ONLY.</p> <p>UNLESS OTHERWISE SPECIFIED DIMENSIONS ARE INCHES AND FOR CUSTOMER REFERENCE ONLY.</p> <p>TOLERANCES FOR MILLIMETERS ARE:</p> <p>0.5 - 8mm ± 0.20mm 8 - 30mm ± 0.40mm 30 - 120mm ± 0.50mm</p> <p>UNLESS OTHERWISE SPECIFIED TOLERANCES FOR INCHES ARE:</p> <p>.020 - .315 = ± 0.007" .315 - 1.180 = ± 0.015" 1.180 - 4.724 = ± 0.020"</p> <p>DO NOT SCALE DRAWING</p>											
APPROVALS			DATE								
DRAWN G.R.S.			05/26/06								
CHECKED											
ISSUED											
SHEET 1 OF 1											
CAD FILE C:/242/242192RP.DWG			DWG. NO. 242192RP.DWG			REV. A			SCALE NA		
<p>Amphenol Connex</p> <p>AMC JACK TO TNC REVERSE POLARITY JACK BULKHEAD ADAPTER</p> <p>242192RP</p>											