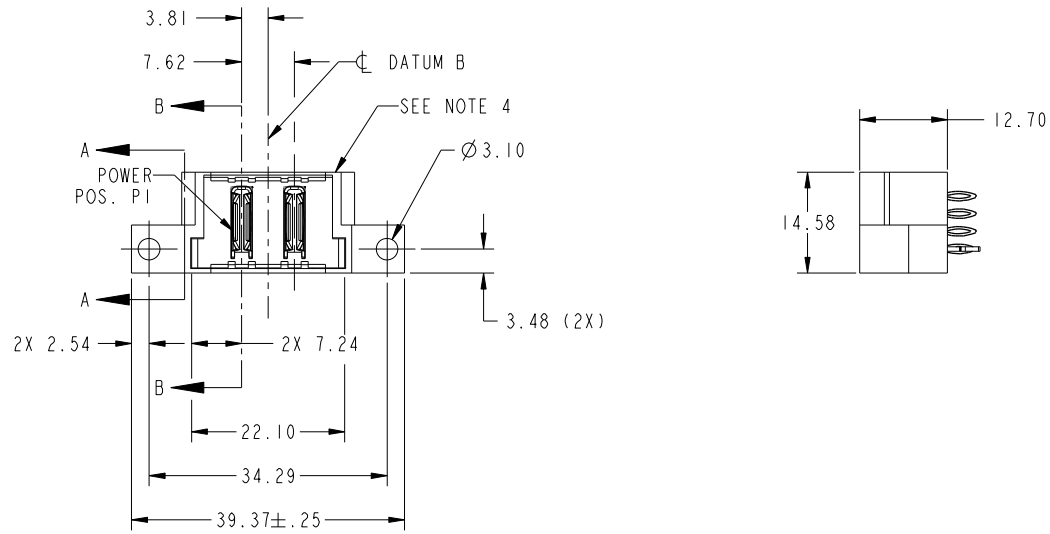


Tous droits strictement reserves. Reproduction ou communication a des tiers interdite sous quelque forme que ce soit sans autorisation écrite du propriétaire. Propriete de c FCI. Droits de reproduction FCI.

All rights strictly reserved. Reproduction or issue to third parties in any form whatever is not permitted without written authority from the proprietor. Property of FCI. Copyright FCI.



PRODUCT NO. 51963-017-- NOTE: 3	POWER			
	E1	P1	P2	E2
	HA	PC	PC	HA



CODE	DIM "M" MATING LENGTH	CONTACT TYPE
PC	[N/A]	POWER
HA	[N/A]	HOLD-DOWN

mat'l code				SEE NOTES		tolerances unless otherwise specified		CUSTOMER		FCI www.fciconnect.com	
ltr	ecn no.	dr	date	linear	0.X ±0.5		COPY		projection	title	
A	DG06-0428	JMG	10/18/06		0.XX ±0.25		MIM			2P VERTICAL PRESS-FIT HEADER	
B	DG07-0498	JW	09/12/08		0.XXX ±0.10		1:1			product family PwrBlade code 213	
				angles	0° ±2°		scale		size A		sheet 1 of 4
				dr	JM GUO	10/18/06			dwg no 51963-017		
				enrg	BEER FU	10/18/06					
				chr	BEER FU	10/18/06					
				appd	JOSEPH HSIA	10/18/06					
sheet index	revision sheet	B 1	B 2	B 3	B 4					cage code 22526	B 4

Pro/E

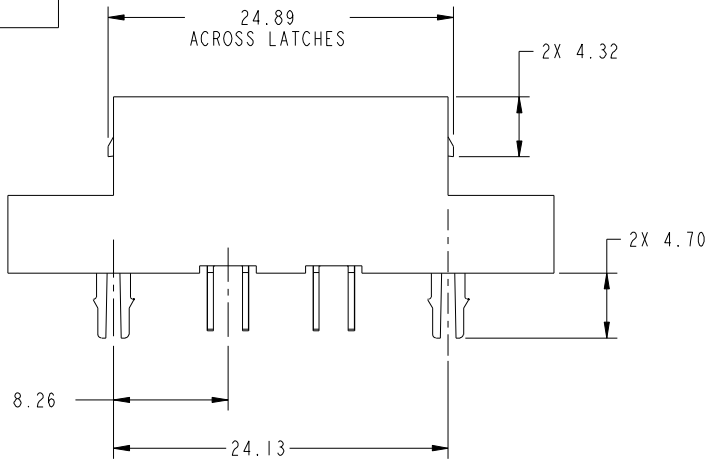
cage code 22526

Tous droits strictement reserves. Reproduction ou communication a des tiers interdite sous quelque forme que ce soit sans autorisation écrite du propriétaire. Propriete de c FCI. Droits de reproduction FCI.

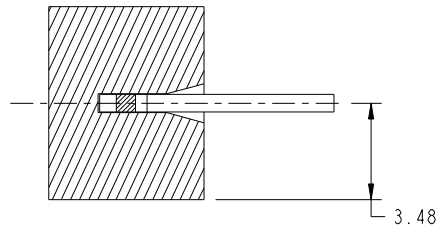


All rights strictly reserved. Reproduction or issue to third parties in any form whatever is not permitted without written authority from the proprietor. Property of FCI. Copyright FCI.

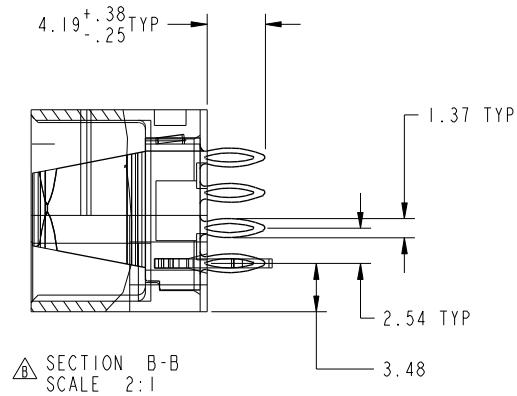
PRODUCT NUMBER
51963-017--
NOTE: 3



SCALE 2:1



SECTION A-A
SCALE 4:1



SECTION B-B
SCALE 2:1

mat'l code		SEE NOTES		tolerances unless otherwise specified		CUSTOMER		 www.fciconnect.com	
ltr	ecn no.	dr	date	linear	0.X ± 0.5	COPY		title	
B					0.XX ± 0.25	projection		2P	
				angles	0.XXX ± 0.10			VERTICAL PRESS-FIT HEADER	
				dr	0° ± 2°			product family	PwrBlade
				enr	JM GUO 10/18/06	scale		size	code
				enr	BEER FU 10/18/06	1:1		dwg no	213
				chr	BEER FU 10/18/06			A	51963-017
				appd	JOSEPH HSIA 10/18/06				
sheet index	revision sheet								

cage code 22526

Pro/E

Tous droits strictement réservés. Reproduction ou communication a des tiers interdite sous quelque forme que ce soit sans autorisation écrite du propriétaire. Propriété de c FCI. Droits de reproduction FCI.



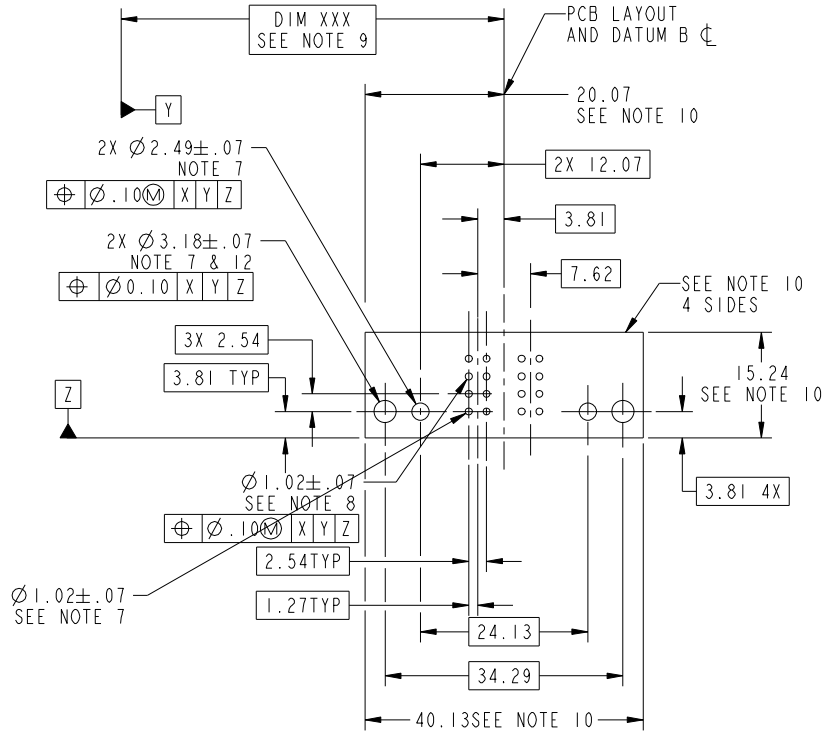
All rights strictly reserved. Reproduction or issue to third parties in any form whatever is not permitted without written authority from the proprietor. Property of FCI. Copyright FCI.

PRODUCT NUMBER
51963-017--
NOTE: 3

1 2

3

4



A

A

mat'l code				SEE NOTES		Tolerances unless otherwise specified		CUSTOMER	
ltr	ecn no.	dr	date	linear		0.X ±0.5	COPY		www.fciconnect.com title 2P VERTICAL PRESS-FIT HEADER
B				angles		0.XX ±0.25	projection		
						0.XXX ±0.10			
				dr	JM GUO	10/18/06			product family
				enr	BEER FU	10/18/06	scale		PwrBlade
				chr	BEER FU	10/18/06	1:1		code
				appd	JOSEPH HSIA	10/18/06	A		213
sheet index		revision sheet					size		3
							dwg no		3
							51963-017		
							cage code		
							22526		

B

B

1 2

Pro/E

3

cage code
22526

4

Tous droits strictement reserves. Reproduction ou communication a des tiers interdite sous quelque forme que ce soit sans autorisation écrite du propriétaire. Propriete de c FCI. Droits de reproduction FCI.



All rights strictly reserved. Reproduction or issue to third parties in any form whatever is not permitted without written authority from the proprietor. Property of FCI. Copyright FCI.

PRODUCT NUMBER
51963-017--
NOTE: 3

NOTES:

1. DIMENSIONS AND TOLERANCES ARE IN ACCORDANCE WITH ASME Y14.5M, 1994 UNLESS OTHERWISE SPECIFIED.

CONNECTOR NOTES:

2 HOUSING MATERIAL: UL 94 V-0 GLASS FILLED HIGH-TEMP THERMOPLASTIC
POWER CONTACT MATERIAL: COPPER ALLOY
SIGNAL PIN MATERIAL: COPPER ALLOY

3. PLATING
SEE ITEM 3 & 4 IN PRINT 10064183 FOR PLATING SPEC OF 51963-017; 51963-017LF PRESPECTIVELY.

4 MANUFACTURER'S NAME, P/N AND DATE CODE APPEAR ON THIS SURFACE.

5. PACKAGED IN TRAYS.

PCB NOTES:

6. ALL HOLE DIAMETERS ARE FINISHED HOLE SIZE.
7. MOUNTING HOLES, WHERE APPLICABLE, ARE UNPLATED.

8 $\varnothing 1.151 \pm 0.025$ DRILLED HOLES PLATED WITH)
0.008 MIN SnPb OR Sn OVER 0.03
TO 0.08 Cu PLATING TO ACHIEVE
 $\varnothing 1.02 \pm .07$ HOLE.

9 "DIM XXX" TO BE DETERMINED BY THE CUSTOMER.)

10 CONNECTOR KEEP-OUT ZONE.)

11. FOR PRESS FIT APPLICATION USE FCI CAM TOOL 430169-018.)

12. CUSTOMER SUPPLIES (2) #4-40 UNC SCREWS, HARDWARE TO MOUNT HEADER TO PC BOARD.

13. A Δ SYMBOL WILL BE NEXT TO ANY DIMENSION, VIEW, OR NOTE WHICH HAS BEEN MODIFIED WITH THE CURRENT DRAWING REVISION.

mat'l code		SEE NOTES		tolerances unless otherwise specified		CUSTOMER		FCI www.fciconnect.com	
ltr	ecr no.	dr	date	linear	0.X ± 0.5		COPY		title 2P VERTICAL PRESS-FIT HEADER
B					0.XX ± 0.25		projection		
					0.XXX ± 0.10				
				angles	0° + 2°				product family PwrBlade code 213
					dr	JM GUO	10/18/06	size	
				enrg	BEER FU	10/18/06	dwg no		sheet 4
				chr	BEER FU	10/18/06	A 51963-017		
				appd	JOSEPH HSIA	10/18/06	scale 1:1		cage code 22526
sheet index	revision sheet								

Pro/E

cage code 22526