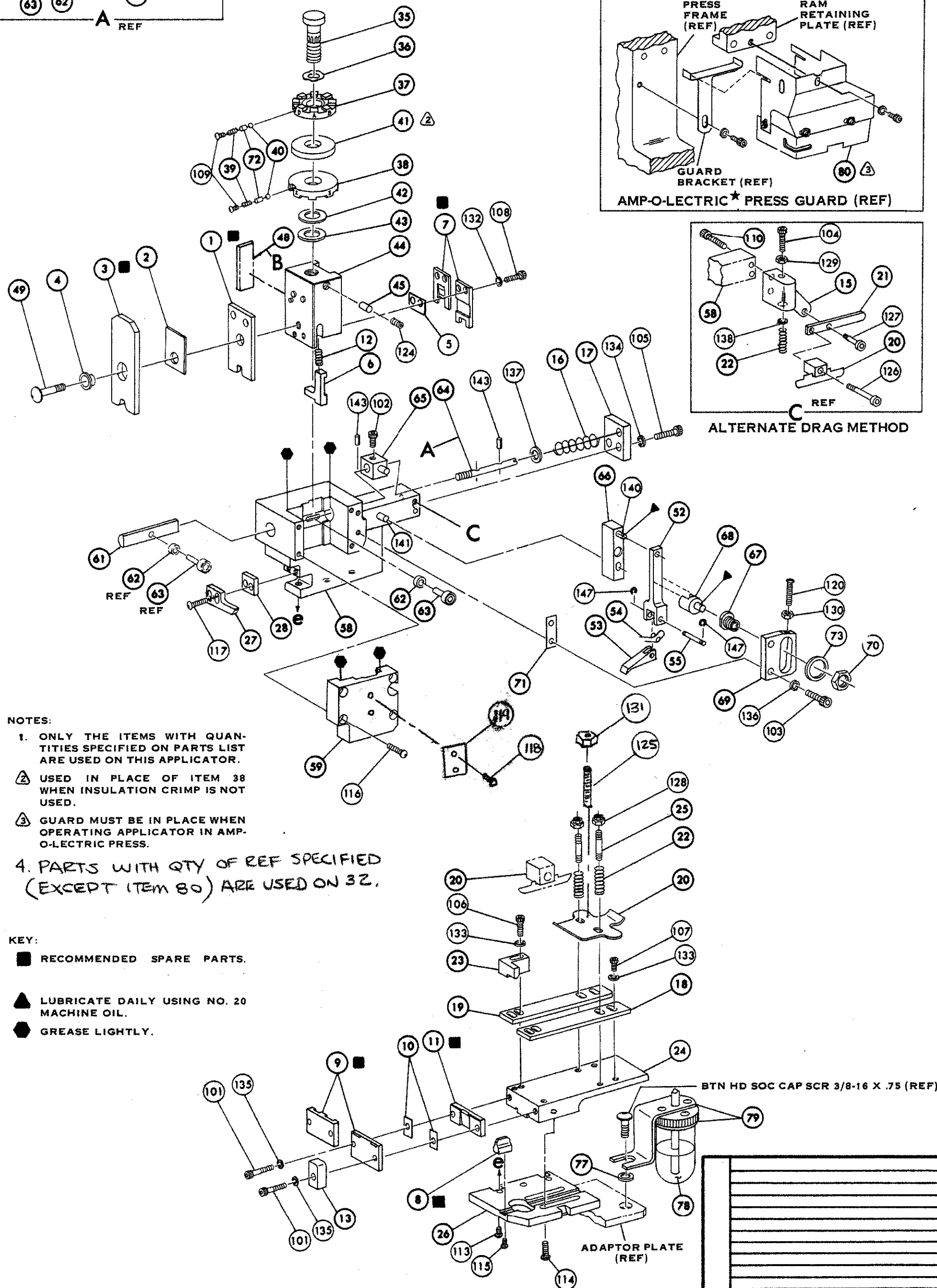
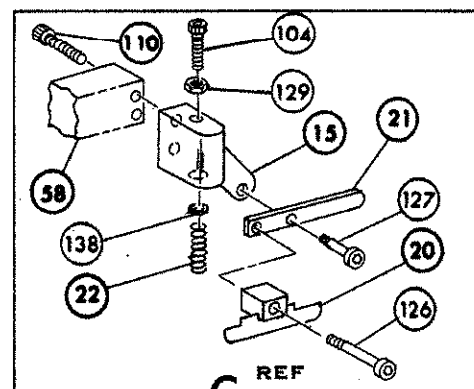
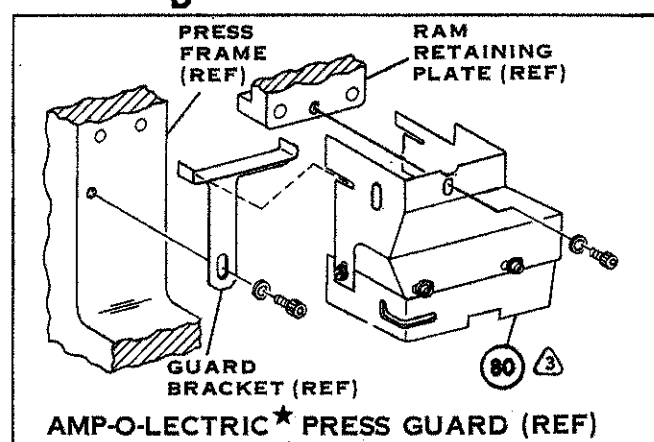
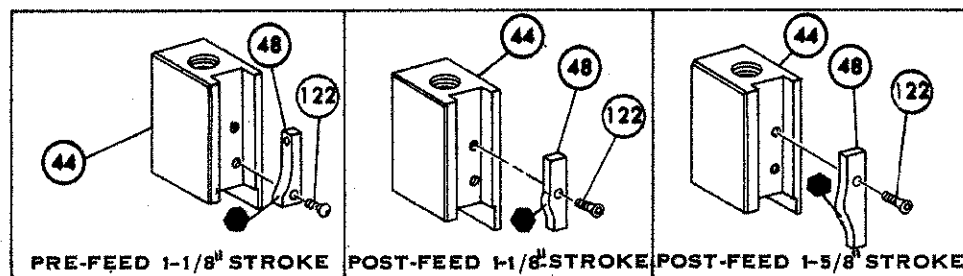
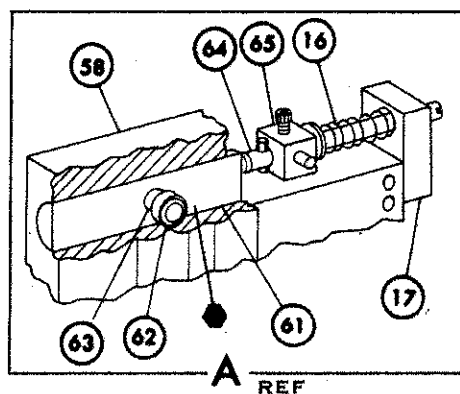


THIS IS A CONTROLLED DOCUMENT.



- NOTES:
- ONLY THE ITEMS WITH QUANTITIES SPECIFIED ON PARTS LIST ARE USED ON THIS APPLICATOR.
 - USED IN PLACE OF ITEM 38 WHEN INSULATION CRIMP IS NOT USED.
 - GUARD MUST BE IN PLACE WHEN OPERATING APPLICATOR IN AMP-O-LECTRIC PRESS.
 - PARTS WITH QTY OF REF SPECIFIED (EXCEPT ITEM 80) ARE USED ON 32.

- KEY:
- RECOMMENDED SPARE PARTS.
 - LUBRICATE DAILY USING NO. 20 MACHINE OIL.
 - GREASE LIGHTLY.

REQ.	PART NO.	DESCRIPTION	NO.	REQ.	PART NO.	DESCRIPTION	NO.
	162	REF 690517-1	SPACER		71		
	161	22594-8	HEX. NUT		70		
	160	240628-1	PLATE, ADJ		69		
	159	240626-1	SHAFT, PIVOT		68		
	158	240633-1	BUSHING		67		
	157	455680-1	LEVER, INTERMEDIATE		66		
	156	240629-1	BLOCK, PIVOT		65		
	155	240632-2	SCREW, ADJ		64		
	154	240659-3	PIN, CAM ROLLER		63		
	153	240658-1	CAM, ROLLER		62		
	152	REF 454398-1	ROD, FEED		61		
	151				60		
	150	REF 454220-1	CAP, RAM		59		
	149	REF 453736-1	HOUSING		58		
	148				57		
	147				56		
REF	21045-3	RING, RETAINING 'C' (.187 DIA) FEED PIN		REF	240624-1	PIN, FEED FINGER	55
				REF	691499-1	SPRING, FEED FINGER	54
				REF	240635-1	FINGER, FEED	53
REF	5- 21028-1	PIN, SLOT SPG (.12 DIA x .50) FEED ADJ ROD		REF	240634-3	LEVER, TERMINAL	52
							51
REF	1- 21030-7	PIN, DOWEL (.187 DIA x 1.50) HOUSING					50
REF	1- 21030-1	PIN, DOWEL (.187 DIA x .50) LEVER					49
							48
	22260-5	WASH, FLAT (NO. 6) DRAG SPRING					47
REF	21899-4	WASH, FLAT (NO. 5/16 DIA) SCR ADJ					46
REF	21024-5	WASH, LOCK (NO. 10) FEED ADJ PLATE					45
2	21024-5	WASH, LOCK (NO. 10) SHEAR PLATES					44
REF	21024-5	WASH, LOCK (NO. 10) FEED ROD GUIDE					43
4	21024-4	WASH, LOCK (NO. 8) STRIP GUIDE					42
2	21024-4	WASH, LOCK (NO. 8) SHEAR BLADE					41
2	21018-4	NUT, HEX MACH (4-40) DRAG					40
REF	21068-5	NUT, HEX MACH (6-32) FEED ADJ PLATE					39
	21018-7	NUT, HEX MACH (10-32) DRAG SPRING					38
	21022-2	NUT, HEX SELF-LKG (8-32) DRAG STUDS					37
	5- 21004-7	SCR, SKT HD SHLD (.250 DIA x .25) DRAG ARM					36
							35
	21004-5	SCR, SKT HD SHLD (.250 DIA x 1.00) DRAG					34
2	4-21078-8	SCR, SKT SET OVAL POINT (4-40x.75) DRAG					33
1	21009-2	SCR, SKT SET (1/4-20 x .25) NYLOK RAM					32
							31
1	1- 21002-7	SCR, BUT HD SOC CAP (6-32 x .38) CAM					30
							29
REF	3- 21064-2	SCR, RDH HD MACH (6-32 x 1.50) FEED ADJ					28
1	461264-1	PLATE, I.D.					27
2	21017-2	SCR, DRIVE (#2 x .19 LG) PLATE, I.D.					26
2	2-21002-2	SCR, BTN HD SKT CAP (8-32 x .50) STRIPPER					25
REF	2- 21002-9	SCR, BTN HD SKT CAP (10-32 x .75) HSG CAP					24
1	22733-8	SCR, BTN HD SKT CAP (8-32 x .38) NYLOK ANVIL					23
4	3- 21002-3	SCR, BTN HD SKT CAP (1/4-20 x .50) STR GDE PL					22
REF	1-24073-9	SCR, BTN HD SKT CAP (1/4-20 x .75) BASE PLATE					21
							20
	2- 21000-4	SCR, SKT HD CAP (6-32 x 1.00) DRAG ADAPTOR					19
2	23030-1	SCR, SKT HD CAP (6-32 x .25) NYLOK C. P. DISC					18
2	2-21000-5	SCR, SKT HD CAP (8-32 x .25) SHEAR BLADE					17
3	7-21000-4	SCR, SKT HD CAP (8-32 x .31) STRIP GUIDE					16
REF	7-21000-4	SCR, SKT HD CAP (8-32 x .31) STRIP GUIDE					15
REF	3- 21000-7	SCR, SKT HD CAP (10-32 x .75) FD ROD GUIDE					14
							13
REF	3- 21000-9	SCR, SKT HD CAP (10-32 x 1.00) DRAG SPRING					12
REF	3- 21000-6	SCR, SKT HD CAP (10-32 x .62) FD ADJ PLATE					11
REF	3- 21000-4	SCR, SKT HD CAP (10-32 x .38) PIVOT BLK					10
2	3- 21002-0	SCR, BTN HD CAP (10-32 x .88) SHEAR PLATES					9
REF	455745-1	GUARD WINDOW					8
	465184-9	LUBRICATOR ASSY					7
	22014-1	OIL SYNTHETIC					6
	454406-1	SPACER, LUBRICATOR BRACKET					5
							4
							3
							2
REF	458109-1	WASHER, FLAT (SPECIAL)					1
2	690603-1	SPRING, ASSIST					

TERM APPL SPEC 114-2084

CRIMPING DATA				THIS APPLICATOR WILL APPLY
PAD LETTER	CRIMP HEIGHT	WIRE SIZE	WIRE LENGTH	
A	.066	16	.125-.155	41471
B	.060	18	.125-.155	41472
C	.057	20	.125-.155	
D	NOT USED			
CRIMP	SIZE	TYPE	FEED	PRESS REF.
WIRE	120 F			
INSULATION	155 F		.504	
INSULATION RANGE	WIRE RANGE	APPLICATOR INSTRUCTION #8039		
100-135	20-16			
REMARKS AMPOMATOR				
LAYOUT L1772				

J ECN 0150-1457-04
 HI ECN 0150-0393-03
 H 0150-8254-97
 G 0150-7827-97
 F 0150-7275-96
 E 0150-6882-96
 D 0150-6740-96
 C ECN A16048A
 B REV PER ECN R-3509
 A REV PER ECN R-418
 01 REV PER ECN R-1182
 01 REV PER ECN R-1182

SET UP GAGE 458638-1
 DRAWN 5-31-73
 CHECKED 6-1-73
 APPROVED 6-1-73
 LOC A C NO. 687819-113

AMP HARRISBURG, PENNA.
 MINIATURE QUICK CHANGE APPLICATOR
 END-FEED RING

DIMENSIONS IN INCHES DO NOT SCALE PRINT.
 TRADEMARK OF AMP INCORPORATED.
 3076-1

NO. 687819-1