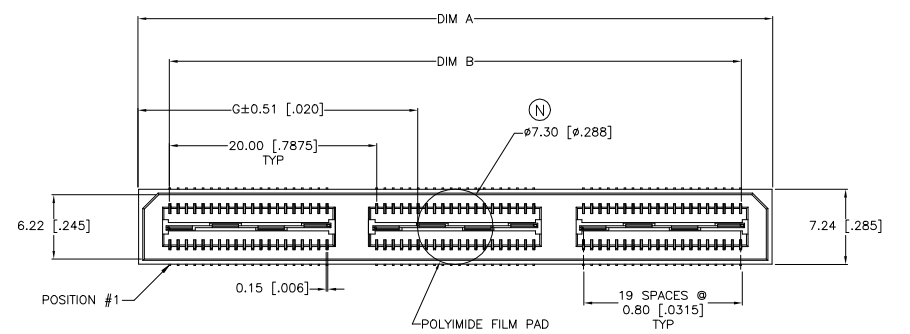
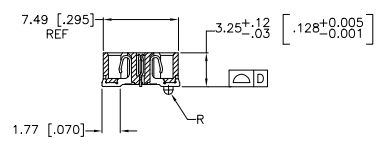
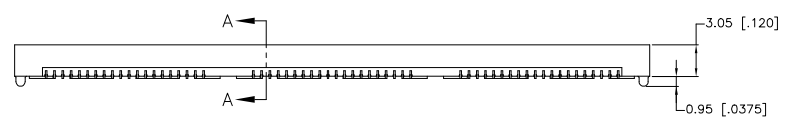


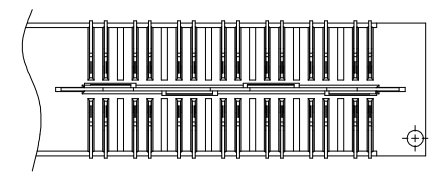
| REVISIONS | | | | |
|-----------|-----------|---------------------------|----|-------|
| # | DATE | DESCRIPTION | BY | APP'D |
| N | 29APR2019 | REVISED PER ECR-19-008349 | AL | HL |



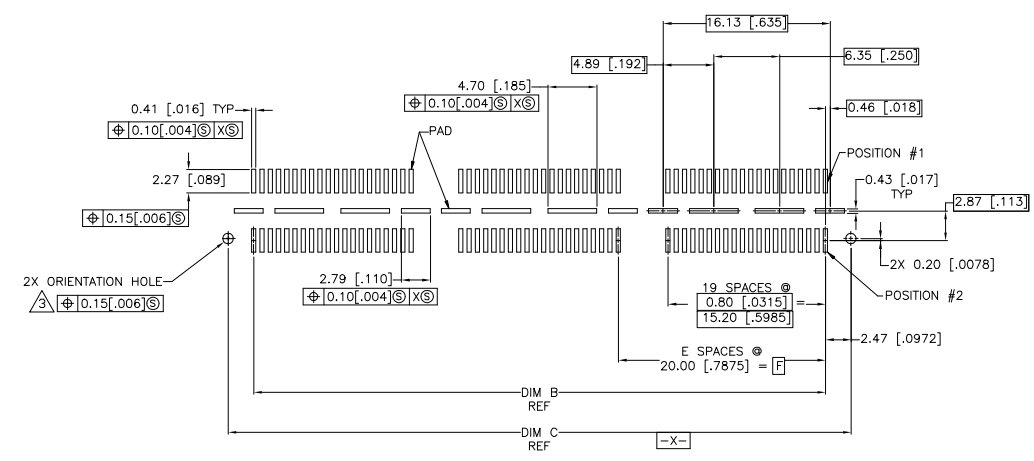
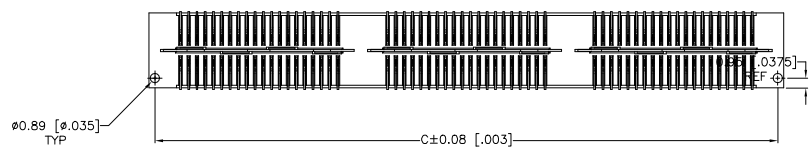
- △ HOUSING: LCP, BLACK. CONTACT & GROUND PLANE: PHOS BRONZE.
- △ CONTACT PLATING: SELECT GOLD FLASH.
- △ FOR STANDARD APPLICATIONS, ORIENTATION HOLE TO BE φ1.02 [φ.0400].



SECTION A-A



DIFFERENTIAL PAIR LOADING (BOTTOM VIEW) SCALE 2:1



RECOMMENDED PC BOARD LAYOUT (VIEWED FROM CONNECTOR SIDE)

| | | | | | | | | | | | | |
|--------------|--------------|---|--------------|---------------|--------------|---------------|----------------------|-------------|----------------|------------|-------------|-------------|
| 26.99(1.063) | 40.00(1.575) | 2 | 0.152(.0060) | 60.13(2.368) | 55.20(2.173) | 61.28(2.412) | YES | POCKET TAPE | YES | 84 | 7-1658043-3 | |
| 16.98(.669) | 20.00(.7874) | 1 | 0.102(.0040) | 40.13(1.580) | 35.20(1.386) | 41.28(1.625) | YES | POCKET TAPE | YES | 56 | 7-1658043-2 | |
| 6.99(.275) | 0(.000) | 0 | 0.102(.0040) | 20.13(.793) | 15.20(.598) | 21.29(.838) | YES | POCKET TAPE | YES | 28 | 7-1658043-1 | |
| 26.99(1.063) | 40.00(1.575) | 2 | 0.152(.0060) | 60.13(2.368) | 55.20(2.173) | 61.28(2.412) | YES | POCKET TAPE | NO | 120 | 6-1658043-3 | |
| 16.98(.669) | 20.00(.7874) | 1 | 0.102(.0040) | 40.13(1.580) | 35.20(1.386) | 41.28(1.625) | YES | POCKET TAPE | NO | 80 | 6-1658043-2 | |
| 6.99(.275) | 0(.000) | 0 | 0.102(.0040) | 20.13(.793) | 15.20(.598) | 21.29(.838) | YES | POCKET TAPE | NO | 40 | 6-1658043-1 | |
| - | 40.00(1.575) | 2 | 0.152(.0060) | 60.13(2.368) | 55.20(2.173) | 61.28(2.412) | NO | POCKET TAPE | YES | 84 | 5-1658043-3 | |
| - | 20.00(.7874) | 1 | 0.102(.0040) | 40.13(1.580) | 35.20(1.386) | 41.28(1.625) | NO | POCKET TAPE | YES | 56 | 5-1658043-2 | |
| - | 0(.000) | 0 | 0.102(.0040) | 20.13(.793) | 15.20(.598) | 21.29(.838) | NO | POCKET TAPE | YES | 28 | 5-1658043-1 | |
| - | 40.00(1.575) | 2 | 0.152(.0060) | 60.13(2.368) | 55.20(2.173) | 61.28(2.412) | NO | POCKET TAPE | NO | 120 | 4-1658043-3 | |
| - | 20.00(.7874) | 1 | 0.102(.0040) | 40.13(1.580) | 35.20(1.386) | 41.28(1.625) | NO | POCKET TAPE | NO | 80 | 4-1658043-2 | |
| - | 0(.000) | 0 | 0.102(.0040) | 20.13(.793) | 15.20(.598) | 21.29(.838) | NO | POCKET TAPE | NO | 40 | 4-1658043-1 | |
| 47.00(1.850) | 80.00(3.150) | 4 | 0.152(.0060) | 100.14(3.943) | 95.20(3.748) | 101.30(3.988) | YES | TRAY | YES | 140 | 3-1658043-5 | |
| 36.99(1.456) | 60.00(2.362) | 3 | 0.152(.0060) | 80.14(3.155) | 75.20(2.961) | 81.28(3.200) | YES | TRAY | YES | 112 | 3-1658043-4 | |
| 26.99(1.063) | 40.00(1.575) | 2 | 0.152(.0060) | 60.13(2.368) | 55.20(2.173) | 61.28(2.412) | YES | TRAY | YES | 84 | 3-1658043-3 | |
| 16.98(.669) | 20.00(.7874) | 1 | 0.102(.0040) | 40.13(1.580) | 35.20(1.386) | 41.28(1.625) | YES | TRAY | YES | 56 | 3-1658043-2 | |
| 6.99(.275) | 0(.000) | 0 | 0.102(.0040) | 20.13(.793) | 15.20(.598) | 21.29(.838) | YES | TRAY | YES | 28 | 3-1658043-1 | |
| 47.00(1.850) | 80.00(3.150) | 4 | 0.152(.0060) | 100.14(3.943) | 95.20(3.748) | 101.30(3.988) | YES | TRAY | NO | 200 | 2-1658043-5 | |
| 36.99(1.456) | 60.00(2.362) | 3 | 0.152(.0060) | 80.14(3.155) | 75.20(2.961) | 81.28(3.200) | YES | TRAY | NO | 160 | 2-1658043-4 | |
| 26.99(1.063) | 40.00(1.575) | 2 | 0.152(.0060) | 60.13(2.368) | 55.20(2.173) | 61.28(2.412) | YES | TRAY | NO | 120 | 2-1658043-3 | |
| 16.98(.669) | 20.00(.7874) | 1 | 0.102(.0040) | 40.13(1.580) | 35.20(1.386) | 41.28(1.625) | YES | TRAY | NO | 80 | 2-1658043-2 | |
| 6.99(.275) | 0(.000) | 0 | 0.102(.0040) | 20.13(.793) | 15.20(.598) | 21.29(.838) | YES | TRAY | NO | 40 | 2-1658043-1 | |
| - | 80.00(3.150) | 4 | 0.152(.0060) | 100.14(3.943) | 95.20(3.748) | 101.30(3.988) | NO | TRAY | YES | 140 | 1-1658043-5 | |
| - | 60.00(2.362) | 3 | 0.152(.0060) | 80.14(3.155) | 75.20(2.961) | 81.28(3.200) | NO | TRAY | YES | 112 | 1-1658043-4 | |
| - | 40.00(1.575) | 2 | 0.152(.0060) | 60.13(2.368) | 55.20(2.173) | 61.28(2.412) | NO | TRAY | YES | 84 | 1-1658043-3 | |
| - | 20.00(.7874) | 1 | 0.102(.0040) | 40.13(1.580) | 35.20(1.386) | 41.28(1.625) | NO | TRAY | YES | 56 | 1-1658043-2 | |
| - | 0(.000) | 0 | 0.102(.0040) | 20.13(.793) | 15.20(.598) | 21.29(.838) | NO | TRAY | YES | 28 | 1-1658043-1 | |
| - | 80.00(3.150) | 4 | 0.152(.0060) | 100.14(3.943) | 95.20(3.748) | 101.30(3.988) | NO | TRAY | NO | 200 | 1658043-5 | |
| - | 60.00(2.362) | 3 | 0.152(.0060) | 80.14(3.155) | 75.20(2.961) | 81.28(3.200) | NO | TRAY | NO | 160 | 1658043-4 | |
| - | 40.00(1.575) | 2 | 0.152(.0060) | 60.13(2.368) | 55.20(2.173) | 61.28(2.412) | NO | TRAY | NO | 120 | 1658043-3 | |
| - | 20.00(.7874) | 1 | 0.102(.0040) | 40.13(1.580) | 35.20(1.386) | 41.28(1.625) | NO | TRAY | NO | 80 | 1658043-2 | |
| - | 0(.000) | 0 | 0.102(.0040) | 20.13(.793) | 15.20(.598) | 21.29(.838) | NO | TRAY | NO | 40 | 1658043-1 | |
| G | F | E | D | C | B | A | POLYIMIDE FILM PAD ▲ | | PACKAGING TYPE | DIFF. PAIR | NO OF POS | PART NUMBER |

THIS DRAWING IS A CONTROLLED DOCUMENT. DWG. NO. 1658043-1

TE Connectivity

RECEPTACLE ASSEMBLY, VERTICAL, 0.80MM CL, MICTOR SB

DATE: 29APR2019

SCALE: 4:1

SHEET 1 OF 1

REV N