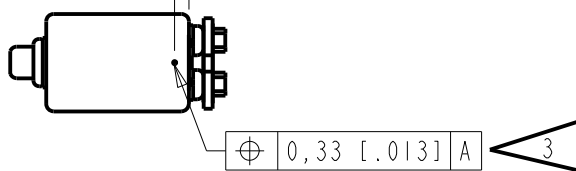
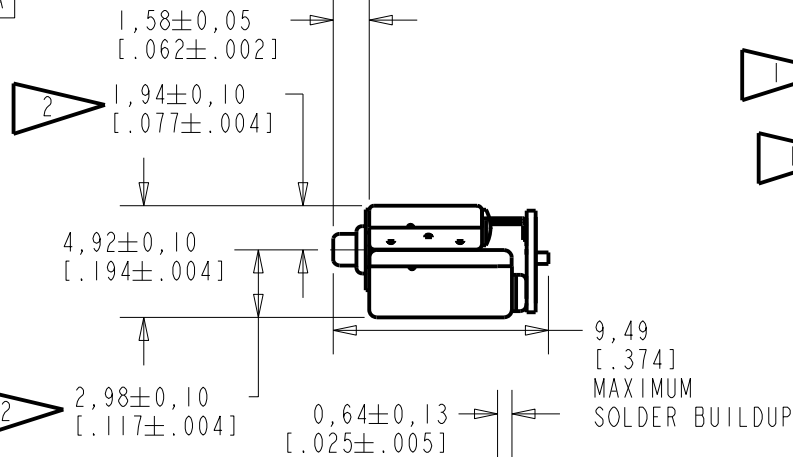
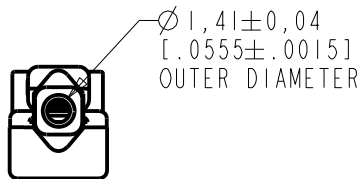
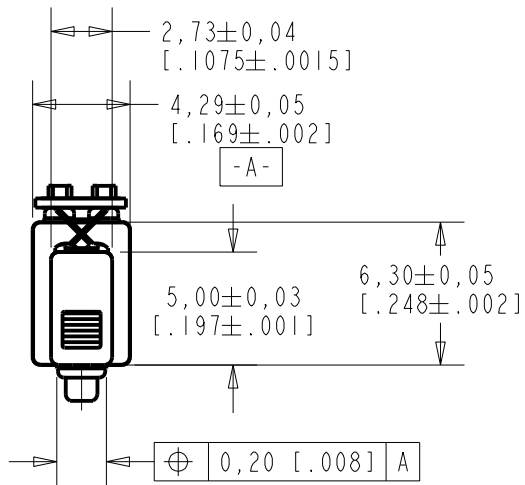
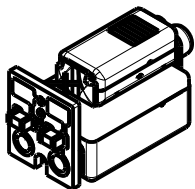
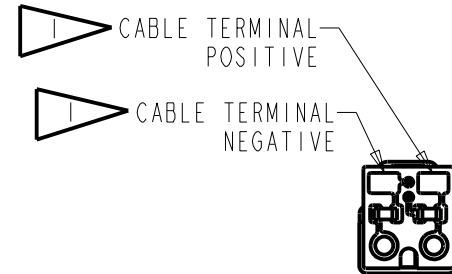


**CO-30710-000**  
SHT 1.1



NOTES:

- 1 A POSITIVE GOING VOLTAGE AT THE POSITIVE TERMINAL RELATIVE TO THE NEGATIVE TERMINAL CAUSES A DECREASE IN PRESSURE AT THE SOUND OUTLETS.
- 2 LOCATED FROM TWO SURFACES FOR CUSTOMER CONVENIENCE. ONLY APPLICABLE FROM ONE SURFACE, NOT TO BE USED TOGETHER.
- 3 IT IS IMPORTANT TO KEEP HOLE CLEAN AND CLEAR AT ALL TIMES. CLOGGING THE HOLE WILL CAUSE PERFORMANCE CHANGES.



NOMINAL WEIGHT  
.43 GRAM

DIMENSIONS IN MILLIMETERS [INCHES]

Revision	C.O. #	Implementation Date	RELEASE LEVEL	REVISION
			<b>Active</b>	<b>A</b>
A	C10111210	6-11-10		

SCALE:	<b>3:1</b>		DR. BY	DATE
DO NOT SCALE DRAWING			LSY	6-11-10
TITLE:	<b>RECEIVER</b>	<b>CO-30710-000</b>	CK. BY	DATE
	OUTLINE DRAWING	SHT 1.1	GJP	6-17-10
			APP. BY	DATE
			GJP	6-17-10

**KNOWLES ELECTRONICS**  
ITASCA, ILLINOIS U.S.A.

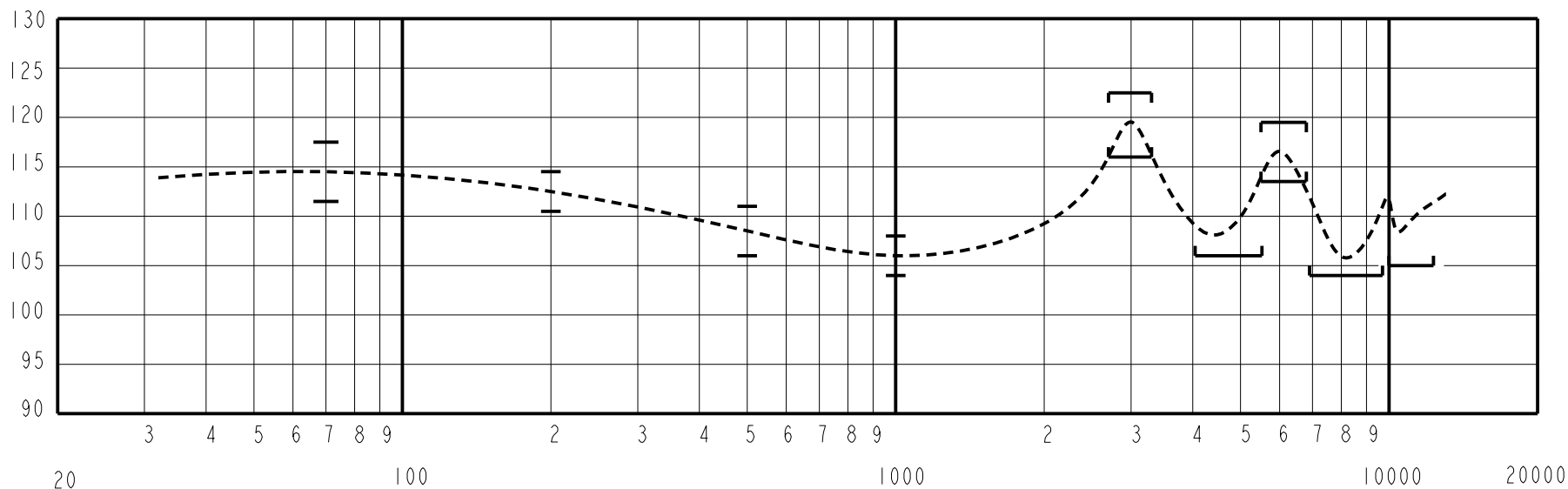
UNDAMPED MAGNETIC BALANCED ARMATURE RECEIVERS INTENDED FOR USE AS THE HIGH AND LOW FREQUENCY DRIVERS IN A Hi Fi SYSTEM. THE GO RECEIVER COMBINES A WBFK AND ED RECEIVERS COUPLED THROUGH A CIRCUIT TO PROVIDE THE RESPONSE SHAPE.

NO DAMPING

GO-30710-000  
SHEET 2.1

CONSTANT VOLTAGE DRIVE CONDITIONS  
TESTED WITH VENT UNSEALED

SENSITIVITY IN dB RELATIVE TO 1.0 VOLT / 0.1 Pa (N/M<sup>2</sup>)  
FOR CONDITIONS SHOWN BELOW



ACOUSTICAL

SENSITIVITY  
DEVICE WILL PRODUCE THE SPL LISTED BELOW UNDER TEST CONDITION IN TABLE 2.  
NOMINAL SENSITIVITY AT 1kHz IS dB RELATIVE TO 20 µPa. ALL OTHER VALUES  
IN dB RELATIVE TO THE SENSITIVITY AT 1kHz.

FREQUENCY (Hz)	MINIMUM	NOMINAL	MAXIMUM
70	+5.5	+8.5	+11.5
200	+4.5	+6.5	+8.5
500	0.0	+2.5	+5.0
1000	-2.0	106.0	+2.0
2700 - 3300	+10.5	+13.5	+16.5
4050 - 5450	0.0	---	---
5400 - 6800	+7.5	+10.5	+13.5
6900 - 9600	-7.0	---	---
10000 - 13000	-6.0	---	---

TABLE 1

TEST CONDITIONS

NOMINAL SOURCE VOLTAGE	0.146 V rms, 0 V DC BIAS
SOURCE IMPEDANCE	<1 Ohm
TUBING	7 X 2 mm + 0.188cc CAVITY
COUPLER CAVITY	IEC 60318-4("711")
TEST STATION	FCART

TABLE 2

ELECTRICAL

DC RESISTANCE	25.4 Ohms ± 10%
IMPEDANCE @ 500 Hz	51.7 Ohms ± 15%
IMPEDANCE @ 1kHz	90.0 Ohms ± 15%

TABLE 3

MAXIMUM TOTAL HARMONIC DISTORTION  
6% AT 1000 Hz AT 100 dB SPL

MECHANICAL

PORT LOCATION: 12S  
SOLDER TYPE: SAC305(LEAD FREE)

TEMPERATURE:  
OPERATING: SENSITIVITY AT 1K Hz WILL NOT VARY  
MORE THAN +1/-3 dB FROM 17°C TO 63°C.  
STORAGE: -40°C TO 63°C.

ISOLATION: CASE WILL BE ELECTRICALLY ISOLATED FROM THE COIL CIRCUIT.

Revision	C.O. #	Implementation Date	RELEASE LEVEL	REVISION
A	C10111210	6-11-10	Active	A

WHEN TEST LIMITS ARE USED TO ESTABLISH INCOMING INSPECTION ACCEPTANCE/REJECTION CRITERIA, CORRELATION OF TEST EQUIPMENT WITH KNOWLES IS ALSO REQUIRED FOR ELIMINATION OF EQUIPMENT AND TEST METHOD VARIATION	DR. BY LSY	DATE 6-11-10
TITLE: RECEIVER PERFORMANCE SPECIFICATION	APP. BY GJP	DATE 6-17-10
	APP. BY GJP	DATE 6-17-10

**KNOWLES ELECTRONICS**  
ITASCA, ILLINOIS U.S.A.

GO-30710-000  
SHT 2.1