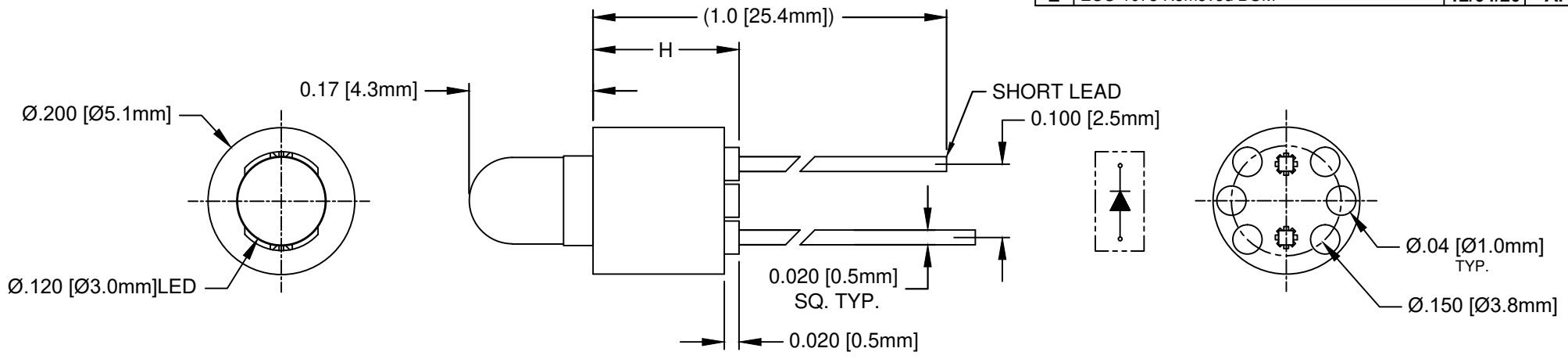


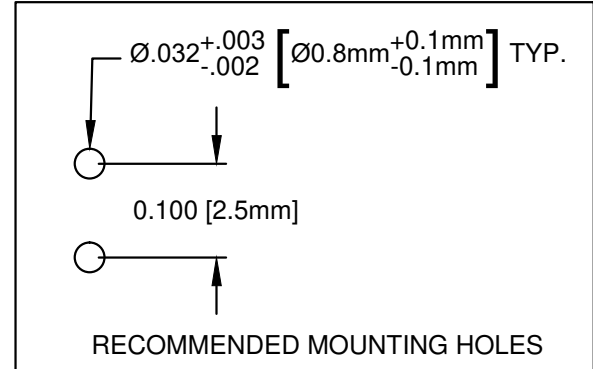
REV.	DESCRIPTION	DATE	APPROVED
A	Engineering Release	07/17/06	M. C.
B	LED Update	10/12/11	T. Y.
C	Added 3GTL-S and 3HTL-S Specs	06/25/16	J. C.
D	Updated per EOL Notice	02/12/20	A. V.
E	ECO-1073 Removed BOM	12/04/20	A. V.



PART NO.	H
LTM-120	.120(3.1)
LTM-130	.130(3.3)
LTM-140	.140(3.6)
LTM-150	.150(3.8)
LTM-160	.160(4.1)
LTM-170	.170(4.3)
LTM-180	.180(4.6)
LTM-190	.190(4.8)
LTM-200	.200(5.1)
LTM-210	.210(5.3)
LTM-220	.220(5.6)
LTM-230	.230(5.8)
LTM-240	.240(6.1)
LTM-250	.250(6.4)
LTM-260	.260(6.6)
LTM-270	.270(6.9)
LTM-280	.280(7.1)
LTM-290	.290(7.4)

PART NO.	H
LTM-300	.300(7.6)
LTM-310	.310(7.9)
LTM-320	.320(8.1)
LTM-330	.330(8.4)
LTM-340	.340(8.6)
LTM-350	.350(8.9)
LTM-360	.360(9.1)
LTM-370	.370(9.4)
LTM-380	.380(9.7)
LTM-390	.390(9.9)
LTM-400	.400(10.2)
LTM-410	.410(10.4)
LTM-420	.420(10.7)
LTM-430	.430(10.9)
LTM-440	.440(11.2)
LTM-450	.450(11.4)
LTM-460	.460(11.7)
LTM-480	.480(12.2)

PART NO.	H
LTM-490	.490(12.5)
LTM-500	.500(12.7)
LTM-520	.520(13.2)
LTM-550	.550(14.0)
LTM-570	.570(14.5)
LTM-600	.600(15.2)
LTM-620	.620(15.8)
LTM-650	.650(16.5)
LTM-670	.670(17.0)
LTM-700	.700(17.8)
LTM-720	.720(18.3)
LTM-750	.750(19.1)
LTM-770	.770(19.6)
LTM-800	.800(20.3)
LTM-820	.820(20.8)
LTM-850	.850(21.6)
LTM-870	.870(22.1)
LTM-900	.900(22.9)



EXAMPLE:
LTM5003GD
 LED Color & Lens Appearance
 LTM Height "H"
 Series

CUSTOMER USE DRAWING

ABSOLUTE MAXIMUM RATINGS (Ta=25° C)

REVERSE VOLTAGE _____ 5V
 REVERSE CURRENT _____ 100uA
 OPERATING TEMPERATURE RANGE _____ -25° C - 85° C
 STORAGE TEMPERATURE _____ -30° C - 100° C
 LEAD SOLDERING TEMPERATURE(1/16" FROM BODY) _____ 260° C FOR 5 SECONDS

STANDARD TOLERANCE (UNLESS OTHERWISE SPECIFIED)		 4 THOMAS, IRVINE, CA. 92618 TEL: (949) 951-8808 FAX: (949) 951-3974	
DECIMALS	ANGULAR		
X ±.1	X° ± 1°	TITLE: MOLDED, SELF-RETAINING T1 (3mm) LED MOUNT ASSEMBLY	
.XX ±.02		DESIGNED: S. Dam	DATE: 07/17/06
.XXX ±.010		REVISION: V. Chavez	DATE: 12/04/20
DESIGNED: S. Dam	DATE: 07/17/06	DRAWING NO: LTMXXX3XX	REVISION: E
REVISION: V. Chavez	DATE: 12/04/20	SHEET SIZE: A	CAGE CODE: 32559
CHECKED: A. Valdez	DATE: 12/04/20	SCALE: NONE	SHEET # 1 OF 2
CAD GENERATED DOCUMENT, DO NOT MEASURE DRAWING			

REV.	DESCRIPTION	DATE	APPROVED
	SEE SHEET #1		

LED Assy. No.	Chip			Lens Appearance	Electro-Optical Data			Viewing Angle 2 θ ½ (Deg)	LED P/N
	Material	Peak Wave Length λp(nm)	Emitted Color		Vf (V)		Iv (mcd)		
					TYP	MAX	TYP		
STANDARD					Data @ 20mA				
LTMXXX3BWD	GaN/SiC	430	BLUE	DIFFUSED	4.0	4.5	10	40	3BWD-S
LTMXXX3GC	GaP/GaP	568	GREEN	WATER CLEAR	2.1	2.8	40	30	3GC-S
LTMXXX3GD	GaP/GaP	568	GREEN	DIFFUSED	2.1	2.8	25	40	3GD-S
LTMXXX3SGC	GaP/GaP	568	SUPER GREEN	WATER CLEAR	2.1	2.8	50	30	3SGC-S
LTMXXX3SGD	GaP/GaP	568	SUPER GREEN	DIFFUSED	2.1	2.8	30	40	3SGD-S
LTMXXX3YD	GaAsP/GaP	590	YELLOW	DIFFUSED	2.0	2.8	20	40	3YD-S
LTMXXX3AC	GaAsP/GaP	605	AMBER	WATER CLEAR	2.0	2.8	40	30	3AC-S
LTMXXX3AD	GaAsP/GaP	605	AMBER	DIFFUSED	2.0	2.8	25	40	3AD-S
LTMXXX3SAD	AlGaInP	605	SUPER AMBER	DIFFUSED	1.8	2.4	100	40	3SAD-S
LTMXXX3HD	GaAsP/GaP	625	HE RED	DIFFUSED	2.0	2.8	30	40	3HD-S
LTMXXX3RD	GaP/GaP	700	RED	DIFFUSED	2.1	2.8	2	40	3RD-S
LTMXXX3SRC	GaAlAs/GaAs	645	SUPER RED	WATER CLEAR	1.7	2.4	60	30	3SRC-S
LTMXXX3SRD	GaAlAs/GaAs	645	SUPER RED	DIFFUSED	1.7	2.4	40	40	3SRD-S
LOW CURRENT					Data @ 2mA				
LTMXXXGDL	GaP/GaP	568	GREEN	DIFFUSED	2.1	2.6	2	40	3GDL-S
LTMXXXPGDL	GaP/GaP	555	PURE GREEN	DIFFUSED	2.1	2.6	0.2	40	3PGDL-S
LTMXXXYDL	GaAsP/GaP	590	YELLOW	DIFFUSED	2.0	2.6	2	40	3YDL-S
LTMXXXHDL	GaAsP/GaP	625	HE RED	DIFFUSED	2.0	2.6	2.5	40	3HDL-S
LTMXXXRDL	GaP/GaP	700	RED	DIFFUSED	2.1	2.6	0.5	40	3RDL-S

CUSTOMER USE DRAWING

		BIVAR[®]	
CAGE CODE	32559	DRAWING NO: LTMXXX3XX	REVISION: E
SHEET SIZE	A	SCALE: NONE	SHEET # 2 OF 2
<small>CAD GENERATED DOCUMENT, DO NOT MEASURE DRAWING</small>			