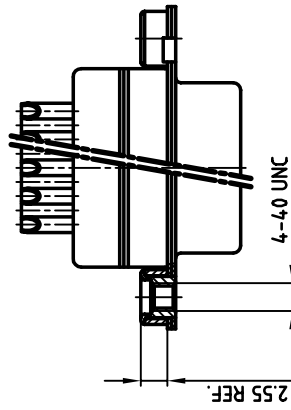
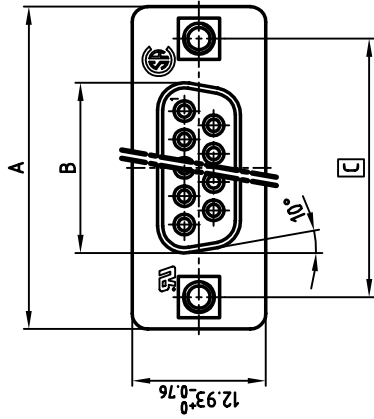
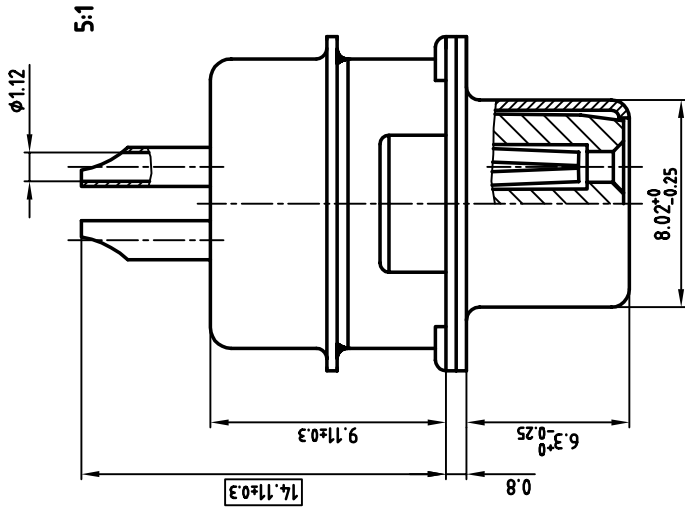


used for: D-SUB IT FILTER



NOTES:

1. METALSHELLS: STEEL; min. 320μ" TIN
2. INSULATORS: PBT GF UL 94 V-0, BLACK
3. CONTACTS: COPPER ALLOY
4. PLATING: min. 8μ" HARD GOLD OVER min. 50μ" NICKEL
SOLDER CUP ACCEPTS CABLE AWG 20
5. THREADED INSERT: COPPER ALLOY; min. 200μ" TIN over 80μ" NICKEL
6. COLLAR: COPPER ALLOY; min. 200μ" TIN over 80μ" NICKEL
7. CAPACITANCE: 2 x 1300pF ±20%
8. DIELECTRIC WITHSTANDING VOLTAGE: 424VDC
9. MAXIMUM TORQUE VALUE FOR THREAD: 6" LBS
10. = CRITICAL DIMENSION: SPC

THIS DRAWING MAY NOT BE COPIED OR REPRODUCED IN ANY WAY, AND MAY NOT BE PASSED ON TO A THIRD PARTY WITHOUT WRITTEN PERMISSION
OWNERSHIP AND COPYRIGHT OF CONEC GMBH DO NOT ALTER CAD DRAWING BY HAND

| | | | |
|--|--------|-----------------|---------------------|
| CONEC CORPORATION BRAMPTON, ONTARIO | | tolerance | scale: material: |
| 2001 | date | 2001 | 2:1 (5:1) |
| drawn | 29.03. | name | SEE NOTES |
| appl. | 29.03. | Panel | |
| norm | | E. Mickenbecker | |
| d-old | | DIN 41552 | |

| | | | |
|-------|-------------|-----------|---------------------|
| CONEC | | tolerance | scale: material: |
| rev. | description | date | name |
| | | | |
| | | | |
| | | | |
| | | | |
| | | | |
| | | | |
| | | | |
| | | | |

| | | | |
|---|--|--------------------------------------|--|
| title: | | dwg no: | |
| D-SUB IT FILTER FEMALE SOLDER CUP 9-37pos. with threaded insert | | AutoCAD 2000 DIN-A 3 sh:1/1 | |
| part no: | | SEE TABLE | |
| 24K1A102A | | 24K1A102A | |

| No. of pos. | A ^{-0.76} | B ^{-0.25} | C | Part No. |
|-------------|--------------------|--------------------|---|------------|
| 9 | 31.19 | 16.46 | 25.00 ^{+0.12} _{-0.13} | 242A29260X |
| 15 | 39.52 | 24.79 | 33.30 ^{+0.15} _{-0.1} | 242A29270X |
| 25 | 53.42 | 38.50 | 47.04 ^{+0.13} | 242A29280X |
| 37 | 69.70 | 54.96 | 63.50 ^{+0.13} | 242A29290X |