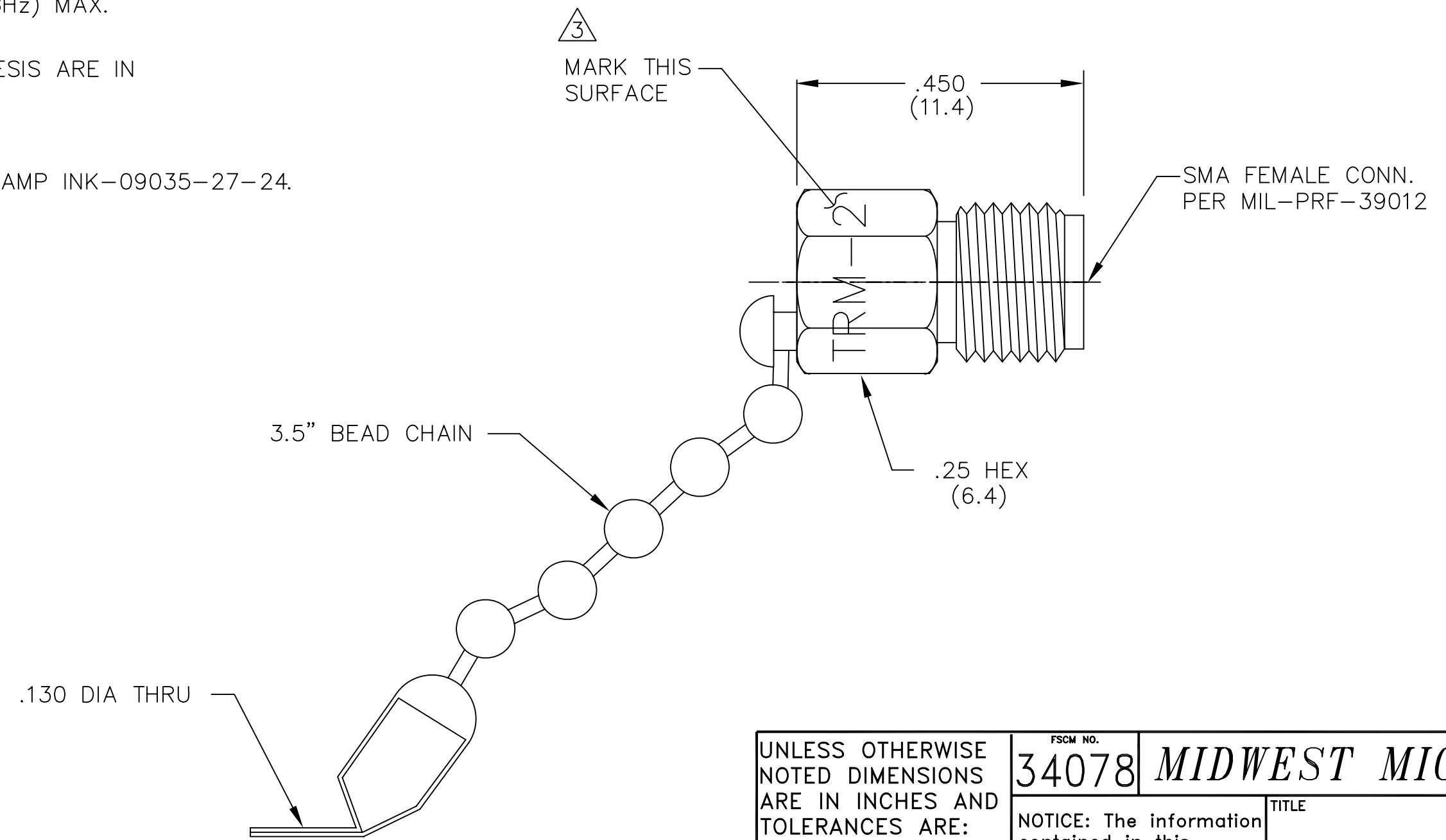


NOTES:

- 1.0 ELECTRICAL SPECIFICATIONS:
 1.1 FREQUENCY RANGE: DC to 8.0 GHz
 1.2 MAXIMUM INPUT POWER: 0.5 WATTS @ +25°C
 DERATED LINEARLY TO 0 WATTS @ +125°C
 1.3 OPERATING TEMP. RANGE: -55°C to +125°C
 1.4 IMPEDANCE: 50 OHMS
 1.5 VSWR: 1.05 + 0.008f(GHz) MAX.

2.0 DIMENSIONS IN PARENTHESIS ARE IN MILLIMETERS.

 MARKING:
 MARK UNIT WITH INKSTAMP INK-09035-27-24.



DATE	3/8/93
DESCRIPTION	RELEASED
REV.	A
	B
	ECN 15059
	ECN 18767
	10/9/02

UNLESS OTHERWISE NOTED DIMENSIONS ARE IN INCHES AND TOLERANCES ARE: 3 PLACE DECIMALS ±.005 2 PLACE DECIMALS ±.02 FRACTIONS ±1/64 PARALLELITY: T.I.R. _____ FLATNESS: T.I.R. _____ CONCENTRICITY: T.I.R. _____ ANGLES AND PERPENDICULARITY: ±1'	FSCM NO. 34078	MIDWEST MICROWAVE	
	NOTICE: The information contained in this drawing is proprietary and must not be used without the permission of Midwest Microwave		TITLE TERMINATION
DRAWN/DATE A.BEATTY 3/4/93	ENG./DATE G.KOZAK 3/5/93	DRAWING NUMBER TRM-2446-FC-SMA-02	
CHECKED/DATE M.HOLLMAN 3/4/93	APPROVED/DATE	SCALE: 5=1	SHEET 1 of 1