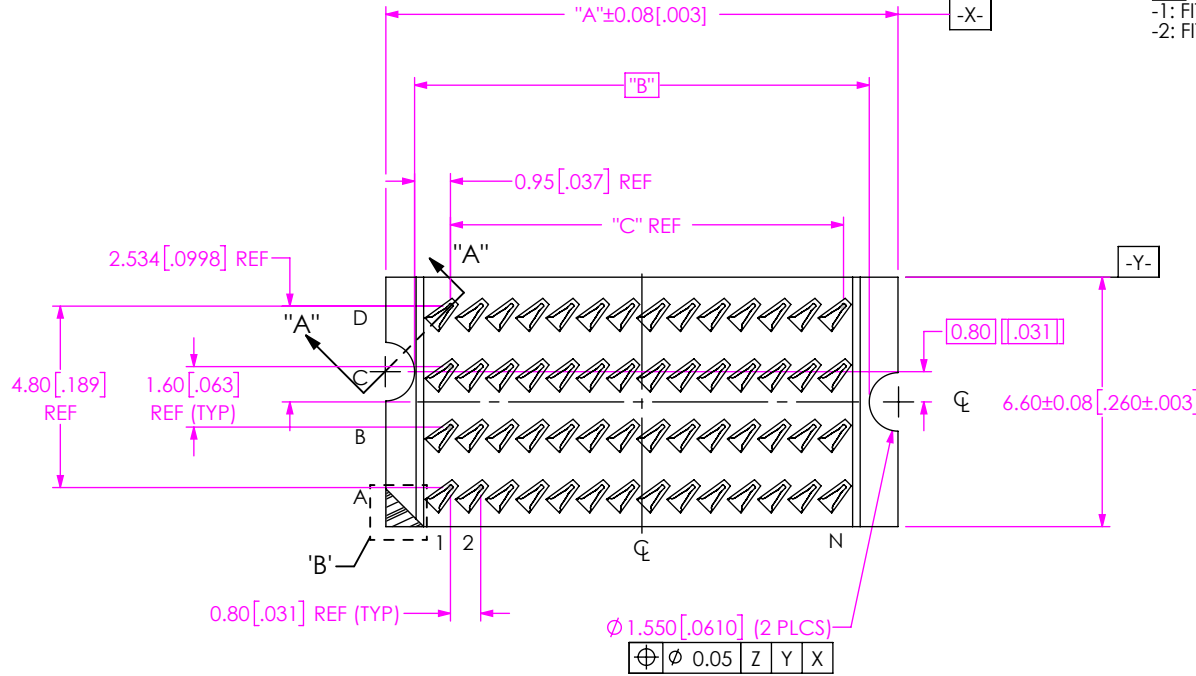


DO NOT
SCALE FROM
THIS PRINT



ZCI-X-XX-X

SIZE
-1: FITS ZCC-1-XX
-2: FITS ZCC-2-XX

PAIRS
-08: SIZE -1 ONLY
-16: SIZE -2 ONLY

PLATING SPECIFICATION

-Z: 6µ" MIN Au OVER 40-100µ" Ni

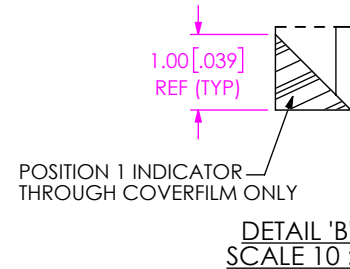
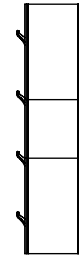
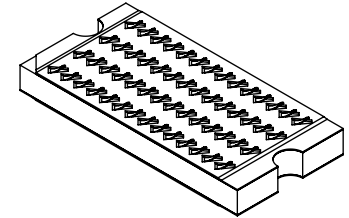


FIG 1
ZCI-2-16-X SHOWN

ZCI-X-XX-X BOM					
ITEM NO.	PART NUMBER	DESCRIPTION	-1 QTY	-2 QTY	MATERIAL
1	FOIL-0001-NS-01	CONTACT	.00625	.01250	BeCu
2	FOIL-0001-FS-01	CONTACT	.00625	.01250	BeCu
3	PCB-(SEE TABLE 1)	CORE	.00625	.01250	FR4
4	FR1515-6X9-0001	BOND PLY	.01250	.02500	ADHESIVE/POLYIMIDE FILM
5	ZCF-BL03-FR01-1209-BK	COVERFILM	.00625	.01250	ADHESIVE/POLYIMIDE FILM
6	TY-ZCI00X	TRAY	.01587	.01786	CLEAR ESD COATED RPET

TABLE 1							
SIZE	"A"	"B"	"C"	N	TRAY	CORE	CAM DATA
-1	8.75 [0.344]	7.230 [0.285]	5.60 [0.220]	8	TY-ZCI001	PCB-107149-ZCI-1-08-01	ZR-00028
-2	13.55 [0.533]	12.030 [0.474]	10.40 [0.409]	14	TY-ZCI002	PCB-107149-ZCI-2-16-01	ZR-00029

NOTES:

- REPRESENTS A CRITICAL DIMENSION.
- CONTACT POINTS ARE MEASURED IN UNCOMPRESSED STATE.
- ELECTRICAL TEST: 100% ISOLATION & CONTINUITY TESTS REQUIRED
100% HI-POT REQUIRED AT 300V
MINIMUM PIN TO PIN ISOLATION TO BE 200 MEGA OHMS
- MAXIMUM ALLOWABLE EDGE BURR AFTER DICING: 0.125[.0050]
NO BURR ALLOWED ON TOP OR BOTTOM
- PARTS TO BE BUILT PER NA-ZR-WI-3015-M WORKMANSHIP STANDARD.
- PARTS TO BE PACKAGED IN TRAYS.
- TOTAL STACK HEIGHT OF MATERIAL LAYERS IS REPRESENTED IN CONTACT ARRAY AREA. AREAS OUTSIDE OF THE ARRAY HAVE THE FOIL LAYER REMOVED RESULTING IN THINNER PROFILE DIMENSION OUTSIDE OF ARRAY.

UNLESS OTHERWISE SPECIFIED,
DIMENSIONS ARE IN MILLIMETERS.

TOLERANCES ARE:
DECIMALS ANGLES
X.X: ±0.3 [.01] 2°
X.XX: ±0.13 [.005]
X.XXX: ±0.051 [.0020]

PROPRIETARY NOTE

THIS DOCUMENT CONTAINS CONFIDENTIAL AND PROPRIETARY INFORMATION AND ALL DESIGN, MANUFACTURING, REPRODUCTION, USE, PATENT RIGHTS AND SALES RIGHTS ARE EXPRESSLY RESERVED BY SAMTEC, INC. THIS DOCUMENT SHALL NOT BE DISCLOSED, IN WHOLE OR PART, TO ANY UNAUTHORIZED PERSON OR ENTITY NOR REPRODUCED, TRANSFERRED OR INCORPORATED IN ANY OTHER PROJECT IN ANY MANNER WITHOUT THE EXPRESS WRITTEN CONSENT OF SAMTEC, INC.

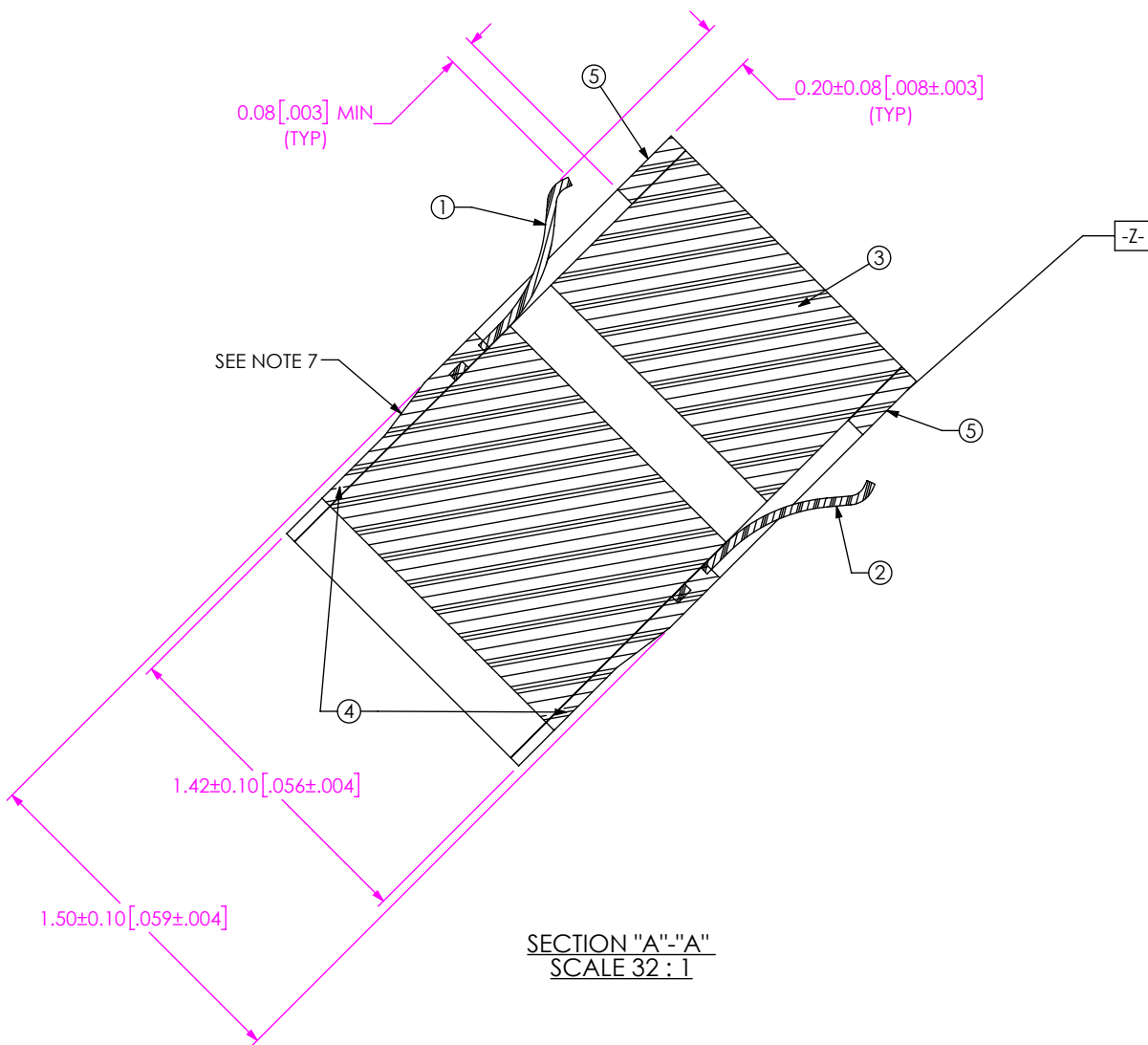
MATERIAL: DO NOT SCALE DRAWING SHEET SCALE: 2:1
CONTACT: BeCu
CORE: FR4
COVERLAY: POLYIMIDE

F:\DWG\MISC\MKTG\ZCI-X-XX-X-MKT.SLDDRW



520 PARK EAST BLVD., NEW ALBANY, IN 47150
PHONE: 812-944-6733 FAX: 812-948-5047
e-Mail: info@SAMTEC.com code 53322

DESCRIPTION:	ZRDP INTERPOSER
DWG. NO.	ZCI-X-XX-X
BY: D.SCHMELZ 3/21/2014	SHEET 1 OF 2



• PROPRIETARY NOTE •
 THIS DOCUMENT CONTAINS CONFIDENTIAL AND PROPRIETARY INFORMATION AND ALL DESIGN, MANUFACTURING, REPRODUCTION, USE, PATENT RIGHTS AND SALES RIGHTS ARE EXPRESSLY RESERVED BY SAMTEC, INC. THIS DOCUMENT SHALL NOT BE DISCLOSED, IN WHOLE OR PART, TO ANY UNAUTHORIZED PERSON OR ENTITY NOR REPRODUCED, TRANSFERRED OR INCORPORATED IN ANY OTHER PROJECT IN ANY MANNER WITHOUT THE EXPRESS WRITTEN CONSENT OF SAMTEC, INC.

samtec
 520 PARK EAST BLVD, NEW ALBANY, IN 47150
 PHONE: 812-944-6733 FAX: 812-948-5047
 e-Mail info@SAMTEC.com code 55322

DO NOT SCALE DRAWING
 SHEET SCALE: 2:1

DESCRIPTION:	ZRDP INTERPOSER
DWG. NO.	ZCI-X-XX-X
BY: D.SCHMELZ	3/21/2014 SHEET 2 OF 2