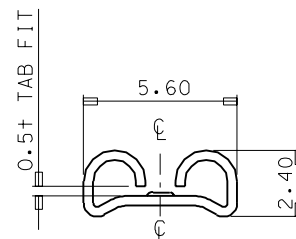
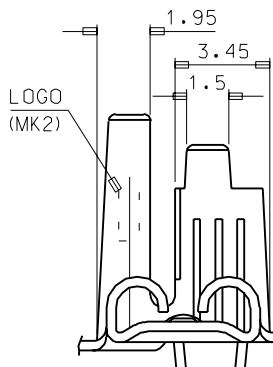
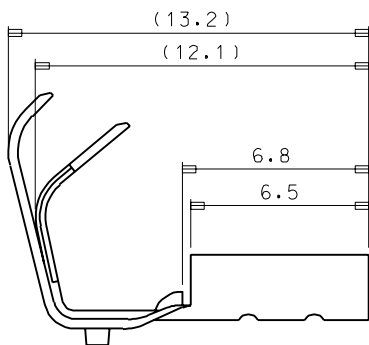
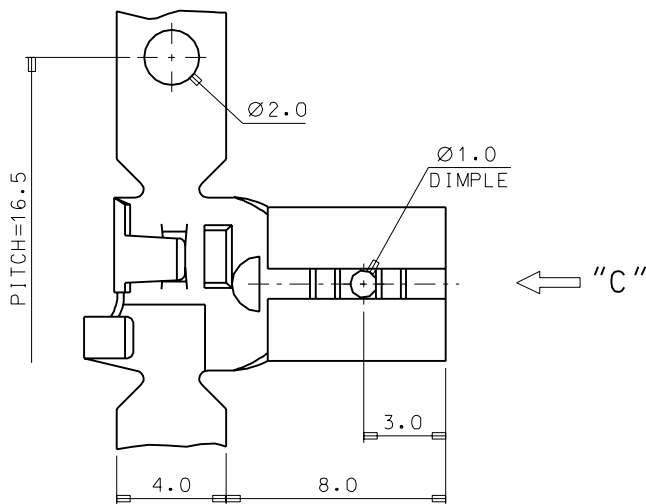


ENG. NO
SD 35718-12**

EDP NO.

SIMILAR ITEM

PROJECT NO.



VIEW "C"

NOTES

1. MATERIAL : 35718-12*0 (BRASS)
35718-12*1 (PHOSPHOR BRONZE)
2. THICKNESS : 0.35mm
3. FINISH : 35718-120* (UNPLATED)
35718-121* (POST PLATED TIN)
4. GENERAL TOLERANCE : 1PLCS : ±0.3
2PLCS : ±0.2

WIRE RANGE AWG #20 - #16 (0.52-1.31mm ²)				MATERIAL SEE NOTES				MOLEX-KOREA CO.,LTD.	
INSULATION RANGE Ø 3.1 MAX.				GENERAL TOLERANCE DIMENSION : ANGLE :				DRAWN BY W. Y. YANG	CHK'D BY
DIE FEED: ---				B	REVISED	KOR7 -0085	97 7.16	APP'D BY	SCALE 6/1
APPLICATOR FEED: 16.5				A	NEW RELEASED	93-003	93 2.27	TITLE: .187 FLAG RECEPTACLE	
O'TY/ REEL OR PACK 4,000 O'TY/REEL				LTR	REVISION RECORD	ECN	DATE	SHEET 1 of 1	
				REVISE ONLY ON CAD SYSTEM				ENG. NO. SD 35718-12**	
								REV B	