

LM3S2965 EVALUATION KIT README FIRST

Stellaris® LM3S2965 Evaluation Kit

The Stellaris LM3S2965 Evaluation Kit for CAN provides a low-cost way to start designing controller area network (CAN) applications with Stellaris microcontrollers. The LM3S2965 Evaluation Board (EVB) can function as either a complete evaluation target, or as a debugger interface to any external Stellaris device. The included USB cable is all that is needed to provide power and communication to the host PC.

LM3S2965 Evaluation Board

Requirements

- You have a PC, with a USB interface, running Microsoft® Windows 2000, XP, or Vista
- You have the Stellaris LM3S2965 Evaluation Kit Documentation and Software CD

Board Set-Up

The LM3S2965 Evaluation Board is configured for immediate use. First connect the LM3S2965 Evaluation Board to the LM3S2110 CAN Device Board using the 10-way ribbon cable included in the kit. The cable inserts into the header labeled CAN on each board. To power the EVB, use the USB cable supplied in the kit. Connect the mini-b (smaller) end of the USB cable to the connector labeled “USB TO JTAG/SWD” on the EVB. Connect the other end (Type A) to a free USB port on your host PC. The USB is capable of sourcing up to 500 mA for each attached device, which is sufficient for the evaluation board. If connecting the board through a USB hub, it must be a powered hub.

LM3S2965 EVALUATION KIT README FIRST

When you plug in the EVB for the first time, Windows starts the Found New Hardware Wizard and asks if Windows can connect to Windows Update to search for software. Select “No, not this time” and then click Next.



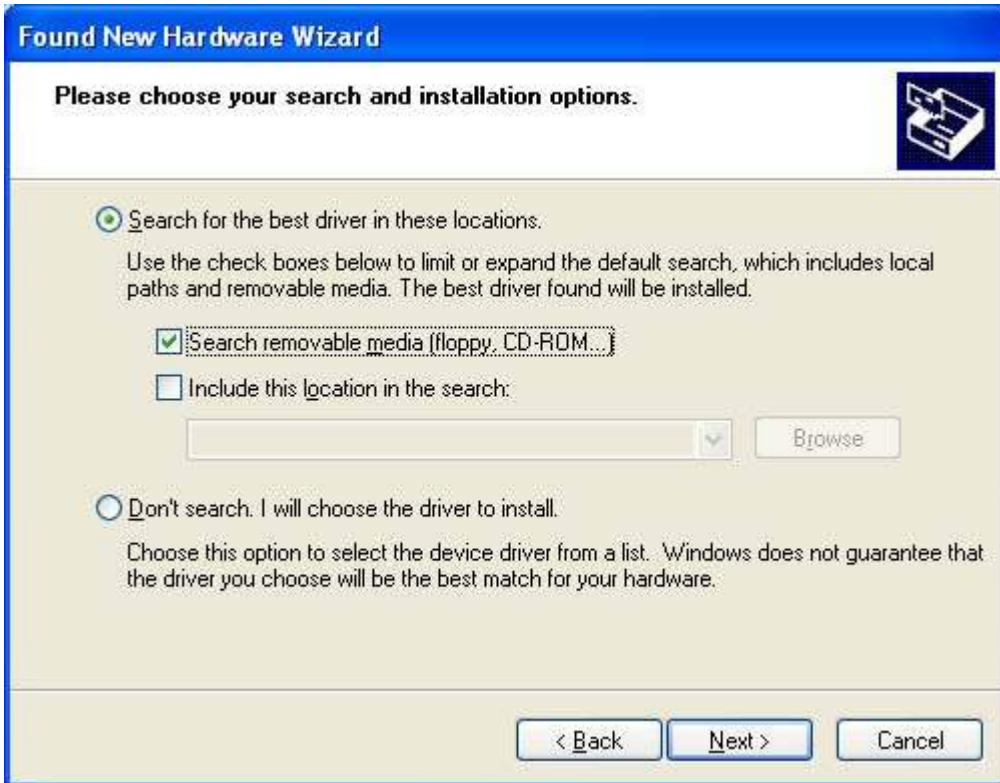
LM3S2965 EVALUATION KIT README FIRST

Next, the Found New Hardware Wizard asks you from where to install the software. Select “Install from a list or specific location (Advanced)” and click Next.



LM3S2965 EVALUATION KIT README FIRST

Make sure the “Documentation and Software” CD that came with the Evaluation Kit is in your CD-ROM drive. Select “Search for the best driver in these locations,” and check the “Search removable media (floppy, CD-ROM...)” option. Click Next.



LM3S2965 EVALUATION KIT README FIRST

A warning may pop up during the Hardware Installation like the one below; click Continue Anyway.



LM3S2965 EVALUATION KIT README FIRST

Windows finishes installing the drivers for “Stellaris Evaluation Board A.” When the driver install is finished, the Found New Hardware Wizard window appears like the one below. Click Finish to close the dialog box.



You have just installed the drivers for “Stellaris Evaluation Board A.” The USB device built into the EVB is a composite USB device. After you click Finish, Windows automatically installs a driver for the “Stellaris Evaluation Board B” part of the composite USB device. Follow the same instructions as above to install the drivers for this device.

The Found New Hardware Wizard appears one last time. This is to install the drivers for the “Stellaris Virtual COM Port.” Again, follow the same instructions to install the drivers for this device.

Now all of the hardware drivers for the LM3S2965 Evaluation Board have been installed. These drivers give the debugger access to the JTAG interface and the host PC access to the Virtual COM Port.

With the drivers installed, Windows automatically detects any new Stellaris boards that you attach, and install the drivers for you.

LM3S2965 EVALUATION KIT

README FIRST

Quickstart Application

The LM3S2965 Evaluation Board comes preprogrammed with a quickstart application. Once you have powered the board, this application runs automatically. You have probably already noticed this running as you installed the drivers. A splash screen appears on the OLED display for a few seconds before the application begins.

The quickstart application is a game in which you navigate a character through a maze. Use the directional push buttons to move the character, and the user pushbutton (SELECT) to fire a missile to destroy the monsters. Score accumulates for maze progress and the number of monsters destroyed. The game lasts for only one character “life”; the score displays at the end of the game.

Since the OLED display on the evaluation board has burn-in characteristics similar to a CRT, the application also contains a screen saver. The screen saver only becomes active if two minutes have passed without the user pushbutton being pressed while waiting to start the game (that is, the screen saver never appears during game play).

After two minutes of running the screen saver, the display turns off and the user LED blinks. Exit either mode of screen saver by pressing the user pushbutton (SELECT). Press the button again to start the game.

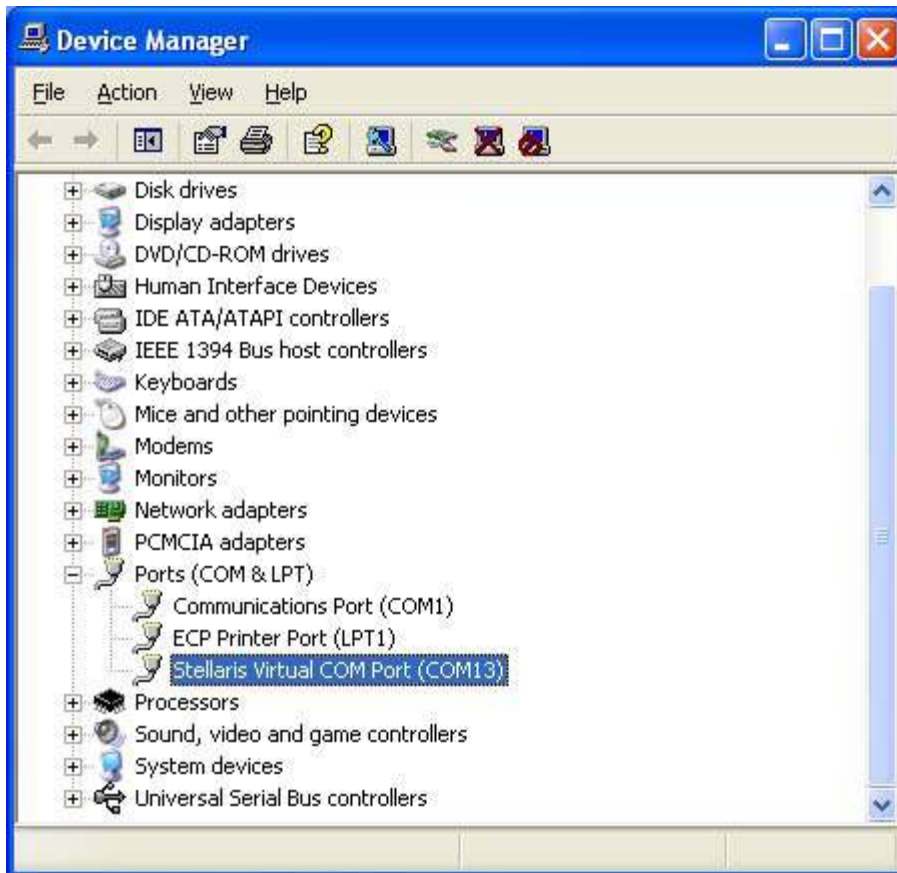
The LM3S2965 Evaluation Board uses the CAN module to communicate with the included CAN device board. During game play, the volume is adjusted by using the “Up” and “Down” buttons on the CAN device board. The Status LED on the CAN device board will blink during various portions of the quick start application.

While the game is being played, a running tally of the score is output through UART0 of the LM3S2965 microcontroller. UART0 is connected to the FTDI’s second serial channel. This serial channel is available to Windows as a Virtual COM port. To view the score, open up a terminal application such as HyperTerminal. Connect using COM#, where # is the number Windows has assigned the Virtual COM port. Set the serial connection to a baud rate of 115200, 8 data bits, no parity, 1 stop bit, and no flow control.

To determine which COM# Windows has assigned to the Virtual COM port on the LM3S2965 microcontroller, follow these steps:

- 1) From the Start Menu, select Control Panel, then double-click the System icon.
- 2) Select the Hardware tab.
- 3) Click on the Device Manager button.
- 4) Click on the + symbol to expand the Ports (COM & LPT) group.
- 5) “Stellaris Virtual COM Part (COM#)” is listed as shown in the figure below. This COM# is the device you connect to using your terminal application. In this example, the COM port is COM13.

LM3S2965 EVALUATION KIT README FIRST



Software Development Tools

The next step is to install and run the software development tools included in the evaluation kit. For more information, see the quickstart guides included on the Stellaris LM3S2965 Evaluation Kit CD. Additional tools may be available through the www.ti.com/stellaris web site.

LM3S2965 EVALUATION KIT README FIRST

References

The following references are included on the Stellaris LM3S2965 Evaluation Kit Documentation and Software CD and are also available for download at www.ti.com/stellaris:

- *Stellaris LM3S2965 Evaluation Kit User's Manual*
- StellarisWare® Driver Library
- *StellarisWare® Driver Library User's Manual*
- Stellaris LM3S2965 Microcontroller Data Sheet

Copyright © 2007–2010 Texas Instruments, Inc. All rights reserved. Stellaris and StellarisWare are registered trademarks of Texas Instruments. ARM and Thumb are registered trademarks, and Cortex is a trademark of ARM Limited. Other names and brands may be claimed as the property of others.

Texas Instruments
108 Wild Basin Rd., Suite 350
Austin, TX 78746
<http://www.ti.com/stellaris>



IMPORTANT NOTICE

Texas Instruments Incorporated and its subsidiaries (TI) reserve the right to make corrections, modifications, enhancements, improvements, and other changes to its products and services at any time and to discontinue any product or service without notice. Customers should obtain the latest relevant information before placing orders and should verify that such information is current and complete. All products are sold subject to TI's terms and conditions of sale supplied at the time of order acknowledgment.

TI warrants performance of its hardware products to the specifications applicable at the time of sale in accordance with TI's standard warranty. Testing and other quality control techniques are used to the extent TI deems necessary to support this warranty. Except where mandated by government requirements, testing of all parameters of each product is not necessarily performed.

TI assumes no liability for applications assistance or customer product design. Customers are responsible for their products and applications using TI components. To minimize the risks associated with customer products and applications, customers should provide adequate design and operating safeguards.

TI does not warrant or represent that any license, either express or implied, is granted under any TI patent right, copyright, mask work right, or other TI intellectual property right relating to any combination, machine, or process in which TI products or services are used. Information published by TI regarding third-party products or services does not constitute a license from TI to use such products or services or a warranty or endorsement thereof. Use of such information may require a license from a third party under the patents or other intellectual property of the third party, or a license from TI under the patents or other intellectual property of TI.

Reproduction of TI information in TI data books or data sheets is permissible only if reproduction is without alteration and is accompanied by all associated warranties, conditions, limitations, and notices. Reproduction of this information with alteration is an unfair and deceptive business practice. TI is not responsible or liable for such altered documentation. Information of third parties may be subject to additional restrictions.

Resale of TI products or services with statements different from or beyond the parameters stated by TI for that product or service voids all express and any implied warranties for the associated TI product or service and is an unfair and deceptive business practice. TI is not responsible or liable for any such statements.

TI products are not authorized for use in safety-critical applications (such as life support) where a failure of the TI product would reasonably be expected to cause severe personal injury or death, unless officers of the parties have executed an agreement specifically governing such use. Buyers represent that they have all necessary expertise in the safety and regulatory ramifications of their applications, and acknowledge and agree that they are solely responsible for all legal, regulatory and safety-related requirements concerning their products and any use of TI products in such safety-critical applications, notwithstanding any applications-related information or support that may be provided by TI. Further, Buyers must fully indemnify TI and its representatives against any damages arising out of the use of TI products in such safety-critical applications.

TI products are neither designed nor intended for use in military/aerospace applications or environments unless the TI products are specifically designated by TI as military-grade or "enhanced plastic." Only products designated by TI as military-grade meet military specifications. Buyers acknowledge and agree that any such use of TI products which TI has not designated as military-grade is solely at the Buyer's risk, and that they are solely responsible for compliance with all legal and regulatory requirements in connection with such use.

TI products are neither designed nor intended for use in automotive applications or environments unless the specific TI products are designated by TI as compliant with ISO/TS 16949 requirements. Buyers acknowledge and agree that, if they use any non-designated products in automotive applications, TI will not be responsible for any failure to meet such requirements.

Following are URLs where you can obtain information on other Texas Instruments products and application solutions:

Products

Amplifiers	amplifier.ti.com
Data Converters	dataconverter.ti.com
DLP® Products	www.dlp.com
DSP	dsp.ti.com
Clocks and Timers	www.ti.com/clocks
Interface	interface.ti.com
Logic	logic.ti.com
Power Mgmt	power.ti.com
Microcontrollers	microcontroller.ti.com
RFID	www.ti-rfid.com
RF/IF and ZigBee® Solutions	www.ti.com/lprf

Applications

Audio	www.ti.com/audio
Automotive	www.ti.com/automotive
Broadband	www.ti.com/broadband
Digital Control	www.ti.com/digitalcontrol
Medical	www.ti.com/medical
Military	www.ti.com/military
Optical Networking	www.ti.com/opticalnetwork
Security	www.ti.com/security
Telephony	www.ti.com/telephony
Video & Imaging	www.ti.com/video
Wireless	www.ti.com/wireless

Mailing Address: Texas Instruments, Post Office Box 655303, Dallas, Texas 75265
Copyright © 2009, Texas Instruments Incorporated