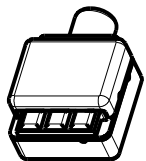
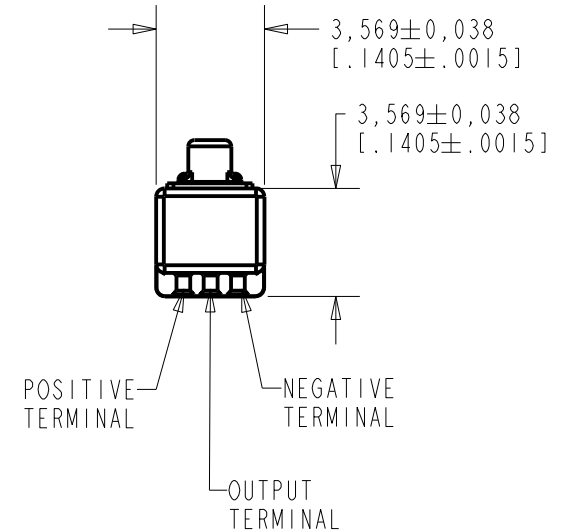
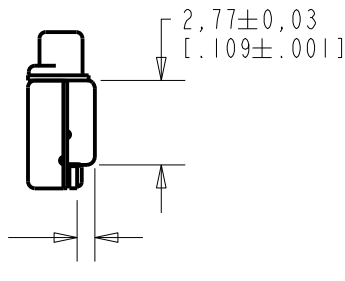
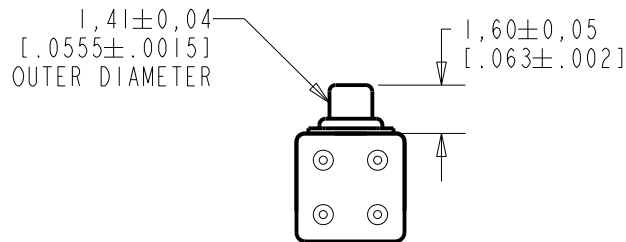
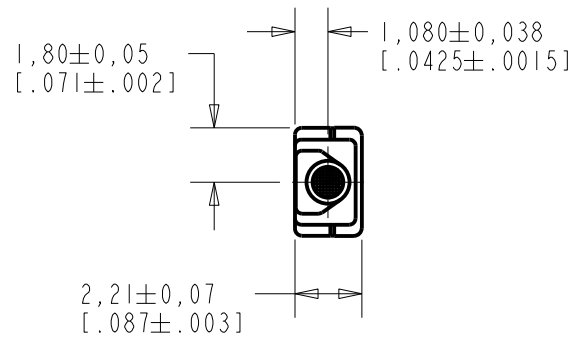


EM-24368-C36

SHT 1.1

NOTE:

1. INCREASED PRESSURE AT SOUND INLET CAUSES A POSITIVE GOING VOLTAGE TO APPEAR AT THE OUTPUT TERMINAL, RELATIVE TO THE NEGATIVE TERMINAL.



NOMINAL WEIGHT
.08 GRAM

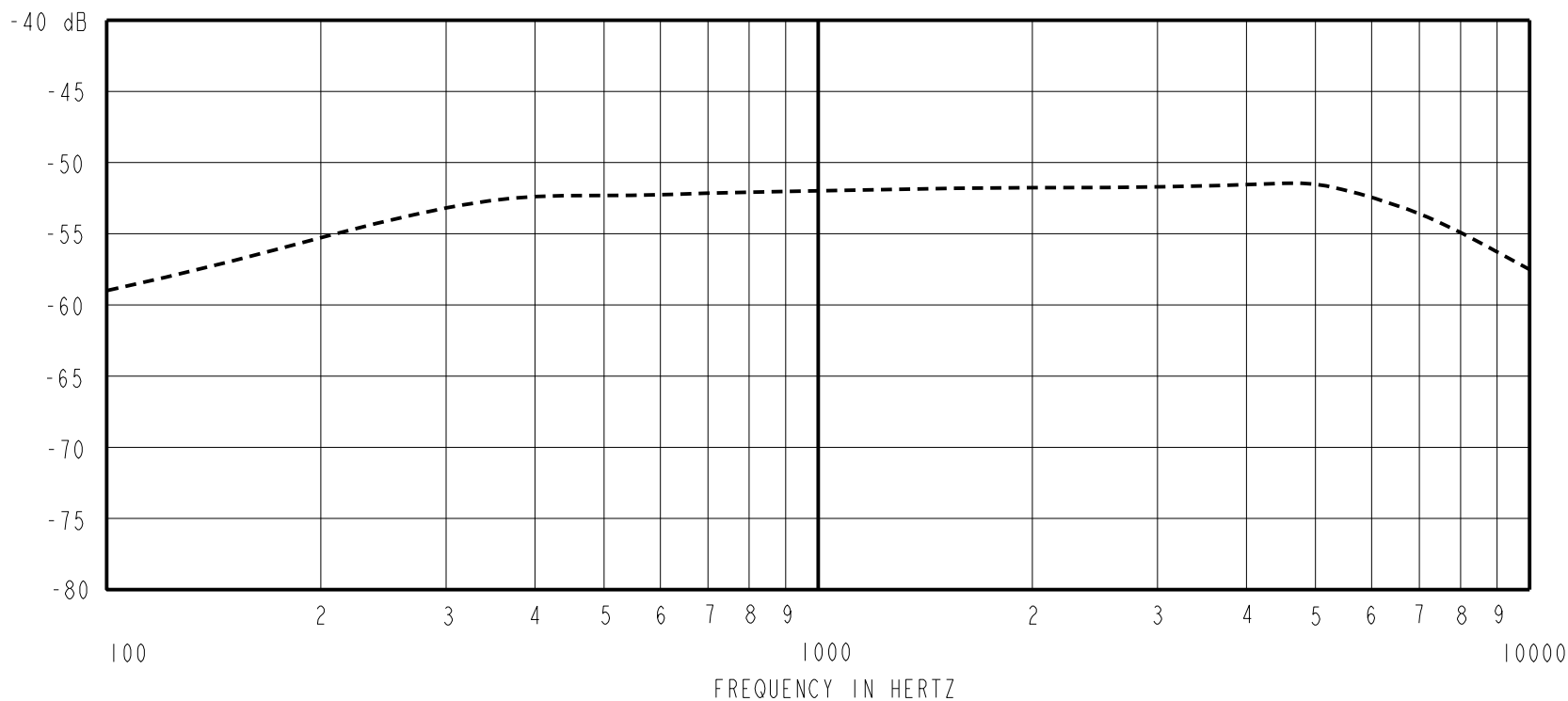
DIMENSIONS IN MILLIMETERS [INCHES]

| Revision | C.O. # | Implementation Date | RELEASE LEVEL | REVISION |
|----------|-----------|---------------------|---------------|----------|
| K | MI0106036 | 5-25-15 | Active | K |
| J | MI0105775 | 11-18-14 | | |

| | | |
|----------------------|--|---------------|
| SCALE: 4:1 | | DR. BY: DATE |
| DO NOT SCALE DRAWING | | MMM 7-7-05 |
| TITLE: MICROPHONE | | CK. BY: DATE |
| OUTLINE DRAWING | | GJP 7-8-05 |
| EM-24368-C36 | | APP. BY: DATE |
| SHT 1.1 | | GJP 7-8-05 |

KNOWLES ELECTRONICS
ITASCA, ILLINOIS U.S.A.

SENSITIVITY IN dB RELATIVE TO 1.0 VOLT/0.1 Pa (N/M²)
FOR CONDITIONS SHOWN BELOW.



| FREQUENCY | SENSITIVITY | | | DEVICE CONFORMITY | |
|-----------|-------------|-------|-------|------------------------------|------|
| | MIN. | NOM. | MAX. | RANGE OF DEVIATION FROM 1KHz | |
| 100 | --- | -59.0 | --- | -10.0 | -3.0 |
| 1000 | -55.0 | -52.0 | -49.0 | 0.0 | 0.0 |
| 4800 | --- | -51.5 | --- | -3.0 | +3.0 |

- NOTES: 1. CASE CONNECTED TO NEGATIVE TERMINAL.
 2. MICROPHONE TO BE FUNCTIONAL WITH 1.6 VDC SUPPLY.
 3. TYPICAL SENSITIVITY TO HUMIDITY AT 1000Hz IS 0.03 dB/%RH
 4. SENSITIVITY AND NOISE VALUES INDICATED ON THIS SPECIFICATION ARE VALID AT 50% HUMIDITY.

| PORT LOCATION | DC SUPPLY | AMPLIFIER CURRENT DRAIN | SENSITIVITY CHANGE ON REDUCING SUPPLY TO 0.9VDC | "A" WEIGHTED NOISE (1 kHz EQUIV. SPL) | OUTPUT IMPEDANCE OHMS | | |
|---------------|-----------|-------------------------|---|---------------------------------------|-----------------------|------|------|
| | | | | | MIN. | NOM. | MAX. |
| 12S | 1.3V | 50 µA MAX. | 3 dB MAX. | 28.0 dB MAX. | 2800 | 4400 | 6800 |

| Revision | C.O. # | Implementation Date | RELEASE LEVEL | REVISION |
|----------|-----------|---------------------|---------------|----------|
| K | M10106036 | 5-25-15 | Active | K |
| J | M10105775 | 11-18-14 | | |

KNOWLES ELECTRONICS
ITASCA, ILLINOIS U.S.A.

WHEN TEST LIMITS ARE USED TO ESTABLISH INCOMING INSPECTION ACCEPTANCE/REJECTION CRITERIA, CORRELATION OF TEST EQUIPMENT WITH KNOWLES IS ALSO REQUIRED FOR ELIMINATION OF EQUIPMENT AND TEST METHOD VARIATION

TITLE: **MICROPHONE**
PERFORMANCE SPECIFICATION

EM-24368-C36
SHT 2.1

| DR. BY | DATE |
|---------|--------|
| MMM | 7-7-05 |
| CK. BY | DATE |
| GJP | 7-8-05 |
| APP. BY | DATE |
| GJP | 7-8-05 |