

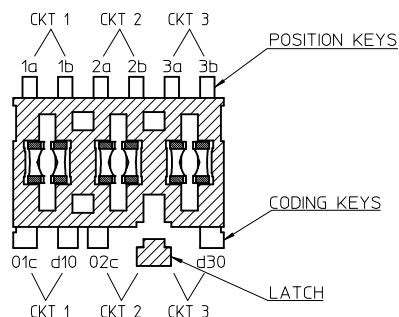
NOTES:

1. MATERIALS:
HOUSING: UNFILLED NYLON 6/6, RATED UL94-V2
FOR COLOUR, SEE CHARTS ON SUBSEQUENT SHEETS
TERMINAL: PHOSPHOR BRONZE, 0.50 THICK REF
PLATING: 2µm MINIMUM SILVER IN CONTACT AREA
0.10µm MINIMUM SILVER FLASH ALLOWER
2. PRODUCT SPECIFICATION: PS-99020-0037
3. APPLICATION SPECIFICATION: AS-99033-0004
4. SEE SUBSEQUENT SHEETS FOR PART NUMBERS SHOWING THE VARIOUS CODING, KEYING AND LATCHING OPTIONS

LAST INSPECTION NUMBER USED: 3

CKT SIZE	DIM A	DIM B
2	5.00	9.80
3	10.00	14.80
4	15.00	19.80

CKT SIZE	NO OF CONNECTORS PER TRAY: 99025-0021	NO OF CONNECTORS PER BOX
2	1200	3600
3	750	2250
4	600	1800

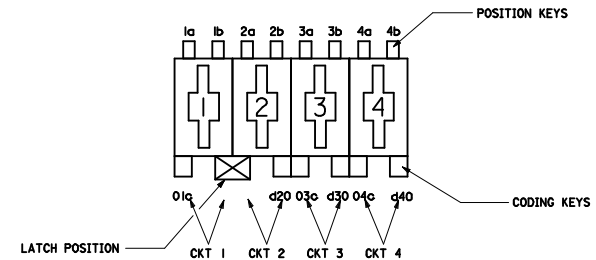


Z-Z
KEYING, CODING & LATCH IDENTIFICATION
(3 CIRCUIT EXAMPLE SHOWN)

ORIGINAL RELEASE EC NO: IFC2016-0564 DRAWN: J MURPHY 2015/10/15 CHKD: CHIKO APPR: S HANHAN 2015/11/02	QUALITY SYMBOLS ▽=0 ▽=0	GENERAL TOLERANCES (UNLESS SPECIFIED) <table border="1"> <thead> <tr> <th></th> <th>mm</th> <th>INCH</th> </tr> </thead> <tbody> <tr> <td>4 PLACES</td> <td>± ---</td> <td>± ---</td> </tr> <tr> <td>3 PLACES</td> <td>± ---</td> <td>± ---</td> </tr> <tr> <td>2 PLACES</td> <td>± 0.10</td> <td>± ---</td> </tr> <tr> <td>1 PLACE</td> <td>± 0.20</td> <td>± ---</td> </tr> <tr> <td>0 PLACE</td> <td>± ---</td> <td>± ---</td> </tr> </tbody> </table>		mm	INCH	4 PLACES	± ---	± ---	3 PLACES	± ---	± ---	2 PLACES	± 0.10	± ---	1 PLACE	± 0.20	± ---	0 PLACE	± ---	± ---	DIMENSION STYLE MM ONLY	SCALE 2:1	DESIGN UNITS METRIC	THIRD ANGLE PROJECTION
		mm	INCH																					
4 PLACES	± ---	± ---																						
3 PLACES	± ---	± ---																						
2 PLACES	± 0.10	± ---																						
1 PLACE	± 0.20	± ---																						
0 PLACE	± ---	± ---																						
DRAWN BY: DSHEA DATE: 2013/02/01 CHECKED BY: SMCREEVY DATE: 2013/03/12 APPROVED BY: STGRIFFIN DATE: 2013/04/08	TITLE RAST 5 INDIRECT FEMALE 16 AMPS		MATERIAL NO. SEE SHEETS 2&3		DOCUMENT NO. SD-90835-001	SHEET NO. 1 OF 3																		

MOLEX PART NO	HOUSING NO.	CIRCUIT SIZE	COLOUR	POSITION KEYS	CODING KEYS	LATCH POSITION	CONFIGURATION	REF
90835-0001 90835-0034	90835-9001 90835-9002	2	NATURAL PURPLE RED	1a 1b 2a 2b	01c d20	1/2		K00
90835-0003	90835-9001	2	NATURAL	1b 2a	01c d20	1/2		K01
90835-0045	90835-9003	2	PINK RED	1a 2b	01c	1/2		K02
90835-0035	90835-9002	2	PURPLE RED	2a	01c d20	1/2		K03
90835-0036 90835-0019	90835-9004 90835-9001	2	VIOLET NATURAL	1a 2b	d20	1/2		K05
90835-0037	90835-9003	2	PINK RED	1b 2b	01c	1/2		K09
90835-0057	90835-9001	2	NATURAL	1a	01c d20	1/2		K12
90835-0038	90835-9002	2	PURPLE RED	2b	01c d20	1/2		K15
90835-0039	90835-9003	2	PINK RED	1a 1b 2a 2b	01c	1/2		K33
90835-0040 90835-0041 90835-0059	90835-9004 90835-9005 90835-9001	2	VIOLET BROWN NATURAL	1a 1b 2a 2b	d20	1/2		K34
90835-0042	90835-9005	2	BROWN	1b 2b	d20	1/2		K35

MOLEX PART NO	HOUSING NO.	CIRCUIT SIZE	COLOUR	POSITION KEYS	CODING KEYS	LATCH POSITION	CONFIGURATION	REF
90835-0043	90835-9006	2	ORANGE	1a 1b	NONE	1/2		K40
90835-0044	90835-9006	2	ORANGE	1a 1b 2a 2b	NONE	1/2		K41
90835-0058	90835-9001	2	NATURAL	1b	d20	1/2		K49



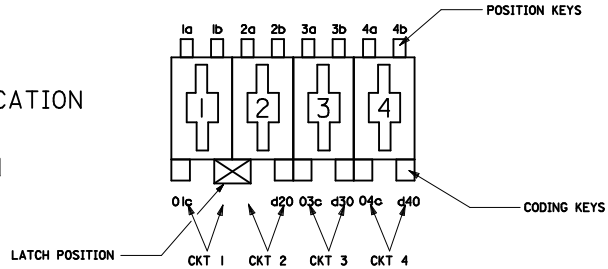
KEYING, CODING & LATCH IDENTIFICATION
(4 CKT EXAMPLE SHOWN)
VIEW IN MATING DIRECTION

SEE SHEET 1 EC NO: IPG2016-0564 DRAWN: J MURPHY 2015/10/15 CHKD: APPR: MSHAMMAN 2015/11/02 DESCRIPTION:	QUALITY SYMBOLS ▽=0 ▽=0	GENERAL TOLERANCES (UNLESS SPECIFIED) <table border="1"> <thead> <tr> <th></th> <th>mm</th> <th>INCH</th> </tr> </thead> <tbody> <tr> <td>4 PLACES</td> <td>± ---</td> <td>± ---</td> </tr> <tr> <td>3 PLACES</td> <td>± ---</td> <td>± ---</td> </tr> <tr> <td>2 PLACES</td> <td>± 0.10</td> <td>± ---</td> </tr> <tr> <td>1 PLACE</td> <td>± 0.20</td> <td>± ---</td> </tr> <tr> <td>0 PLACE</td> <td>± ---</td> <td>± ---</td> </tr> </tbody> </table>		mm	INCH	4 PLACES	± ---	± ---	3 PLACES	± ---	± ---	2 PLACES	± 0.10	± ---	1 PLACE	± 0.20	± ---	0 PLACE	± ---	± ---	DIMENSION STYLE MM ONLY	SCALE 2:1	DESIGN UNITS METRIC	THIRD ANGLE PROJECTION
		mm	INCH																					
	4 PLACES	± ---	± ---																					
	3 PLACES	± ---	± ---																					
2 PLACES	± 0.10	± ---																						
1 PLACE	± 0.20	± ---																						
0 PLACE	± ---	± ---																						
DRAWN BY: DSHEA DATE: 2013/02/01 CHECKED BY: SMCGREEVY DATE: 2013/03/12 APPROVED BY: STGRIFFIN DATE: 2013/04/08	TITLE RAST 5 INDIRECT FEMALE 16 AMPS																							
MATERIAL NO. SEE TABLES	DOCUMENT NO. SD-90835-001		SHEET NO. 2 OF 3																					
DRAFT WHERE APPLICABLE MUST REMAIN WITHIN DIMENSIONS																								

MOLEX PART NO	HOUSING NO.	CIRCUIT SIZE	COLOUR	POSITION CODING	CODING KEYS	LATCH POSITION	CONFIGURATION	REF
90835-0500	90835-9021	3	NATURAL	1a 1b 2a 2b 3a 3b	01c d20 03c d30	1/2		K00
90835-0501	90835-9022	3	NATURAL	1a 1b 2a 2b 3a 3b	01c d10 02c d30	2/3		K90
90835-0502	90835-9021	3	NATURAL	1b	01c d20	1/2		K01
90835-0518	90835-9023	3	PURPLE RED	1a 1b 2a 2b 3a 3b	d10 d30	2/3		K38
90835-0519	90835-9024	3	VIOLET	1a 1b 2a 2b 3a 3b	NONE	2/3		K39
90835-0520	90835-9025	3	BROWN	1a 1b 2a 2b 3a 3b	d20	1/2		K40
90835-0521	90835-9023	3	PURPLE RED	2a	d10 d30	2/3		K44
90835-0522	90835-9025	3	BROWN	1b 2a	d20	1/2		K45
90835-0523	90835-9024	3	VIOLET	1b 3b	NONE	2/3		K46
90835-0534	90835-9026	3	PINK RED	1a 1b 2a 2b 3a 3b	d10	2/3		K41
90835-0536	90835-9022	3	NATURAL	2a	d10 d30	2/3		K44
90835-0537	90835-9022	3	NATURAL	3b	d10 d30	2/3		K101
90835-0538	90835-9024	3	VIOLET	1b 2a 2b 3b	NONE	2/3		K124

MOLEX PART NO	HOUSING NO.	CIRCUIT SIZE	COLOUR	POSITION CODING	CODING KEYS	LATCH POSITION	CONFIGURATION	REF
90835-1251	90835-9101	4	NATURAL	1a 1b 2a 2b 3a 3b 4a 4b	01c d20 03c d40	1/2 3/4		K00
90835-1254	90835-9101	4	NATURAL	1b	03c d40	1/2 3/4		K01
90835-1268	90835-9102	4	VIOLET	1a 1b 2a 2b 3a 3b 4a 4b	01c	1/2 3/4		K34
90835-1269	90835-9102	4	VIOLET	1a 4b	01c	1/2 3/4		K02
90835-1273	90835-9101	4	NATURAL	1a 3a 3b	01c d20 d40	1/2 3/4		K32
90835-1281	90835-9103	4	PINK RED	1a 1b 2a 2b 3a 3b 4a 4b	01c 03c	1/2 3/4		K76
90835-1283	90835-9103	4	PINK RED	1a 2b 3b 4a	01c 03c d40	1/2 3/4		K65
90835-1284	90835-9103	4	PINK RED	1a 1b 2b 3b 4a	d20 03c d40	1/2 3/4		K--
90835-1285	90835-9103	4	PINK RED	1b	01c 03c	1/2 3/4		K114

KEYING, CODING & LATCH IDENTIFICATION
 (4 CKT EXAMPLE SHOWN)
 VIEW IN MATING DIRECTION



SEE SHEET 1 EC NO: IPG2016-0564 DRAWN: MURPHY 2015/10/15 CHKO: APPR: MSHAMMAN 2015/11/02	QUALITY SYMBOLS ▽=0 ▽=0	GENERAL TOLERANCES (UNLESS SPECIFIED) <table border="1"> <thead> <tr> <th></th> <th>mm</th> <th>INCH</th> </tr> </thead> <tbody> <tr> <td>4 PLACES</td> <td>± ---</td> <td>± ---</td> </tr> <tr> <td>3 PLACES</td> <td>± ---</td> <td>± ---</td> </tr> <tr> <td>2 PLACES</td> <td>± 0.10</td> <td>± ---</td> </tr> <tr> <td>1 PLACE</td> <td>± ---</td> <td>± ---</td> </tr> <tr> <td>0 PLACE</td> <td>± ---</td> <td>± ---</td> </tr> </tbody> </table>		mm	INCH	4 PLACES	± ---	± ---	3 PLACES	± ---	± ---	2 PLACES	± 0.10	± ---	1 PLACE	± ---	± ---	0 PLACE	± ---	± ---	DIMENSION STYLE MM ONLY	SCALE 2:1	DESIGN UNITS METRIC	THIRD ANGLE PROJECTION
		mm	INCH																					
	4 PLACES	± ---	± ---																					
	3 PLACES	± ---	± ---																					
	2 PLACES	± 0.10	± ---																					
1 PLACE	± ---	± ---																						
0 PLACE	± ---	± ---																						
	ANGULAR ± 2 ° DRAFT WHERE APPLICABLE MUST REMAIN WITHIN DIMENSIONS	DRAWN BY: DSHEA DATE: 2013/02/01 CHECKED BY: SMCGREEVY DATE: 2013/03/12 APPROVED BY: STGRIFFIN DATE: 2013/04/08	TITLE RAST 5 INDIRECT FEMALE 16 AMPS																					
		MATERIAL NO. SEE TABLES	DOCUMENT NO. SD-90835-001	SHEET NO. 3 OF 3																				
THIS DRAWING CONTAINS INFORMATION THAT IS PROPRIETARY TO MOLEX INCORPORATED AND SHOULD NOT BE USED WITHOUT WRITTEN PERMISSION																								