

ATLANTIC VERSION TERMINATOR INTERFACE ADAPTER	PART NUMBER	REVISION	DESCRIPTION	FEED TYPE	CONVERT TO	PART NUMBERS REQUIRED					
	2150316-1	A	FINE CRIMP HEIGHT ADJUST	MECHANICAL	PNEUMATIC FEED	2119950-1	2119792-2	-	2119641-1	-	2063440-1
	2150316-2	A	FINE CRIMP HEIGHT ADJUST	PNEUMATIC	SERVO LATCH PLATE	2119951-1	1901697-1	8-2150316-5	-	-	2168400-7 (QUANTITY 2)
					SMART APPLICATOR	2161326-1	-	8-2150316-4	-	-	-
					MECHANICAL FEED	2119949-1	2063961-1	5-18022-5	2119653-1	-	-
	2150316-5	A	FINE CRIMP HEIGHT ADJUST	SERVO LATCH PLATE ⁴	SERVO LATCH PLATE	2119951-1	1901697-1	8-2150316-5	-	-	2168400-7 (QUANTITY 2)
					SMART APPLICATOR	2161326-1	-	8-2150316-4	-	-	-
	2150316-6	A	NON-CRIMP HEIGHT ADJUST	SERVO LATCH PLATE ⁴	-	-	-	-	-	-	-
2150316-7	A	FINE CRIMP HEIGHT ADJUST	NONE	-	-	-	-	-	-	-	-
7-2150316-7	A	CRIMP TOOLING KIT	-	-	-	-	-	-	-	-	-

APPLICATOR DATA		
CRIMP	SIZE	TYPE
WIRE	2.29 mm [.090]	F
INSUL	3.05 mm [.120]	F
APPL INSTRUCTIONS 408-10390		

TERMINAL DATA: G & H TERMINAL		LEAR CRIMP SPECIFICATION	
TERMINAL NAME: RECEPTACLE 6, 3x0,8-1			
WIRE STRIP LENGTH		INSULATION DIAMETER RANGE	
5.50-6.00 mm [.217-.236 IN]		Ø1.40-2.10 mm [.055-.083 IN]	
TERMINAL APPLICATION SPECIFICATION	25969 Rev 6	-	-
TERMINALS APPLIED ³			
TE TERMINAL	G & H TERMINAL	TE TERMINAL	G & H TERMINAL
1949271-1	25906.201.011	1949271-9	25969.201.004
1949271-2	25906.201.142	1-1949271-0	25969.201.011
1949271-3	25906.201.004	1-1949271-1	25969.201.042
1949271-4	25906.123.211	1-1949271-2	25969.123.204
1949271-5	25906.123.204	1-1949271-3	25969.123.211
1949271-6	25906.417.031	1-1949271-4	25969.123.242
1949271-7	25906.123.242		
1949271-8	25906.201.042		

WIRE SIZE	CRIMP HEIGHT mm [INCH]	CRIMP HEIGHT REFERENCE SETTING
1.00mm2	1.45 +/- 0.05 [.057 +/- .002]	3.7
0.75mm2	1.40 +/- 0.05 [.055 +/- .002]	4.4
0.50mm2	1.30 +/- 0.05 [.051 +/- .002]	5.4

- ¹ RECOMMENDED SPARE PARTS
- ² GREASE BEARING SURFACES LIGHTLY
- 3. LUBRICATE DAILY PER THE APPLICATOR INSTRUCTION SHEET SUPPLIED WITH THE APPLICATOR.
- ⁴ APPLICATOR SPECIFIC DATA TO BE ENTERED INTO BLANK MEMORY CHIP AT ASSEMBLY. SEE BELOW FOR PART NUMBER:
 MECHANICAL FEED WITH "SMART APPLICATOR" CONVERSION: 8-2150316-4
 PNEUMATIC FEED WITH "SMART APPLICATOR" CONVERSION: 8-2150316-4
 SERVO FEED WITH "FINE CRIMP HEIGHT ADJUST": 8-2150316-5
 SERVO FEED WITH "NON-CRIMP HEIGHT ADJUST": 8-2150316-6
- 5. ADJUSTMENT OF THE STRIPPER MAY BE REQUIRED WHEN MOVING THE APPLICATOR BETWEEN BENCH AND LEADMAKER APPLICATIONS.
- ⁶ APPLY PART NUMBER 1-23419-5 LOCTITE TO THREADS OF ITEMS 50, 62 & 242. FOR -6 ONLY APPLY PART NUMBER 1-23419-5 LOCTITE TO THREADS OF ITEMS 37, 50 & 242.
- ⁷ GREASE THREADS, GROOVE AND O-RING ON ITEMS 35 & 252.
- ⁸ MAGNET, ITEM 166 MUST BE ORIENTED CORRECTLY IN ORDER TO PROPERLY ACTUATE THE COUNTER.
- ⁹ CRIMP HEIGHT REFERENCE SETTING WAS THE SETTING USED WHEN THE APPLICATOR WAS QUALIFIED AT THE FACTORY. ADJUSTMENT MAY BE NECESSARY WHEN RUNNING APPLICATOR IN THE FIELD.
- ¹⁰ SPARE FEED CAM STORAGE LOCATION REFER TO INSTRUCTION SHEET FOR ADDITIONAL INFORMATION.
- ¹¹ THE RECOMMENDED SET-UP FOR END FEED APPLICATORS IS POST-FEED WITH ITEM 2119653-1. THE APPLICATOR CAN BE CONFIGURED FOR PRE-FEED WITH ITEM 2119652-1 BUT MAY ENCOUNTER PROBLEMS WITH SOME APPLICATIONS. FEED ISSUES OR TERMINAL JAMMING MAY OCCUR IN THE PRE-FEED CONFIGURATION.
- ¹² WHEN ASSEMBLING -6 NON-CRIMP HEIGHT ADJUST APPLICATOR USE SHIM PACK 2119957-2 TO ALIGN APPLICATOR'S MAXIMUM WIRE CRIMP HEIGHT AT NORMAL TERMINATOR SHUT HEIGHT
- ¹³ APPLICATION IS FOR FLRY WIRE TYPE.

***WARNING**
 ON INSTALLATION, SET WIRE DISC, ITEM 40 TO LARGEST WIRE SIZE SETTING. USE OF SETTINGS BELOW MINIMUM REQUIRED CRIMP HEIGHT SETTING WILL CAUSE DAMAGE TO CRIMP TOOLING.

-77	-7	-6	-5	-2	-1	PART NO	DESCRIPTION	ITEM NO
-	-	1	-	-	-	2119957-2	APPLICATOR SHIM PACK	260
-	1	-	1	1	1	8-21084-0	O-RING, .676 ID, .070 DIA. MAT.	252
-	-	-	-	1	-	2119640-1	PUSH ROD, AIR FEED	250
-	-	-	-	1	-	2079988-1	BUSHING, LCH5-12, MISUMI	249
-	-	-	-	1	-	2119641-1	FEED CAM, AIR FEED	248
-	1	-	1	1	1	2119798-1	DETENT PIN	247
-	1	-	1	1	1	1-22279-3	SPRING, COMPRESSION	246
-	-	1	-	-	-	2119759-1	RAM, AMP STYLE, END FEED, NON-ADJUST	245

ATLANTIC VERSION
 Shown on sheets 1 of 4 & 2 of 4
 (Pacific version shown on sheets 3 of 4 & 4 of 4)

SET UP GAUGE	LOC	DIST	REVISIONS					
2119599-2	A	66	P	LYH	DESCRIPTION	DATE	OWN	APVD
			A		RELEASED	15MAR2013	RW	TE

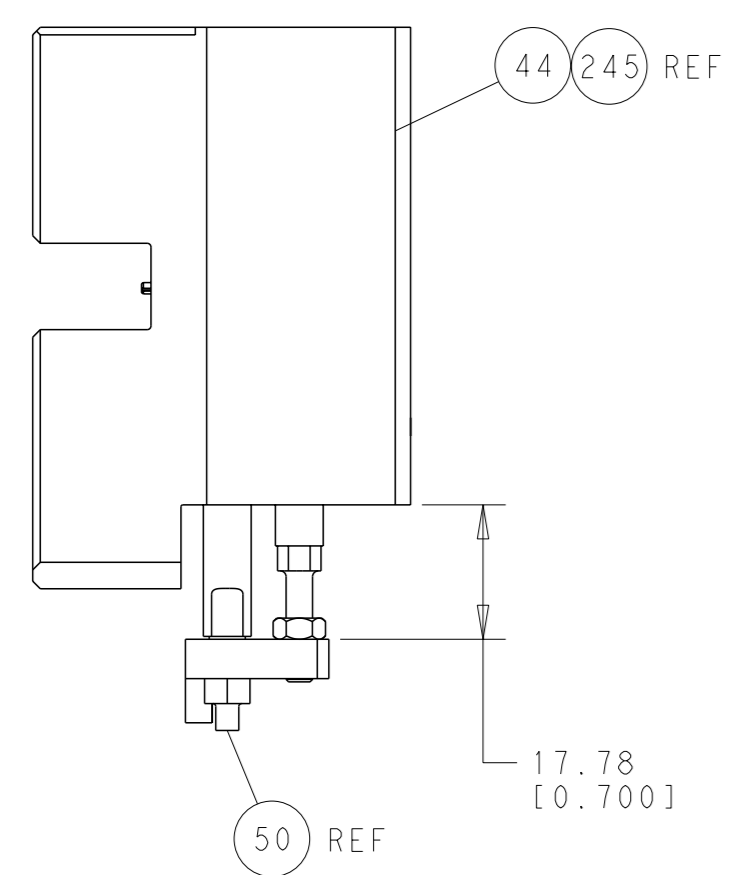
-	1	1	1	1	1	2119082-9	CAM, SNAIL, INSULATION ADJUSTMENT	244	
-	1	1	1	1	1	2079764-1	WASHER, WAVE SPRING, CREST-TO-CREST	243	
-	1	1	1	1	1	2119083-1	RETAINER, INSULATION DIAL	242	
-	-	2	2	-	-	2168400-7	SHCS, LOW HEAD, RoHS, M5 X 10	240	
-	-	-	-	-	1	2119580-1	MECHANICAL FEED ASSEMBLY	239	
-	-	-	-	-	1	2063440-1	AIR FEED MODULE	238	
-	-	1	1	-	-	2119740-2	TAG, IDENTIFICATION	213	
-	-	REFREF	-	-	-	1901697-1	FEED FINGER ASSEMBLY, EF	183	
-	1	1	1	1	1	1-1976055-2	STANDOFF, HOLD-DOWN	180	
-	1	1	1	1	1	6-993111-6	PIN, SLOTTED SPRING 3.0 X 14.0	177	
-	1	1	1	1	1	8-22280-7	SPRING, COMPRESSION	176	
-	1	1	1	1	1	1752353-2	GUIDE PIN, HOLDDOWN	175	
-	1	1	1	1	1	1901680-2	GUIDE PIN, HOLDDOWN	174	
-	-	-	-	2	-	21045-3	RING, RETAIN, EXTERN, 3/16 CRESCENT	172	
-	1	1	1	1	1	994969-1	MAGNET, RARE EARTH HIGH ENERGY	166	
-	REFREF	REFREF	REFREF	REFREF	REFREF	994970-2	COUNTER, MAGNETIC	164	
-	-	-	-	1	-	240638-1	SPRING, FEED FINGER	163	
-	-	-	-	1	-	3-23627-7	PIN, RETAIN, GRVD, 3/16 X .854	137	
-	-	REFREF	-	-	-	SEE NOTE 4	MEMORY CHIP, PROGRAMMED	135	
-	-	1	1	-	-	1633743-1	SERVO FEED LATCH ASM	133	
-	1	1	1	1	1	455888-4	SPACER, CRIMPER	82	
-	1	1	1	1	1	2119956-2	DOCUMENTATION PACKAGE	71	
-	2	2	2	2	2	2-18032-2	SCR, SET, FLT POINT M3 X 10.0	70	
-	1	-	-	1	1	2119740-1	TAG, IDENTIFICATION	67	
-	2	2	2	2	2	2168078-1	SCREW, DRIVE, RH, RoHS	66	
-	1	1	1	1	1	1901681-1	HOLDDOWN, TERMINAL	65	
-	2	2	2	2	2	2168400-5	SHCS, LOW HEAD, RoHS, M4 X 20	64	
-	1	-	1	1	1	2119793-1	LIMITER, ADJUSTMENT BOLT	63	
-	3	-	3	3	3	992763-5	SCR, SET, SOC, CONE POINT, M3 x 4.0	62	
-	1	1	1	1	1	2079383-4	SCR, BHSC, RoHS (M4 X 8)	60	
-	-	-	-	-	1	5-18022-5	SCR, HEX HD CAP, M4 X 6.0	59	
-	-	-	-	-	1	2063961-1	FEED FINGER	58	
-	3	3	3	3	3	2168400-4	SHCS, LOW HEAD, RoHS, M4 X 8	57	
-	2	2	2	2	2	1-2168083-0	SCR, SKT HD CAP, RoHS, M4 X 10	56	
-	2	2	2	2	2	5018030-2	NUT, HEX, REG, RoHS, M4	55	
-	2	2	2	2	2	5018030-1	NUT, HEX, REG, RoHS, M3	54	
-	2	2	2	2	2	986965-8	NUT, LOCK, HEX, TORQUE (M4)	53	
-	1	1	1	1	1	1-5018030-0	NUT, HEX, REG, RoHS, M3.5	52	
-	-	-	-	-	1	2119792-2	PAWL, EF, AIR	51	
-	-	-	-	-	1	2	18023-9	SCR, SKT HD CAP M4 X 6.0	49
-	-	-	-	-	1	2119652-1	FEED CAM, PRE FEED	48	
-	-	-	-	-	1	2119653-1	FEED CAM, POST FEED	47	
-	1	1	1	1	1	2119655-5	APPLICATOR BASIC ASSEMBLY, EF	46	
-	1	-	1	1	1	2119369-1	RAM, AMP STYLE, END FEED	44	
-	1	1	1	1	1	2079383-7	SCR, BHSC, RoHS (M8 X 25)	41	
-	1	-	1	1	1	2119645-1	DISC, NUMBERED FA WIRE ADJUSTMENT	40	
-	1	-	1	1	1	2119957-1	APPLICATOR SHIM PACK	39	
-	1	1	1	1	1	2119644-1	RAM WASHER, PRECISION	38	
-	1	1	1	1	1	2119085-1	FA HEAD, ATLANTIC STYLE	37	
-	1	-	1	1	1	2119092-1	BOLT, ADJUSTMENT	35	
-	7	7	7	7	7	1-18028-2	WASHER, FLAT, REG M4	33	
-	2	2	2	2	2	2168083-9	SCR, SKT HD CAP, RoHS, M4 X 20	31	
-	2	2	2	2	2	1-2168083-0	SCR, SKT HD CAP, RoHS, M4 X 10	29	
-	1	1	1	1	1	240639-1	STRIPPER (MACHINING)	27	
-	2	2	2	2	2	1320906-1	STUD, THREADED	25	
-	1	1	1	1	1	1752371-3	PLATE, STRIP GUIDE	24	
-	1	1	1	1	1	240825-1	PLATE, STRIP HOLD DOWN	23	
-	2	2	2	2	2	2-22281-3	SPRING, COMPRESSION	22	
-	1	1	1	1	1	1752373-4	DRAG	20	
-	2	2	2	2	2	1901259-4	GUIDE, LOWER STRIP	18	
-	4	4	4	4	4	1-2079383-1	SCR, BHSC, RoHS (M6 X 12)	17	
-	1	1	1	1	1	1752360-1	SPACER, HOLD-DOWN	13	
-	1	1	1	1	1	240833-2	PLATE, REAR SHEAR	11	
-	-	-	-	-	-	-	-	10	
-	1	1	1	1	1	690482-4	PLATE, FRONT SHEAR	9	
-	1	1	1	1	1	1-1633384-1	ANVIL, COMBINATION	8	
-	1	1	1	1	1	1-2217206-0	BLADE, SLUG	7	
-	-	-	-	-	-	-	-	6	
-	1	1	1	1	1	3-240641-5	SPACER	5	
-	1	1	1	1	1	238009-1	BLOCK, FL CRIMPER SPACER	4	
-	1	1	1	1	1	1-1633961-9	CRIMPER, INSULATION F PREMIUM	3	
-	1	1	1	1	1	455888-7	SPACER, CRIMPER	2	
-	1	1	1	1	1	1-456406-1	CRIMPER, WIRE PREMIUM	1	

DIMENSIONS:		TOLERANCES UNLESS OTHERWISE SPECIFIED:		APPROVED:		NAME:	
mm	0 PLC ±0.5	1 PLC ±0.5	2 PLC ±0.13	3 PLC ±0.013	4 PLC ±0.0001	ANGLES ±0.0001	FINISH
MATERIAL:		WEIGHT:		SCALE:	1:1	SHEET:	1 OF 4
Customer Accessible Production Drawing				REV A			

SHEETS 3 & 4 ARE NOT REQUIRED FOR ATLANTIC VERSION

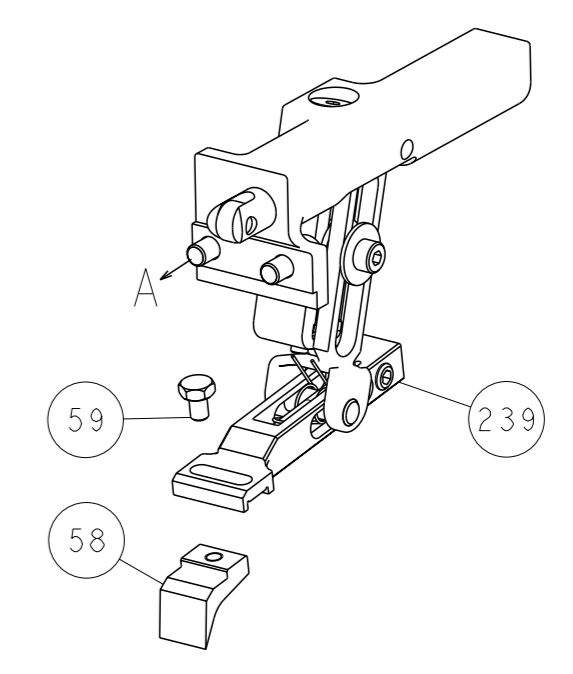
LOC	DIST	REV	DESCRIPTION	DATE	OWN	APVD
A	66		SEE SHEET 1			

DIMENSIONING AND TOLERANCING PER ASME Y14.5M-2003

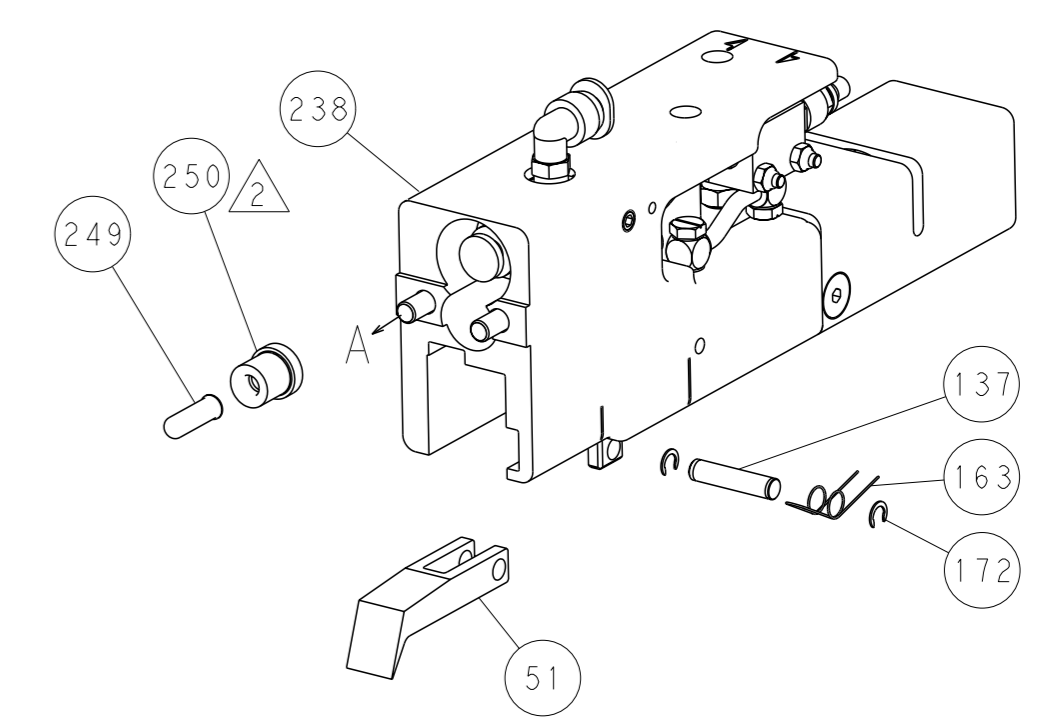


HOLDDOWN SET-UP

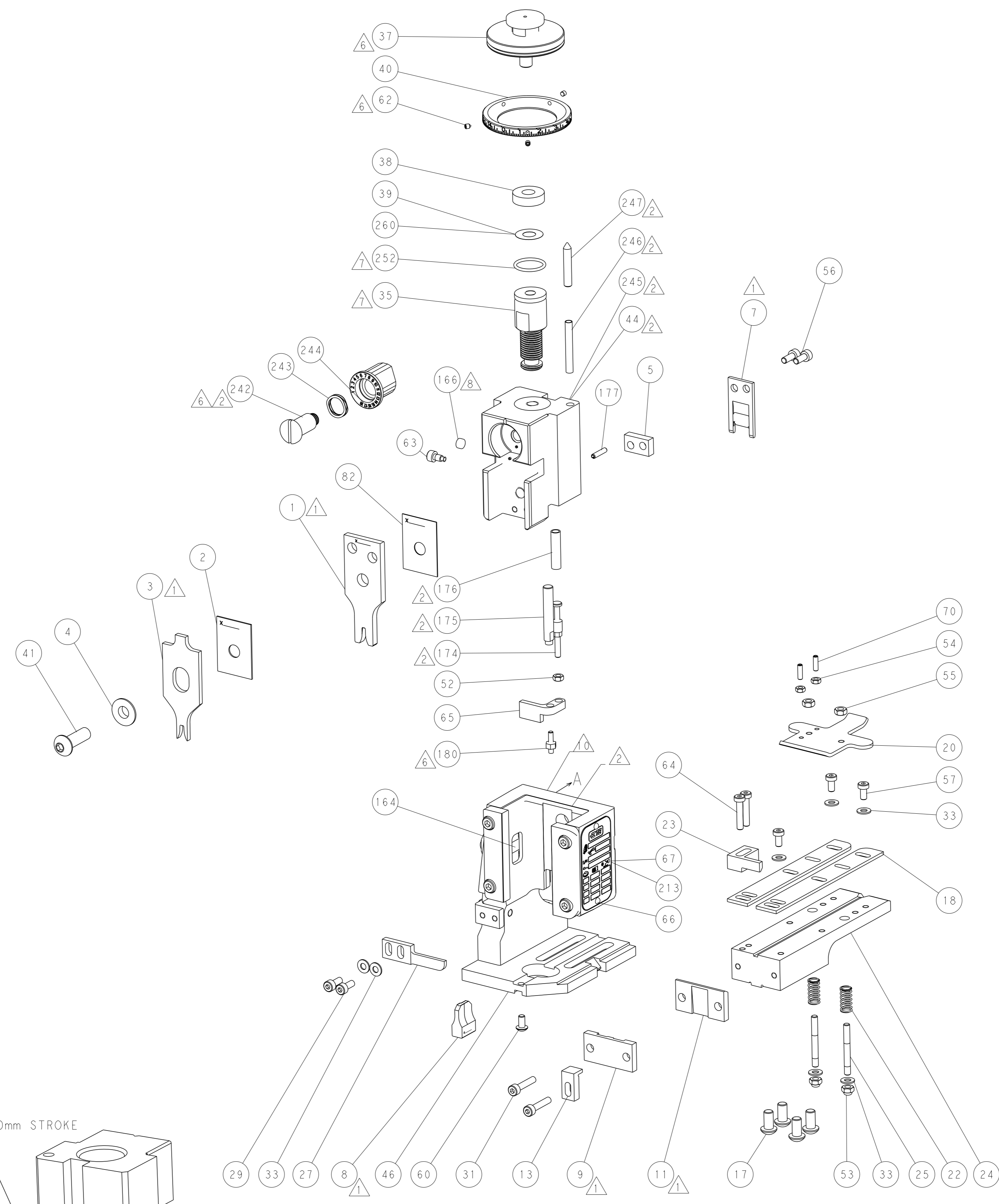
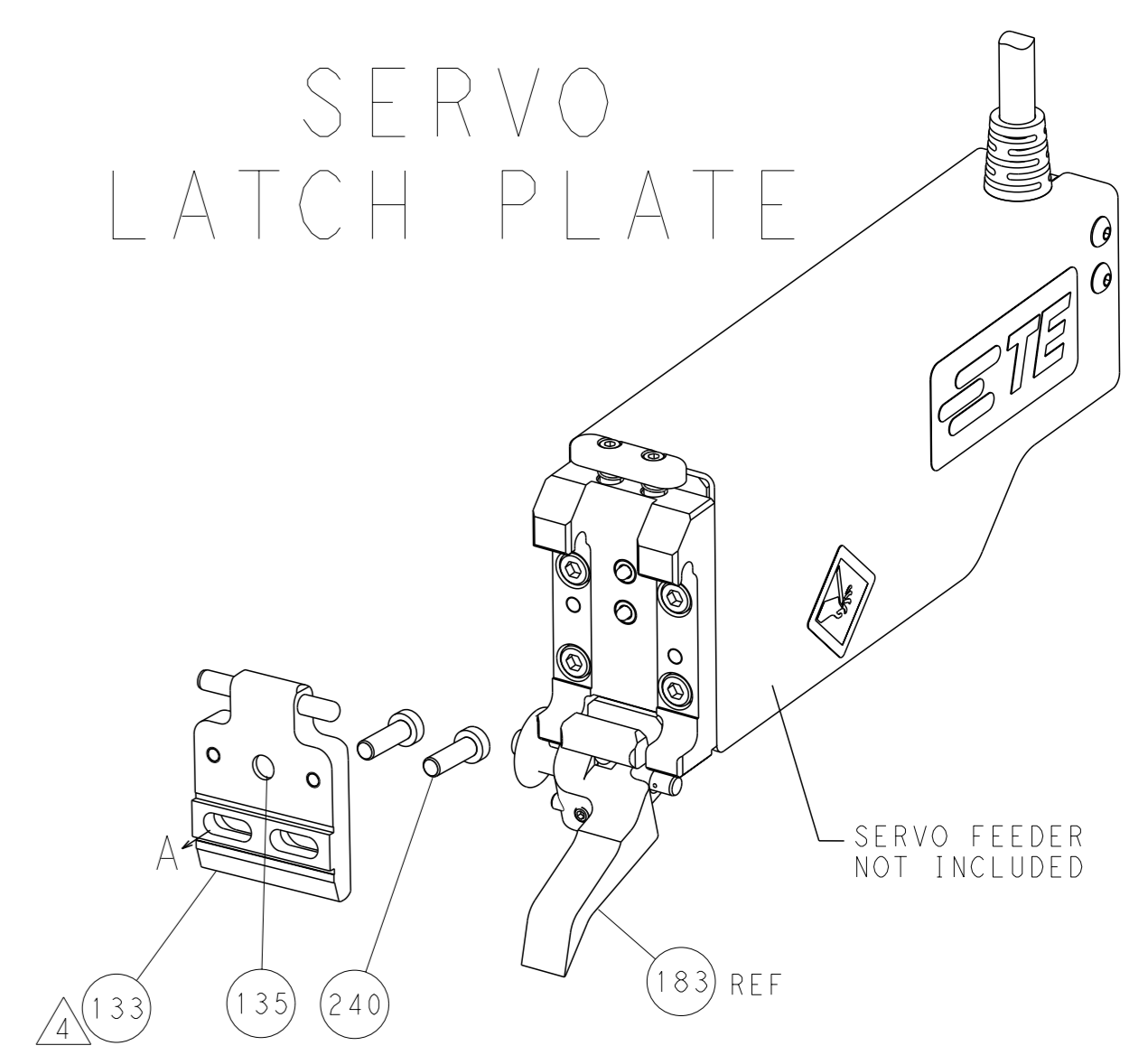
FEED TYPE
MECHANICAL



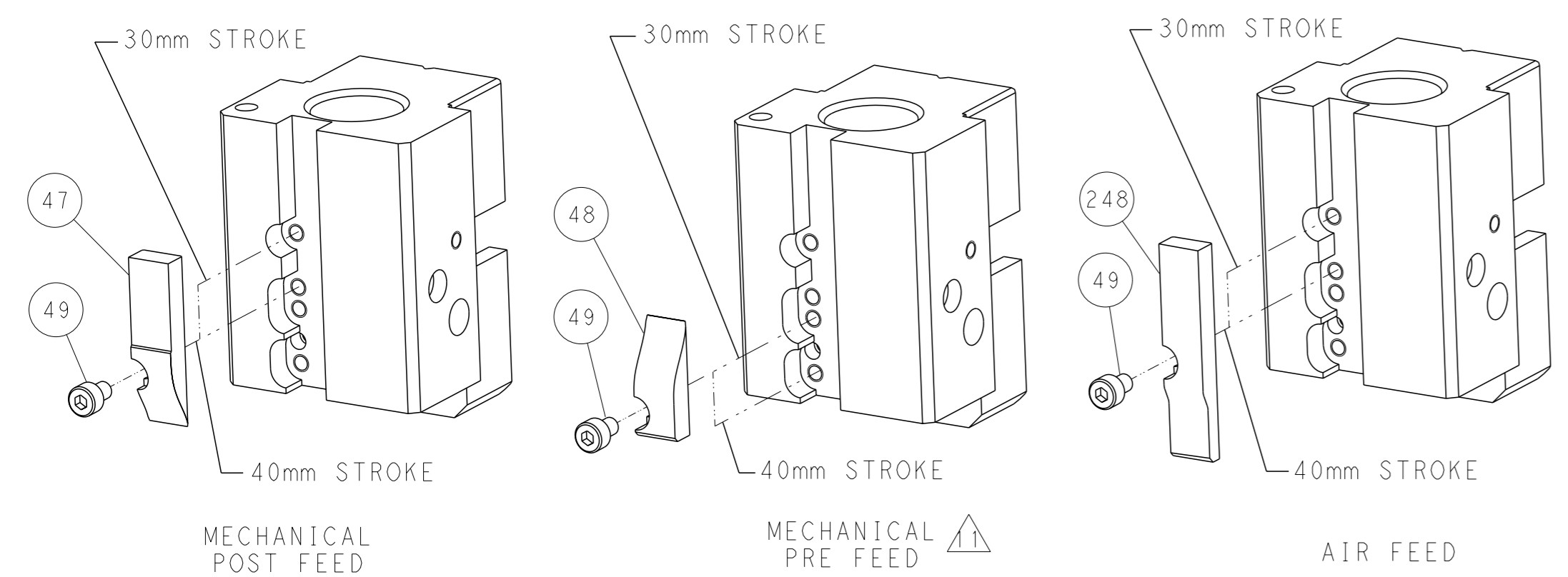
PNEUMATIC



SERVO
LATCH PLATE



CAM POSITIONS



ATLANTIC VERSION
 Shown on sheets 1 of 4 & 2 of 4
 (Pacific version shown on sheets 3 of 4 & 4 of 4)

DIMENSIONS: mm 		TOLERANCES UNLESS OTHERWISE SPECIFIED: 0 PLC ±.5 1 PLC ±0.5 2 PLC ±0.13 3 PLC ±0.013 4 PLC ±0.001 ANGLES ° ±.1		OWN: R. O. WILSON 06FEB2013 CHK: K. J. STAKEM 07FEB2013 APVD: J. L. ELBIN 07FEB2013 PRODUCT SPEC APPLICATION SPEC WEIGHT Customer Accessible Production Drawing		NAME: Ocean End Feed Applicator SIZE: A1 CAGE CODE: 00779 DRAWING NO: C-2150316 SCALE: 1:1 SHEET: 2 of 4 REV: A		RESTRICTED TO:	
-----------------------	--	--	--	---	--	---	--	----------------	--

PACIFIC VERSION TERMINATOR INTERFACE ADAPTER	PART NUMBER	REVISION	DESCRIPTION	FEED TYPE	APPLICATOR STYLE CONVERSION CHART						
					CONVERT TO	PART NUMBERS REQUIRED					
	2-2150316-1	A	FINE CRIMP HEIGHT ADJUST	MECHANICAL	PNEUMATIC FEED	2119950-1	2119792-2	-	2119641-2	-	2063440-1
					SERVO LATCH PLATE	2119951-1	1901697-1	8-2150316-5	-	2168400-7 (QUANTITY 2)	
					SMART APPLICATOR	2161326-1	-	8-2150316-4	-	-	
	2-2150316-2	A	FINE CRIMP HEIGHT ADJUST	PNEUMATIC	MECHANICAL FEED	2119949-1	2063961-1	5-18022-5	2119653-2	-	-
					SERVO LATCH PLATE	2119951-1	1901697-1	8-2150316-5	-	2168400-7 (QUANTITY 2)	
					SMART APPLICATOR	2161326-1	-	8-2150316-4	-	-	
	2-2150316-5	A	FINE CRIMP HEIGHT ADJUST	SERVO LATCH PLATE Δ	MECHANICAL FEED	2119949-1	2063961-1	5-18022-5	2119653-2	-	-
PNEUMATIC FEED					2119950-1	2119792-2	-	2119641-2	-	2063440-1	
2-2150316-7	A	FINE CRIMP HEIGHT ADJUST	NONE	-	-	-	-	-	-	-	
7-2150316-7	A	CRIMP TOOLING KIT	-	-	-	-	-	-	-	-	

APPLICATOR DATA		
CRIMP	SIZE	TYPE
WIRE	2.29 mm [.090]	F
INSUL	3.05 mm [1.20]	F
APPL INSTRUCTIONS 408-10390		

TERMINAL DATA: G & H TERMINAL LEAR CRIMP SPECIFICATION			
TERMINAL NAME: RECEPTACLE 6, 3x0, 8-1			
WIRE STRIP LENGTH		INSULATION DIAMETER RANGE	
5.50-6.00 mm [2.17-.236 IN]		\varnothing 1.40-2.10 mm [0.055-.083 IN]	
TERMINAL APPLICATION SPECIFICATION		25969 Rev 6	-
TERMINALS APPLIED Δ			
TE TERMINAL	G & H TERMINAL	TE TERMINAL	G & H TERMINAL
1949271-1	25906.201.011	1949271-9	25969.201.004
1949271-2	25906.201.142	1-1949271-0	25969.201.011
1949271-3	25906.201.004	1-1949271-1	25969.201.042
1949271-4	25906.123.211	1-1949271-2	25969.123.204
1949271-5	25906.123.204	1-1949271-3	25969.123.211
1949271-6	25906.417.031	1-1949271-4	25969.123.242
1949271-7	25906.123.242		
1949271-8	25906.201.042		

WIRE SIZE	CRIMP HEIGHT mm [INCH]	CRIMP HEIGHT REFERENCE SETTING Δ
1.00mm2	1.45+/-0.05 [.057+/-0.002]	3.7
0.75mm2	1.40+/-0.05 [.055+/-0.002]	4.4
0.50mm2	1.30+/-0.05 [.051+/-0.002]	5.4

- RECOMMENDED SPARE PARTS
- GREASE BEARING SURFACES LIGHTLY
- 3. LUBRICATE DAILY PER THE APPLICATOR INSTRUCTION SHEET SUPPLIED WITH THE APPLICATOR.
- Δ APPLICATOR SPECIFIC DATA TO BE ENTERED INTO BLANK MEMORY CHIP AT ASSEMBLY. SEE BELOW FOR PART NUMBER:
MECHANICAL FEED WITH "SMART APPLICATOR" CONVERSION: 8-2150316-4
PNEUMATIC FEED WITH "SMART APPLICATOR" CONVERSION: 8-2150316-4
SERVO FEED WITH "FINE CRIMP HEIGHT ADJUST": 8-2150316-5
- 5. ADJUSTMENT OF THE STRIPPER MAY BE REQUIRED WHEN MOVING THE APPLICATOR BETWEEN BENCH AND LEADMAKER APPLICATIONS.
- Δ APPLY PART NUMBER 1-23419-5 LOCTITE TO THREADS OF ITEMS 50, 62 & 242.
- Δ GREASE THREADS, GROOVE AND O-RING ON ITEMS 139 & 153.
- Δ MAGNET, ITEM 166 MUST BE ORIENTED CORRECTLY IN ORDER TO PROPERLY ACTUATE THE COUNTER.
- Δ CRIMP HEIGHT REFERENCE SETTING WAS THE SETTING USED WHEN THE APPLICATOR WAS QUALIFIED AT THE FACTORY. ADJUSTMENT MAY BE NECESSARY WHEN RUNNING APPLICATOR IN THE FIELD.
- Δ SPARE FEED CAM STORAGE LOCATION REFER TO INSTRUCTION SHEET FOR ADDITIONAL INFORMATION.
- Δ THE RECOMMENDED SET-UP FOR END FEED APPLICATORS IS POST-FEED WITH ITEM 2119653-1. THE APPLICATOR CAN BE CONFIGURED FOR PRE-FEED WITH ITEM 2119652-1 BUT MAY ENCOUNTER PROBLEMS WITH SOME APPLICATIONS. FEED ISSUES OR TERMINAL JAMMING MAY OCCUR IN THE PRE-FEED CONFIGURATION.
- Δ APPLICATION IS FOR FLY WIRE TYPE.

***WARNING**
ON INSTALLATION, SET WIRE DISC, ITEM 40 TO LARGEST WIRE SIZE SETTING. USE OF SETTINGS BELOW MINIMUM REQUIRED CRIMP HEIGHT SETTING WILL CAUSE DAMAGE TO CRIMP TOOLING.

	ITEM NO	DESCRIPTION	ITEM NO
- 1 1 1 1	2119782-1	FINE ADJUST HEAD ASM, PACIFIC STYLE	251
- - - 1 -	2119640-1	PUSH ROD, AIR FEED	250
- - - 1 -	2079988-1	BUSHING, LCH5-12, MISUMI	249
- 1 1 1 1	1-22279-3	SPRING, COMPRESSION	246
- 1 1 1 1	2119082-9	CAM, SNAIL, INSULATION ADJUSTMENT	244
- 1 1 1 1	2079764-1	WASHER, WAVE SPRING, CREST-TO-CREST	243
-77-27-25-22-21	PART NO	DESCRIPTION	ITEM NO

PACIFIC VERSION
Shown on sheets 3 of 4 & 4 of 4
(Atlantic version shown on sheets 1 of 4 & 2 of 4)

SET UP GAUGE	LOC	DIST	REVISIONS			
2119599-2	A	66	REV	DATE	BY	APPV
			-	SEE SHEET 1	-	-

REV	DATE	BY	APPV	DESCRIPTION	DATE	OWN	APPV
- 1	1	1	1	2119083-1	RETAINER, INSULATION DIAL		242
- -	2	-	-	2168400-7	SHCS, LOW HEAD, RoHS, M5 X 10		240
- -	-	-	1	2119580-1	MECHANICAL FEED ASSEMBLY		239
- -	-	1	-	2063440-1	AIR FEED MODULE		238
- -	1	-	-	2119740-2	TAG, IDENTIFICATION		213
- 4	4	4	4	2079383-9	SCR, BHSC, RoHS (M6 X 20)		186
- -	REF	-	-	1901697-1	FEED FINGER ASSEMBLY, EF		183
- 1	1	1	1	1-1976055-2	STANDOFF, HOLD-DOWN		180
- 1	1	1	1	6-993111-6	PIN, SLOTTED SPRING 3.0 X 14.0		177
- 1	1	1	1	8-22280-7	SPRING, COMPRESSION		176
- 1	1	1	1	1752353-2	GUIDE PIN, HOLDDOWN		175
- 1	1	1	1	1901680-2	GUIDE PIN, HOLDDOWN		174
- -	-	2	-	21045-3	RING, RETAIN, EXTERN, 3/16 CRESCENT		172
- 1	1	1	1	994969-1	MAGNET, RARE EARTH HIGH ENERGY		166
- REF	REF	REF	REF	994970-2	COUNTER, MAGNETIC		164
- -	-	1	-	240638-1	SPRING, FEED FINGER		163
- 1	1	1	1	8-21084-1	O-RING, .801 ID, .070 DIA. MAT.		153
- -	-	1	-	2119641-2	FEED CAM, AIR FEED		152
- 1	1	1	1	2119798-2	DETENT PIN		145
- 1	1	1	1	2079383-8	SCR, BHSC, RoHS (M4 X 16)		144
- -	-	-	1	2119653-2	FEED CAM, POST FEED		142
- 1	1	1	1	2119655-6	APPLICATOR BASIC ASSEMBLY, EF		141
- 1	1	1	1	2119651-1	RAM, ASIAN STYLE, END FEED		140
- 1	1	1	1	2119092-2	BOLT, ADJUSTMENT		139
- -	-	1	-	3-23627-7	PIN, RETAIN, GRVD, 3/16 X .854		137
- -	REF	-	-	SEE NOTE 4	MEMORY CHIP, PROGRAMMED		135
- -	1	-	-	1633743-1	SERVO FEED LATCH ASM		133
- 1	1	1	1	455888-4	SPACER, CRIMPER		82
- 1	1	1	1	2119956-2	DOCUMENTATION PACKAGE		71
- 2	2	2	2	2-18032-2	SCR, SET, FLT POINT M3 X 10.0		70
- 1	-	1	1	2119740-1	TAG, IDENTIFICATION		67
- 2	2	2	2	2168078-1	SCREW, DRIVE, RH, RoHS		66
- 1	1	1	1	1901681-1	HOLDDOWN, TERMINAL		65
- 2	2	2	2	2168400-5	SHCS, LOW HEAD, RoHS, M4 X 20		64
- 1	1	1	1	2119793-1	LIMITER, ADJUSTMENT BOLT		63
- 3	3	3	3	992763-5	SCR, SET, SOC, CONE POINT, M3 X 4.0		62
- -	-	-	1	5-18022-5	SCR, HEX HD CAP, M4 X 6.0		59
- -	-	-	1	2063961-1	FEED FINGER		58
- 3	3	3	3	2168400-4	SHCS, LOW HEAD, RoHS, M4 X 8		57
- 2	2	2	2	1-2168083-0	SCR, SKT HD CAP, RoHS, M4 X 10		56
- 2	2	2	2	5018030-2	NUT, HEX, REG, RoHS, M4		55
- 2	2	2	2	5018030-1	NUT, HEX, REG, RoHS, M3		54
- 2	2	2	2	986965-8	NUT, LOCK, HEX, TORQUE (M4)		53
- 1	1	1	1	1-5018030-0	NUT, HEX, REG, RoHS, M3.5		52
- -	-	-	1	2119792-2	PAWL, EF, AIR		51
- -	-	-	1	18023-9	SCR, SKT HD CAP M4 X 6.0		49
- -	-	-	1	2119652-1	FEED CAM, PRE FEED		48
- 1	1	1	1	2079383-7	SCR, BHSC, RoHS (M8 X 25)		41
- 1	1	1	1	2119645-1	DISC, NUMBERED FA WIRE ADJUSTMENT		40
- 1	1	1	1	2119957-1	APPLICATOR SHIM PACK		39
- 1	1	1	1	2119644-1	RAM WASHER, PRECISION		38
- 7	7	7	7	1-18028-2	WASHER, FLAT, REG M4		33
- 2	2	2	2	2168083-9	SCR, SKT HD CAP, RoHS, M4 X 20		31
- 2	2	2	2	1-2168083-0	SCR, SKT HD CAP, RoHS, M4 X 10		29
- 1	1	1	1	240639-1	STRIPPER (MACHINING)		27
- 2	2	2	2	1320906-1	STUD, THREADED		25
- 1	1	1	1	1752371-3	PLATE, STRIP GUIDE		24
- 1	1	1	1	240825-1	PLATE, STRIP HOLD DOWN		23
- 2	2	2	2	2-22281-3	SPRING, COMPRESSION		22
- 1	1	1	1	1752373-4	DRAG		20
- 2	2	2	2	1901259-4	GUIDE, LOWER STRIP		18
- 1	1	1	1	1752360-1	SPACER, HOLD-DOWN		13
- 1	1	1	1	240833-2	PLATE, REAR SHEAR		11
- -	-	-	-	-	-		10
- 1	1	1	1	690482-4	PLATE, FRONT SHEAR		9
- 1	1	1	1	1-1633384-1	ANVIL, COMBINATION		8
- 1	1	1	1	1-2217206-0	BLADE, SLUG		7
- -	-	-	-	-	-		6
- 1	1	1	1	3-240641-5	SPACER		5
- 1	1	1	1	238009-1	BLOCK, FL CRIMPER SPACER		4
- 1	1	1	1	1-1633961-9	CRIMPER, INSULATION F PREMIUM		3
- 1	1	1	1	455888-7	SPACER, CRIMPER		2
- 1	1	1	1	1-456406-1	CRIMPER, WIRE PREMIUM		1
-77-27-25-22-21	PART NO	DESCRIPTION	ITEM NO				

DIMENSIONS:		TOLERANCES UNLESS OTHERWISE SPECIFIED:		APPROVED:		NAME:	
mm	0 PLC ±0.5	1 PLC ±0.5	2 PLC ±0.13	3 PLC ±0.001	4 PLC ±0.001	FINISH	SCALE
MATERIAL		FINISH		WEIGHT		SCALE	
-		-		-		1:1	

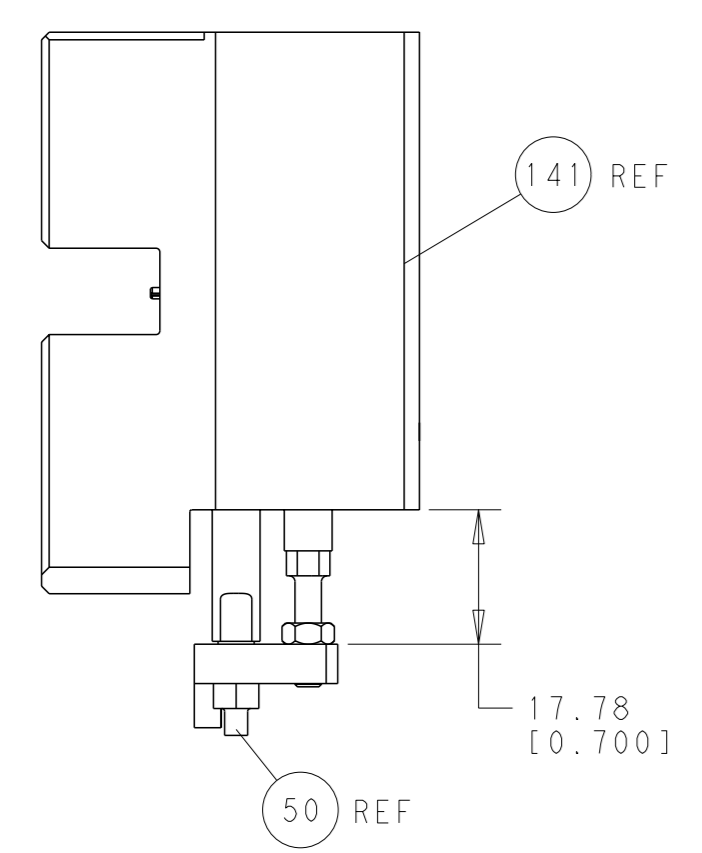
STE TE Connectivity
Harrisburg, PA 17105-3608

Ocean End Feed Applicator

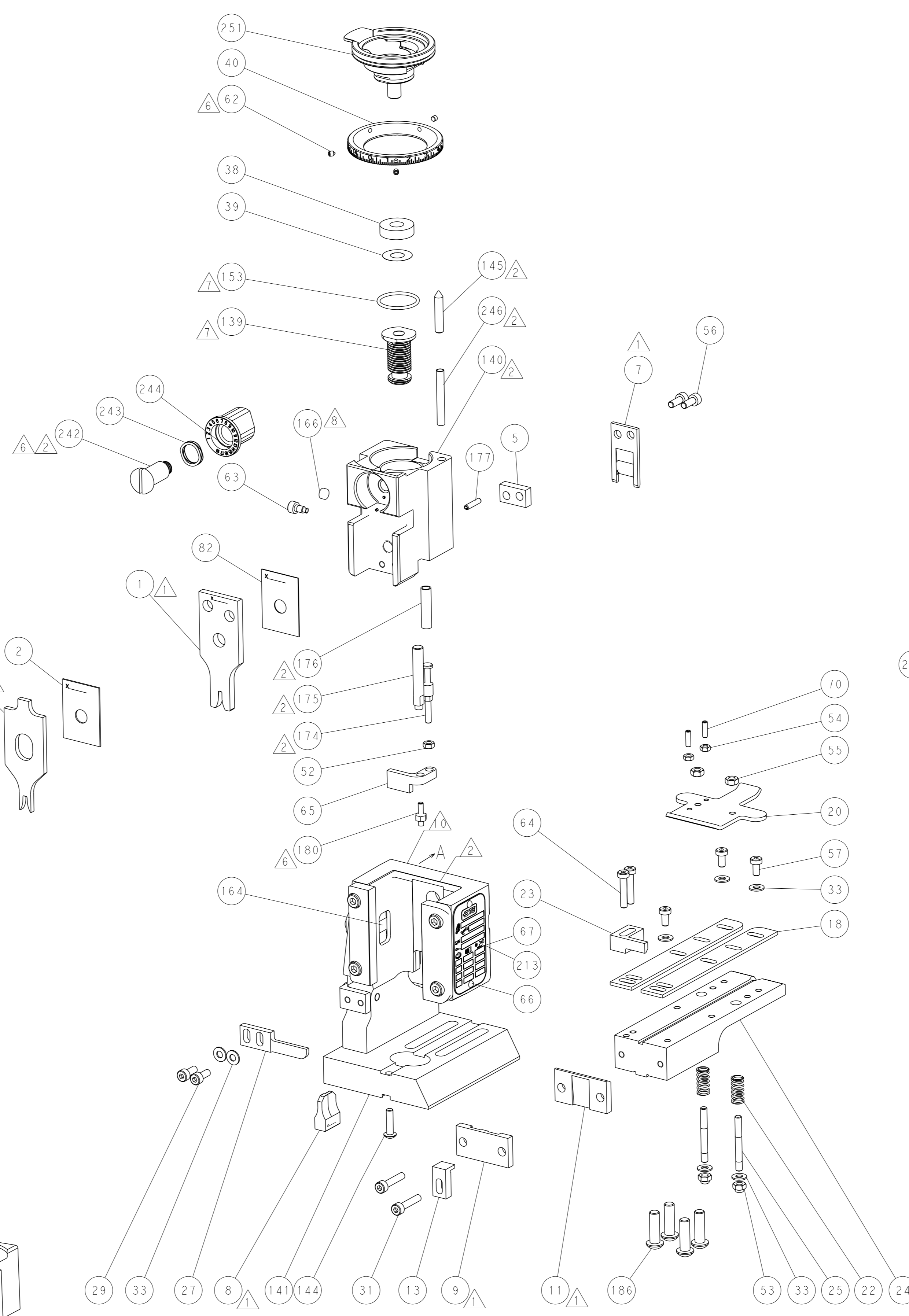
SIZE: A1 CAGE CODE: 00779 DRAWING NO: ©=2150316

Customer Accessible Production Drawing

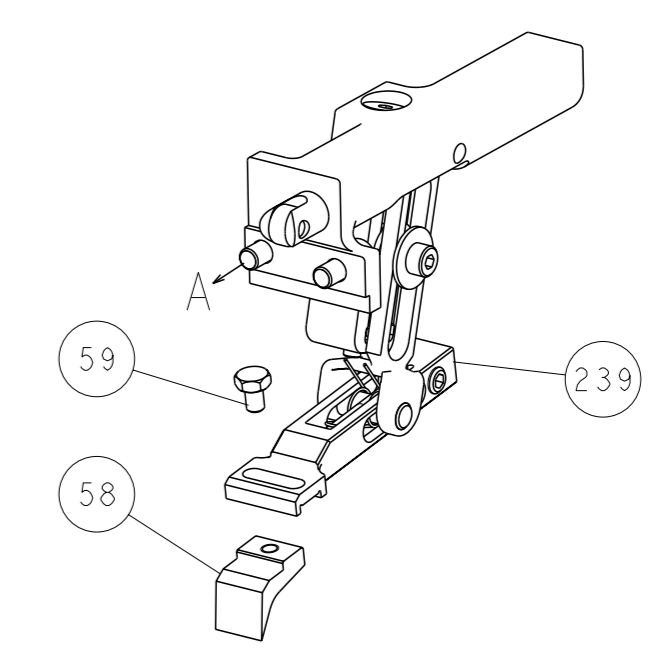
LOC		DIST		REVISIONS			
A	66	P	LYR	DESCRIPTION	DATE	OWN	APVD
		-		SEE SHEET 1			



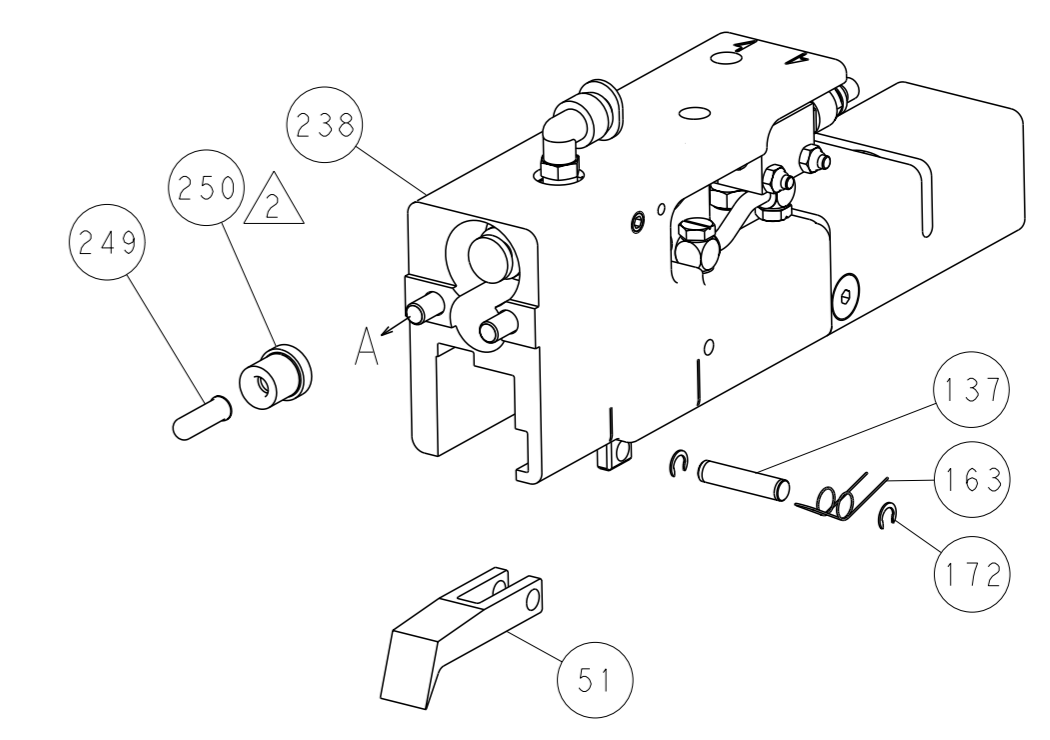
HOLDDOWN SET-UP



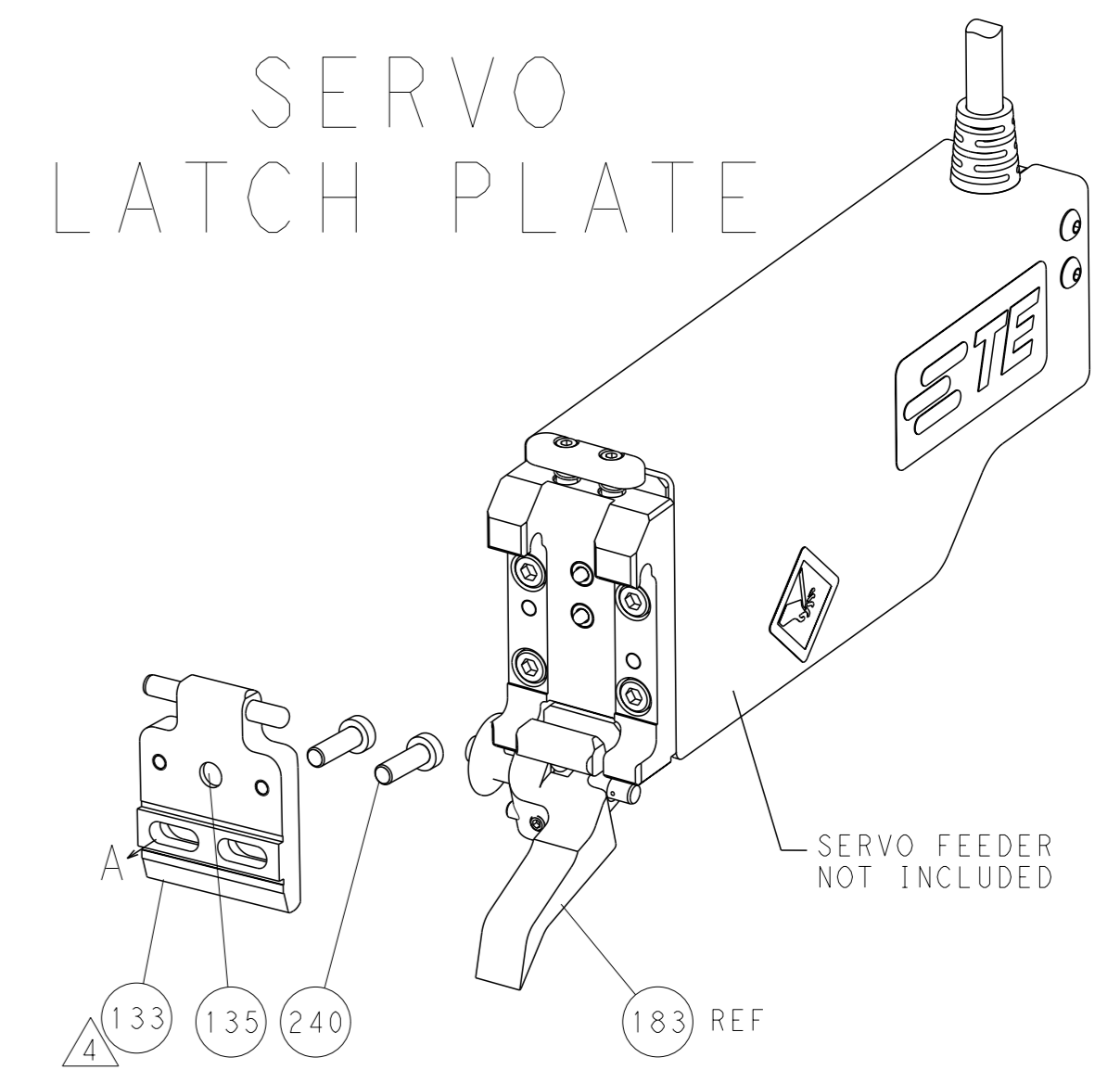
FEED TYPE
MECHANICAL



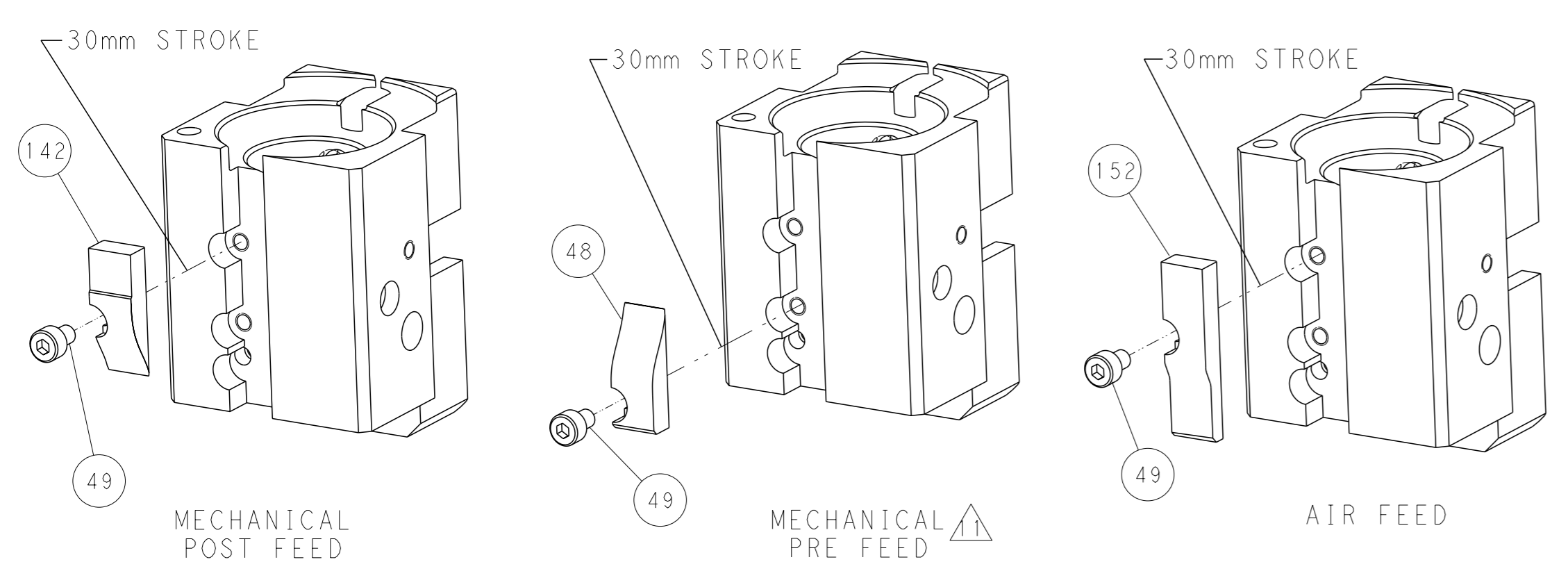
PNEUMATIC



SERVO
LATCH PLATE



CAM POSITIONS



PACIFIC VERSION
 Shown on sheets 3 of 4 & 4 of 4
 (Atlantic version shown on sheets 1 of 4 & 2 of 4)

DIMENSIONS: mm 		TOLERANCES UNLESS OTHERWISE SPECIFIED: 0 PLC ±0.5 1 PLC ±0.13 2 PLC ±0.13 3 PLC ±0.013 4 PLC ±0.001 ANGLES FINISH ±		OWN R. O. WILSON 06FEB2013 CHK K. J. STAKEM 07FEB2013 APVD J. L. ELBIN 07FEB2013 PRODUCT SPEC APPLICATION SPEC		NAME Ocean End Feed Applicator	
MATERIAL		WEIGHT		SIZE CAGE CODE DRAWING NO A1 00779 C=2150316		RESTRICTED TO Customer Accessible Production Drawing SCALE 1:1 SHEET 4 of 4 REV A	

DIMENSIONING AND TOLERANCING PER ASME Y14.5M-2003

A

A