



FCIconnect.com

Copyright FCI

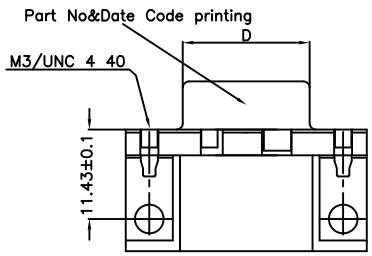
1

2,3

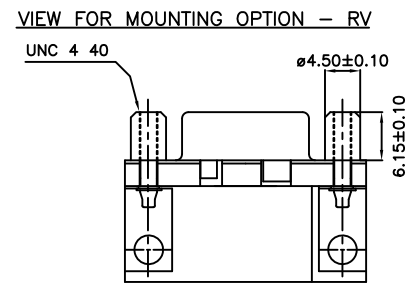
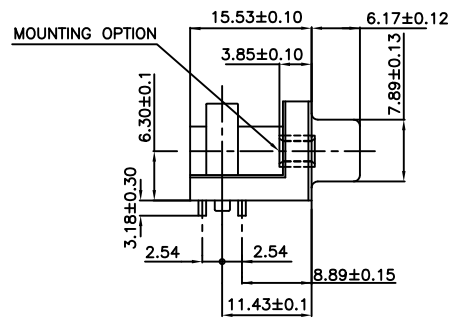
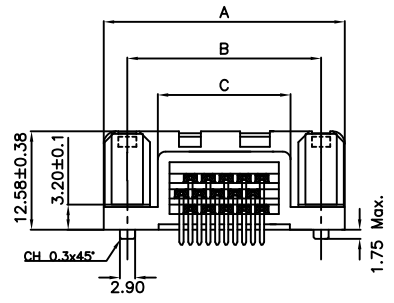
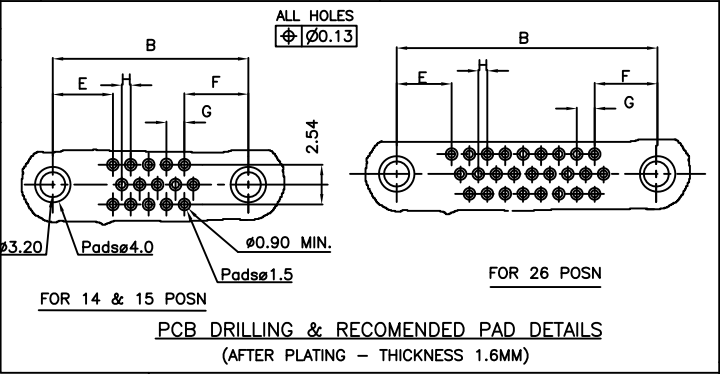
4

5

6



SIZE	DIMENSIONS							
	A±0.38	B±0.12	C±0.10	D ^{+0.25} ₋₀	E	F	G	H
14/15	30.81	24.99	16.96	16.21	7.68	8.19	2.285	1.14
26	39.14	33.32	25.18	24.54	7.02	8.01	2.285	1.14



ORDERING INFORMATION

C D 2 6 S 1 3 M 6 R V 0 9 L F

LEAD FREE
SPECIAL CODE
09->HIGH TEMP+TRAY PACKING
12->HIGH TEMP+TAPE & REEL PACKING
MOUNTING OPTIONS
RV->PIP METAL PEG+F.SCREW LOCK UNC 4.40+METAL BRACKET
RL->PIP METAL PEG+INSERTM3+METAL BRACKET
RX->PIP METAL PEG+INSERT UNC 4.40+METAL BRACKET
PLATING
4->Gold Flash
6->0.76 μ Au+SnPb/Sn

SERIES
NO.OF CONTACTS
14,15&26
TYPE OF CONTACTS
S-SOCKET
TYPE OF TERMINATION
13-ANGLED SPILL
PITCH 2.54 USA
FOOT PRINT 8.89 USA
HEIGHT OF TERMINATION
M-PCB 2.4MM & CTS. TERMINAL HEIGHT 3.18MM

PRODUCT SPECIFICATION

See :- GS-12-607

PACKAGING SPECIFICATION

See :- GS-14-1139 - Tape & Reel Packing
See :- GS-14-1157 - Tray Packing

- NOTES :
1) GENERAL VIEW IS FOR MOUNTING OPTION - RX/RL
2) FOR 14 POSN, HOLE NO:9 IS BLOCKED

"This product meets European Union Directives and other country regulations as described in GS-47-0004"
The housing will withstand exposure to 260°C peak temperature for 30 seconds in a convection,infra-red or vapor reflow oven solder application.
Packaging as per GS-14-920

TRUE POSITION : $\phi \ 0.36$

mat'l. code				surface ISO 1302 <input checked="" type="checkbox"/>	tolerance ISO 406 ISO 1101	projection 	product family COMPACT D
ltr	ecn no	dr	date	tolerances unless otherwise specified		MM	title C-D A/S FEMALE PIP CONNECTOR
A	109-0004	AS	2009-01-6	angles	linear		
B	109-0047	AS	2009-3-25		.00±0.1		
C	109-0202	NG	2009-9-25		.000±.00X	scale -	
D	ELX-I-21007	AB	2015/06/03	dr	ANISH.SALAM 2007-12-04		dwg no
				enrg	ALIAS.BABU 2015/06/03		sheet 1 of 1
				chr	MITHUN.PAUL 2015/06/03		size
				appd	BIJU.K.PAUL 2015/06/03		A3
sheet index	revision	D					type Product Customer Drawing
	sheet	1					