

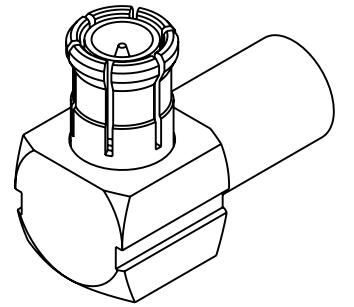
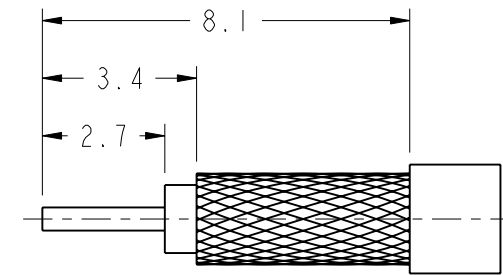
NOTES:

1. MATERIAL AND FINISHES:
 - HOUSING - BRASS, NICKEL PLATING
 - BODY - BeCu, GOLD PLATING
 - CONTACT PIN - BRASS, GOLD PLATING
 - INSULATOR - PTFE & DELRIN, NATURAL
 - COVER - BRASS, NICKEL PLATING
2. ELECTRICAL:
 - A. IMPEDANCE: 50 OHM
 - B. FREQUENCY RANGE: DC - 6 GHz
3. MECHANICAL:
 - A. DURABILITY: 500 CYCLES MIN.
 - B. TEMPERATURE RANGE: -40°C TO + 85°C
4. CRIMP FERRULE WITH .128" HEX

THIRD ANGLE PROJ.

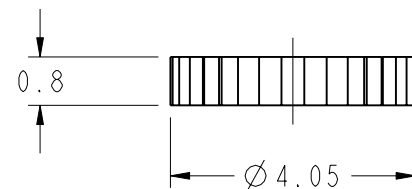
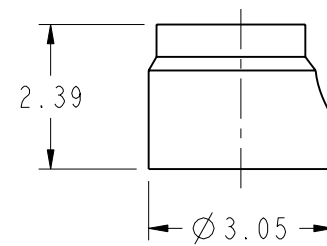
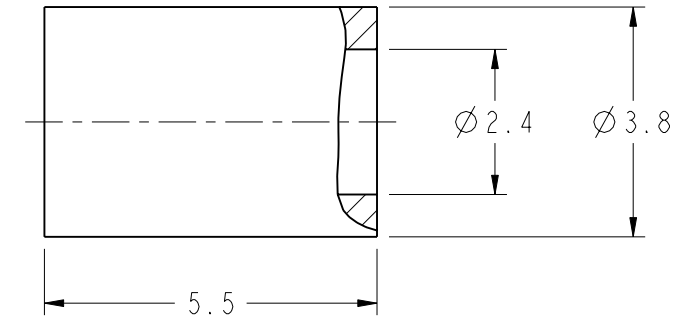
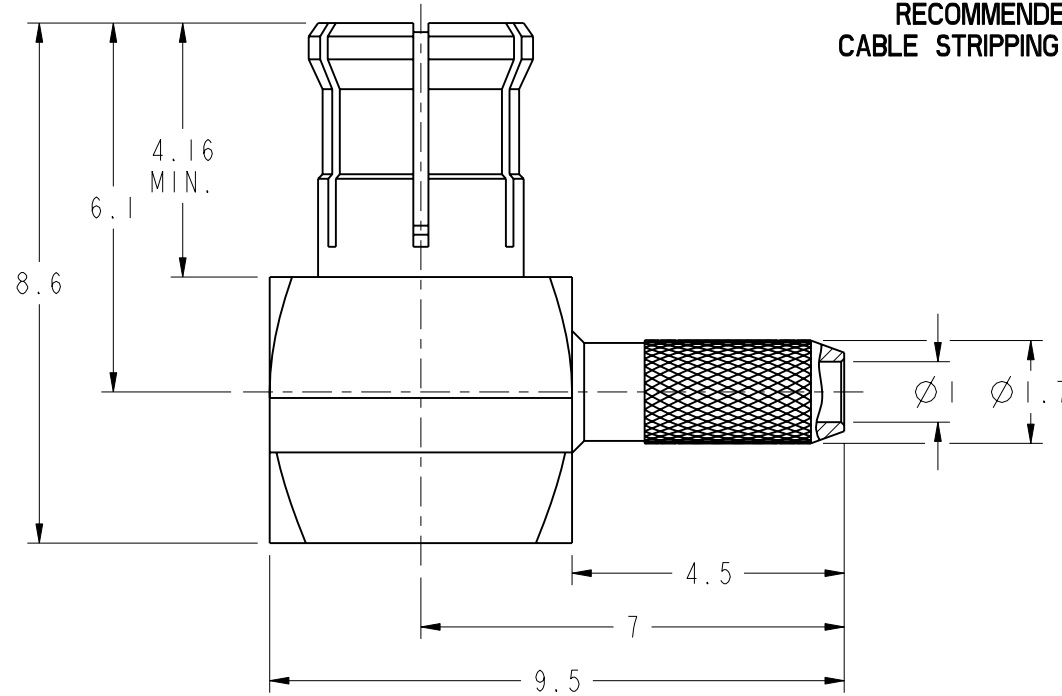
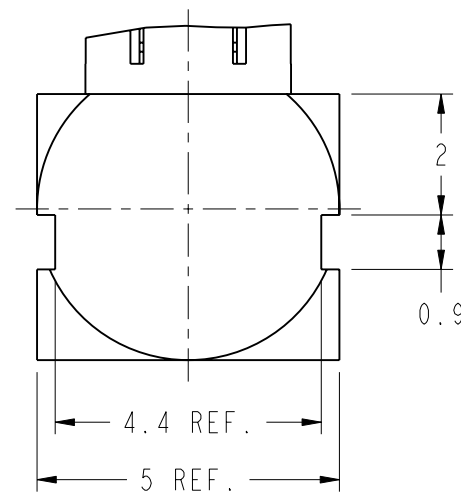
REVISIONS

| REV | DESCRIPTION | DATE | ECO | APPR |
|-----|-----------------|-----------|-------|------|
| A | RELEASE TO MFG. | 14-Jul-16 | 01326 | KEN |



SCALE 4.000

RECOMMENDED
CABLE STRIPPING DIM'S



CUSTOMER OUTLINE DRAWING

ALL OTHER SHEETS ARE FOR INTERNAL USE ONLY

UNLESS OTHERWISE SPECIFIED, DIMENSIONS ARE IN METRIC AND TOLERANCES ARE:
 < 0.5mm ± 0.05mm 0.5 - 6mm ± 0.1mm 6 - 30mm ± 0.2mm 30 - 120mm ± 0.3mm ANGLES ± 1°

NOTICE - These drawings, specifications, or other data (1) are, and remain the property of Amphenol corp. (2) must be returned upon request; and (3) are confidential and not to be disclosed to any person other than those to whom they are given by Amphenol Corp. the furnishing of these drawings, specifications, or other data by Amphenol Corp., or to any other person to anyone for any purpose is not to be regarded by implication or otherwise in any manner licensing, granting rights to permitting such holder or any other person to manufacture, use or sell any product, process or design, patented or otherwise, that may in any way be related to or disclosed by said drawings, specifications, or other data.

| | |
|------------------------------------|---|
| MATERIAL | - |
| REFERENCE AND CONFIGURATION LEVEL: | |
| FINISH | |

| | |
|-------------------|----------------|
| DRAWN STAR | DATE 14-Jul-16 |
| ENGINEER SUNDE | DATE 14-Jul-16 |
| APPROVED S. HSIEH | DATE 14-Jul-16 |
| CAD FILE | |

| | |
|---|--------------|
| TITLE MCX R/A CRIMP PLUG (FOR RG-178B/U, 196A/U CABLE) | |
| SCALE: 8.0:1.0 | SHEET 2 OF 2 |
| DWG SIZE B | REV A |

| | |
|-----------------------------------|--|
| Amphenol RF www.amphenolrf.com | |
| DRAWING NO. 919-389P-51A | |
| ITEM NO. 919-389P-51A | |
| PART NO. 919-389P-51A | |